

**Pintbrook Urinal**

- Vitreous china
- High Efficiency operates in the range of 0.125 gpf to 0.50 gpf (0.47 Lpf/1.9 Lpf)
- Powerful washdown action
- Optimized chinaware contours provide superior splash protection
- 3/4" inlet top spud
- Outlet connection threaded 2" NPT
- Wall hangers included
- Fixture only
- Made in Mexico (NAFTA compliant)

**6002.001** Top spud

**Nominal Dimensions:**

366 x 364 x 575mm  
(14-7/16" x 14-5/16" x 22-5/8")

Recommended working pressure – between 20 psi at valve when flushing and 80 psi static

**Compliance Certifications -**

**Meets or Exceeds the Following Specifications:**

- ASME A112.19.2-2008/CSA B45.1-08 for Vitreous China Fixtures



SEE REVERSE FOR ROUGHING-IN DIMENSIONS

**To Be Specified:**

- Color:  White
- Flush Valve:

0.5 gpf Flush Valve: Sensor-Operated:

- American Standard Selectronic® #6063.051.002 DC Power

0.5 gpf Flush Valve: Manual-Operated:

- American Standard #6045.051.002

0.125 gpf Flush Valve: Sensor-Operated:

- American Standard Selectronic® #6063.013.002 DC Power

0.125 gpf Flush Valve: Manual-Operated:

- American Standard #6045.013.002



**MEETS THE AMERICANS WITH DISABILITIES ACT GUIDELINES AND ANSI A117.1 ACCESSIBLE AND USEABLE BUILDINGS AND FACILITIES - CHECK LOCAL CODES.**

- When installed so top of rim is 432mm (17") from finished floor.



ENVIRONMENTAL  
PRODUCT  
DECLARATION



When used with  
**0.125 gpf**  
urinal flush valve

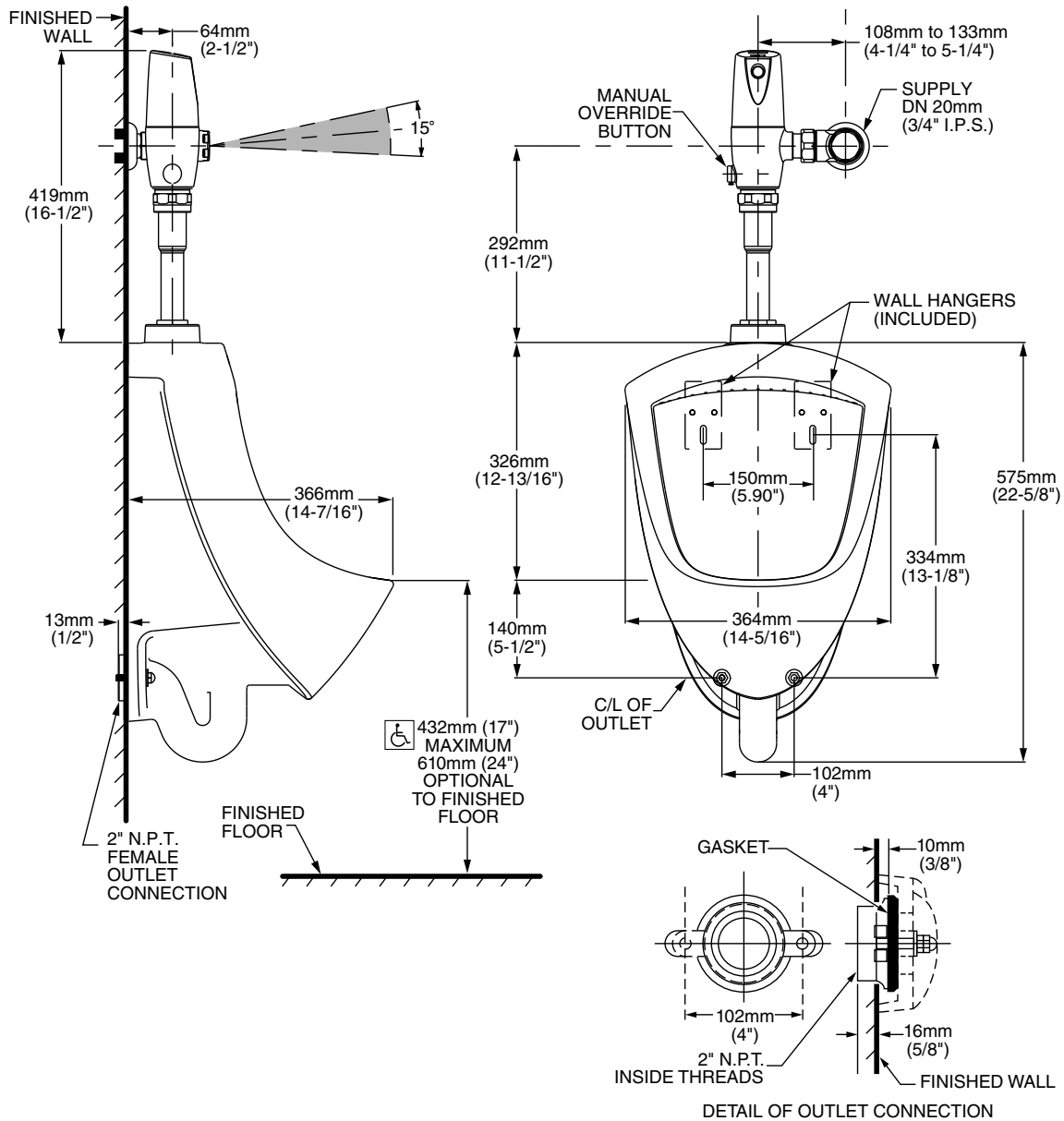


When used with  
**0.125 or 0.5 gpf**  
urinal flush valve



ADA  
COMPLIANT

American Standard®, the American Standard logo and all associated product names are exclusively owned by AS America, Inc., and are registered or unregistered trademarks in the U.S. and internationally. © 2024 AS America, Inc. All rights reserved.



**NOTES:**  
FLUSH VALVE NOT INCLUDED WITH FIXTURE AND MUST BE ORDERED SEPARATELY.  
PROVIDE SUITABLE REINFORCEMENT FOR ALL WALL SUPPORTS.

**ADA** MEETS THE AMERICANS WITH DISABILITIES ACT GUIDELINES AND ANSI A117.1 ACCESSIBLE AND USEABLE BUILDINGS AND FACILITIES - CHECK LOCAL CODES.  
When installed so top of rim is 432mm (17") maximum from finished floor.

**IMPORTANT:** Dimensions of fixtures are nominal and may vary within the range of tolerances established by ANSI Standard A112.19.2. These measurements are subject to change or cancellation. No responsibility is assumed for use of superseded or voided pages.

American Standard®, the American Standard logo and all associated product names are exclusively owned by AS America, Inc., and are registered or unregistered trademarks in the U.S. and internationally. © 2024 AS America, Inc. All rights reserved.