

*American Standard*

CERAMIX™

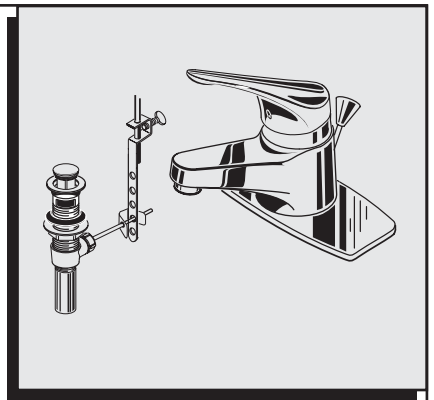
# LAVATORY FAUCET

*Thank you for selecting American-Standard...  
the benchmark of fine quality for over 100 years.*

*To ensure that your installation proceeds smoothly—  
please read these instructions carefully before you begin.*

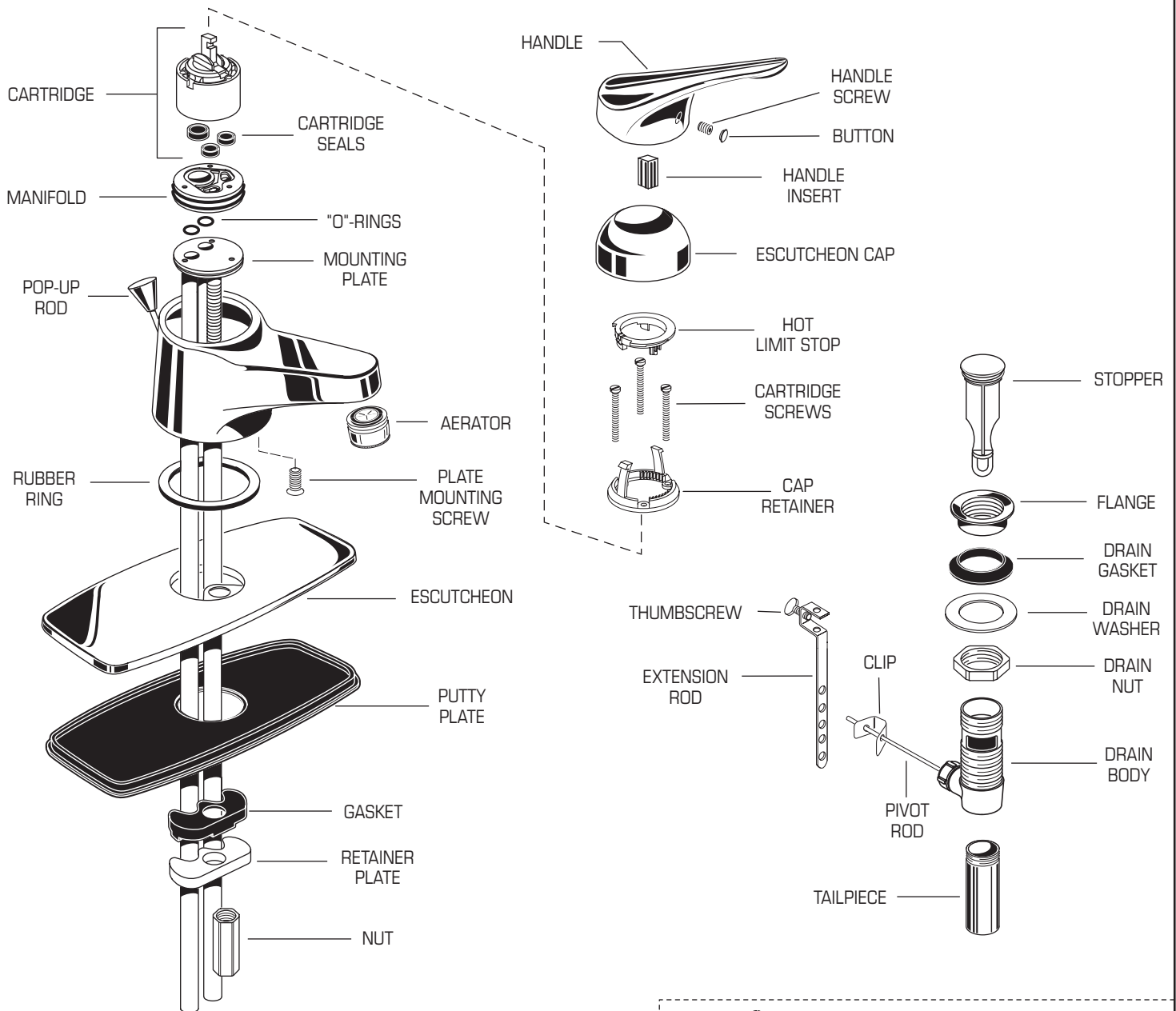
## Installation Instructions

**2000.100  
2000.101  
2000.101X**



Certified to comply with ANSI A112.18.1

23863E Rev. 1.1



### HOT LINE FOR HELP

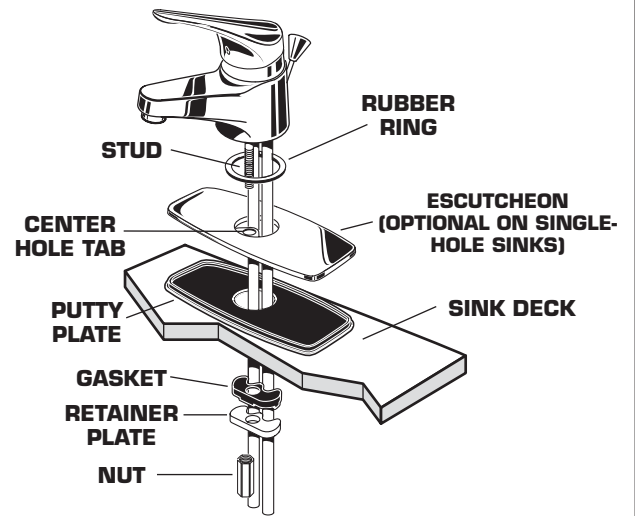
For toll-free information and answers to your questions, call:  
1-800-442-1902  
Weekdays 8:00 a.m. to 6:00 p.m. EST  
IN CANADA 1-800-387-0369 (TORONTO 1-905-306-1093)  
Weekdays 8:00 a.m. to 7:00 p.m. EST  
IN MEXICO 01-800-839-12-00

Product names listed herein are trademarks of American Standard Inc.  
© AS America, Inc. 2008

# 1

## FAUCET INSTALLATION

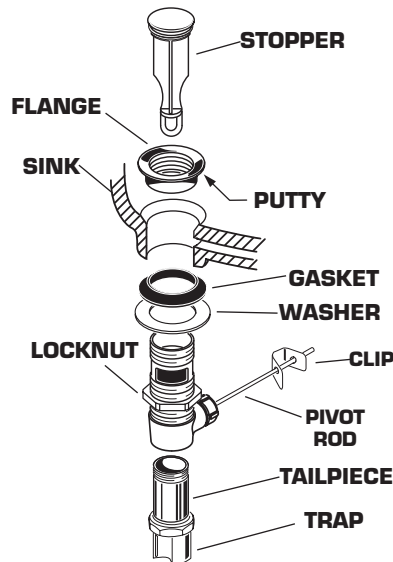
- For 3-hole (4" centers) installation, put PUTTY PLATE onto SINK so it fits into the two outside holes.
- Place ESCUTCHEON over PUTTY PLATE with the center hole tab towards the front.
- Feed faucet tubes through RUBBER RING and through DECK/ESCUTCHEON so STUD goes through CENTER HOLE.
- From below, push GASKET and RETAINER PLATE over stud and secure with NUT, pushing faucet to front of sink, so STUD rests against sink hole. Before final tightening, adjust faucet and escutcheon so that they are centered side to side.
- Carefully bend and/or cut supply tubes and connect left tube to HOT water and right tube to COLD water supply using appropriate connectors.



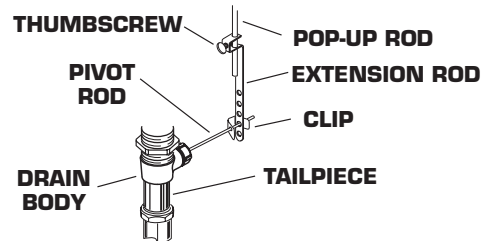
# 2

## INSTALL POP-UP DRAIN

- Push TAILPIECE down into TRAP (threaded end up).
- Thread LOCKNUT, WASHER and GASKET onto DRAIN BODY.
- Apply a bead of PUTTY to underside of FLANGE.
- Feed DRAIN BODY up through SINK and thread FLANGE fully onto BODY.
- Tighten LOCKNUT firmly, keeping the PIVOT ROD pointed towards the back of the SINK.
- Drop STOPPER into DRAIN BODY.
- Pull TAILPIECE up and thread tightly into DRAIN BODY.



- Position EXTENSION ROD onto POP-UP ROD and tighten THUMBSCREW.
- Remove one end of CLIP from PIVOT ROD by squeezing ends together while sliding.
- Insert PIVOT ROD into second or third hole in EXTENSION and reassemble CLIP. (EXTENSION may need to be bent.)
- Adjust STOPPER height by repositioning EXTENSION and tightening THUMBSCREW.



# 3

## TEST FAUCET

- Remove AERATOR.
- Turn on water supplies and check for leaks.

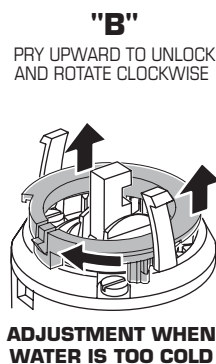
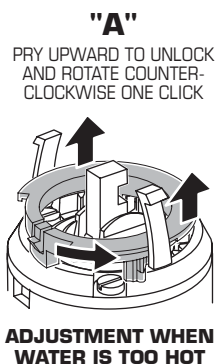
- Operate HANDLE up and down, and left and right and check for proper operation.
- Flush lines and reinstall AERATOR.

# 4

## ADJUST HOT LIMIT STOP

By restricting handle rotation and limiting the amount of hot water allowed to mix with the cold, the HOT LIMIT SAFETY STOP reduces risk of accidental scalding. To set the maximum hot water temperature of your faucet, all you need to do adjust the setting on the HOT LIMIT SAFETY STOP.

- Remove HANDLE, CAP and HOT LIMIT STOP. Follow "A" or "B" to adjust maximum discharge temperature.



# 5

## SERVICE

- If faucet drips, operate handle several times from "off" to "on". Do not apply excessive force.
- Clogged CARTRIDGE inlets may cause reduced flow in "full on" hot or cold. To clean inlets, first turn off water supply, then:
  - Remove HANDLE, CAP, HOT LIMIT STOP and CARTRIDGE. Clean inlets and MANIFOLD.
  - Reassemble CARTRIDGE, alternately tightening screws. Replace HOT LIMIT STOP, CAP and HANDLE. Check flow.

