

American Standard

INSTALLATION INSTRUCTIONS

FLUENT® DECK MOUNT BATH FILLER

7186.910

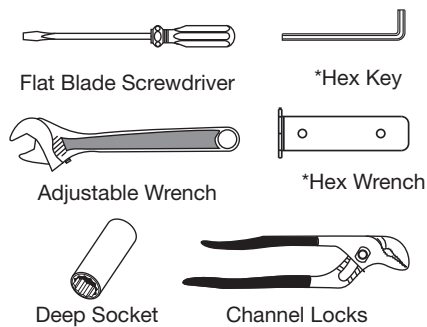
Thank you for selecting American Standard...
the benchmark of fine quality for over 100 years.

To ensure that your installation proceeds smoothly-please read
these instructions carefully before you begin.



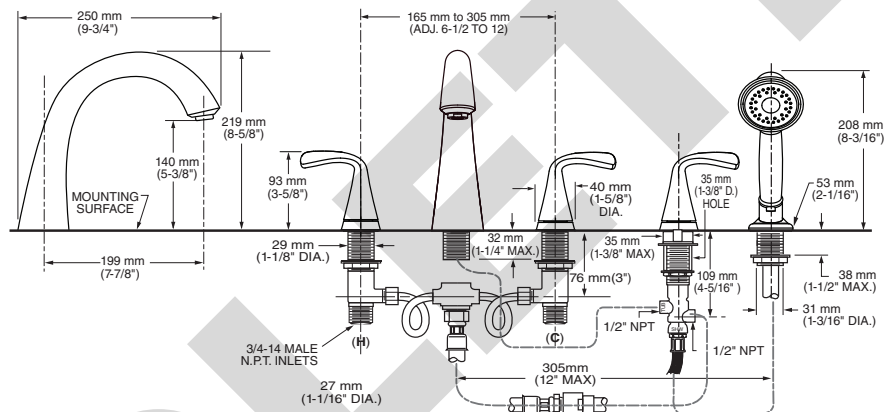
Certified to comply with ANSI A112.18.1M

RECOMMENDED TOOLS



*Supplied with Fittings

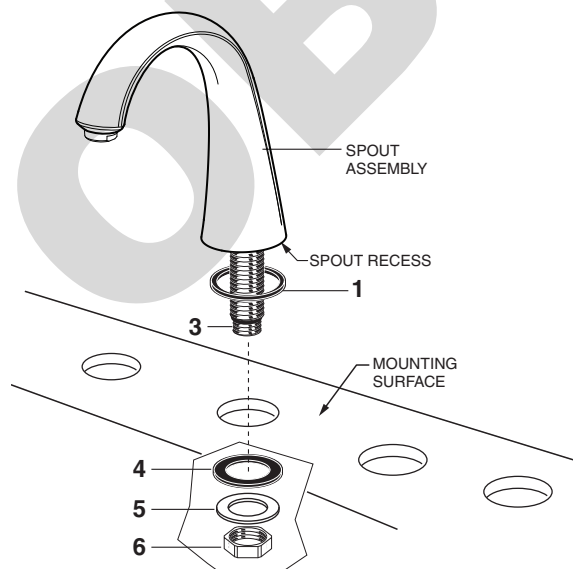
ROUGHING-IN DIMENSIONS



1 SPOUT ASSEMBLY

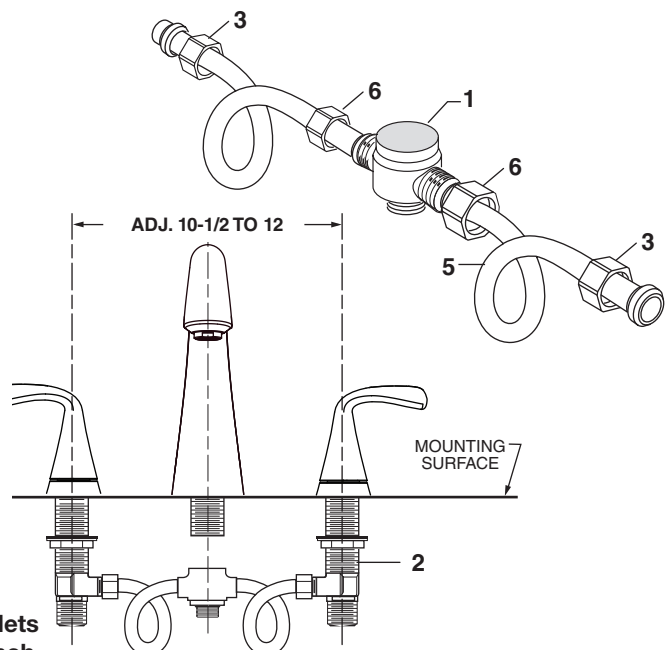
CAUTION Turn off hot and cold water supplies before beginning.

- Install RING WASHER (1) into spout base recess. Insert SPOUT SHANK (3) through center hole on mounting surface.
- Assemble RUBBER WASHER (4) and BRASS WASHER (5) and LOCKNUT (6) onto SPOUT SHANK (3). Align SPOUT ASSEMBLY and from underside of ledge secure SPOUT ASSEMBLY into position with LOCKNUT (6).



2 PREPARE TUBE AND TEE ASSEMBLY

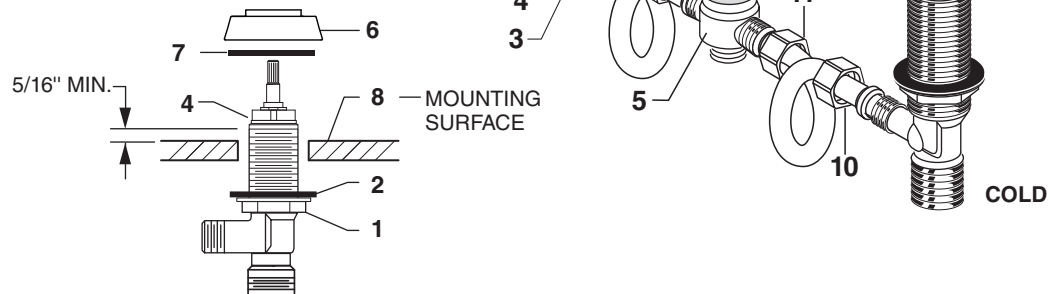
- Prepare HOSE and TEE ASSEMBLY (1) to fit each VALVE (2). If necessary, adjust HOSE CONNECTOR (3). Tighten HOSE CONNECTOR (3) with WRENCH to the VALVE (2). Tighten HOSE CONNECTOR G1/2 (6) to TEE ASSEMBLY (1).
- Remove HOSE CONNECTOR (3) from each VALVE (2) and slide onto HOSE (5).



NOTE:
VALVE inlets
are 3/4-inch
NPT male.

3 VALVE ASSEMBLY

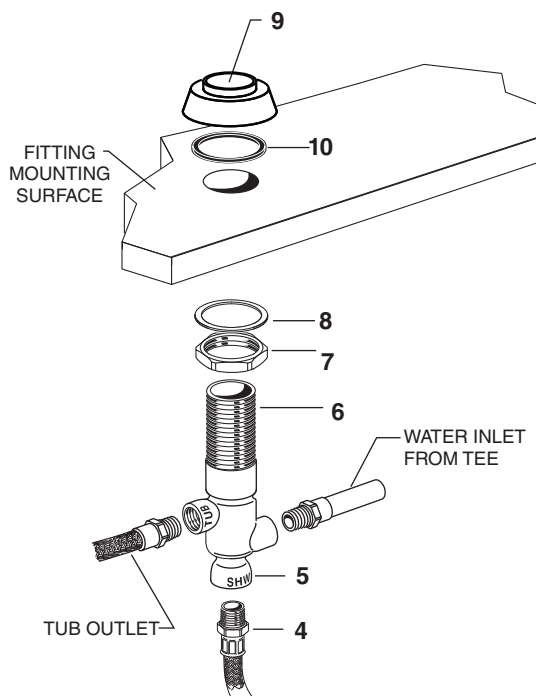
- Install LOCKNUTS (1) and RUBBER WASHERS (2) onto valve shanks.
- Slide HOSE CONNECTOR (10) onto VALVE BODY (4). Slide HOSE CONNECTOR G1/2 (11) onto TEE (5). Slide HOSE (3) assembly into opening of both VALVE BODIES (4) and TEE (5). Tighten HOSE CONNECTOR (10) and (11) firmly.
- Threads of VALVE BODY (4) should extend at least 5/16 inch above MOUNTING SURFACE (8). If necessary, adjust LOCKNUT (1).
- Place RUBBER RING (7) into ESCUTCHEON (6) and thread onto valves until snug against internal stop.
- Tighten LOCKNUT (1) to secure VALVE (4) position with channel locks.
- Connect HOT water supply to inlet of left VALVE and COLD water supply to inlet of right VALVE using appropriate connector.



4 DIVERTER INSTALLATION

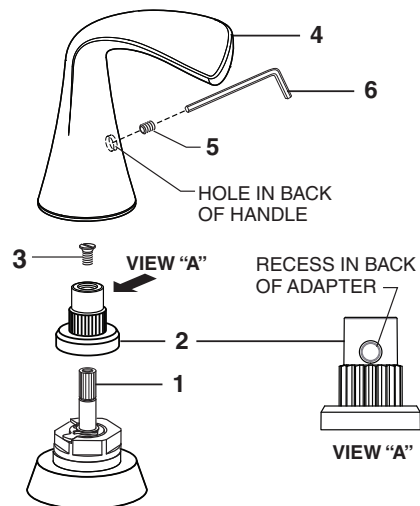
NOTE: Use thread sealant on all threaded connections.

- Assemble MOUNTING NUT (7) and WASHER (8) onto DIVERTER BODY (6).
- Insert the DIVERTER BODY (6) through the mounting deck from below. Place RUBBER RING (10) into ESCUTCHEON (9) and thread onto DIVERTER BODY THREADS (6) until snug against internal stop.
- Position the DIVERTER BODY (6) as required and tighten the MOUNTING NUT (7) securely.
- Connect the water inlet and tub outlet lines to the DIVERTER BODY (6).
- Thread HOSE (4) into the SHOWER CONNECTION (5) of the DIVERTER BODY (6) and tighten securely. **Check with local plumbing codes for backflow prevention requirements. Install a backflow prevention device if required.**



5 INSTALL HANDLES

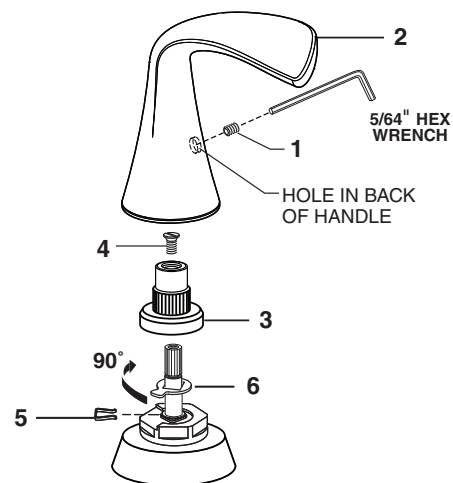
- Turn hot and cold VALVE STEMS (1) to the off position.
- Push ADAPTER (2) onto VALVE STEM (1), so the recess in ADAPTER (2) is facing toward the back wall. **VIEW "A"**. Install and tighten STEM SCREW (3) to secure ADAPTER (2).
- Align the hole in back of the HANDLE (4) with the recess in ADAPTER (2). Install the HANDLE (4) onto ADAPTER (2).
- Tighten SET SCREW (5) with 5/64" HEX WRENCH (6) supplied.



6 SERVICE

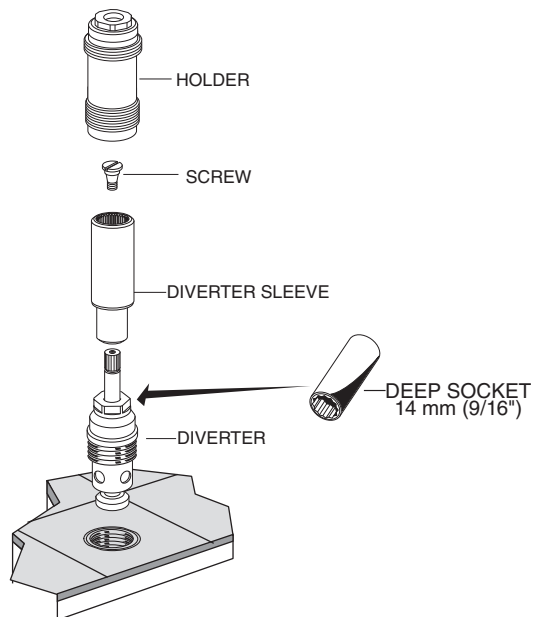
To change direction of handle rotation, proceed as follows:

- Turn valve to OFF position.
- Loosen handle set screw to remove HANDLE (2) from HANDLE ADAPTER (3).
- Loosen the adapter screw (4). Use a flat blade screw driver to remove SPRING CLIP (5).
- Lift STOP WASHER (6), turn 90° and replace.
- Replace SPRING CLIP (5).
- Reinstall HANDLE ASSEMBLY (2) and tighten set screw.
- If spout drips, operate handles several times from OFF to ON position. Do not force - handles turn only 90°.



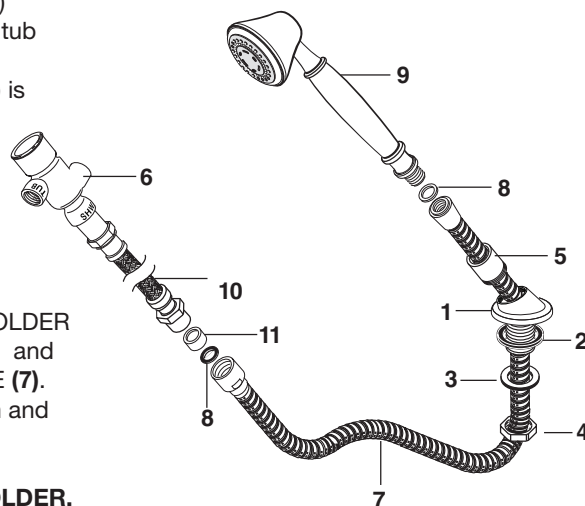
6a SERVICE — TO REMOVE DIVERTER

- Turn off the water supplies.
- Turn HANDLE to the off position.
- Remove the HOLDER by threading it counter clockwise.
- Remove the SLEEVE from DIVERTER by loosening screw.
- Using 14 mm (9/16") Deep Socket, remove diverter.



7 HAND SHOWER INSTALLATION

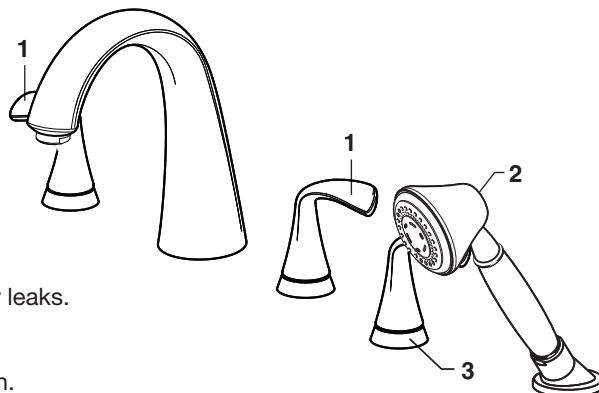
- Install RUBBER RING (2) on SPRAY ESCUTCHEON (1) and install SPRAY ESCUTCHEON (1) through fifth hole on tub ledge (12" max from Spout) making sure the SPRAY ESCUTCHEON (1) opening is directed toward tub center. Install RUBBER WASHER (3) and LOCKNUT (4) on to SPRAY ESCUTCHEON (1) from underside of ledge. Be sure RUBBER RING (2) is properly seated in ESCUTCHEON (1). Install RUBBER WASHER (3) and LOCKNUT (4) from underside of ledge.
- Secure SPRAY ESCUTCHEON (1) by tightening LOCKNUT (4).
- Slip SHOWER HOSE (7) with HOSE CONNECTOR through SPRAY HOLDER (5) and ESCUTCHEON (1) from above deck. **Note:** SPRAY HOLDER (5) must be separate from ESCUTCHEON (1) to get SPRAY HOSE (7) through ESCUTCHEON (1). Make sure threads on SPRAY HOLDER (5) are facing the SPRAY ESCUTCHEON (1). Install CHECK VALVE (11) and SEAL (8) on SPRAY HOSE (7) and connect HOSE (10) to SPRAY HOSE (7). Install SEAL (8) on SPRAY HOSE (7) at HAND SHOWER (9) connection and connect HAND SHOWER (9) to SPRAY HOSE (7).



NOTE: When not in use, HAND SHOWER should be seated in the HOLDER.

8 TEST INSTALLED FAUCET

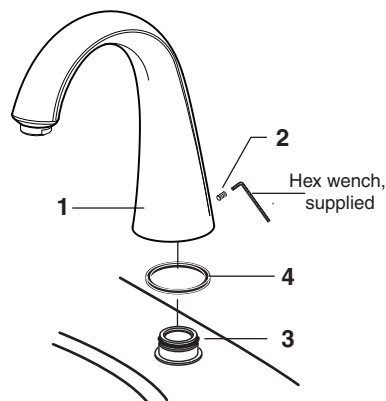
- Turn VALVES (1) to "off" position.
- With handles in "off" position, turn on water supplies and check all connections for leaks.
- Remove aerator and operate both handles and flush the water lines thoroughly.
- Lift HAND SHOWER (2) from holder, direct spray into tub, rotate DIVERTER HANDLE (3) to check HAND SHOWER (2) and HOSES for leaks.
- Turn VALVES "off".
- If spout drips, operate handles several times from OFF to ON position. Do not force - handles turn only 90°.



CAUTION: The flow rate of this Tub Filler exceeds 20 gallons/minute at higher water pressure. Do not fill bathtub unattended.

9 Before the bathroom is completely finished, you may want to remove spout, HAND SHOWER, and handles to avoid damage during construction.

- To remove handles, reverse steps in STEP 4.
- To remove SPOUT (1), proceed as follows:
 - Remove SET SCREW (2) using 5 mm hex wrench supplied.
 - Lift SPOUT (1) off SHANK (3) carefully and remove RUBBER RING (4).
 - Reverse sequence to re-install SPOUT (1). Be sure RUBBER RING (4) is properly seated in its recess at the base of the SPOUT (1). Make certain SET SCREW (2) is properly aligned and tight so that SPOUT (1) is locked in place.



10 CARE INSTRUCTIONS:

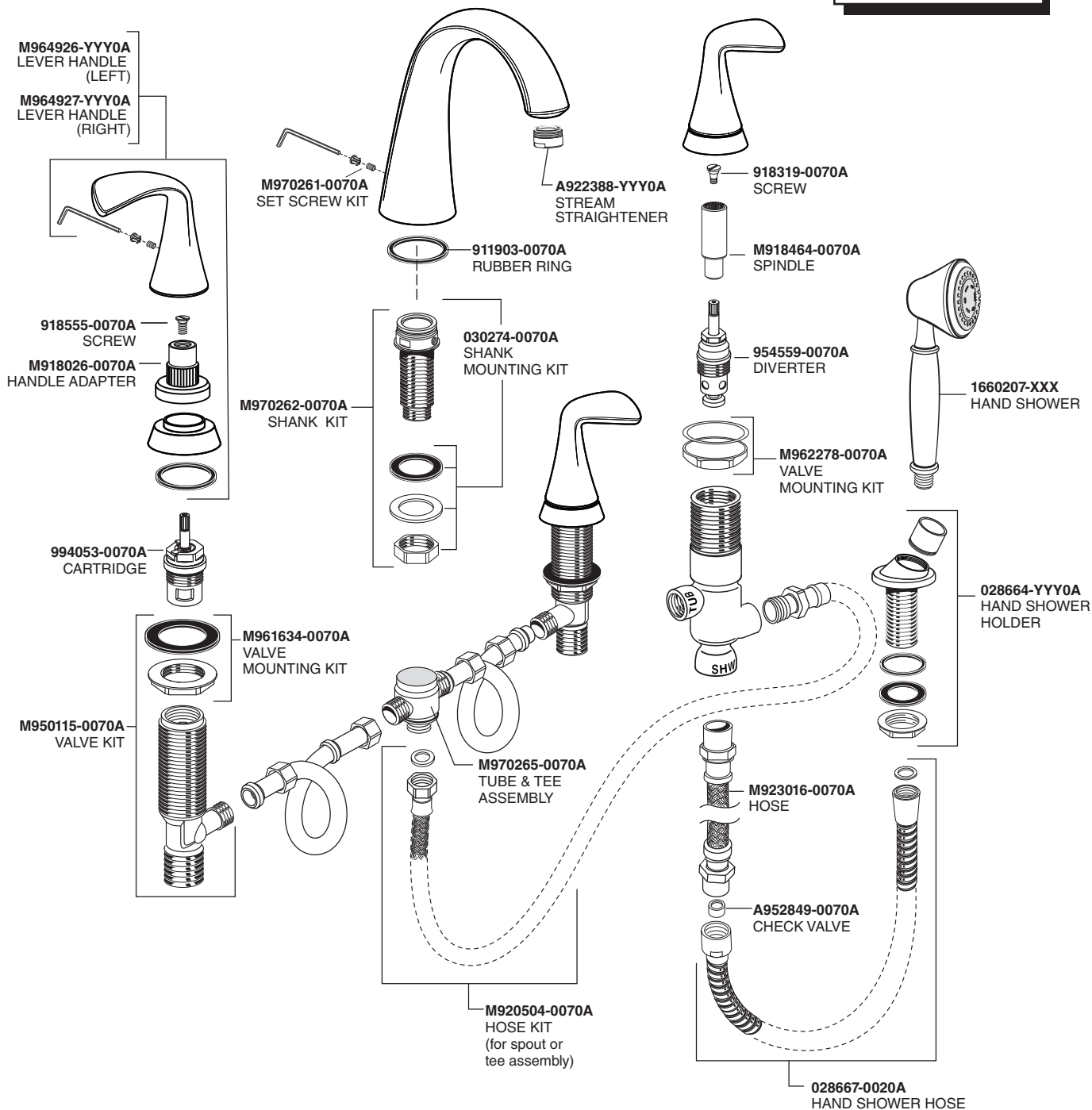
DO: SIMPLY RINSE THE PRODUCT CLEAN WITH CLEAR WATER. DRY WITH A SOFT COTTON FLANNEL CLOTH.
DO NOT: DO NOT CLEAN THE PRODUCT WITH SOAPS, ACID, POLISH, ABRASIVES, HARSH CLEANERS, OR A CLOTH WITH A COARSE SURFACE.

American Standard

FLUENT® DECK MOUNT BATH FILLER

MODEL NUMBER

7186.910



HOT LINE FOR HELP

For toll-free information and answers to your questions, call:

1 (800) 442-1902

Mon. - Fri. 8:00 a.m. to 8:00 p.m. EST

Saturday 10:00 a.m. to 4:00 p.m. EST

IN CANADA 1-800-387-0369

(TORONTO 1-905-306-1093)

Weekdays 8:00 a.m. to 7:00 p.m. EST

IN MEXICO 01-800-839-1200



PART OF LIXIL

Replace the "YYY" with
appropriate finish code

| | |
|-----------------|-----|
| POLISHED CHROME | 002 |
| SATIN NICKEL | 295 |