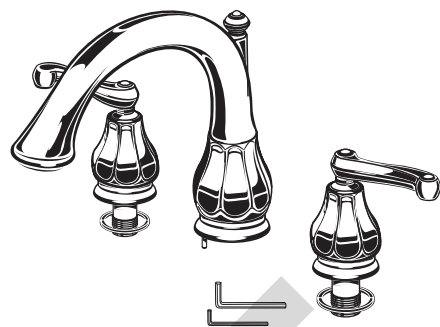


American Standard

DECK MOUNT TUB SYSTEMS DAZZLE TRIM KIT

Installation Instructions T028.900



Certified to comply with ANSI A112.18.1
U.S. Patent No. D403,750

Thank you for selecting American-Standard...the benchmark of fine quality for over 100 years.

To ensure that your installation proceeds smoothly—please read these instructions carefully before you begin.

M968495 Rev. 1.3

Recommended Tools



Drill with 3/16" bit



Phillips Screwdriver



Flat Blade Screwdriver



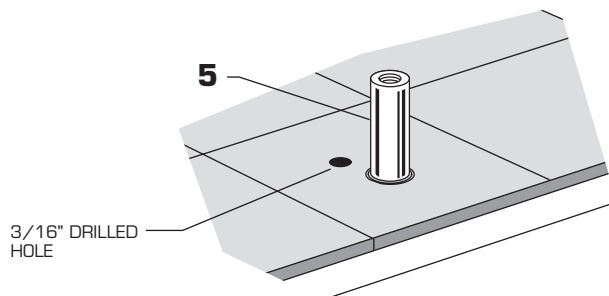
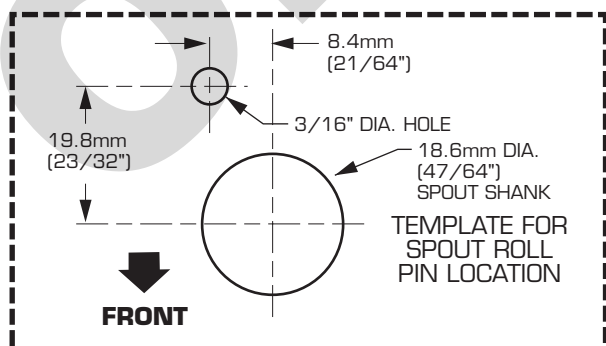
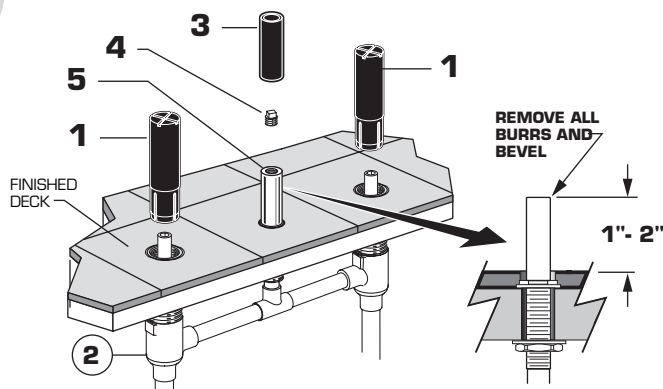
Adjustable Wrench



Channel Locks

1 SPOUT INSTALLATION

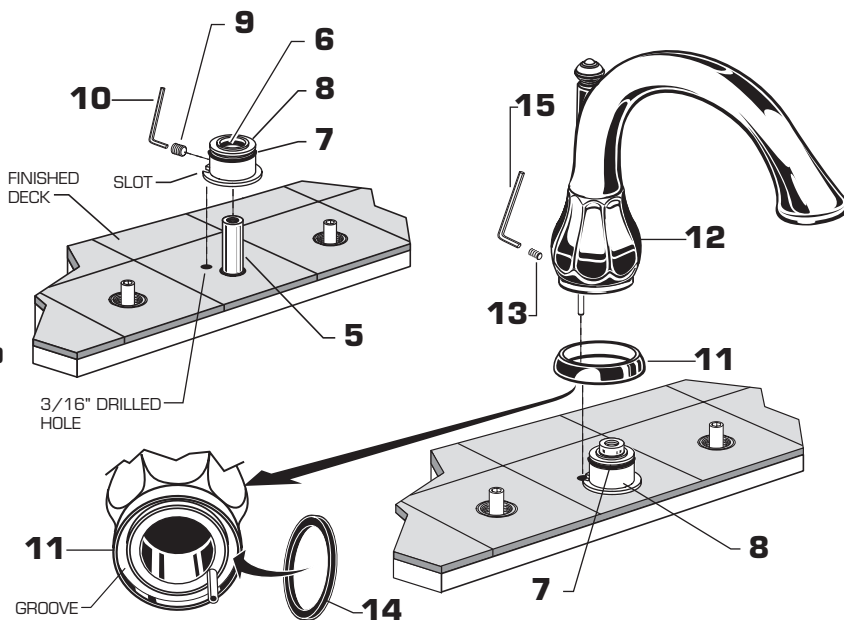
- Complete FINISHED DECK before trim installation.
- Turn off the water supplies.
- Remove the GUARDS (1) from the VALVE BODIES (2). Remove the GUARD (3) and 1/4" PLUG (4) from the SPOUT SHANK (5).
- The SPOUT SHANK (5) height should be 1" to 2" above the FINISHED DECK. Cut the SPOUT SHANK (5) if necessary. **Remove all burrs and bevel the end of the shank. Failure to do so may damage the SPOUT O-ring during installation and cause water leakage.**
- Drill a 3/16" hole in the finished deck for spout locking pin. See TEMPLATE for location.



1A

SPOUT INSTALLATION

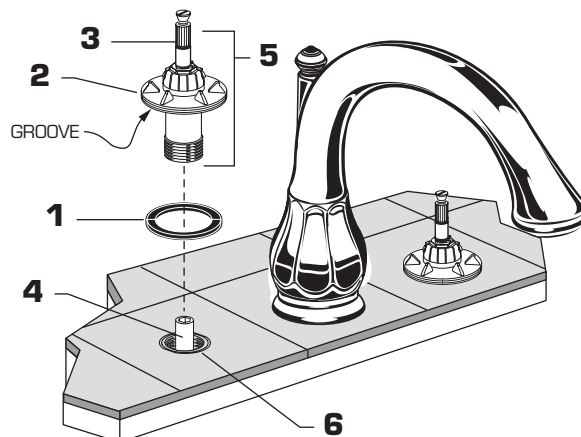
- Lubricate the SPOUT ADAPTER O-RING (6) and SPOUT O-RING (7).
- Push SPOUT ADAPTER (8) on SPOUT SHANK (5) and align slot in SPOUT ADAPTER (8) with 3/16" drilled hole.
- Tighten SPOUT ADAPTER SET SCREW (9) securely with 4mm HEX KEY (10) supplied.
- Position the RUBBER RING (14) in the groove in the base of the ESCUTCHEON (11). Push the SPOUT (12) with ESCUTCHEON (11) down onto the SPOUT ADAPTER (8) and tighten the SET SCREW (13) securely with the 5mm HEX KEY (15) supplied.



2

INSTALL HANDLE ADAPTERS

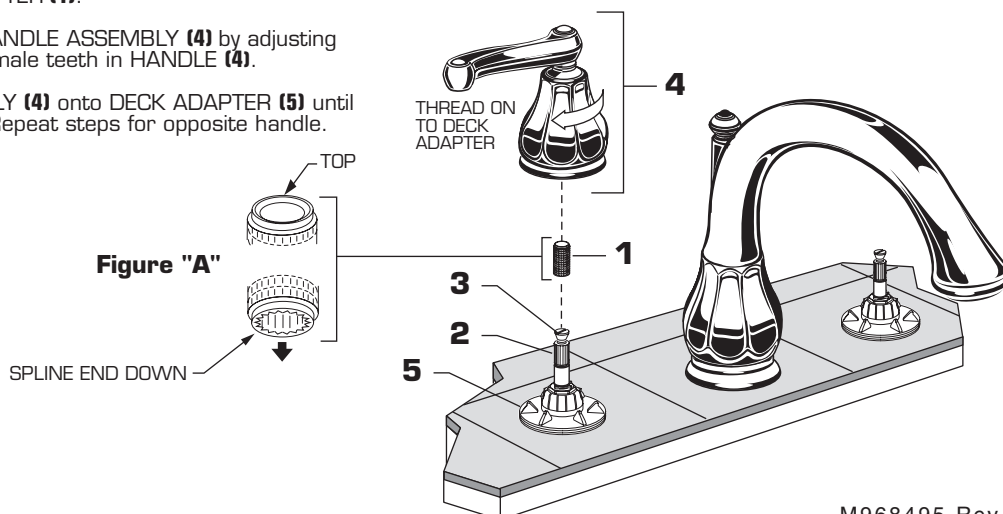
- Place the ESCUTCHEON SEALS (1) into groove of DECK ADAPTERS (2).
- Align the HANDLE STEM (3) with the SLEEVE (4) as necessary.
- Thread the HANDLE ADAPTER (5) into the VALVE BODY (6) until the DECK ADAPTERS (2) contacts tight against the finished deck.



3

INSTALL HANDLES

- Push ADAPTER (1) on VALVE STEM (2), so that the hole of the ADAPTER (1) without a spline is facing up. See figure "A". Tighten STEM SCREW (3) to secure ADAPTER (1).
- Find correct position of LEVER HANDLE ASSEMBLY (4) by adjusting male teeth on ADAPTER (1) to female teeth in HANDLE (4).
- Thread LEVER HANDLE ASSEMBLY (4) onto DECK ADAPTER (5) until snug against mounting surface. Repeat steps for opposite handle.



4 TESTING

- Turn the HOT HANDLE clockwise and the COLD HANDLE counterclockwise to the off position.
- Unscrew and remove the STREAM STRAIGHTENER.
- Slowly turn on the water supplies.
- Operate the HANDLES to flush water lines thoroughly. Check SPOUT connection for leakage.
- Turn the Handles off. Replace the SPOUT END.

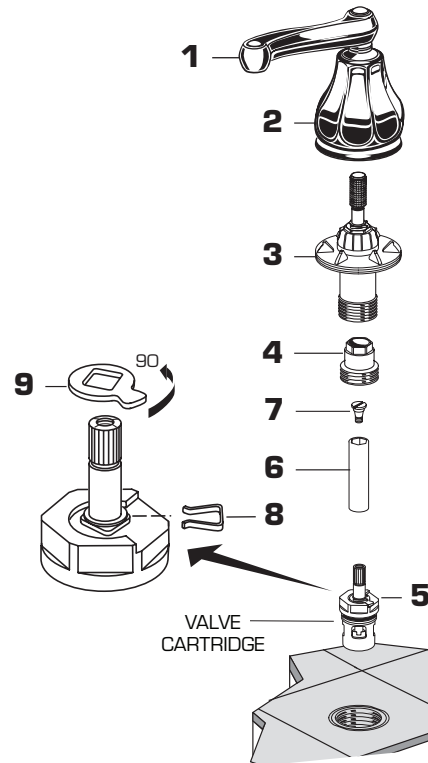


5 SERVICE

To change the direction of handle rotation

Turn off the water supplies

- Turn HANDLE (1) to the off position.
- Unthread the HANDLE BASE (2) from HANDLE ADAPTER (3).
- Unthread HANDLE ADAPTER (3) and remove.
- Remove VALVE LOCKNUT (4). A 17mm deep socket is required.
- Remove the CARTRIDGE (5) by pulling up on the SLEEVE (6).
- Remove SCREW (7) and pull off SLEEVE (6).
- Remove the SPRING CLIP (8).
- Remove the STOP WASHER (9). Turn it 90° and replace.
- Replace the SPRING CLIP (8).
- Reverse the above steps to reassembly the components.
- If the spout drips, operate the handles several times from the off to the on position. Do not force - the handles only turn 90°.



6 CARE INSTRUCTIONS:

DO: SIMPLY RINSE THE PRODUCT CLEAN WITH CLEAR WATER. DRY WITH A SOFT COTTON FLANNEL CLOTH.

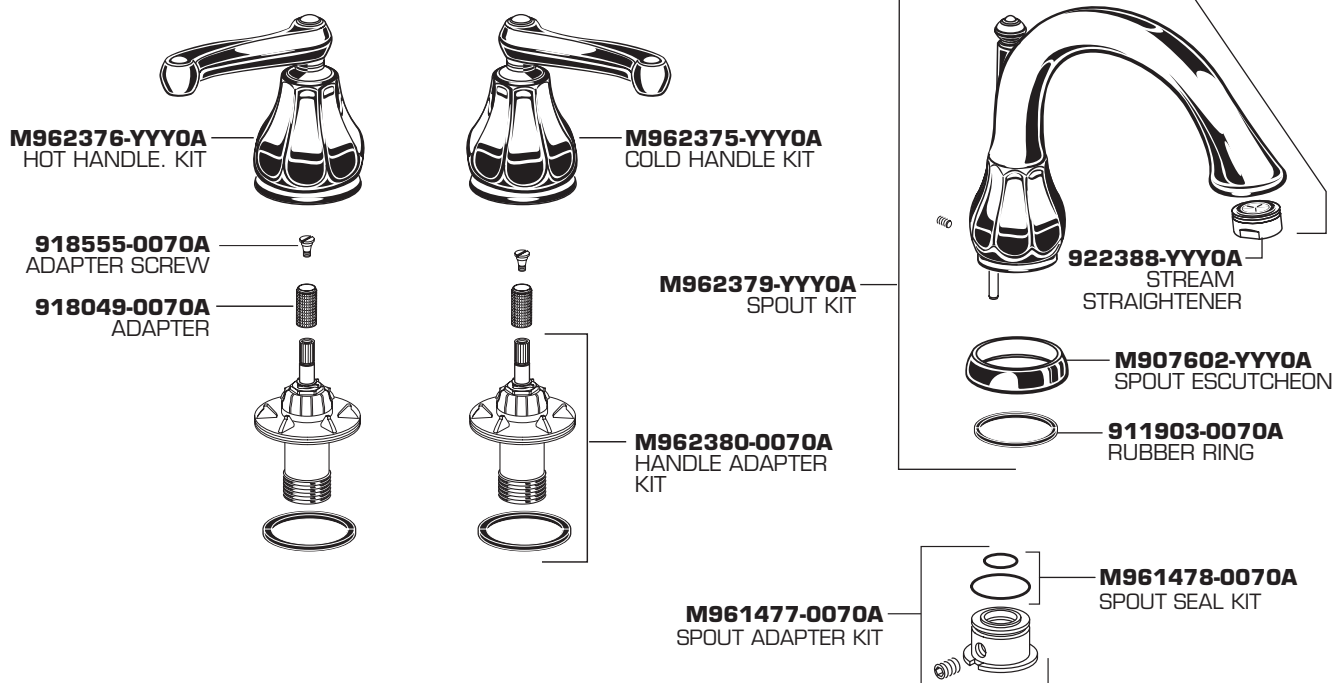
DO NOT: DO NOT CLEAN THE PRODUCT WITH SOAPS, ACID, POLISH, ABRASIVES, HARSH CLEANERS, OR A CLOTH WITH A COARSE SURFACE.

American Standard

DAZZLE DECK MOUNT TUB FILLER TRIM KIT

MODEL NUMBER

T028.900



Replace the "YYY" with appropriate finish code

CHROME	002
SATIN NICKEL	295
OIL RUBBED BRONZE	224



HOT LINE FOR HELP

For toll-free information and answers to your questions, call:
1-800-442-1902
Weekdays 8:00 a.m. to 6:00 p.m. EST
IN CANADA 1-800-387-0369 (TORONTO 1-905-306-1093)
Weekdays 8:00 a.m. to 7:00 p.m. EST
IN MEXICO 01-800-839-1200

Product names listed herein are trademarks of American Standard Inc.
© AS America, Inc. 2008