

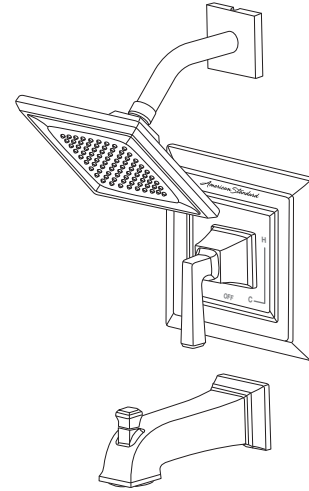
*American Standard*

# INSTALLATION INSTRUCTIONS T455.50X

## TOWN SQUARE® S PRESSURE BALANCE BATH AND SHOWER TRIM KIT

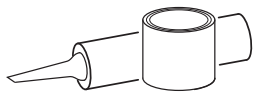
Thank you for selecting American Standard...  
the benchmark of fine quality for over 140 years.

To ensure that your installation proceeds smoothly-please  
read these instructions carefully before you begin.



Certified to comply with ANSI A112.18.1M

### RECOMMENDED TOOLS



Plumbers' Putty  
or Caulking



Teflon Tape



Phillips Screwdriver



Flat Blade Screwdriver



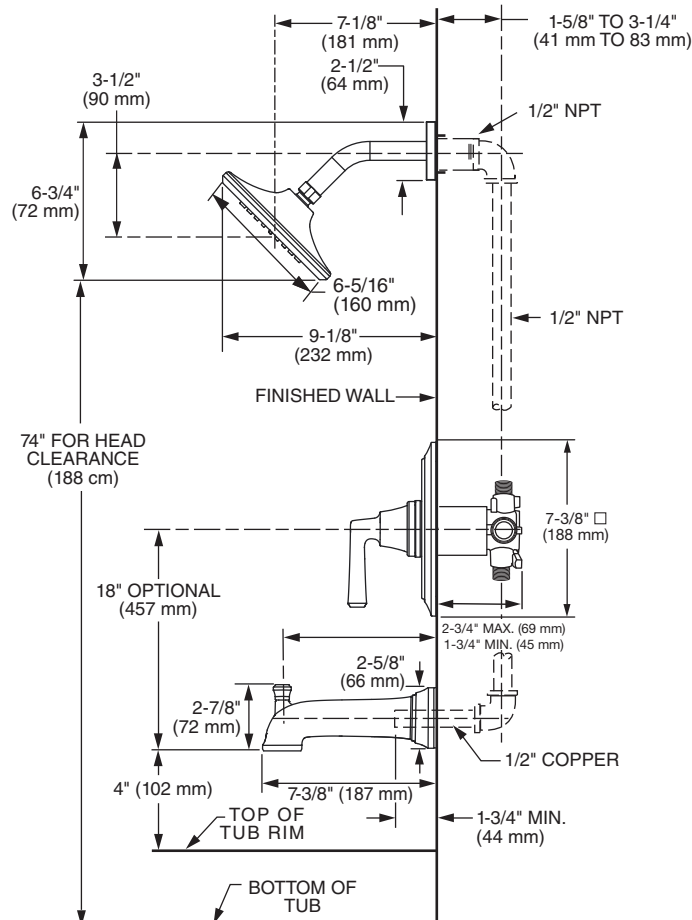
Adjustable Wrench



Channel Locks

### ROUGHING-IN DIMENSIONS

- To assure proper positioning in relation to wall.  
Note roughing-in dimensions.



**Protect finish on SHOWER HEAD and TUB SPOUT when installing.**

- 
- HEAD PLASTER GUARD.**
- PLASTER GUARD**
- 1**
- 2**
- 3**
- Figure 1.**

This diagram illustrates the exploded view of a wheel assembly. It includes the following components and callouts:

- 1**: A cylindrical hub or axle component with a flange and a central threaded section.
- 2**: A circular rim or wheel body with a central hub area and a series of spokes.
- 3**: A circular flange or disc that fits onto the rim, featuring a central hub and a series of spokes.
- 4**: A long, threaded bolt or screw used to secure the rim and flange to the hub.

Diagram illustrating the components and assembly steps for a tub faucet and showerhead. The components are numbered 1 through 10:

- 1: HEX WRENCH
- 2: SHR. ELBOW
- 3: PIPE PLUG
- 4: SHOWERHEAD
- 5: TUB FAUCET HANDLE
- 6: TUB FAUCET BODY
- 7: PIPE CAP
- 8: HEX WRENCH
- 9: TUB FILLER NIPPLE
- 10: TUB FAUCET BODY

Assembly steps are indicated by arrows and text:

- Install the TUB FILLER NIPPLE (9) into the TUB FAUCET BODY (6) using the HEX WRENCH (1).
- Install the SHR. ELBOW (2) into the TUB FILLER NIPPLE (9) using the HEX WRENCH (1).
- Install the PIPE PLUG (3) into the SHR. ELBOW (2) using the HEX WRENCH (1).
- Install the SHOWERHEAD (4) onto the PIPE PLUG (3).
- Install the TUB FAUCET HANDLE (5) onto the TUB FAUCET BODY (6) using the HEX WRENCH (1).
- Install the PIPE CAP (7) onto the TUB FAUCET BODY (6) using the HEX WRENCH (1).
- Install the TUB FAUCET BODY (6) into the TUB FAUCET BODY (10) using the HEX WRENCH (1).

# American Standard

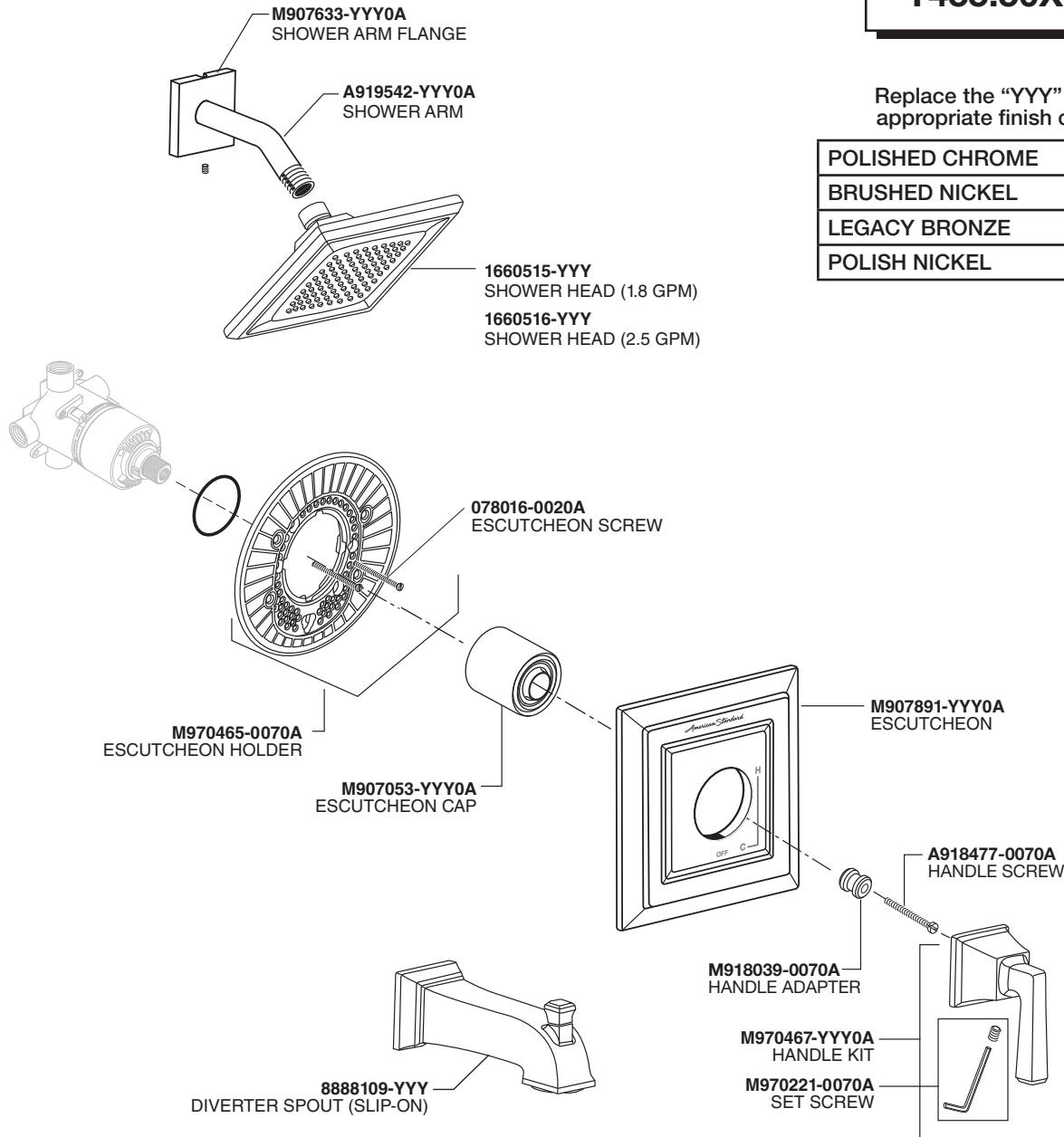
## TOWN SQUARE® S PRESSURE BALANCE BATH AND SHOWER TRIM KIT

MODEL NUMBER

**T455.50X**

Replace the "YYY" with  
appropriate finish code

POLISHED CHROME	002
BRUSHED NICKEL	295
LEGACY BRONZE	278
POLISH NICKEL	013



PART OF **LIXIL**

### HOT LINE FOR HELP

For toll-free information and answers to your questions, call:  
1 (800) 442-1902

Mon. - Fri. 8:00 a.m. to 8:00 p.m. EST  
Saturday 10:00 a.m. to 4:00 p.m. EST

IN CANADA 1-800-387-0369  
(TORONTO 1-905-306-1093)

Weekdays 8:00 a.m. to 7:00 p.m. EST

IN MEXICO 01-800-839-1200

