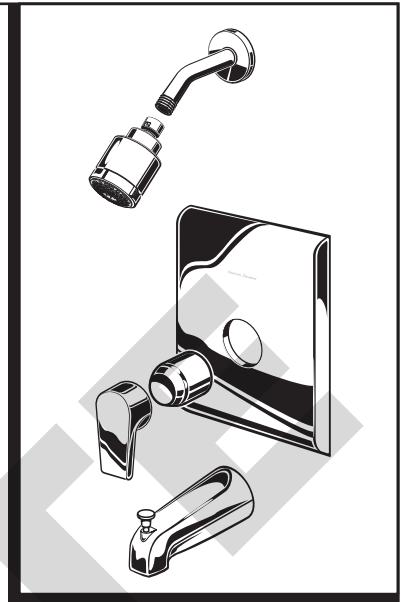


# STUDIO RETROFIT

## PRESSURE BALANCING BATH AND SHOWER TRIM KITS

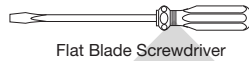
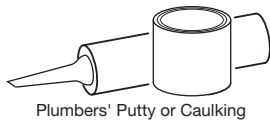
*Thank you for selecting American-Standard...the benchmark of fine quality for over 100 years.*

*To ensure that your installation proceeds smoothly--please read these instructions carefully before you begin.*



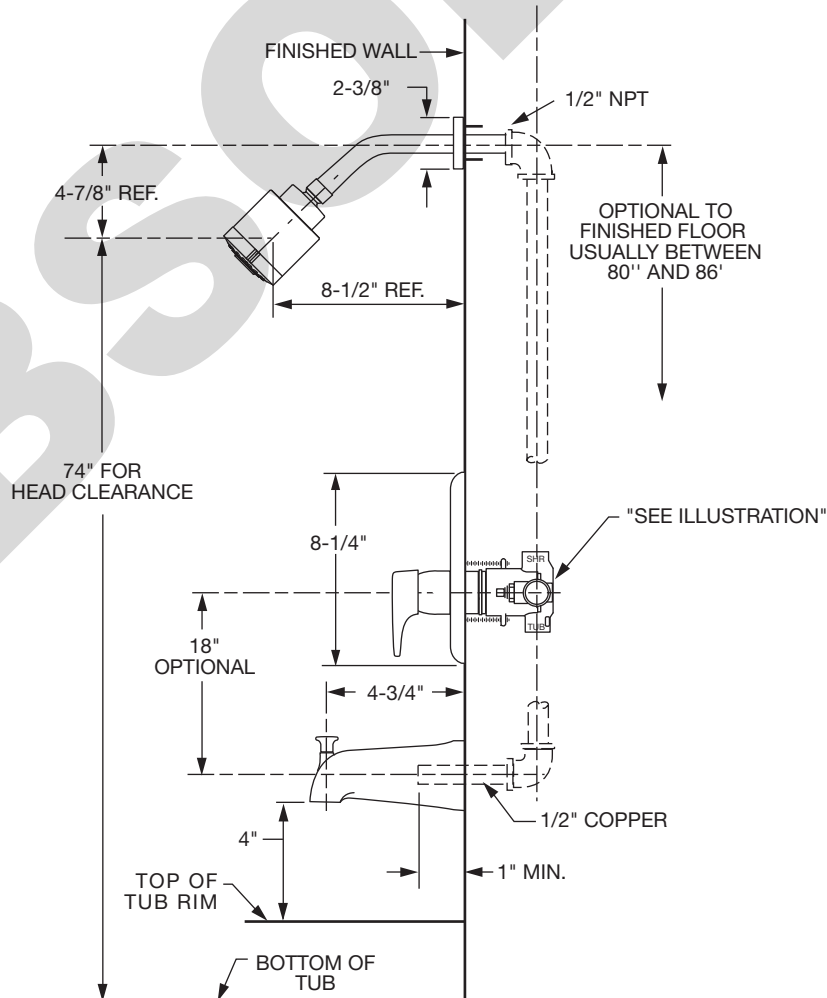
Certified to comply with ANSI A112.18.1  
M965797 Rev. 1.0 (1/17)

### Recommended Tools



### ROUGHING-IN DIMENSIONS (For reference only)

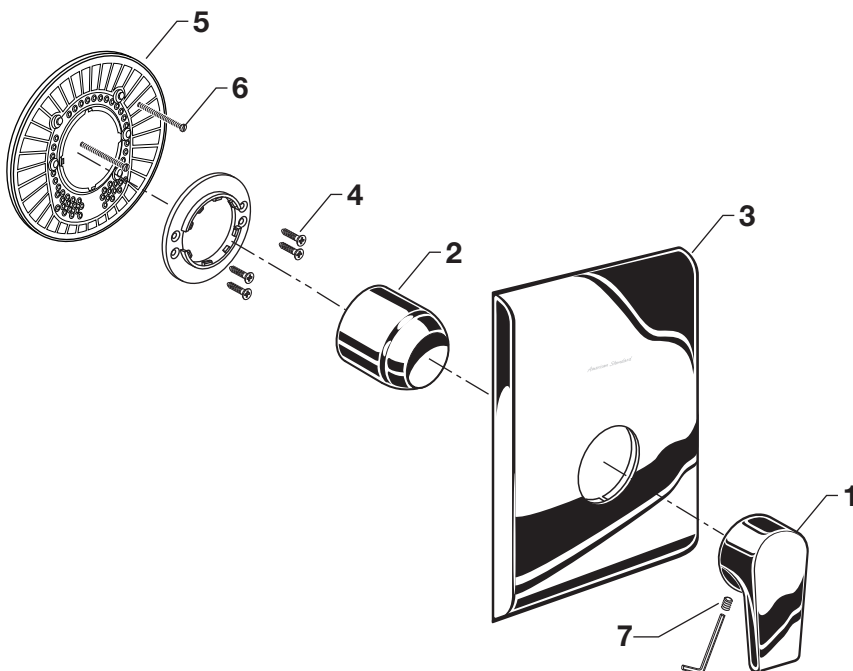
- To assure proper positioning in relation to wall, note roughing-in dimensions.



# 1

## UNINSTALL OLD TRIM

- Unthread SET SCREW (7) and remove HANDLE (1).
- Remove CAP (2) and ESCUTCHEON (3).
- Unthread 4 SHORT SCREW (4).
- Unthread 2 LONG SCREWS (6) and remove ESCUTCHEON HOLDER (5).



# 2

## INSTALL VALVE TRIM

- **Figure 1.** Push cap holder (3) over cartridge (2), then install Cap (1) over valve cartridge (2) and Cap Holder (3) until seated against stop.
- **Figure 2.** Make sure O-RING (8) is secure within ESCUTCHEON HOLDER (3). Push ESCUTCHEON HOLDER (3) onto CAP (1) and attach with LONG SCREWS (4). Mount ESCUTCHEON SUPPORT (5) to ESCUTCHEON HOLDER (3) with 4 SHORT SCREWS (6).
- **Figure 3.** Install ESCUTCHEON (7) onto CAP (1) and push flush against finished wall. Escutcheon (7) will snap fit onto ESCUTCHEON SUPPORT (5).
- **Figure 4.** Install HANDLE (5) onto CARTRIDGE STEM (6). Tighten SET SCREW (7) with HEX WRENCH (8) supplied.

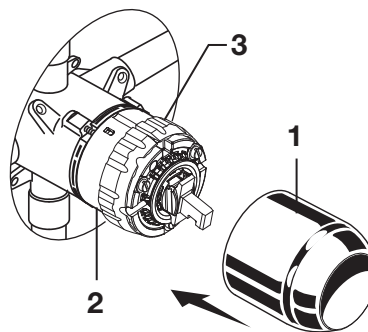


Figure 1.

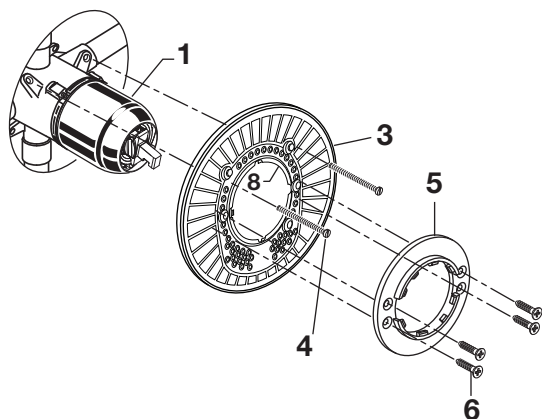


Figure 2.

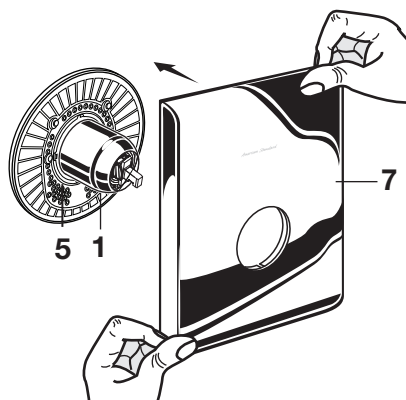


Figure 3.

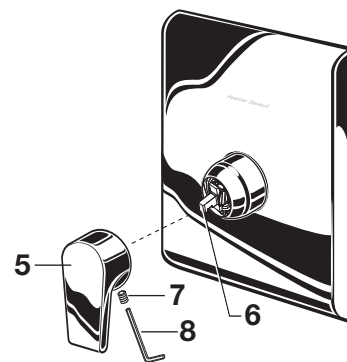


Figure 4.

### CARE INSTRUCTIONS:

**DO: SIMPLY RINSE THE PRODUCT CLEAN WITH CLEAR WATER. DRY WITH A SOFT COTTON FLANNEL CLOTH.**

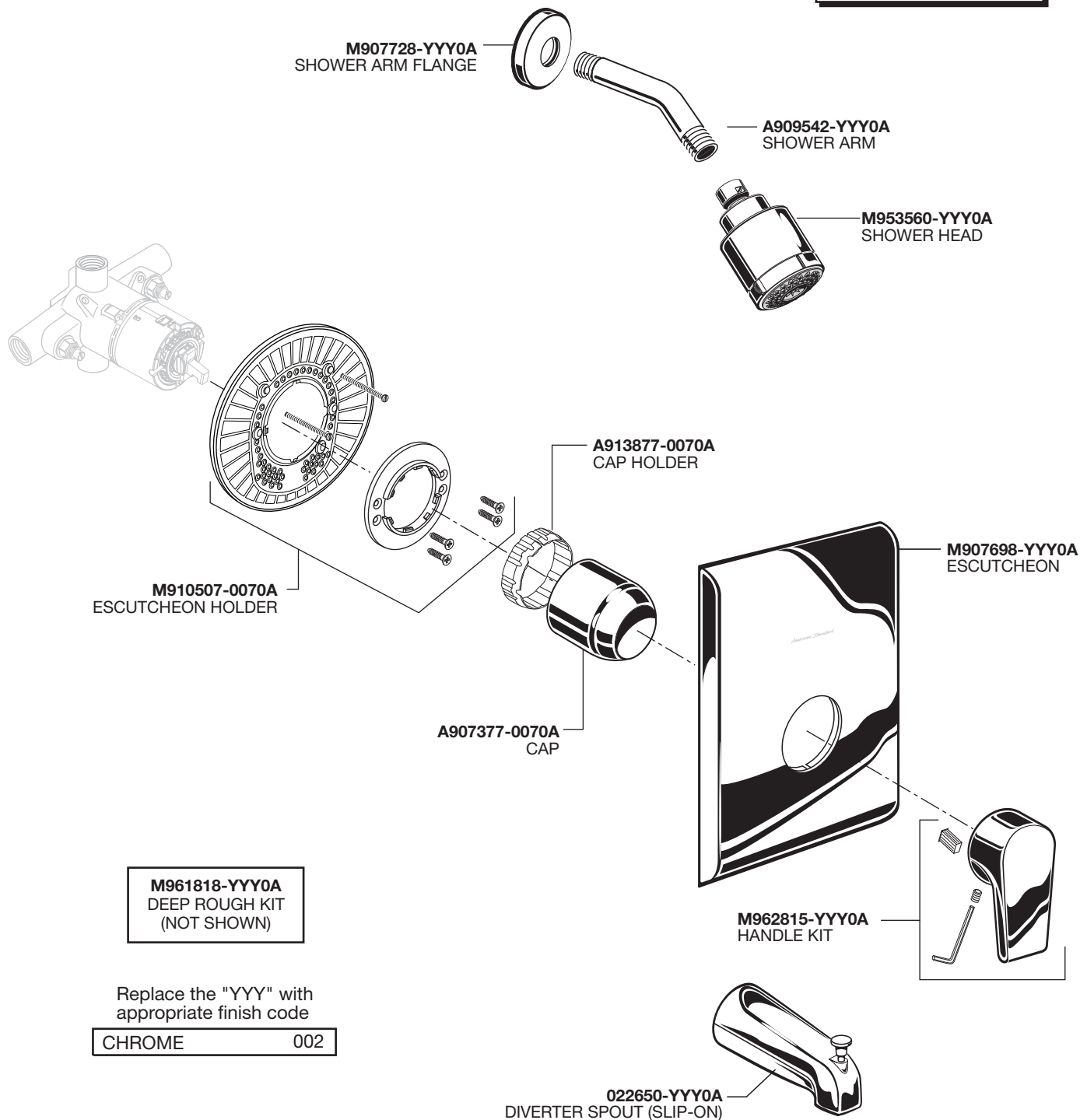
**DO NOT: DO NOT CLEAN THE PRODUCT WITH SOAPS, ACID, POLISH, ABRASIVES, HARSH CLEANERS, OR A CLOTH WITH A COARSE SURFACE.**

*American Standard*

# STUDIO RETROFIT

PRESSURE BALANCING  
BATH AND SHOWER  
TRIM KITS  
MODEL NUMBER

**T590.52X**



## HOT LINE FOR HELP

For toll-free information and answers to your questions, call:  
1 (800) 442-1902

Mon. - Fri. 8:00 a.m. to 8:00 p.m. EST  
Saturday 10:00 a.m. to 4:00 p.m. EST

IN CANADA 1-800-387-0369  
(TORONTO 1-905-306-1093)

Weekdays 8:00 a.m. to 7:00 p.m. EST  
IN MEXICO 01-800-839-1200



Product names listed herein are  
trademarks of AS America, Inc.  
© AS America, Inc. 2017

PART OF **LIXIL**

M965797 Rev. 1.0 (1/17)