

American Standard

HAMPTON

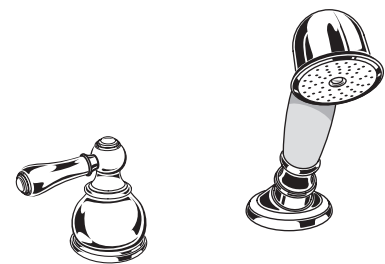
**HAMPTON DIVERTER & PERSONAL
SHOWER TRIM KITS**

Installation Instructions

T991.712

T991.722

T991.732



*Thank you for selecting American-Standard...the benchmark
of fine quality for over 100 years.*

*To ensure that your installation proceeds smoothly—please
read these instructions carefully before you begin.*

Certified to comply with ANSI A112.18.1
U.S. Patent No. D403,750

M968357 Rev. 1.2

Recommended tools



Phillips Screwdriver



Screwdriver



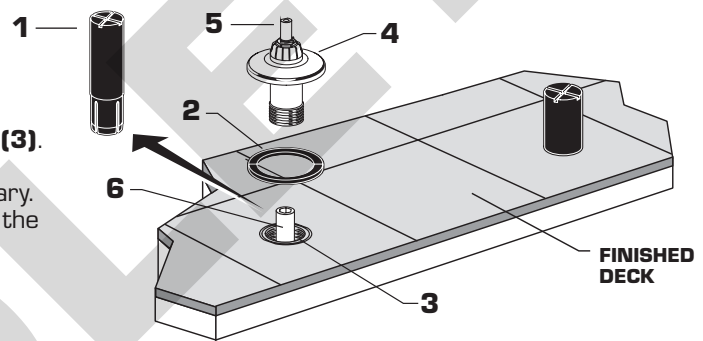
Channel Locks



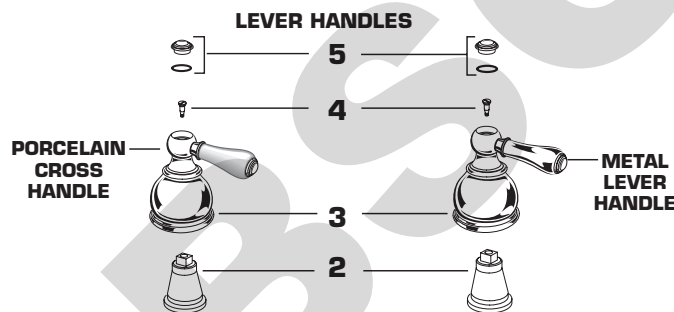
Adjustable Wrench

1 INSTALL DIVERTER

- REMOVE THE DIVERTER GUARD (1).
- Place the ESCUTCHEON SEAL (2) over the DIVERTER BODY (3).
- Align the HANDLE STEM (5) with the SLEEVE (6) as necessary. Thread the VALVE ESCUTCHEON (4) into the BODY (3) until the ESCUTCHEON (4) contacts the finished deck.

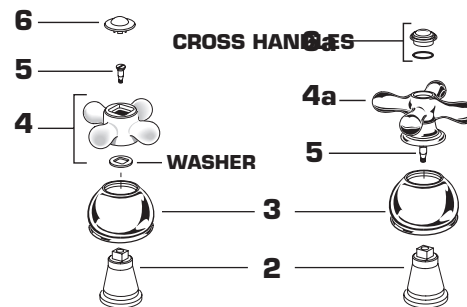
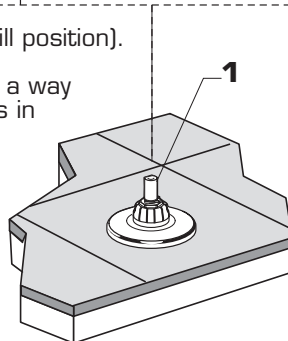


2 INSTALL HANDLES



LEVER HANDLE

- Turn HANDLE STEM (1) fully clockwise (Tub Fill position).
- Push ADAPTER (2) into HANDLE BASE (3) in a way that the male square on the ADAPTER (2) fits in the female square of the HANDLE BASE (3).
- Push HANDLE BASE (3) and ADAPTER (2) onto VALVE STEM (1).
- Check alignment, if not satisfactory aligned;
 - Push out ADAPTER (1) carefully.
 - Turn ADAPTER (1) either 45° or 90° so that male square on ADAPTER (1) catches different female square in HANDLE BASE (3).
 - Assemble and tighten HANDLE SCREW (4).
- Push INDEX CAP (5) in top of HANDLE (6, 6A).



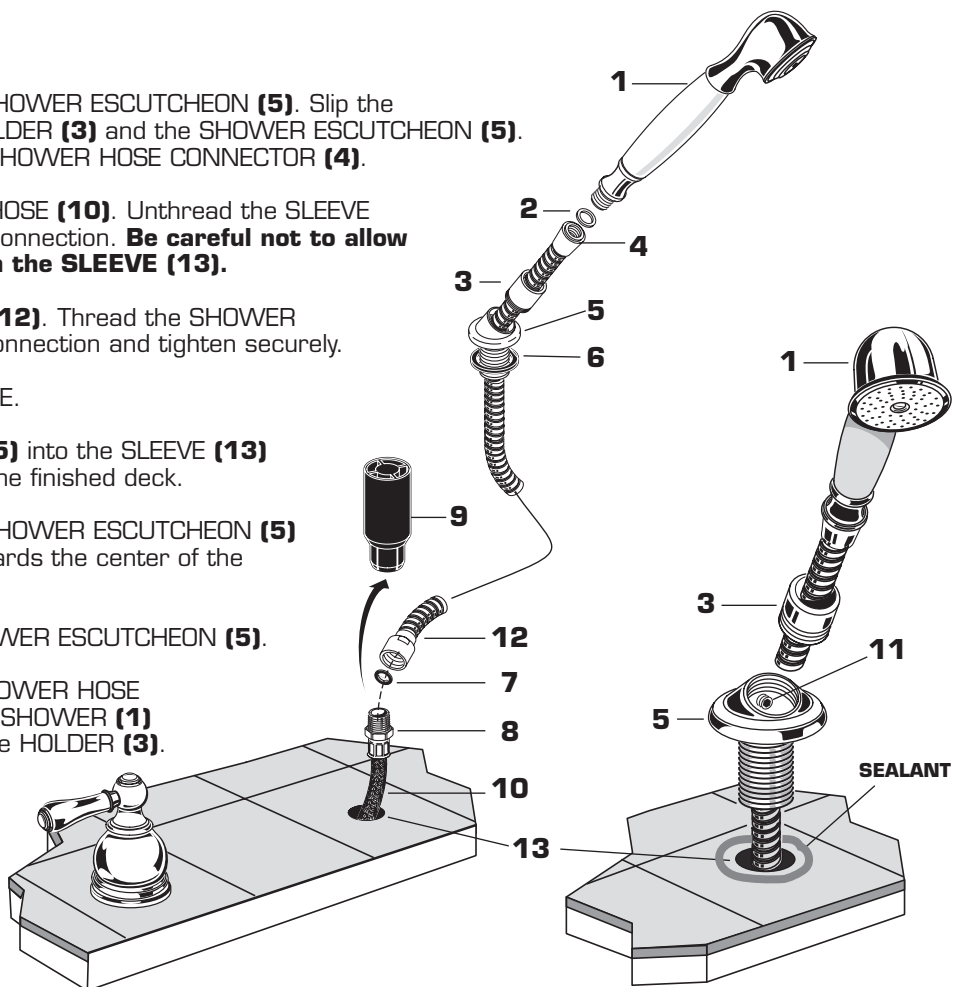
CROSS HANDLE

- Turn HANDLE STEM (1) fully clockwise (Tub Fill position).
- Push ADAPTER (2) into HANDLE BASE (3).
- Push HANDLE BASE (3) and ADAPTER (2) onto VALVE STEM (1).
- Push CROSS (4, 4a) onto ADAPTER (2).
- Assemble and tighten HANDLE SCREW (5).
- Push INDEX CAP (6, 6a) in top of HANDLE (4, 4a).

3

INSTALL HAND SHOWER

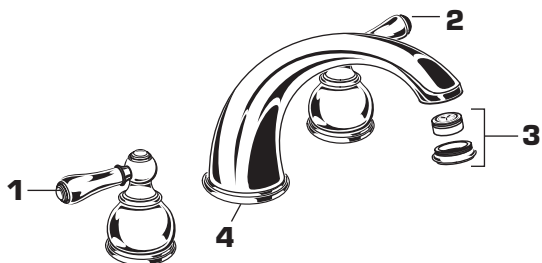
- Unscrew the HOLDER (3) from the SHOWER ESCUTCHEON (5). Slip the SHOWER HOSE (12) through the HOLDER (3) and the SHOWER ESCUTCHEON (5). Insert a SEAL WASHER (2) into the SHOWER HOSE CONNECTOR (4).
- Pull out the SLEEVE GUARD (9) and HOSE (10). Unthread the SLEEVE GUARD (9) from the HOSE END (8) connection. **Be careful not to allow the HOSE (10) to fall back through the SLEEVE (13).**
- Install SEAL WASHER (7) into HOSE (12). Thread the SHOWER HOSE (12) onto the HOSE END (8) connection and tighten securely.
- Apply a sealant around the HOSE HOLE.
- Thread the SHOWER ESCUTCHEON (5) into the SLEEVE (13) until the ESCUTCHEON (5) contacts the finished deck.
- Loosen the SET SCREW (11) in the SHOWER ESCUTCHEON (5) and rotate the ESCUTCHEON (5) towards the center of the tub. Retighten the SET SCREW (11).
- Thread the HOLDER (3) into the SHOWER ESCUTCHEON (5).
- Insert SEAL WASHER (2) into the SHOWER HOSE CONNECTOR (4). Connect the HAND SHOWER (1) and place the HAND SHOWER into the HOLDER (3).



4

TESTING

- Turn the HOT HANDLE (1) clockwise and the COLD HANDLE (2) counterclockwise to the off position.
- Unscrew and remove the SPOUT END (3).
- Slowly turn on the water supplies.
- Operate the HANDLES (1, 2) to flush water lines thoroughly. Check SPOUT (4) connection for leakage.
- Turn the Handles off. Replace the SPOUT END (3).

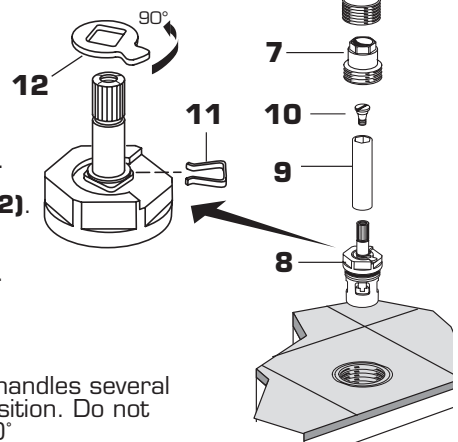


5

SERVICE

To change the direction of handle rotation

- Turn off the water supplies
- Turn HANDLE (1) to the off position.
- Remove the INDEX CAP (2) and the HANDLE SCREW (3). Pull the HANDLE BASE (4) off and remove ADAPTER (5).
- Unscrew the VALVE ESCUTCHEON (6).
- Unscrew the VALVE LOCK NUT (7) and remove. A 17mm deep socket is required.
- Remove the CARTRIDGE (8) by pulling up on the SLEEVE (9).
- Remove the SCREW (10) from the CARTRIDGE (8).
- Remove the SPRING CLIP (11).
- Remove the STOP WASHER (12). Turn it 90° and replace.
- Replace the SPRING CLIP (11).
- Reverse the above steps to reassembly the components.
- If the spout drips, operate the handles several times from the off to the on position. Do not force - the handles only turn 90°



6

CARE INSTRUCTIONS:

DO: SIMPLY RINSE THE PRODUCT CLEAN WITH CLEAR WATER. DRY WITH A SOFT COTTON FLANNEL CLOTH.
DO NOT: DO NOT CLEAN THE PRODUCT WITH SOAPS, ACID, POLISH, ABRASIVES, HARSH CLEANERS, OR A CLOTH WITH A COARSE SURFACE.

American Standard

HAMPTON

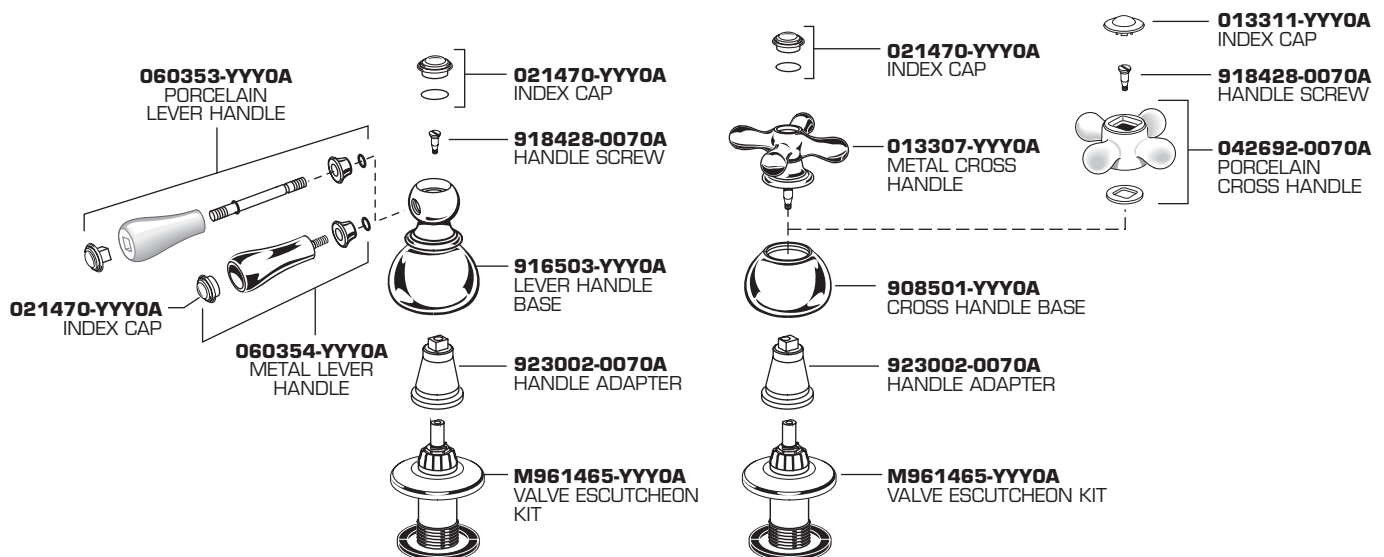
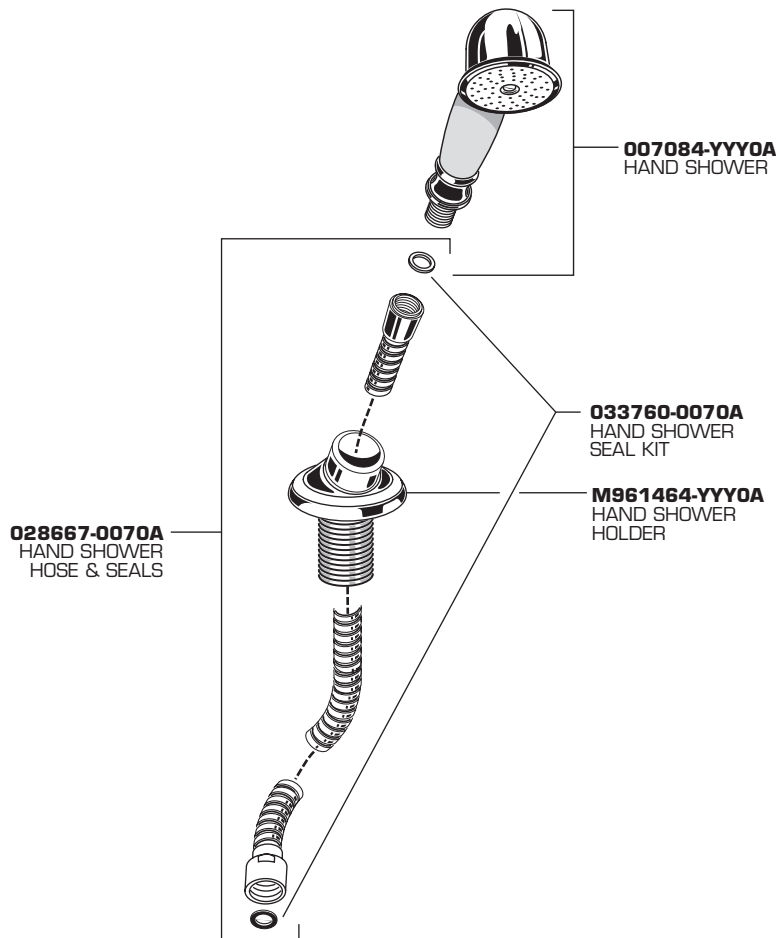
DECK-MOUNT BATH FILLER TRIM KIT

MODEL NUMBER

T991.712
T991.722
T991.732

Replace the "YYY" with
appropriate finish code

CHROME	002
BLACKENED BRONZE	068
POL. BRASS	099
SATIN/CHROME	221
SATIN NICKEL	295
SATIN/ BRASS	297
CHROME/BRASS	299



HOT LINE FOR HELP

For toll-free information and answers to your questions, call:
1-800-442-1902
Weekdays 8:00 a.m. to 6:00 p.m. EST
IN CANADA 1-800-367-0369 (TORONTO 1-905-306-1093)
Weekdays 8:00 a.m. to 7:00 p.m. EST
IN MEXICO 01-800-839-12-00

Product names listed herein are trademarks of American Standard Inc.
© AS America, Inc. 2008

M968357 Rev. 1.2