

# INSTALLATION INSTRUCTIONS CARE AND MAINTENANCE

## Triangle Cadet® 3 2-piece Toilet

### 270AD Elongated Series

### 270BD Round Front Series

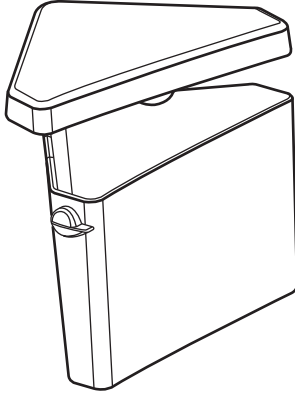
*American  
Standard*

Thank you for selecting American Standard - the benchmark of fine quality for over 100 years. To ensure this product is installed properly, please read these instructions carefully before you begin. (Certain installations may require professional help.) Also be sure your installation conforms to local codes.

**⚠ CAUTION: PRODUCT IS FRAGILE. TO AVOID BREAKAGE AND POSSIBLE INJURY HANDLE WITH CARE!**

NOTE: Pictures may not exactly define contour of china and components.

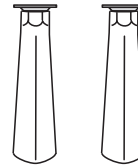
#### TANK 4338



#### EZ-INSTALL KIT INCLUDED WITH TANK



Tank To Bowl Gasket



Attachment Handles  
with Nuts (2)

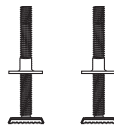


Plastic Washers (2)

#### BOWL 3517A ELONGATED BOWL 3517B ROUND FRONT



#### EZ-INSTALL KIT INCLUDED WITH BOWL



T-Bolts with  
Retainer (2)

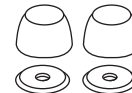


Bolt Caps (2)

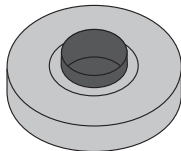


Bowl-To-Floor  
Knobs (2)

Also includes Standard Bolt Caps (2)



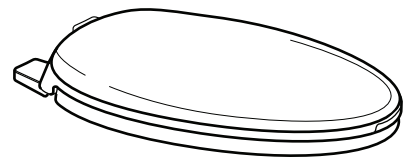
#### SOLD SEPARATELY



Wax Ring



Water Supply Line



Slow Close Toilet Seat

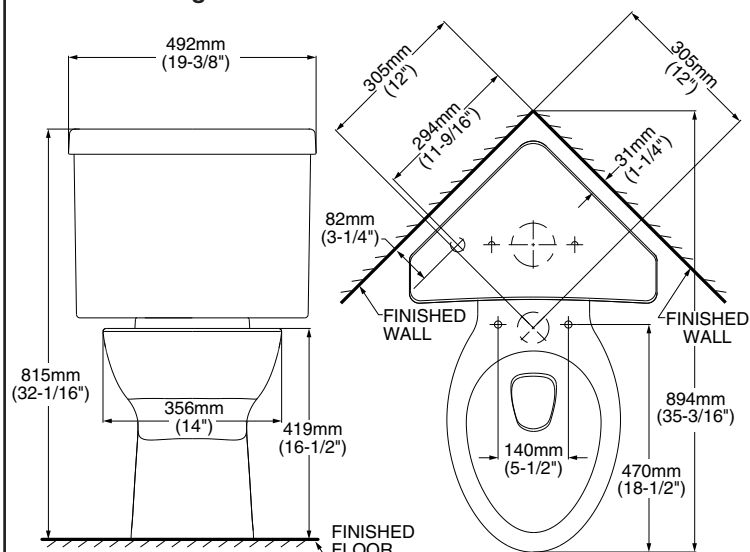


Product names listed herein are trademarks of AS America, Inc.  
© AS America, Inc. 2013

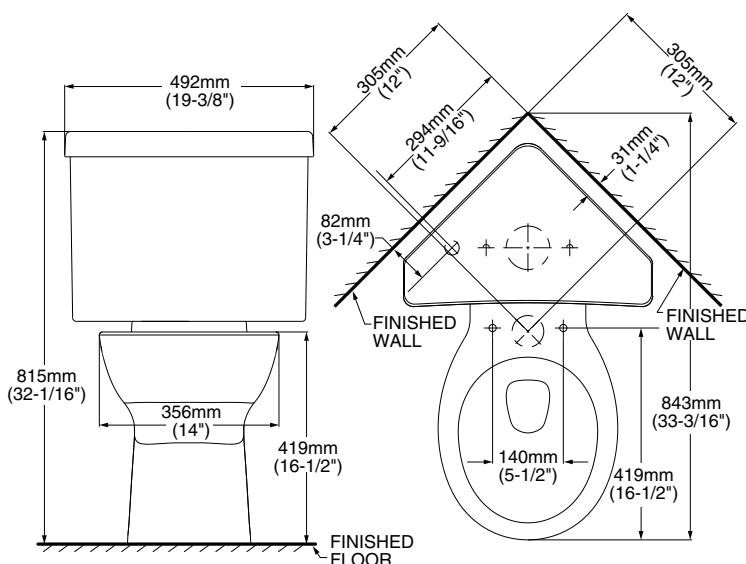
7301981-100 Rev. A

SAVE FOR FUTURE USE

## Elongated Model 270AD Series



## Round Front Model 270BD Series

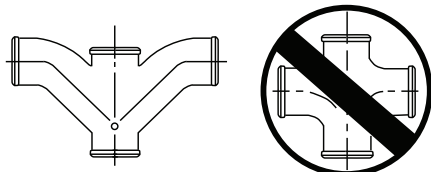


## If Removing An Existing Toilet

**Flush to remove water from tank; sponge remaining water from bowl before removing toilet.**



**Caution:** If leaving floor flange open for more than 1-2 hours, cover flange to prevent escaping sewer gases.

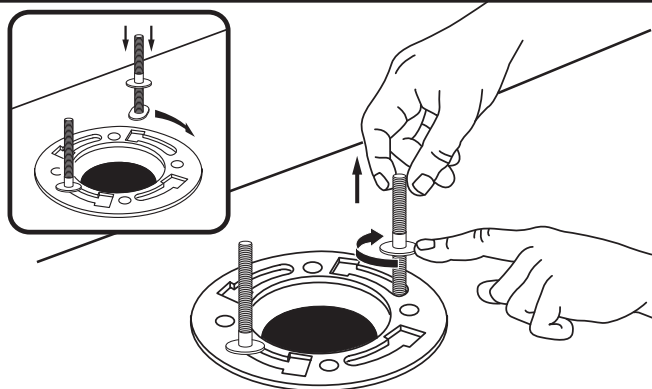


Recommended fitting type for  
back-to-back installations.

## BACK-TO-BACK INSTALLATION

Depending upon your plumbing and venting conditions, the flow from the Cadet® 3 in a back-to-back installation may create a vacuum on the system and draw water from the opposing bowl. The National Standards Plumbing Code prohibits the use of a cross fitting for drainage as throw over is possible. The code does approve a directional "Y" style fitting with proper venting to direct the water downward and away from the other toilet.

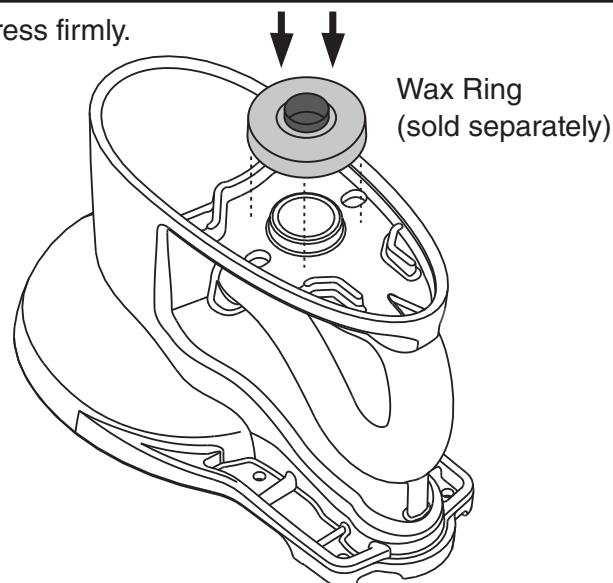
1



**NOTE: 1/4" EZ-BOLTS INCLUDED.**  
IF 5/16" BOLTS ARE REQUIRED,  
PURCHASE SEPARATELY.

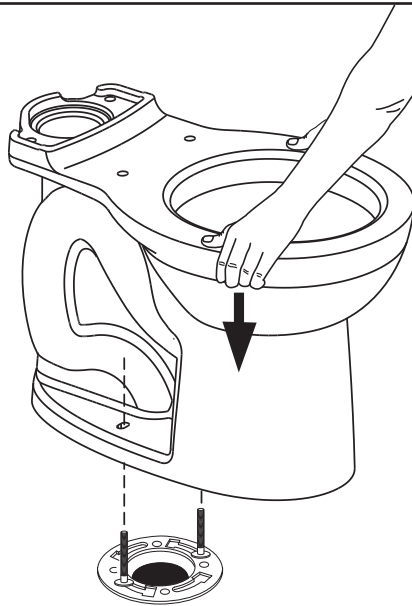
2

Press firmly.



3

Apply weight evenly.  
Do not move after  
placement. Water  
tight seal may break.

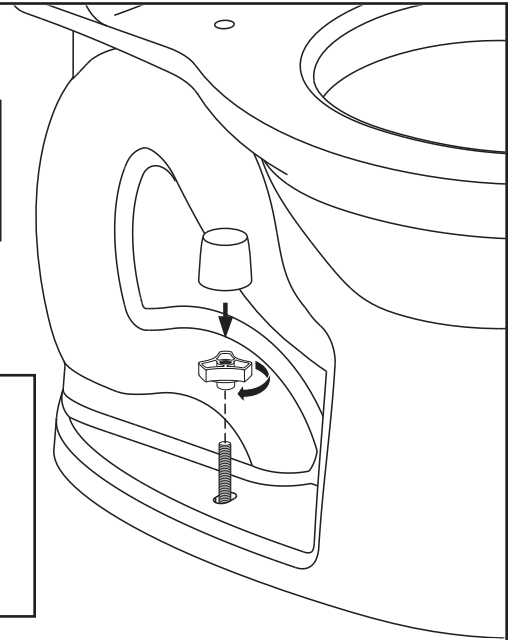


4

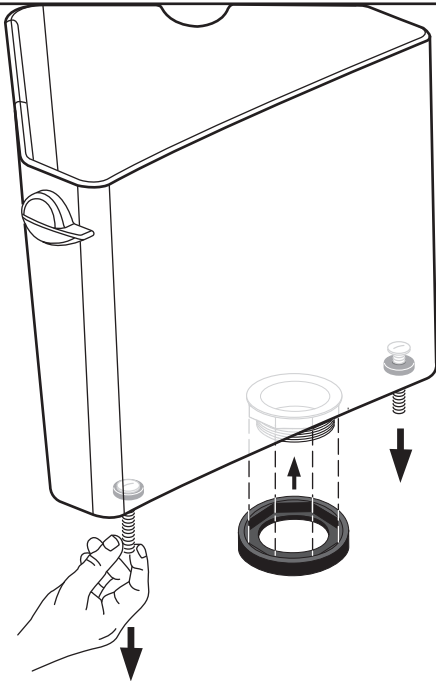
**!** Hand tighten  
only. Do not  
overtighten.

**NOTE:** 1/4" EZ-BOLT  
AND CAP SHOWN.

IF 5/16" BOLT USE  
STANDARD DISK AND  
CAP INCLUDED.



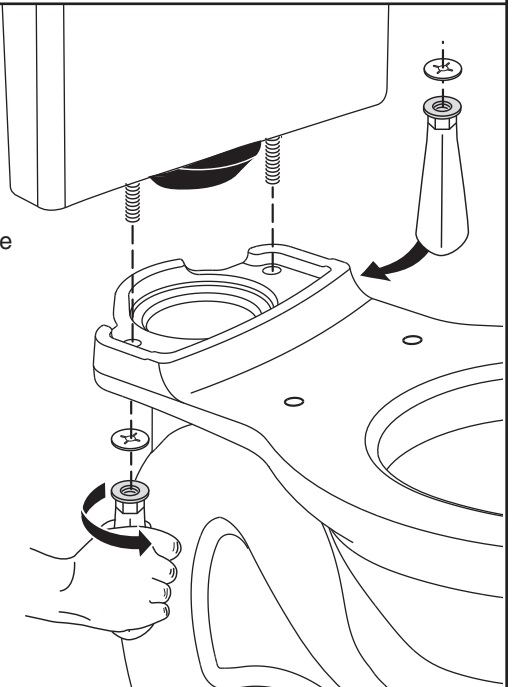
5



6

Tighten handles  
alternately until the  
tank contacts the  
front and back of the  
bowl achieving  
china-to-china  
contact.

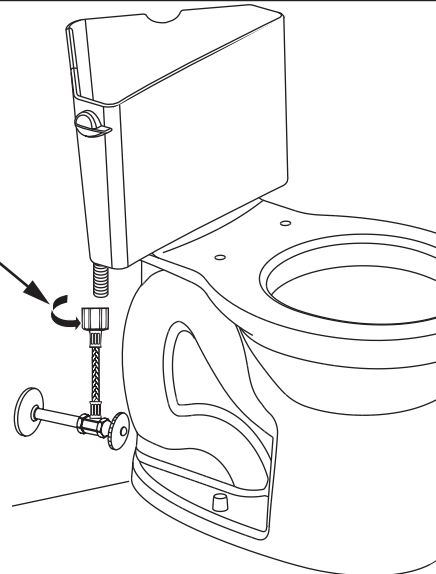
**NOTE:** To ease  
installation, push  
down on the top of  
the tank while  
tightening handles.



7

**A**  
Connect water  
supply line.  
(Sold separately)  
Hand tighten nut.

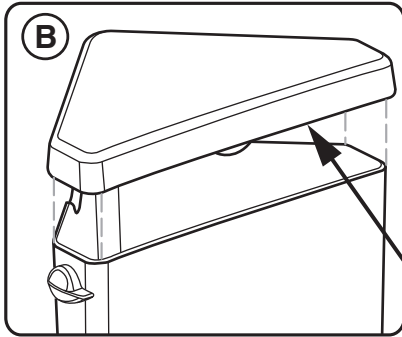
**B**  
Turn on water supply.



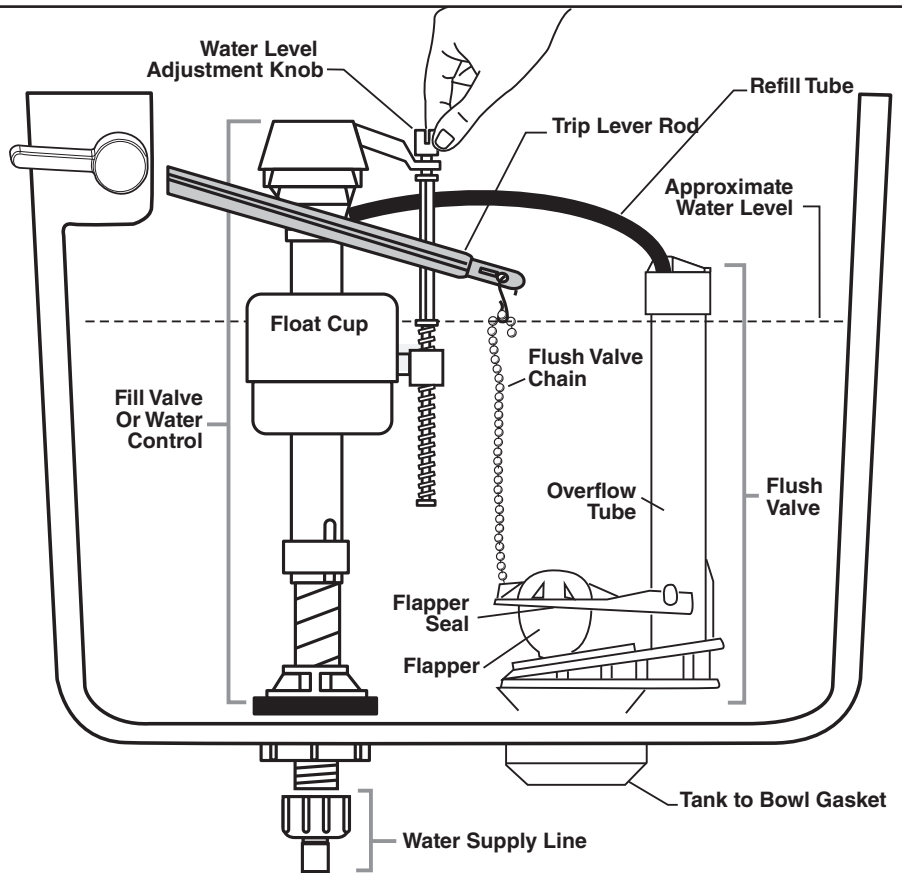
**WARNING:** Overtightening of  
water supply line nuts could  
result in breakage and potential  
flooding. If the connection leaks  
after hand tightening, replace  
the supply line. Do not use any  
type of sealant on the water  
supply connection. Use of  
plumber's putty, pipe dope, or  
any other type of sealant will  
void the warranty.

**A**

Adjust water level to level indicated on tank by turning water level adjustment knob to move float cup up or down.

**B**

**REPAIR PARTS LABEL  
LOCATED UNDER TANK LID.**



## CARE AND CLEANING

When cleaning your toilet, wash it with mild, soapy water, rinse thoroughly with clear water and dry with a soft cloth.

**WARNING:** Do not use in-tank cleaners. These products can seriously corrode fittings in the tank. This damage can cause leakage and property damage. American Standard shall not be responsible or liable for any damage caused by the use of in-tank cleaners.

## TROUBLESHOOTING GUIDE - See Step 8 For Diagram

Problem	Possible Cause	Corrective Action
Does not flush	a. Water supply valve closed. b. Supply line blocked. c. Flush valve chain too loose or disconnected. d. Sand or debris lodged in water control.	a. Open valve and allow water to fill tank. b. Shut off water supply, disconnect supply line and inspect all gaskets and washers. Reassemble. c. Readjust chain length as required. d. Shut off water supply. Remove cap and clean as per Fluidmaster maintenance instructions at: <a href="http://www.americanstandard-us.com/enews/fluidmasterguide.pdf">www.americanstandard-us.com/enews/fluidmasterguide.pdf</a>
Poor or sluggish flush	a. Bowl water level too low. b. Supply valve partly closed. c. Partially clogged trapway and/or drain pipe and/or vent. d. Supply pressure too low.	a. Check that refill tube is connected to water control and inserted into overflow tube without being kinked or damaged. b. Open supply valve fully. Be sure that proper supply tube size is used. c. Remove obstruction. Consult a plumber if necessary. d. Normal supply pressure must be at least 20 psi.
Toilet leaks	a. Poor supply line connection. b. Poor bowl to tank/floor connection.	a. Review Step 7 of installation procedure. b. Review Step 1 through 6 of installation procedure.
Toilet does not shut off	a. Flapper seal leaking or deformed. b. Sand or debris lodged in water control. c. Flush valve chain too tight, holding flapper open.	a. Clean debris from seal surface. Replace flapper seal as needed. See web for more info. b. Shut off water supply. Remove cap and clean as per Fluidmaster maintenance instructions at: <a href="http://www.americanstandard-us.com/enews/fluidmasterguide.pdf">www.americanstandard-us.com/enews/fluidmasterguide.pdf</a> c. Readjust chain length as needed.
Toilet bowl rocks after installation	a. Wax ring not fully compressed. b. Floor not level.	a. Retighten bowl-to-floor knobs. b. Use toilet shims and /or place a bead of caulk around the base of the toilet.

## FOR REPAIR PARTS LIST, SEE LABEL UNDER TANK LID.

### In the United States:

American Standard Brands  
P.O. Box 6820  
Piscataway, New Jersey 08855  
Attention: Director of Customer Care  
For residents of the United States, warranty information may also be obtained by calling the following toll free number: (800) 442-1902  
[www.americanstandard.com](http://www.americanstandard.com)

### In Canada:

AS Canada, ULC  
5900 Avebury Rd.  
Mississauga, Ontario  
Canada L5R 3M3  
Toll Free: (800) 387-0369  
[www.americanstandard.ca](http://www.americanstandard.ca)

### In Mexico:

American Standard B&K Mexico  
S. de R.L. de C.V.  
Via Morelos #330  
Col. Santa Clara  
Ecatepec 55540 Edo. Mexico  
Toll Free: 01-800-839-1200  
[www.americanstandard.com.mx](http://www.americanstandard.com.mx)