

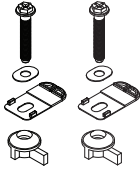
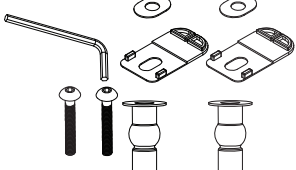
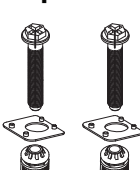
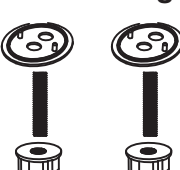
INSTALLATION INSTRUCTIONS

TOILET SEAT

American Standard

Thank you for selecting American Standard – the benchmark of fine quality for over 100 years. To ensure this product is installed properly, please read these instructions carefully before you begin. (Certain installations may require professional help.) Also be sure your installation conforms to local codes.

NOTE: Pictures may not exactly depict toilet seat and components.

IF YOU HAVE...	Bottom Mount	Top Mount	Bottom Mount with Zip Nuts	Bottom Mount w/ Posts for Metal Hinges
				
	See Installation 1 on page 1	See Installation 2 on page 2	See Installation 3 on page 3	See Installation 4 on page 4

Care and Cleaning

When cleaning your toilet seat wash it with a mild, soapy water: rinse the seat thoroughly with clear water and dry with a soft cloth.

Avoid detergents, disinfectants, or cleaning products in aerosol cans. Never use abrasive scouring powders on your seat. Some bathroom chemicals and cosmetics may damage the seat's finish. After installation, check the tightness of the bolts from time to time to ensure a tight fit.

AS AMERICA, INC. ONE YEAR LIMITED WARRANTY

If inspection of this AS America, Inc. ("American Standard") plumbing product, within one year after its initial purchase, confirms that it is defective in materials or workmanship, American Standard will repair or, at its option, exchange the product for a similar model.

This limited warranty applies only to the original purchaser and installation of these products. In the event of a limited warranty claim, proof of purchase will be required—save sales receipt.

This limited warranty does not apply to local building code compliance. Since local building codes vary considerably, the purchaser of this product should check with a local building or plumbing contractor to insure local code compliance before installation.

This limited warranty is void if the product has been moved from its initial place of installation; if it has been subjected to faulty maintenance, abuse, misuse, accident or other damages; if it was not installed in accordance with American Standard's instructions; or if it has been modified in a manner inconsistent with the product as shipped by American Standard.

American Standard's option to repair or exchange the product under this limited warranty does not cover any labor or other costs of removal or installation. IN NO EVENT WILL AMERICAN STANDARD BE LIABLE FOR THE COST OF REPAIR OR REPLACEMENT OF ANY INSTALLATION MATERIALS, INCLUDING BUT NOT LIMITED TO, TILES, MARBLE, ETC. American Standard will not be responsible for any other incidental or consequential damages attributable to a product defect or to the repair or exchange of a defective product, all of which are expressly excluded from this limited warranty. This limited warranty does not cover any liability for consequential or incidental damages, all of which are hereby expressly disclaimed, or the extension beyond the duration of this limited warranty of any implied limited warranties, including those of merchantability or fitness for an intended purpose. (Some states or provinces do not allow the exclusion or limitation of implied limited warranties, so this exclusion may not apply to you.)

This limited warranty gives you specific legal rights. You may have other statutory rights that vary from state to state or from province to province, in which case this limited warranty does not affect such statutory rights.

In the United States:
American Standard Brands
1 Centennial Ave
Piscataway, New Jersey 08854
Attention: Director of Customer Care

For residents of the United States, warranty information may also be obtained by calling the following toll free number: (800) 442-1902
www.americanstandard.com

In Canada:
LIXIL Canada, ULC
5900 Avebury Rd.
Mississauga, Ontario
Canada L5R 3M3

Toll Free: (800) 387-0369
www.americanstandard.ca

In Mexico:
American Standard B&K Mexico
S. de R.L. de C.V.
Via Morelos #330
Col. Santa Clara
Ecatepec 55540 Edo. Mexico

Toll Free: 01-800-839-1200
www.americanstandard.com.mx



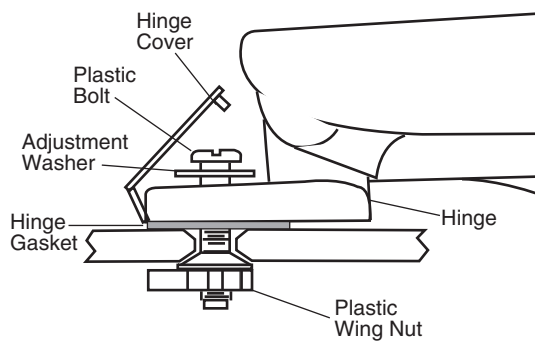
All product names listed herein are trademarks of AS America, Inc. unless otherwise noted.
© AS America, Inc. 2017

7302106-100 Rev. E 11/17

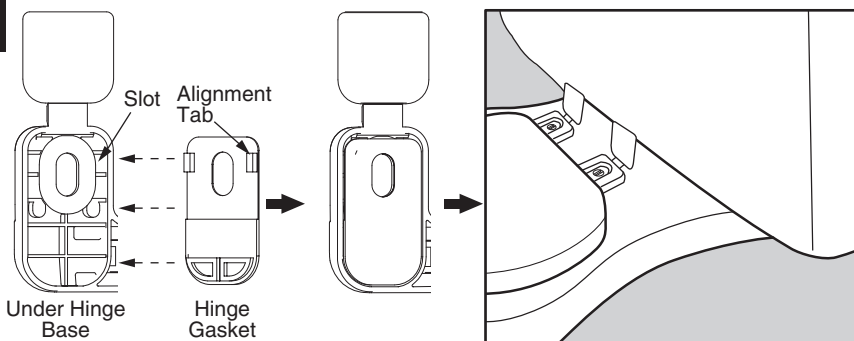
SAVE FOR FUTURE USE

INSTALLATION #1 - BOTTOM MOUNT WITH PLASTIC WINGNUT

Side view of the toilet seat installation parts.



1



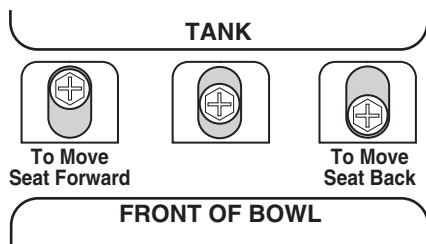
Attach Hinge Gaskets to bottom of Hinge Base. Make sure Alignment Tabs on Hinge Gaskets match the slots under the Hinge Base.

Align hinges over holes on toilet bowl.

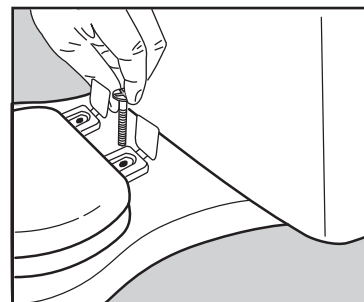
2

The installation kit includes two sets of stainless washers: 2 with center holes and 2 with offset holes.

The offset washers hole can be set forward or back allowing the seat to be moved back from or to the forward edge of the bowl rim.

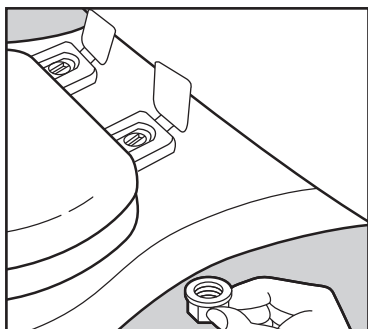


3



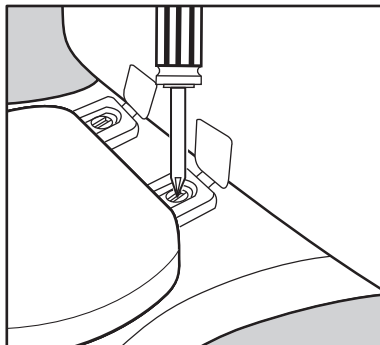
When the seat is properly aligned with the front edge of the bowl slip the bolt through the washer and the bowl bolt holes.

4



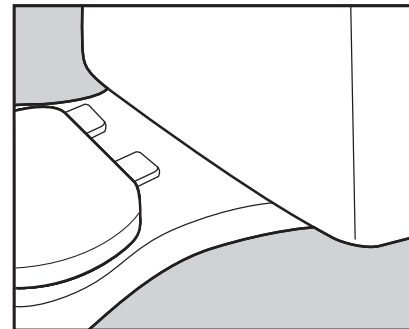
With the plastic bolts installed, thread the winged plastic nuts on to the bolts.

5



Tighten the bolts using a screwdriver.

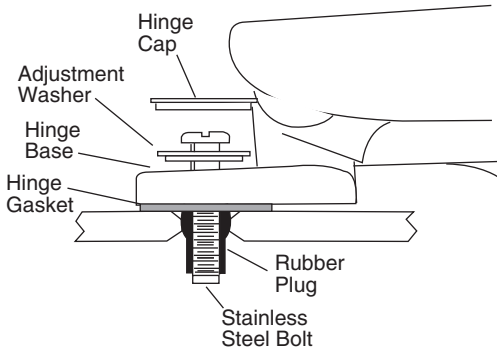
6



The hinge cap covers are designed to snap lock on to the hinge. Position the hinge covers and push down on the cover.

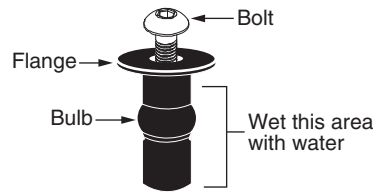
INSTALLATION #2 - TOP MOUNT WITH RUBBER PLUG

Side view of the toilet seat installation parts.



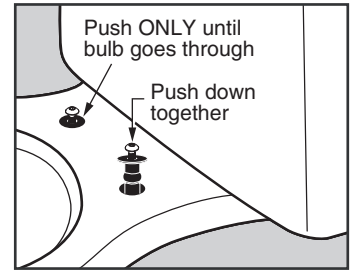
1

PLUG



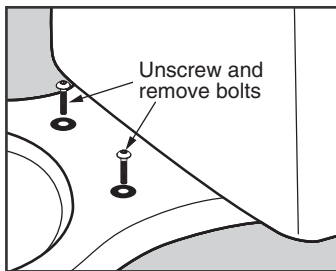
For ease of installation of black rubber plugs, insert steel bolt (capture a few threads) and wet the lower area with some water (soapy water works best).

2



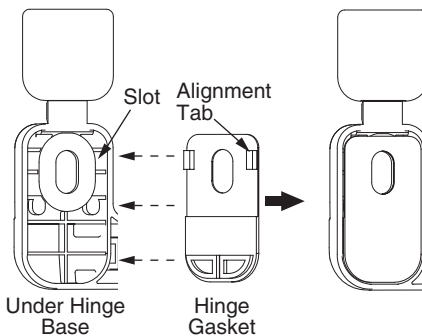
NOTE: FLANGE MUST REMAIN ABOVE THE SURFACE.
DO NOT ALLOW PLUG TO FALL THROUGH!

3

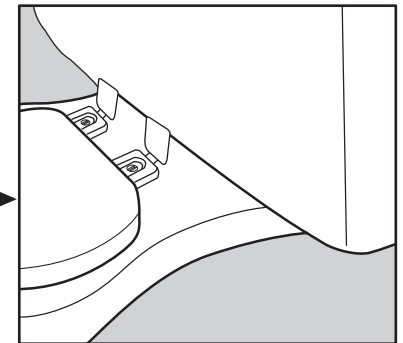


Once plug is in place, unscrew and remove bolts and keep nearby for step 6.

4

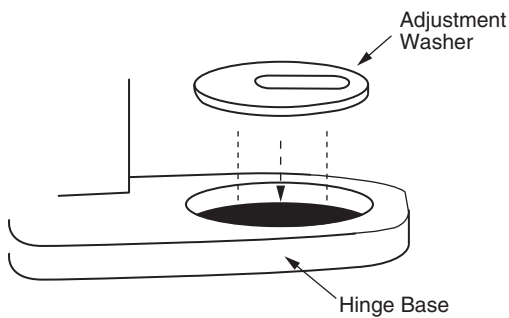


Attach Hinge Gaskets to bottom of Hinge Base. Make sure Alignment Tabs on Hinge Gaskets match the slots under the Hinge Base.



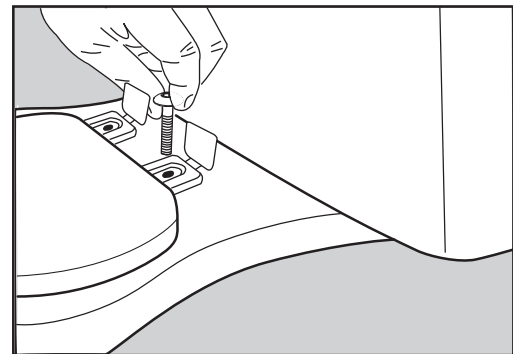
Align hinges over holes on toilet bowl.

5



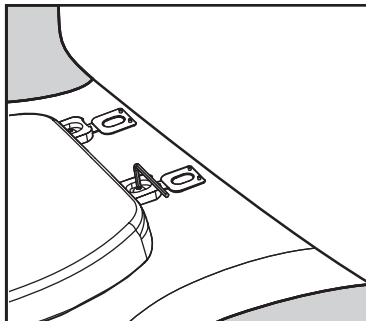
Insert the plastic adjustment washers with flat surface facing up.

6



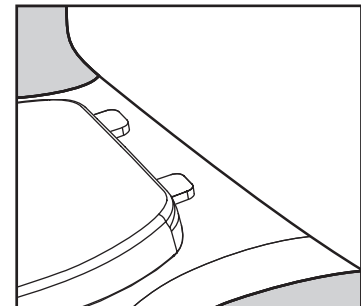
When the seat is properly aligned with the front edge of the bowl, slip the bolt through the washer and the bowl bolt holes.

7



Once properly positioned, tighten the bolts with your wrench.

8

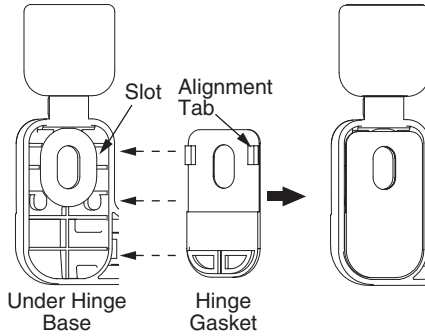
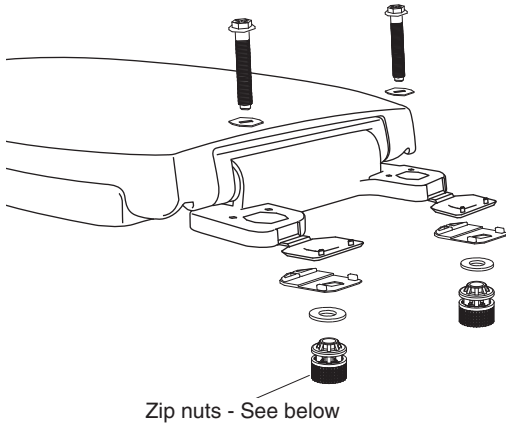


The hinge cap covers are designed to snap lock on to the hinge. Position the hinge covers and push down on the cover.

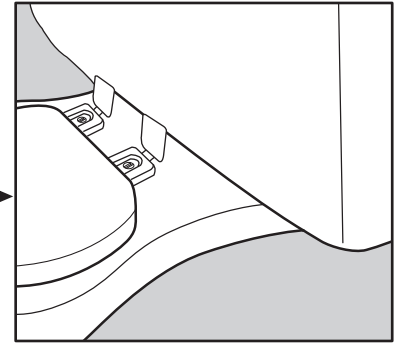
INSTALLATION #3 - BOTTOM MOUNT WITH ZIP NUTS

Side view of the toilet seat installation parts.

1



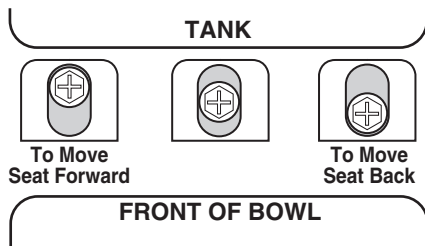
Attach hinge gaskets to bottom of hinge base. Make sure alignment tabs on hinge gaskets match the slots under the hinge base.



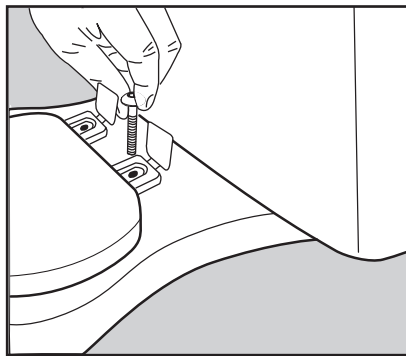
Align hinges over holes on toilet bowl.

2

The installation kit includes two sets of stainless washers: 2 with center holes and 2 with offset holes. The offset washers hole can be set forward or back allowing the seat to be moved back from or to the forward edge of the bowl rim.

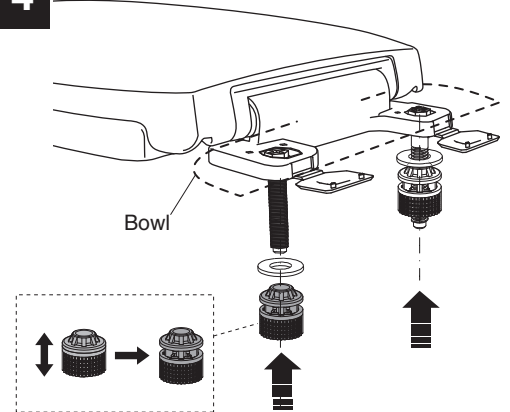


3



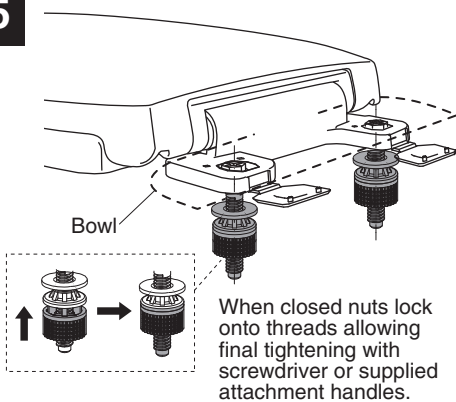
When the seat is properly aligned with the front edge of the bowl, slip the bolt through the washer and the bowl bolt holes.

4



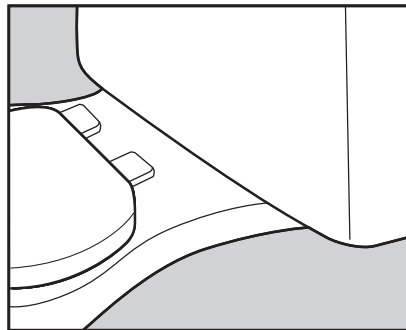
When opened, nuts can slip over threads for rapid installation.

5



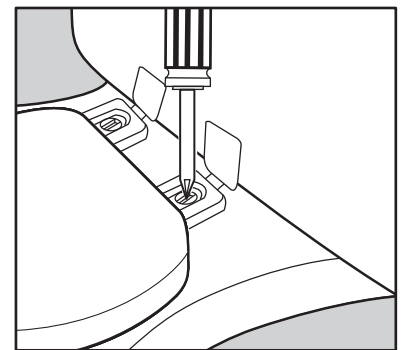
When closed nuts lock onto threads allowing final tightening with screwdriver or supplied attachment handles.

6



The hinge cap covers are designed to snap lock on to the hinge. Position the hinge covers and push down on the cover.

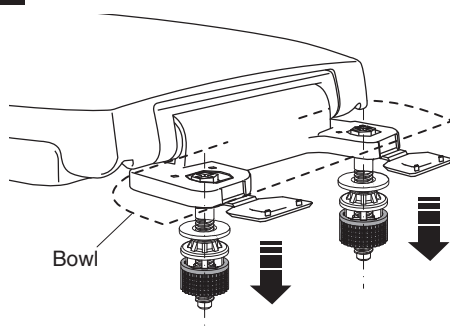
7



Tighten the bolts using a screwdriver.

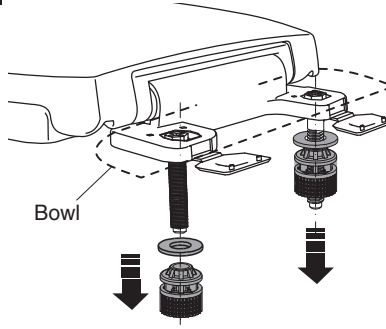
8

REMOVAL



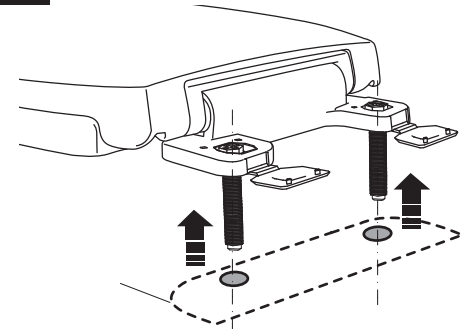
9

REMOVAL



10

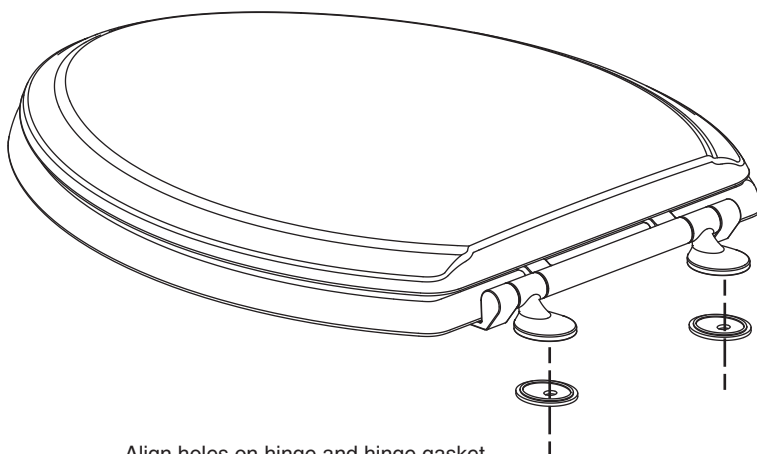
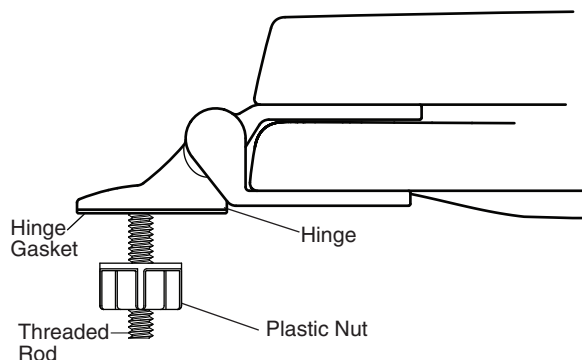
REMOVAL



INSTALLATION #4 - BOTTOM MOUNT WITH POSTS FOR METAL HINGES

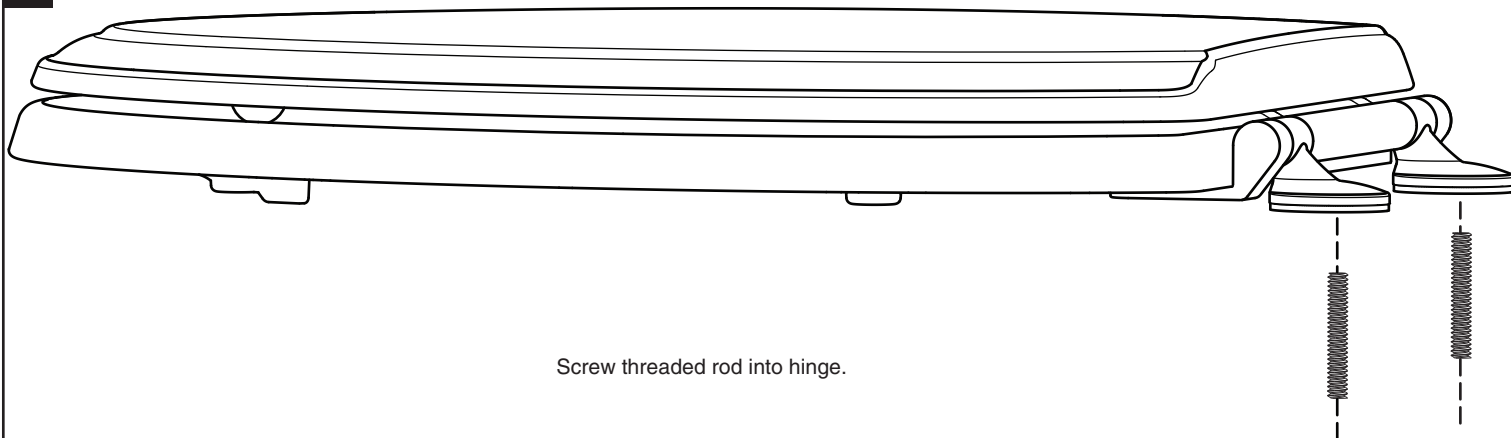
Side view of the toilet seat installation parts.

1



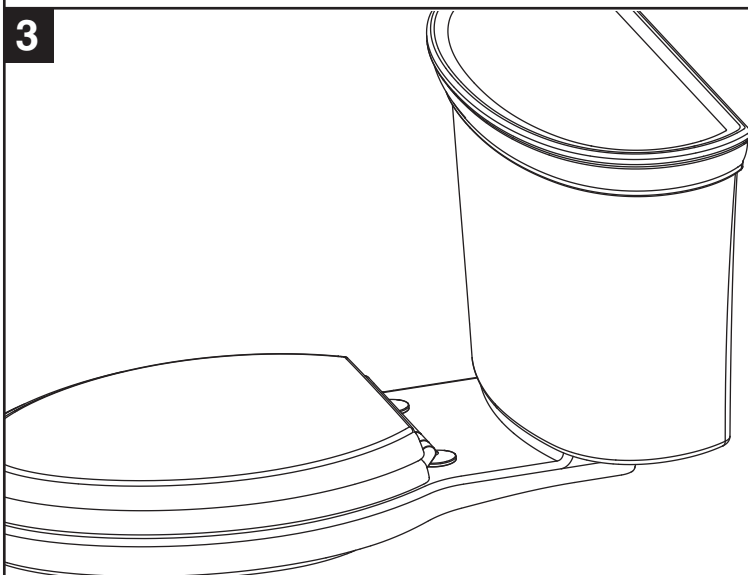
Align holes on hinge and hinge gasket.
Press fit to secure in place.

2



Screw threaded rod into hinge.

3



Align seat on bowl by inserting the threaded rods into the holes on the bowl.

4

Secure seat in place by
tightening plastic nuts
onto threaded rods.

