

INSTALLATION INSTRUCTIONS

AXIS™ SHOWER WALL

MODEL: 3636CW

USE SHOWER WALL 3636CW WITH SHOWER BASE 3232S-ST3 or 3636A-ST3

*American
Standard*

Visit www.americanstandard.com for coordinating products.

Thank you for selecting American Standard – the benchmark of fine quality for over 100 years. To ensure this product is installed properly, please read these instructions carefully before you begin. (Certain installations may require professional help.) Also be sure your installation conforms to local codes.

BEFORE YOU BEGIN....

Local building codes vary by location. Observe all local plumbing and building codes.

Unpack your new shower walls and inspect them carefully for damage. Verify that the walls are the correct size for your installation. Refer to American Standard roughing-in information for specific dimensions for each model.

NOTE: Take extra care in handling the front surfaces of the walls. Use only non-abrasive cloths to avoid scratching.

REQUIRED TOOLS AND MATERIALS

TOOLS:

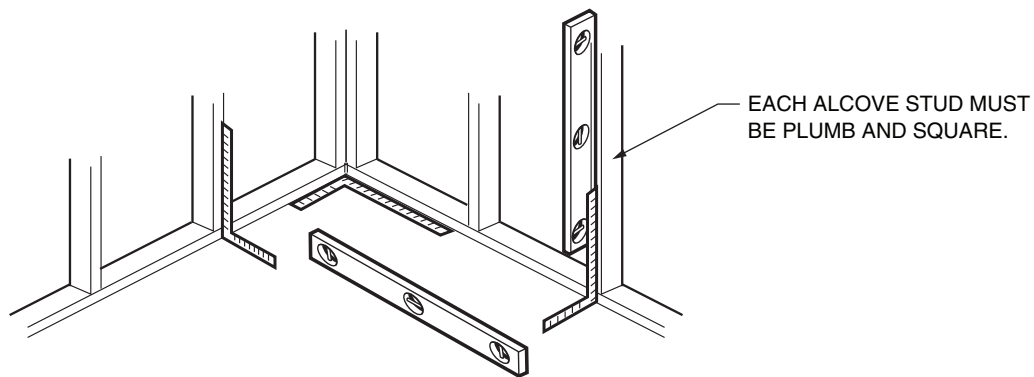
Notched Trowel
Pencil
Tape Measure
Drill
Caulking Gun
Hole Saw or
Level
Sabre Saw
Square

MATERIALS:

Acrylic/Latex or Acrylic/Silicone Sealant
Galvanized (or corrosion resistant) flat head screws 3/4" minimum length
Tub Surround Adhesive

PREPARATION: Must be installed over **SHEETROCK/GREENBOARD** or **CEMENT/CONCRETE**.

Illustration 1



A) WALL SURFACE PREPARATION

Ensure wall surface is dry, smooth, and free of dust, soap scum, mold or other contaminants. Wipe wall surfaces with a damp cloth and allow to dry.

Wall surface must be dry before panels can be applied.

Ensure that alcove is plumb and square. (Illustration 1)

INSTALLATION over OLD TILE

Rough up glossy tile surfaces using belt sander with 60-grit sandpaper.

Surface must be dry, smooth and free of any dust or any other contaminants.

Wipe wall surfaces with a damp cloth and allow to dry.

B) ROUGH PLUMBING & FITTINGS MUST BE INSTALLED BEFORE WALLS

Turn off hot & cold water supplies.

Remove faucet handles, escutcheons, filler spouts and any other fixtures & fittings (e.g. towel bars, soap dishes, etc.).

Use hammer & chisel to remove objects cemented to walls.

Old ceramic tiles, if solidly adhered to walls, need not be removed.

Loose ceramic tiles must be removed and sub walls sanded smooth.

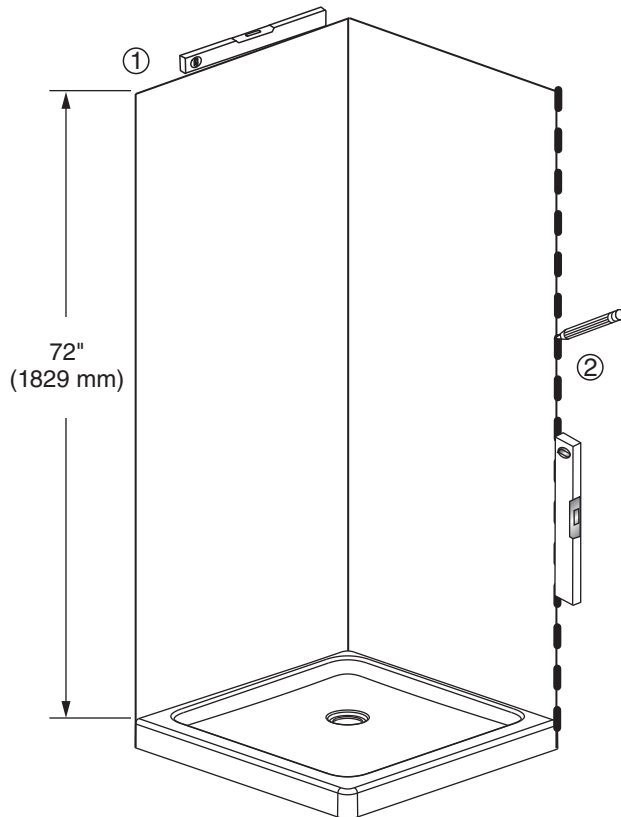
C) IF YOU PLAN TO INSTALL A SHOWER DOOR

Follow manufacturer's instructions and prepare stud wall accordingly.

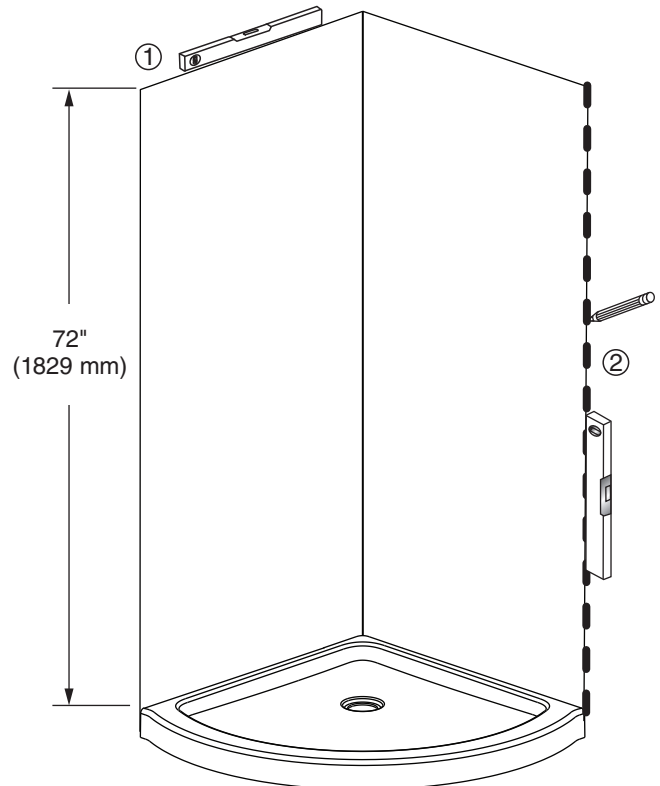
MARKING THE WALLS

- 1) Draw a level line 72" (1829mm) from the deck of the shower on the drywall as shown.
- 2) Use a level to mark vertical lines at the outside edge of the shower base on the drywall as shown. This will be the outer edge of the side panels.

**Installation for use with shower base
Model 3232S-ST3**



**Installation for use with shower base
Model 3636A-ST3**

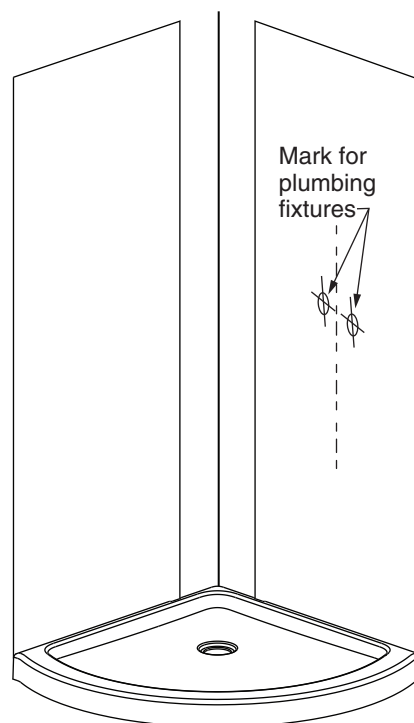
**IMPORTANT:**

Rough plumbing and fittings must be installed before walls.

2

DRY FITTING THE PANELS ON THE WALL

- 1) Starting with the two side panels, dry fit the panels on the walls using the marks made in Step 1. Use Painter's Tape to hold the panels in place.
- 2) Remove the corner panel and mark the inner edges of the side panels on the dry wall.



3

MARKING THE SIDE PANEL WITH THE PLUMBING

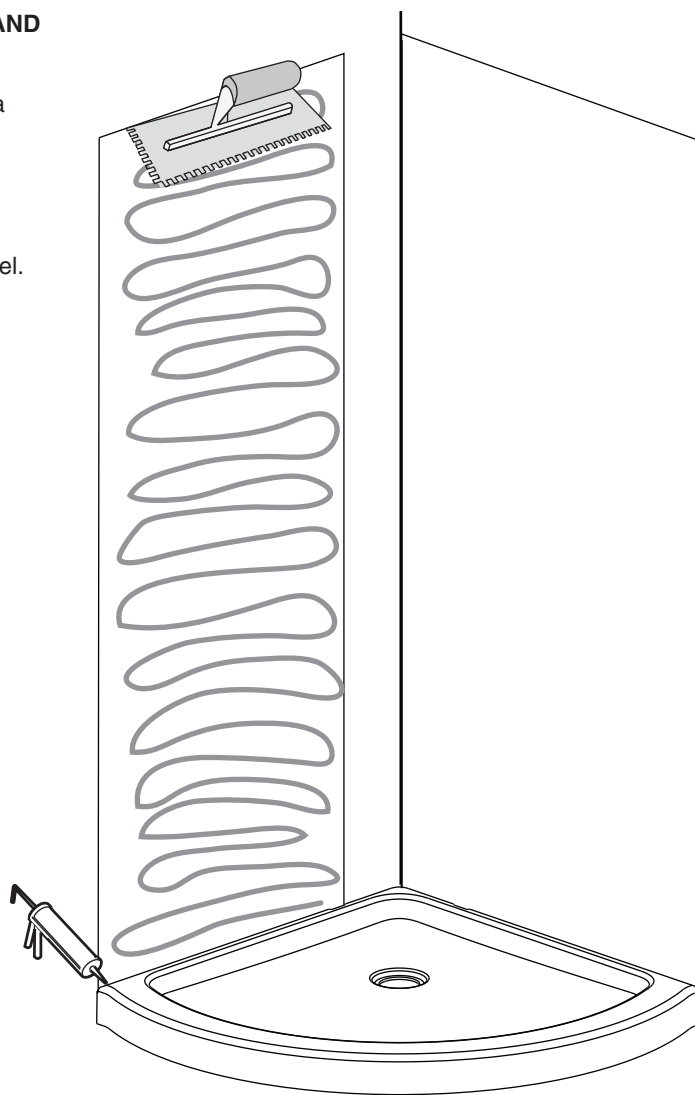
- 1) Measure the distance from the two lines to the centers of the shower head and valve.
- 2) Mark the locations of the shower head and valve on the panel that will have the plumbing installed.
- 3) Drill holes in the panel using holes saws that are large enough for the opening but small enough to be covered by the trim plates.

4

APPLYING TUB SURROUND ADHESIVE TO DRYWALL AND SEALANT TO SHOWER BASE

- 1) Apply tub surround adhesive to one side of the dry wall in a zig-zag pattern.
- 2) Use a notched trowel to spread the adhesive evenly on the wall. Be sure to stay within the marked lines.
- 3) Apply sealant to shower base where it will contact wall panel.

NOTE – DO ONLY ONE WALL AT A TIME.



5**INSTALLING THE SIDE PANELS ON THE WALLS**

- 1) Place the side panel against the adhesive on the drywall and press it so the entire surface contacts the adhesive.
- 2) Remove the panel for 30 seconds (or longer as recommended by manufacturer) to let the solvents in the adhesive escape and replace the panel.
- 3) Wipe the panel down with a damp rag while continuing to apply pressure to the panel to ensure it makes complete contact.

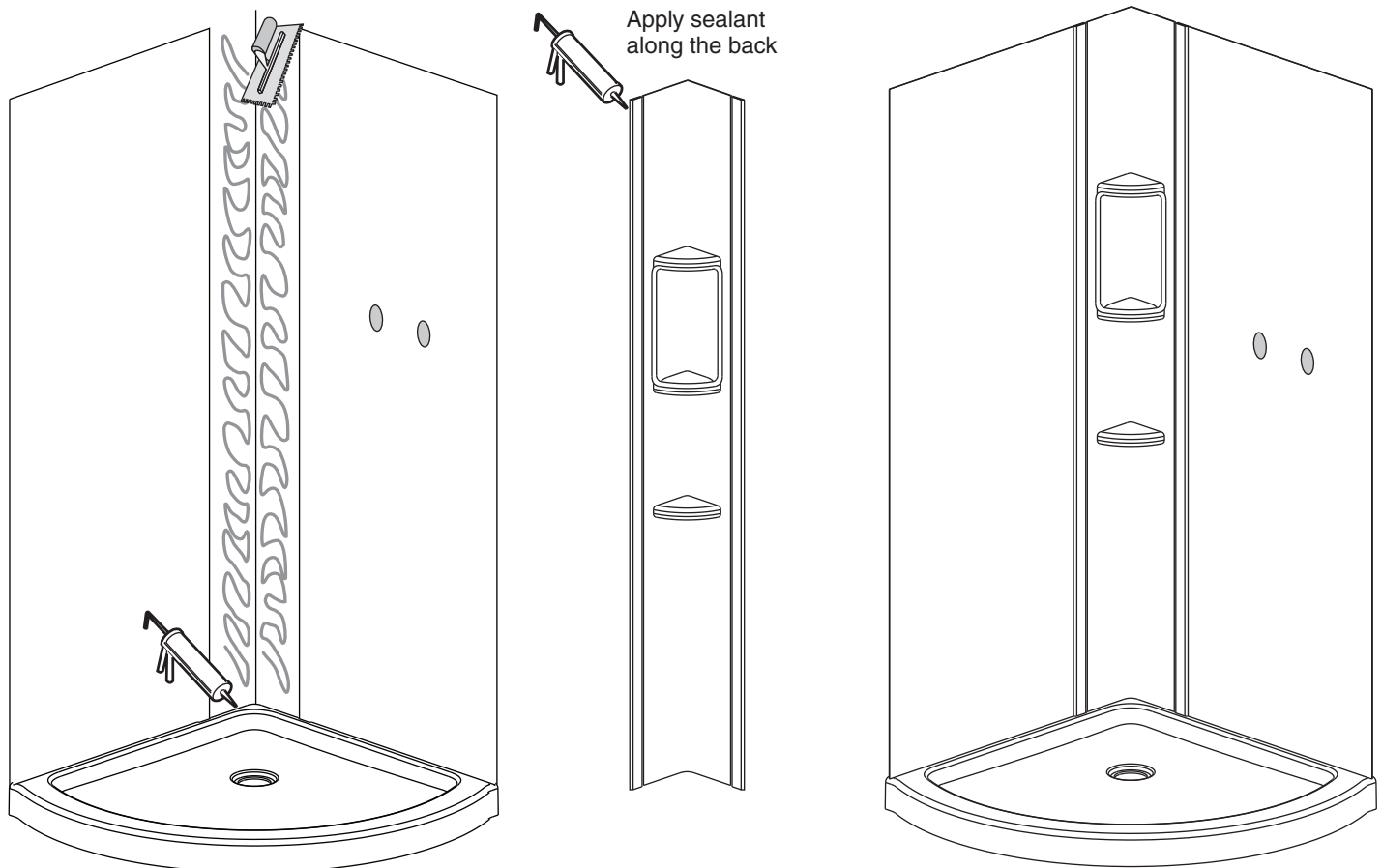
NOTE – WIPE ANY EXCESS ADHESIVE FROM THE PANEL WITH A DAMP RAG

- 1) Repeat Step 4 and above for the other side panel.

6**INSTALLING THE CORNER PANEL**

- 1) Place panel adhesive on the drywall between the two side panels.
- 2) Use a notched trowel to spread the adhesive evenly on the wall.
- 3) Apply a bead of sealant along the back edges of the corner panel so adhere to the side panels.
- 4) Apply sealant to shower base where it will contact wall panel.
- 5) Place the corner panel against the adhesive on the drywall and press it into the corner of the wall so the entire surface contacts the adhesive.
- 6) Remove the panel for 30 seconds (or longer as recommended by the manufacturer) to let the solvents in the adhesive escape and replace the panel.
- 7) Wipe the panel down with a damp rag while continuing to apply pressure to the panel to ensure it makes complete contact.

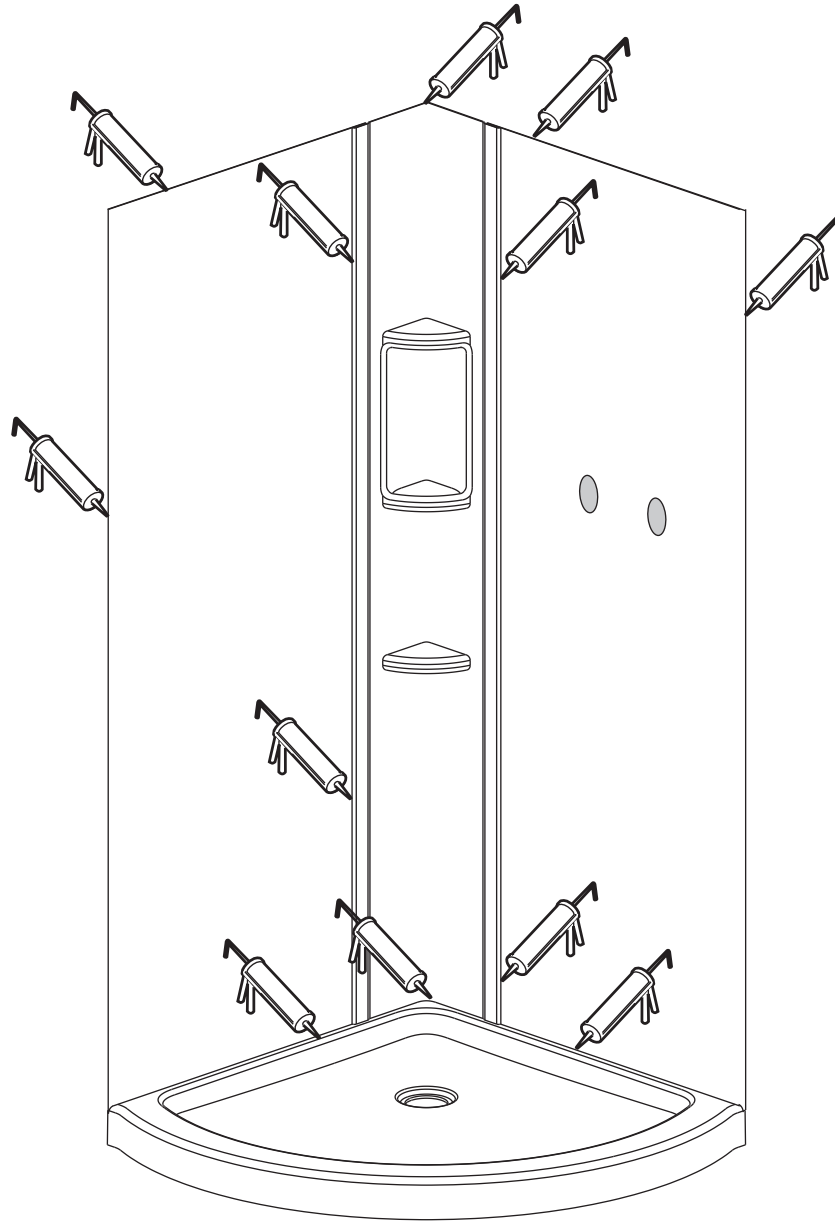
NOTE – WIPE ANY EXCESS ADHESIVE FROM THE PANEL WITH A DAMP RAG



APPLYING SEALANT AND INSTALLING SHOWER HANDLE & SHOWER HEAD

- 1) Allow 24 hours for the adhesive to dry before applying the sealant as shown.
- 2) Install the shower handle and shower head per the manufacturer's instructions. Be sure to apply sealant to all trim plates.

Note – allow 24 hours for the sealant to dry before use.



Install the shower door or shower curtain rod according to the manufacturer's instructions.

POST INSTALLATION CLEAN-UP

Remove all construction debris. Tile grout can be removed with a wooden popsicle stick or tongue depressor. Do not use wire brushes or any other metal implement on surface.

Post installation clean-up generally can be completed using warm water and liquid dishwashing detergent. Stubborn dirt or stains may be removed using granular Spic and Span® mixed with water.

Painter's naphtha can be used to remove excess adhesives and/or wet oil-base paint.

AFTERCARE and CLEANING

! WARNING: Cleaning products with labels that say "not suitable for use with ABS, acrylic or polystyrene" **SHOULD NOT BE USED.** Read all labels carefully.

- Excessively hot water may cause surface damage.
- **HARSH CHEMICALS SHOULD NEVER BE USED ON SHOWER WALL SURFACE.** Clean after use with a mild liquid household detergent cleaner. Do not use Lestoil, Lysol Disinfectant (spray or concentrate), or Lysol Basin, Tub and Tile Cleaner, Windex, Mr. Clean, Dow Disinfectant Bathroom Cleaner, or cleaning products in aerosol cans.
- Do not use wire brushes, knives or sharp objects to remove stains, cigarette tar deposits, or other surface blemishes.
- Abrasive cleaners or powders must not be used, since they will dull the surface. If the glossy surface loses its sheen, dulled areas or light scratches can be restored by rubbing with a white "automotive type" polishing compound and waxing with a "liquid wax."
- **Do not wax areas where you walk or stand.**
- Do not allow nail polish remover, acetone, dry cleaning fluid, paint remover or other solvents to come into contact with the surface.
- Clean the surrounding surface immediately after using caustic drain cleaners.
- Burning cigarettes will damage the surface.
- Should damage to the fixture occur, repairs can be made quickly and easily. Your distributor or builder can provide details.

AS America, Inc. Limited Lifetime Warranty for Axis™ Walls

AS America, Inc. ("American Standard") warrants to the original consumer purchaser that it will, at its option, repair or replace this these walls or any of its parts that are found by American Standard, in its sole judgment, to be defective under normal residential use and maintenance so long as it is owned by the original consumer purchaser.

To activate this limited warranty, the purchaser must go online to our website at www.americanstandard-us.com/warranty to register their bath walls within thirty (30) days of purchase.

In no event will American Standard be liable for the cost of repair or replacement of any installation materials including but not limited to tiles, marble etc.

This limited warranty DOES NOT COVER the following:

1. Defects or damages arising from shipping, installation, alterations, accidents, abuse, misuse, lack of proper maintenance and cleaning as directed in the owner's manual and use of other than genuine American Standard replacement parts, in all cases whether caused by a plumbing contractor, service company, the owner or any other person.
2. Deterioration through normal wear and tear and the expense of normal maintenance.
3. Commercial application.
4. Options and accessories. American Standard's limited warranty on these items is one year for parts only and excludes labor. This one year limited warranty covers accessories manufactured by American Standard (e.g. aprons, drains, grab bars, heaters, trim kits) against defects of material or workmanship. Warranty coverage begins on the date the accessory was originally purchased by the owner.
5. Postage or shipping costs for returning products for repairs or replacement under this limited warranty and labor or other costs incurred in connection with product removal or installation under this limited warranty.
6. ANY LIABILITY FOR CONSEQUENTIAL OR INCIDENTAL DAMAGES, ALL OF WHICH ARE HEREBY EXPRESSLY DISCLAIMED, OR THE EXTENSION BEYOND THE DURATION OF THIS LIMITED WARRANTY OF ANY IMPLIED WARRANTIES, INCLUDING THOSE OF MERCHANTABILITY OR FITNESS FOR AN INTENDED PURPOSE. (Some jurisdictions do not allow limitations on how long an implied warranty lasts, or the exclusion or limitation of incidental or consequential damages, so these limitations and exclusions may not apply to you.)
7. Responsibility for compliance with local code requirements. (Since local code requirements vary greatly distributors, retailers, dealers, installation contractors and users of plumbing products should determine whether there are any code restrictions on the installation or use of a specific product.)

This warranty gives you specific legal rights. You may have other legal rights that vary from state to state. For service under this warranty, you should contact the following:

In the United States:

American Standard Brands
P.O. Box 6820
Piscataway, New Jersey 08855
Attention: Director of Consumer Affairs

For residents of the United States, warranty information may also be obtained by calling the following toll free number: (800) 442-1902
www.americanstandard.com

In Canada:

AS Canada ULC
5900 Avebury Rd.
Mississauga, Ontario
Canada L5R 3M3

Toll Free: (800) 387-0369
www.americanstandard.ca

In Mexico:

American Standard B&K Mexico
S. de R.L. de C.V.
Via Morelos #330
Col. Santa Clara
Ecatepec 55540 Edo. Mexico
Toll Free: 01-800-839-1200
www.americanstandard.com.mx