

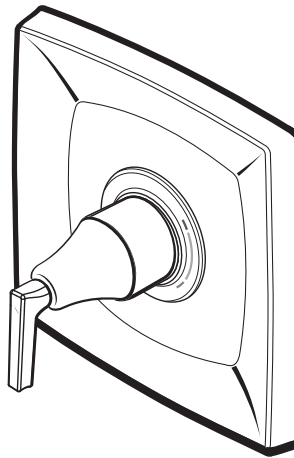
INSTALLATION INSTRUCTIONS

Keefe® Pressure Balance Shower Valve Trim Kit

Models D35104500, D35104500RB

To be used with D35000500.191
Pressure Balanced Shower Valve

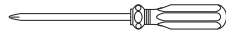
Thank you for selecting DXV. To ensure that your installation proceeds smoothly, please read these instructions carefully before you begin.



DXV

RECOMMENDED TOOLS AND MATERIALS

Most of the procedures require the use of common tools and materials, which are available from hardware and plumbing supply stores. It is essential that the tools and materials be on hand before work is begun.



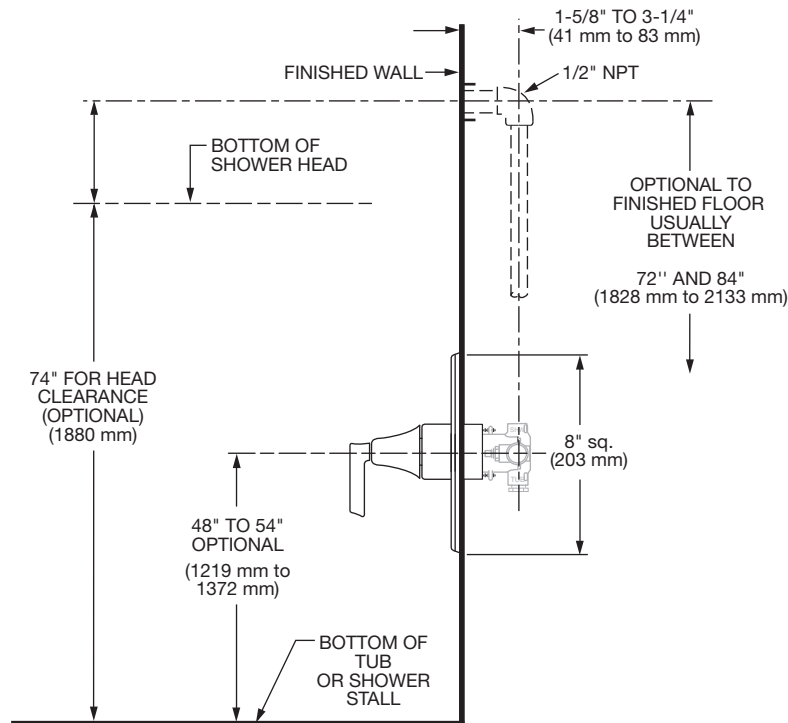
Phillips Screwdriver



Flat Blade Screwdriver

ROUGHING-IN DIMENSIONS:

- For reference



In the United States:

DXV
One Centennial Avenue
Piscataway, New Jersey 08855
Attention: Director of Customer Care

For residents of the United States, warranty information may also be obtained by calling the following toll free number: (800) 227-2734
www.DXV.com

In Canada:

DXV
5900 Avebury Road
Mississauga, Ontario
L5R 3M3
Canada

Toll Free: 1-800-387-0369
Local: 905-306-1093
Fax: 1-800-395-1498
www.DXV.ca

In Mexico:

DXV
Via Morelos 330
Col. Santa Clara Coatitla
Ecatepec, Estado de México 55540

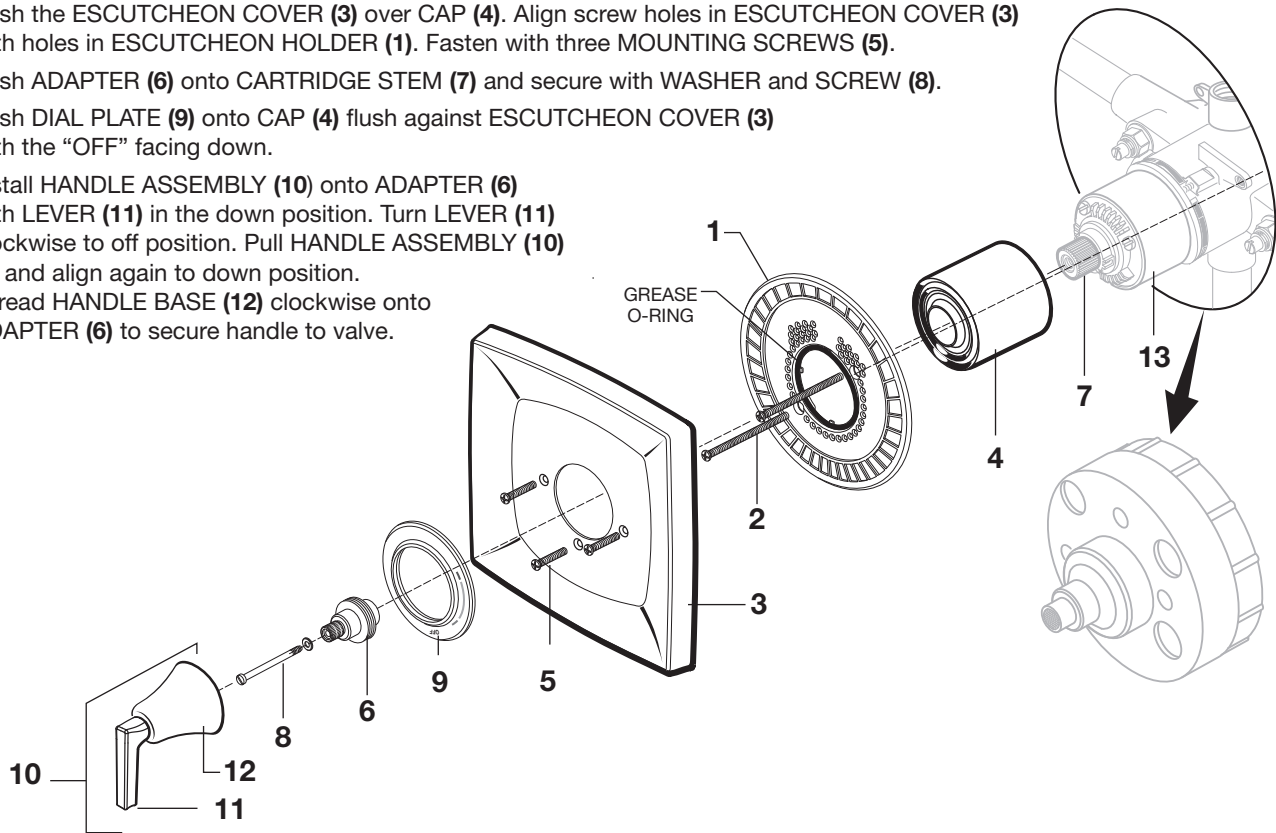
Toll Free: 01-800-8391200
www.DXV.mx

SAVE FOR FUTURE USE

1 INSTALL TRIM

CAUTION Protect finish on SHOWER ARM and SHOWER HEAD when installing.

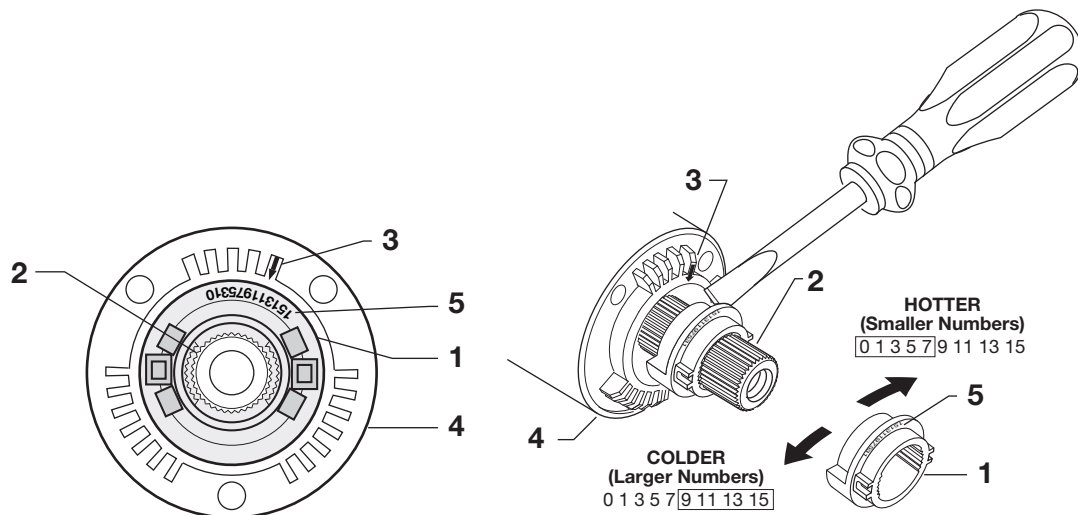
- Push CAP (4) over VALVE CARTRIDGE (13) until seated against stop.
- Mount ESCUTCHEON HOLDER (1) with gasket to fitting using two LONG SCREWS (2). Push the ESCUTCHEON COVER (3) over CAP (4). Align screw holes in ESCUTCHEON COVER (3) with holes in ESCUTCHEON HOLDER (1). Fasten with three MOUNTING SCREWS (5).
- Push ADAPTER (6) onto CARTRIDGE STEM (7) and secure with WASHER and SCREW (8).
- Push DIAL PLATE (9) onto CAP (4) flush against ESCUTCHEON COVER (3) with the "OFF" facing down.
- Install HANDLE ASSEMBLY (10) onto ADAPTER (6) with LEVER (11) in the down position. Turn LEVER (11) clockwise to off position. Pull HANDLE ASSEMBLY (10) off and align again to down position. Thread HANDLE BASE (12) clockwise onto ADAPTER (6) to secure handle to valve.



2 ADJUST HOT LIMIT STOP

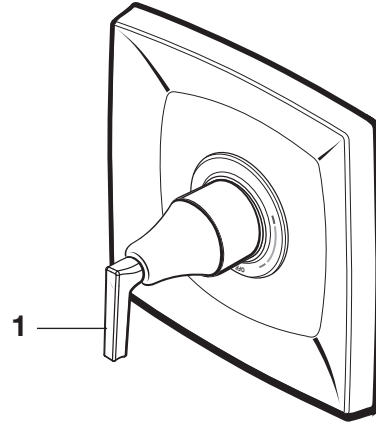
By restricting HANDLE rotation and limiting the amount of hot water allowed to mix with the cold, the HOT LIMIT SAFETY STOP (1) reduces risk of accidental scalding. To set the maximum hot water temperature of your faucet, all you need to do is adjust the setting on the HOT LIMIT SAFETY STOP (1).

- Turn CARTRIDGE STEM (2) to the OFF position (coldest setting) before making adjustment to HOT LIMIT SAFETY STOP (1). Use a flat blade screwdriver to pry free the HOT LIMIT SAFETY STOP (1). Pull forward and rotate counterclockwise one number to limit hot water temperature. Use ARROW (3) on CARTRIDGE (4) and NUMBERS (5) on HOT LIMIT SAFETY STOP (1) for indication.



3 TEST INSTALLED FITTING

- Turn VALVE “off”.
- With HANDLE (1) in “off” position, turn on water supplies and check all connections for leaks.
- Operate HANDLE and flush water lines thoroughly. Check the function for proper operation.



DXV

Replace the “YYY” with appropriate finish code

POLISHED CHROME	100
BRUSHED NICKEL	144

Keefe® Pressure Balanced Shower Valve Trim Kit

MODELS NUMBERS

D35104500
D35104500RB

