

# INSTALLATION INSTRUCTIONS

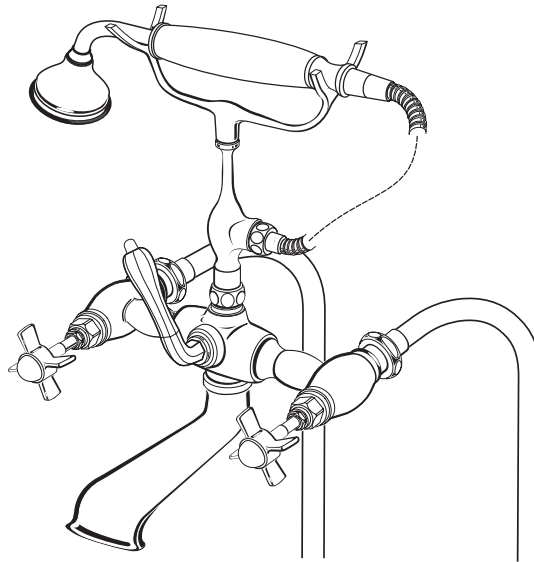


## Traditional Floor Mount Tub Filler

**Cross Handle  
Model D3510795C**

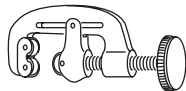
**Lever Handle  
Model D3510796C**

*Thank you for selecting DXV. To ensure that your installation proceeds smoothly, please read these instructions carefully before you begin.*



### RECOMMENDED TOOLS AND MATERIALS

Most of the procedures require the use of common tools and materials, which are available from hardware and plumbing supply stores. It is essential that the tools and materials be on hand before work has begun.



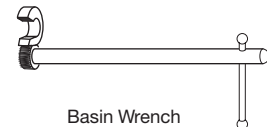
Pipe cutter



Channel Locks



Adjustable Wrench



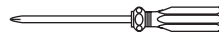
Basin Wrench



Plumbers' Putty or Caulking



Regular Screwdriver



Phillips Screwdriver



Hex Wrench  
(Supplied)

#### In the United States:

DXV  
One Centennial Avenue  
Piscataway, New Jersey 08855  
Attention: Director of Customer Care

For residents of the United States, warranty information may also be obtained by calling the following toll free number: (800) 227-2734  
[www.DXV.com](http://www.DXV.com)

#### In Canada:

DXV  
5900 Avebury Road  
Mississauga, Ontario  
L5R 3M3  
Canada

Toll Free: 1-800-387-0369  
Local: 905-306-1093  
Fax: 1-800-395-1498  
[www.DXV.ca](http://www.DXV.ca)

#### In Mexico:

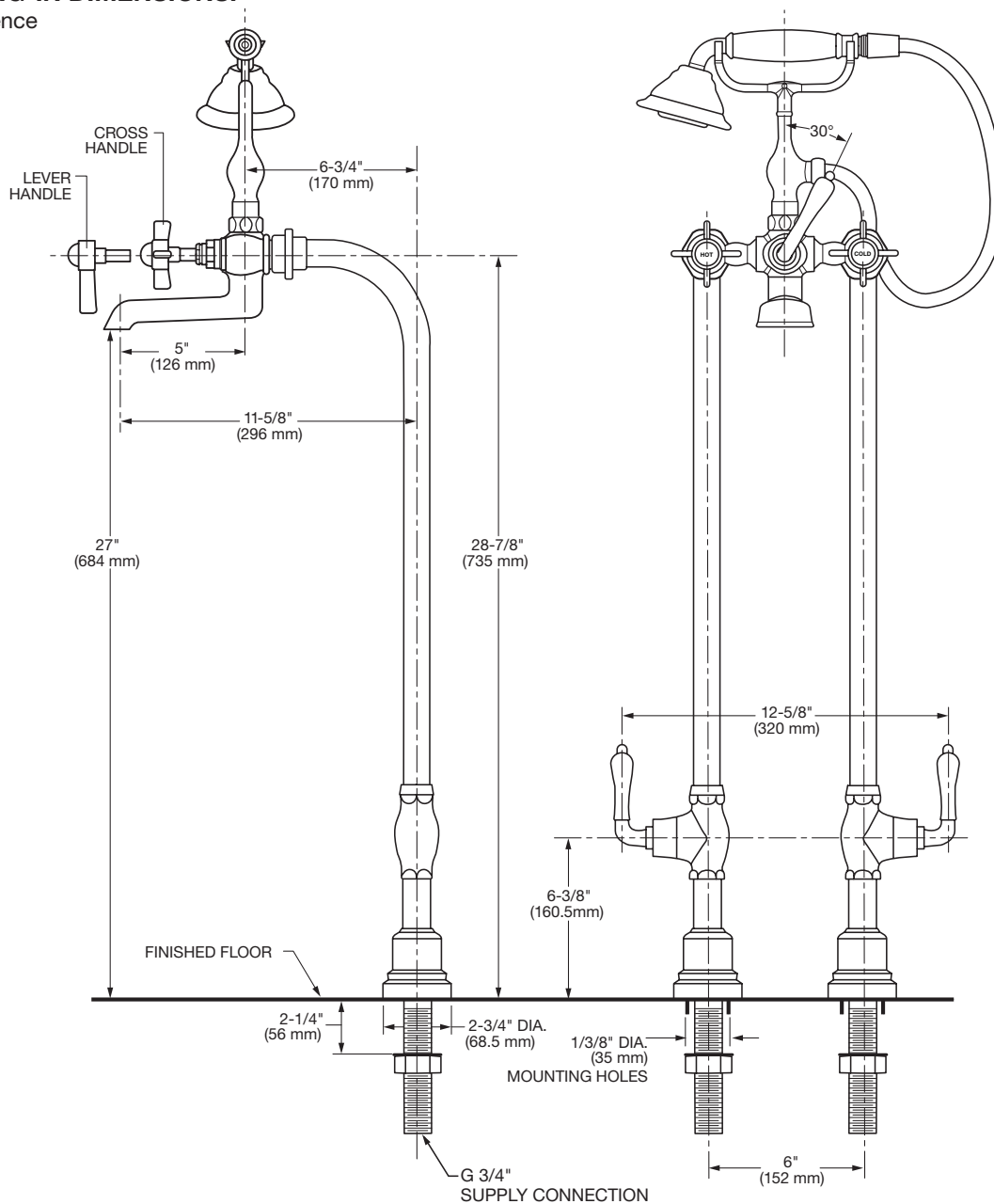
DXV  
Via Morelos 330  
Col. Santa Clara Coatitla  
Ecatepec, Estado de México 55540

Toll Free: 01-800-8391200  
[www.DXV.mx](http://www.DXV.mx)

SAVE FOR FUTURE USE

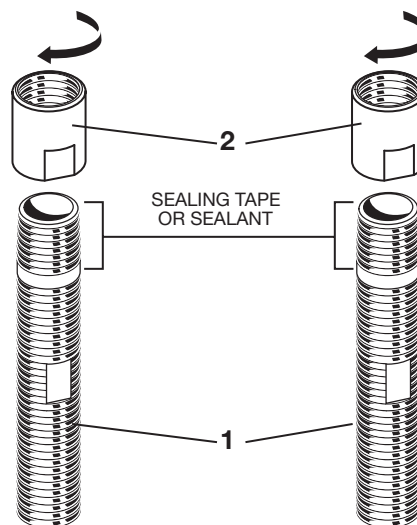
## ROUGHING-IN DIMENSIONS:

- For reference



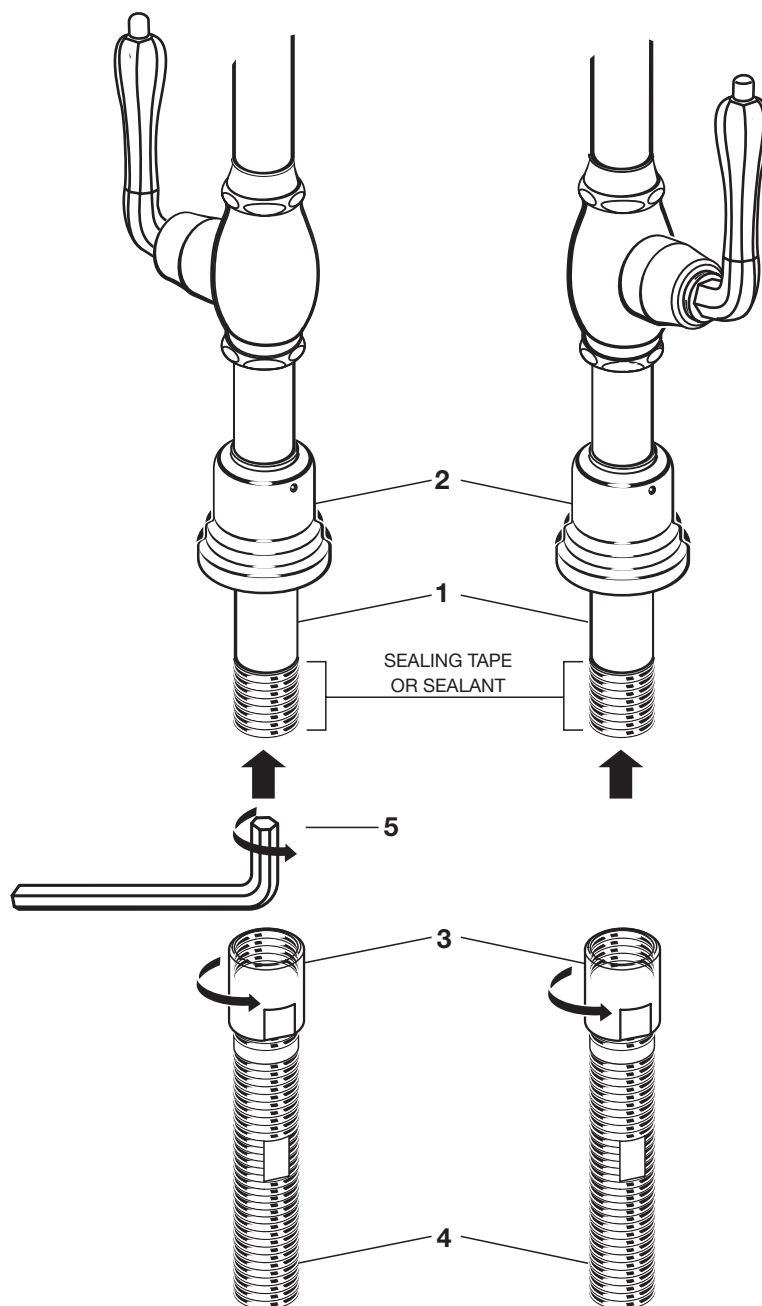
## 1 ASSEMBLE MOUNTING STUDS

- Apply sealing tape or sealant to threads of MOUNTING STUDS (1) as shown in illustration.
- Thread STUD ADAPTERS (2) onto MOUNTING STUDS (1). Tighten fully with wrenches.



## 2 ASSEMBLE FLOOR ESCUTCHEONS AND RISER PIPING

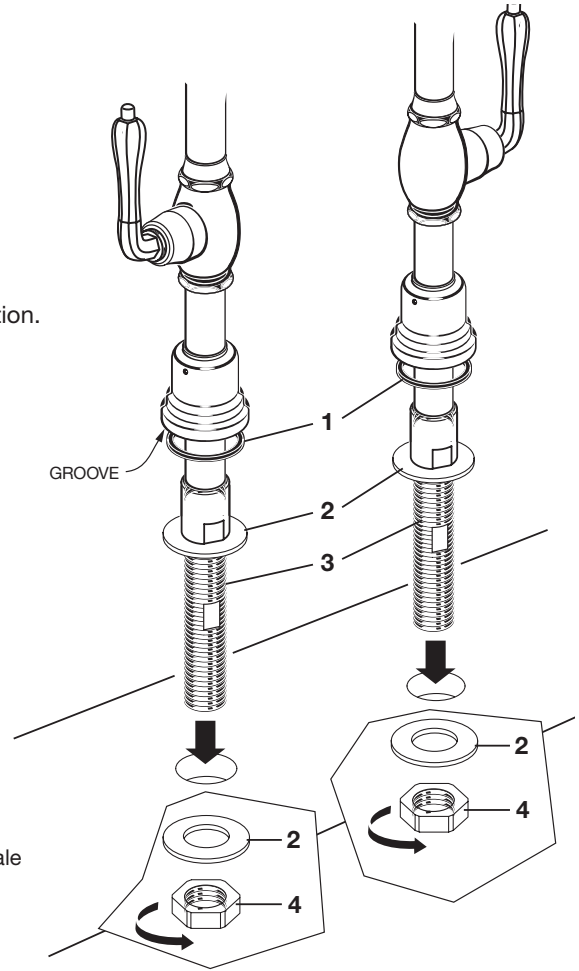
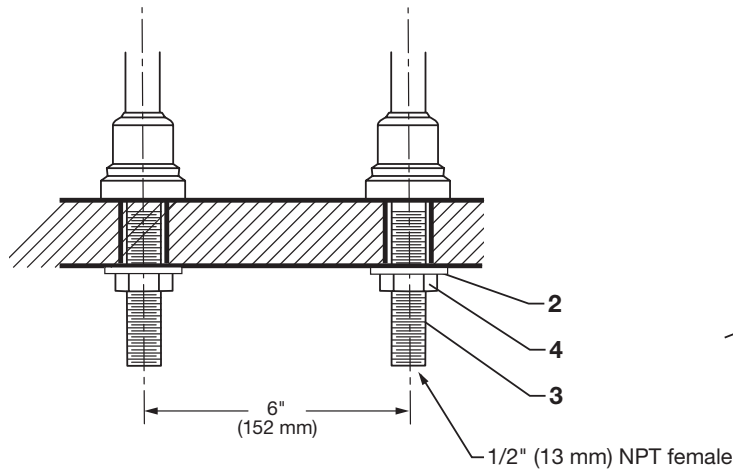
- Apply sealing tape or sealant to threads of RISER PIPES (1).
- Slide FLOOR ESCUTCHEONS (2) onto RISER PIPES (1).
- With wrenches connect the STUD ADAPTERS (3) to RISER PIPES (1).
- Tighten MOUNTING STUDS (4) to RISER PIPES (1) with HEX WRENCH (5) supplied.



### 3 INSTALL RISER SUPPLY PIPING

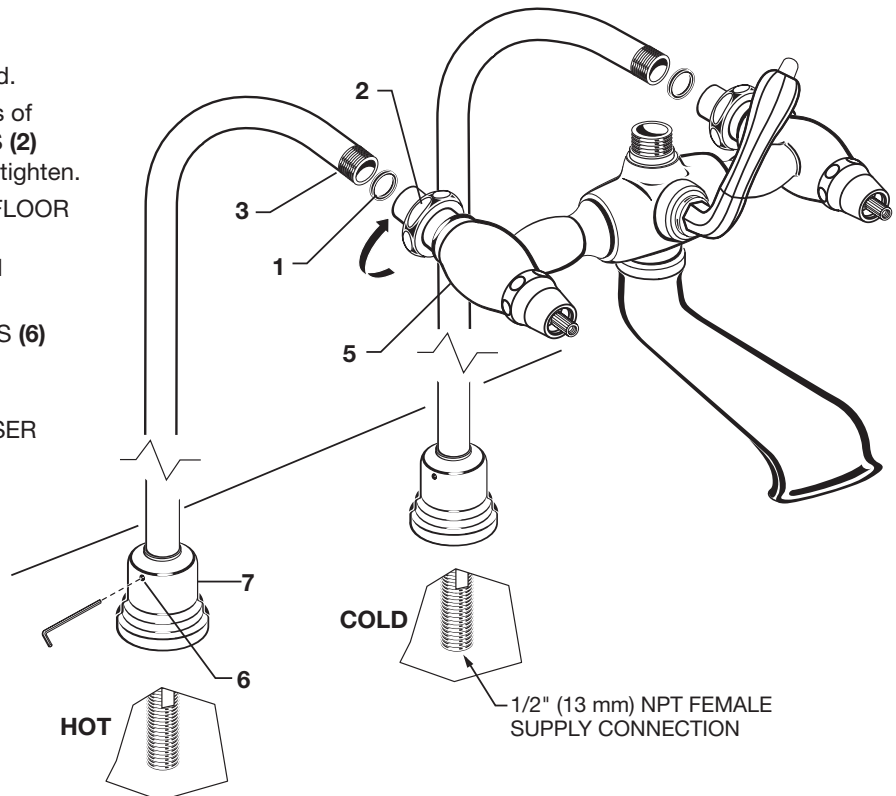
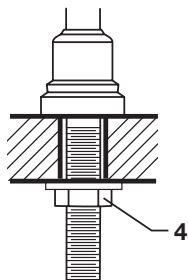
- Install ESCUTCHEON SEALS (1) into groove in escutcheon base.
- Slide BRASS WASHERS (2) onto RISER PIPES (3).
- Install RISER SUPPLY PIPES (3) into mounting holes in floor.  
From underside of floor install BRASS WASHERS (2) and LOCK NUTS (4) onto RISER SUPPLY PIPES (3).  
Do not tighten LOCK NUTS (4) fully.

**NOTE:** RISER SUPPLY PIPES (3) are 1/2" (13 mm) NPT female connection.



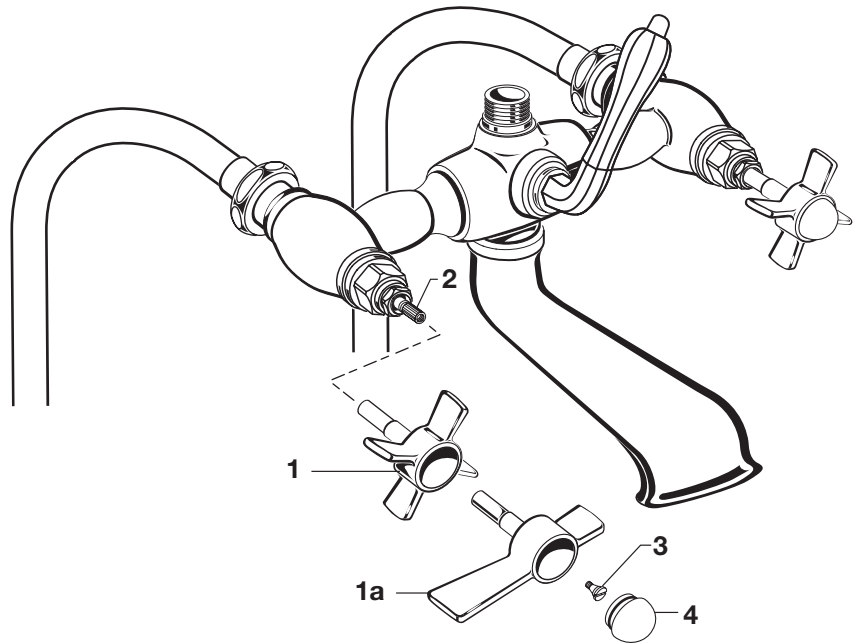
### 4 INSTALL BATH FILLER

- Install two SEAL WASHERS (1) into COUPLINGS (2) if not already installed.
- Align FLOOR SUPPLIES (3) with inlets of COUPLINGS (2). Thread COUPLINGS (2) to FLOOR SUPPLIES (3). Do not fully tighten.
- When alignment of BATH FILLER and FLOOR SUPPLIES are complete, fully tighten MOUNTING NUTS (4) below floor and COUPLINGS (2) on BATH FILLER (5).
- Tighten ESCUTCHEON SET SCREWS (6) with Hex Wrench supplied to secure ESCUTCHEON (7).
- Connect Hot and Cold supplies to RISER SUPPLY PIPES (3). Connections are 1/2" (13 mm) NPT female.



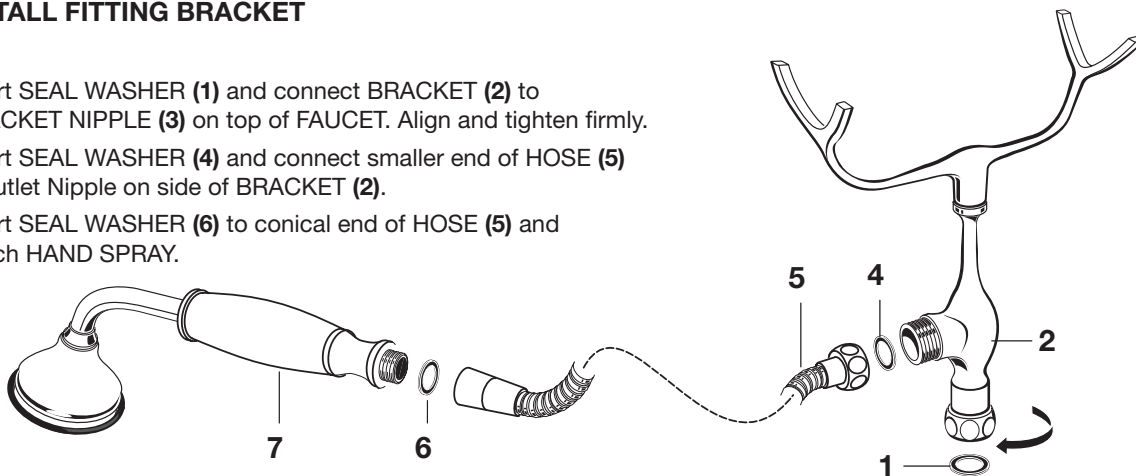
## 5 INSTALL HANDLES IF NOT INSTALLED

- Turn VALVE to OFF position.
- Push CROSS HANDLE (1) or LEVER HANDLE (1a) onto VALVE STEM (2). Check alignment if not satisfactory align.
- Insert HANDLE SCREW (3) and tighten.
- Install INDEX BUTTON (4).



## 6 INSTALL FITTING BRACKET

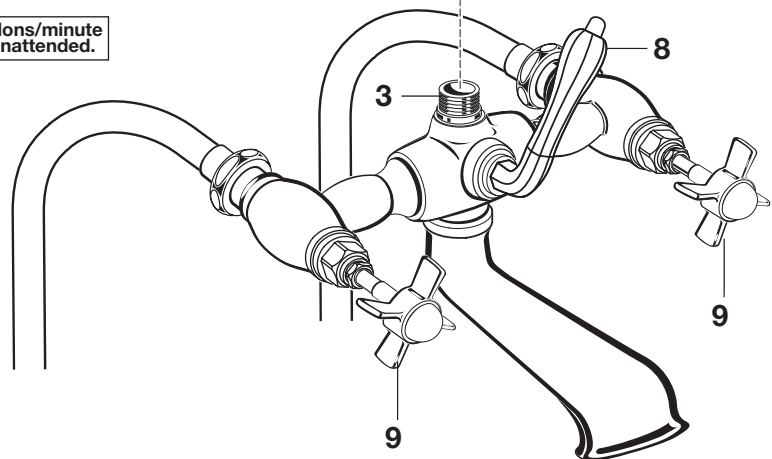
- Insert SEAL WASHER (1) and connect BRACKET (2) to BRACKET NIPPLE (3) on top of FAUCET. Align and tighten firmly.
- Insert SEAL WASHER (4) and connect smaller end of HOSE (5) to outlet Nipple on side of BRACKET (2).
- Insert SEAL WASHER (6) to conical end of HOSE (5) and attach HAND SPRAY.



## 6a TEST INSTALLED FAUCET

**CAUTION** The flow rate of this Tub Filler exceeds 20 gallons/minute at higher water pressure. Do not fill bathtub unattended.

- Turn VALVES to “off” position.
- With handles in “off” position, turn on water supplies and check all connections for leaks.
- Lift HAND SHOWER (7) from the holder and remove it from HOSE (5). Direct spray into tub. Turn DIVERter KNOB (8) and check HOSE (5) connections for leaks.
- Operate HANDLES (9) on to off, hot and cold to flush water lines thoroughly.
- Turn DIVERter KNOB (8) in and thread HAND SHOWER (7) onto HOSE (5).



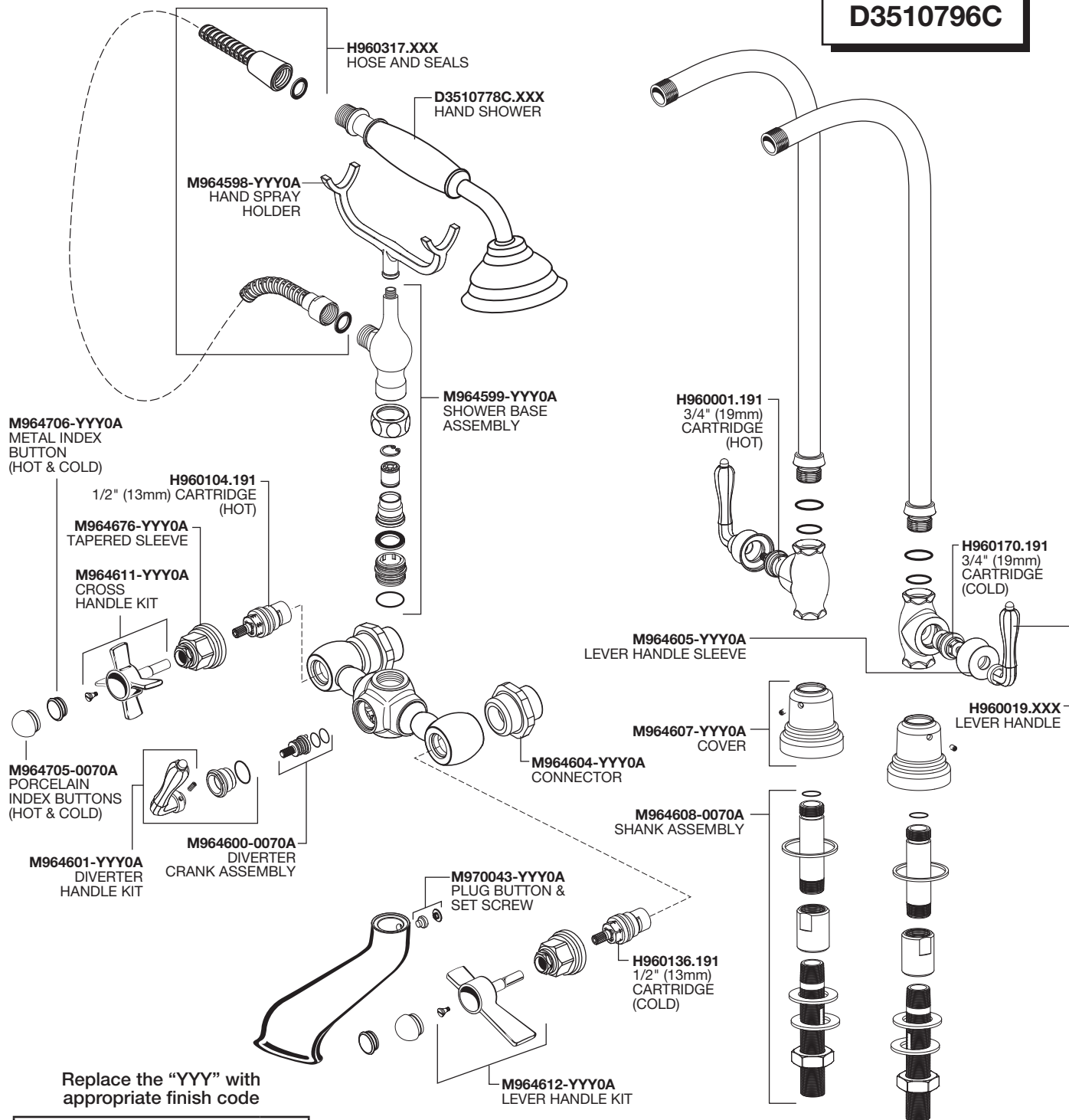


# Traditional Foot Mount Tub Filler

MODEL NUMBERS

Cross Handle  
**D3510795C**

Lever Handle  
**D3510796C**



Replace the "YYY" with  
appropriate finish code

POLISHED CHROME	100
BRUSHED NICKEL	144
PLATINUM NICKEL	150
CARBON BRONZE	110

PART OF **LIXIL**