

THE BEST BATH OR SHOWER EXPERIENCE? THE ONE NOBODY INTERRUPTS.

Thank you for buying an American Standard bath or shower product.

We're so grateful you did, and you will be too. Not just while you're waking up each morning, but also every time a dirty gardener, sweaty soccer player, or muddy dog gets cleaned up. How do we know? Just like you, we've lived with that same beautiful chaos called life for almost 150 years. We believe that while every home should appreciate in value, we never forget the sentimental value that grows from enjoying life in the heart of home—your kitchen and bath. That's why we love your stories and ideas; they help us innovate with products that make your life easier.

Or, visit **americanstandard-us.com/bathroom/bathtub-and-shower-doors** to watch video, view/download installation manuals or learn more about your product.

Have a question or need help on install?

For questions or help on installation call us at **800-442-1902**.

For a copy of our warranty in additional languages,
please visit Americanstandard.com

American Standard

OWNERS MANUAL

Elevate® Alcove Shower Doors

AM00837400 / AM00838400 / AM00839400

INSTALLATION INSTRUCTIONS

Thank you for selecting American Standard – the benchmark of fine quality for over 150 years. To ensure this product is installed properly, please read these instructions carefully before you begin. Certain installations may require professional help. Also be sure your installation conforms to local codes.

INSTALLATION PREPARATION

- Please unpack carefully and identify all parts needed for installation by using the Box Contents page as a reference. Inspect the product and report any damages or missing parts immediately to customer care by calling 800-442-1902. Follow the prompts for consumer/shower doors.
- These Elevate shower doors were developed to be installed with the Elevate shower base and Elevate shower walls. If you are using a different base and walls, you may need additional hardware and tools to complete the installation.
- The Elevate shower door dimensions are nominal and meant for a standard 60" (1524 mm) and 48" (1219 mm) alcove. Alcove sizes may vary based on stud and wall material thickness. Please double check your measurements prior to starting your install.
- Handle the glass panels carefully and protect the edges. Unequal pressure applied during installation can cause cracking or breakage, and the sharp corners on the glass panels can cause damage to the wall or floor materials.
- Ensure adequate wall support is provided to area where shower door is to be installed.
- Shower base and wall material must be installed prior to the door installation.
- Wear protective equipment during installation to avoid injury.
- Please keep these instructions for after care and customer service details.

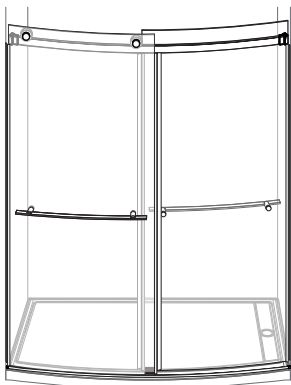
⚠ WARNING: PRODUCT IS HEAVY AND REQUIRES TWO PEOPLE FOR INSTALLATION.

⚠ WARNING: TEMPERED GLASS CANNOT BE DRILLED, CUT OR MODIFIED.

Image shown may vary from product purchased.

American Standard

INSIDE THE BOX



48" or 60" Curved Shower Door



60" Curved Tub Door

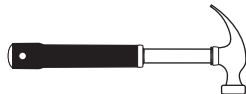
RECOMMENDED TOOLS AND MATERIALS

Installation steps will indicate which tools should be used with associated letter



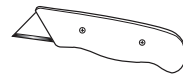
Level

A



Hammer

B



Utility Knife

C



Adjustable Wrench

D



Painter's
Masking Tape

E



Phillips
Screwdriver

F



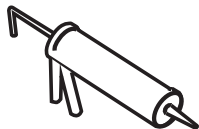
Regular
Screwdriver

G



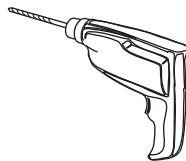
Safety
Equipment

H



Caulking Gun

I



Drill

J



1/4" (6 mm) & 1/8" (3.2 mm)
Drill Bits #2 Square Drive Bit

K



Tape
Measure

L



2.5 mm Allen Key

M



Pencil

N



BEFORE YOU BEGIN

Inspect your product thoroughly before installing. Take extra care in handling surfaces of the bath and use only non-abrasive cloths to avoid scratching. Observe all local plumbing and building codes.

American Standard

BOX CONTENTS

1x Installation Instruction

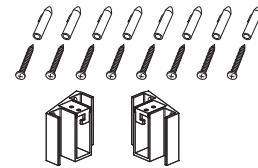


[1] 8x Wall Anchors

[2] 8x Screws ST4x35

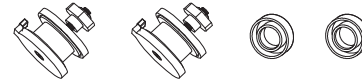
[3] 1x Wall Bracket (Left)

[4] 1x Wall Bracket (Right)



[5] 2x Exterior Rollers

[6] 2x Exterior Roller Caps



[7] 1x Wrench

[8] 1x 2.5 mm Allen Key



[9] 2x Interior Rollers

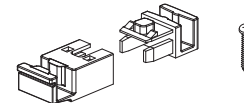
[10] 2x Interior Roller Caps



[11] 1x Bottom Guide A

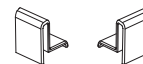
[12] 1x Bottom Guide B

[13] 1x Screw ST4x25



[14] 1x End Cap (Left)

[15] 1x End Cap (Right)



[16] 1x Exterior Handle Set

[17] 1x Interior Handle Set



[18] 1x Top Rail



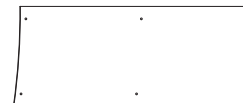
[19] 1x Aluminum Seal



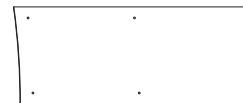
[20] 4x Side Gaskets



[21] 1x Exterior Door Panel



[22] 1x Interior Door Panel



[23] 4xGlass Catchers



[24] 1x Hole Location Template (Left)



[25] 1x Hole Location Template (Right)



[26] 4x Screws ST4x35 (Extra parts).



American Standard

INSTALLATION INSTRUCTIONS

IMPORTANT GENERAL INFORMATION

This unit is best installed by two people.

Cover drain with tape prior to installation to prevent the loss of small parts.

Unpack your unit carefully and inspect for freight damage. Lay out and identify all parts using Box Contents and Assembly Drawing as a reference. Before discarding the carton check to see that no small hardware parts have fallen to the bottom of the box. If any parts are damaged or missing refer to the description noted in the instructions when inquiring about replacements.

Handle the glass panels carefully and protect the edges. Although tempered glass is very resistant to breakage the glass can still break if unequal pressure is applied during installation and the sharp corners of the panel can damage tile and flooring surface.

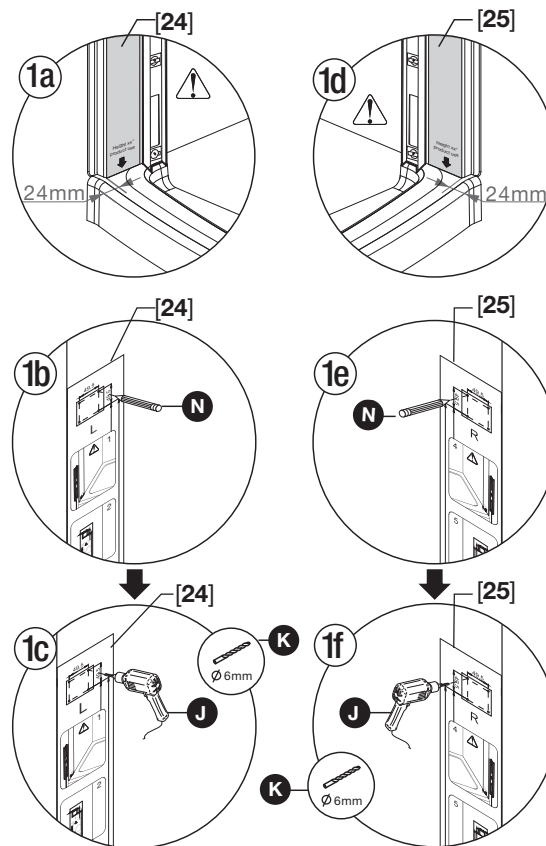
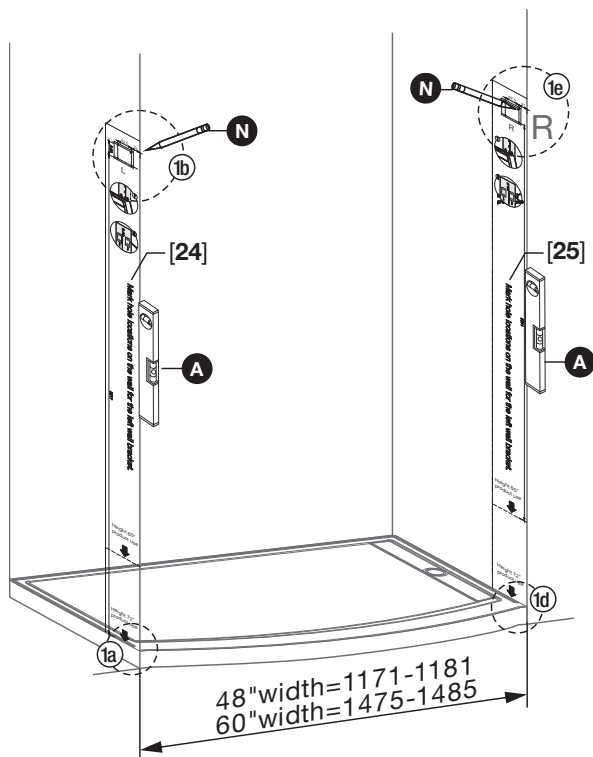
Be sure to wear safety glasses whenever drilling or cutting. When drilling holes in ceramic tile or marble use a center punch and hammer to carefully break the glazed surface. This will prevent skidding when drilling.

NOTE: TEMPERED GLASS CANNOT BE DRILLED, CUT OR MODIFIED.

1

PREPARING INSTALLATION OF WALL BRACKETS

- In this step, you'll need following parts: [24] x1, [25] x1
- In this step, you'll need the following tools: A, E, J, K, N



1a. Measure 24 mm from outside edge of tub or base. Place outside edge of LEFT template [24] at end of 24 mm mark on deck of tub or base, level and hold template in place using tape.

1b. Following template for screw hole locations, mark all 4 screw locations.

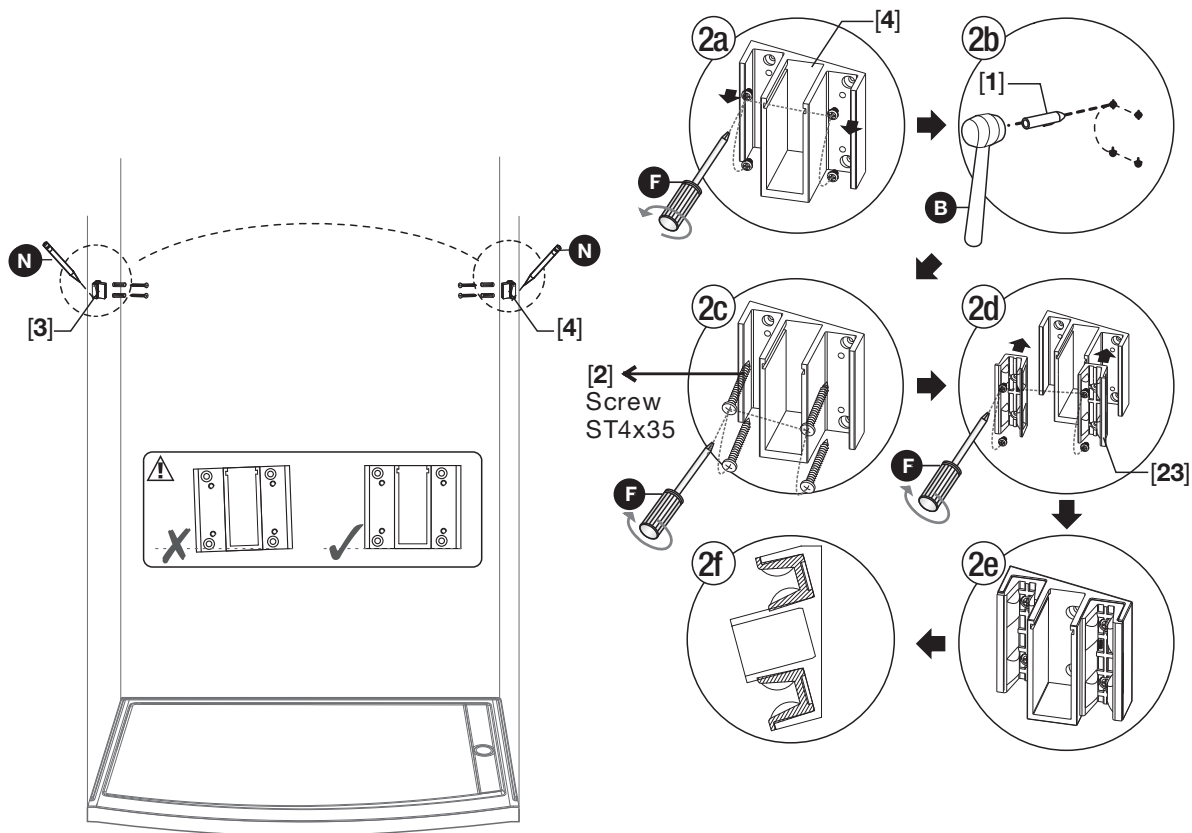
1c. If using supplied Wall Anchors [1] drill wall using 6 mm drill bit. If not using Wall Anchors, drill using appropriate size bit for screw being used.

1d to 1f. Perform same template and drilling procedure for the RIGHT side template [25].

American Standard

INSTALLING WALL BRACKETS

- In this step, you'll need following parts: [1] x8, [2] x8, [3] x1, [4] x1, [23] x4, [25] x1
- In this step, you'll need the following tools: B, F, N



2a. Starting with RIGHT Wall Bracket [4], remove all 4 screws from rubber Glass Catcher [23] and remove from Wall Bracket. **NOTE:** Observe how lip of glass catcher goes to the outside of bracket.

2b. If using Wall Anchors [1], place into each drilled hole.

2c. Screw RIGHT Wall Bracket [4] into place using 4 supplied ST4x35 [2] Phillips Head screws.

2d. Place Glass Catchers [23] back into slots of Wall Brackets keeping lip of glass catcher to the outside of the bracket and screw back into place.

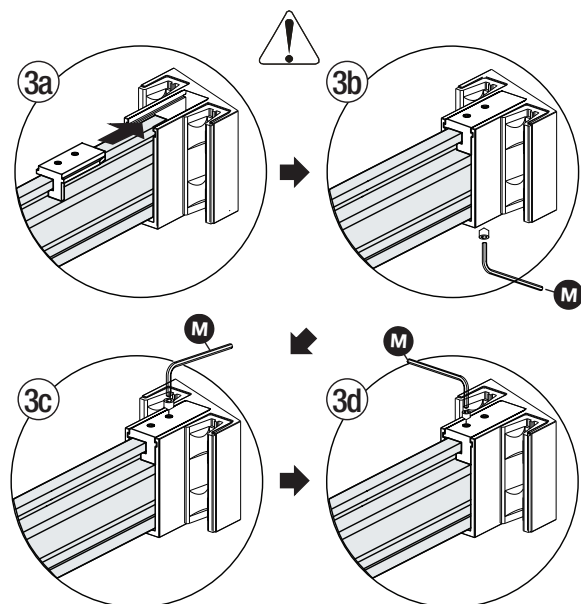
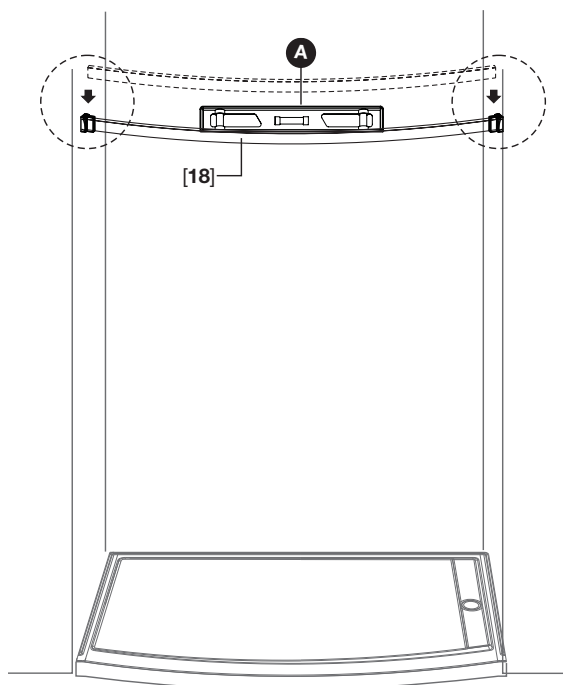
2e. Orientation of Glass Catchers [23] should look like illustrations in 2e & 2f.

2f. Perform same procedure for LEFT Wall Bracket [3] on opposite side.

3

INSTALLING TOP RAIL

- In this step, you'll need following part: [18] x1
- In this step, you'll need the following tools: A, M



VIEW FROM INSIDE

3a. Slide Top Rail [18] over and into Left [3] and Right Wall Bracket [4], (check for level) then slide metal piece over Top Rail and into the wall bracket as illustrated.

⚠ Each Wall Bracket has a metal piece with 2 set screws that slide on top of the bracket. This will need to be removed so that the Top Rail [18] can be installed. After removed, Slide Top Rail [18] over and into Left [3] and Right Wall Bracket [4]. Check that Top Rail is level, then slide metal piece over Top Rail and into the wall bracket as illustrated.

3b. Using supplied 2.5 mm Allen Key, tighten set screw on the bottom of Wall Bracket [4].

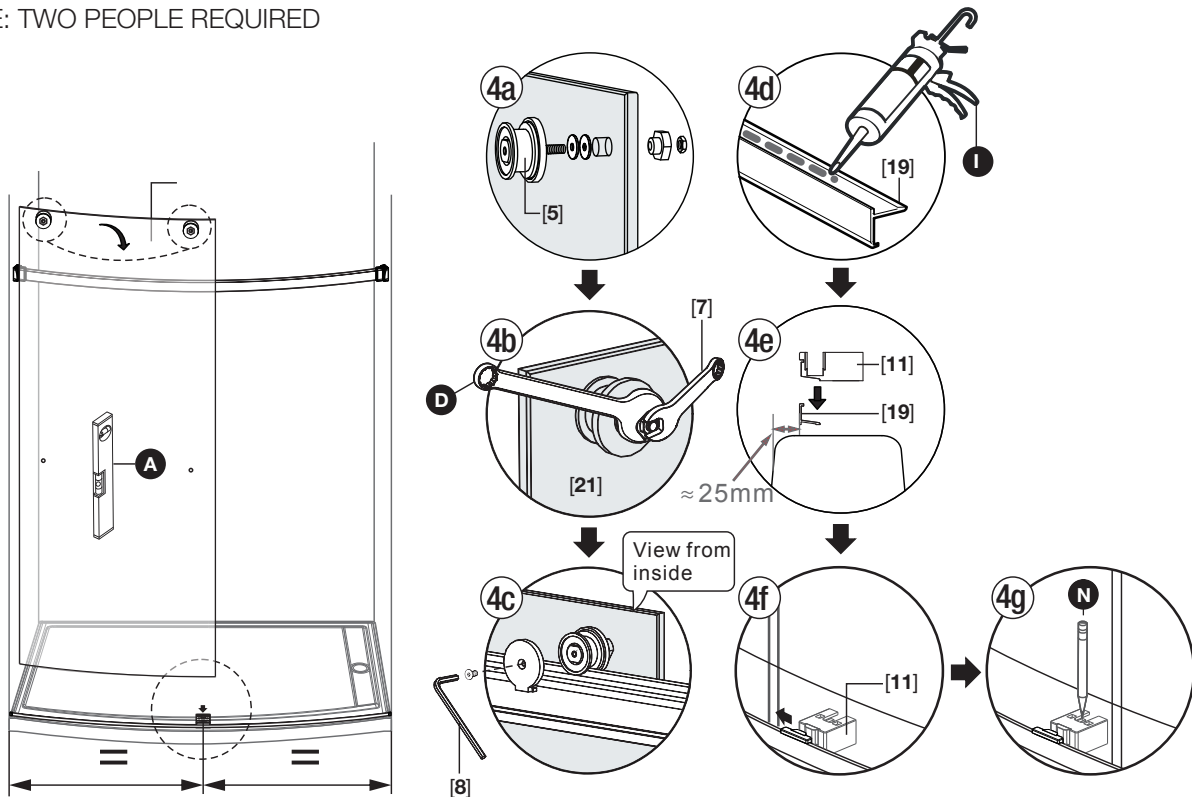
3c. Using supplied Allen Key, tighten 2 set screws on top of Wall Bracket to securely hold Top Rail [18] in place.

3d. Proceed to tighten set screws on the opposite side.

INSTALLING EXTERIOR WHEELS, EXTERIOR DOOR PANEL AND ALUMINUM SEAL

- In this step, you'll need following parts: [5] x2, [7] x1, [8] x1, [11] x1, [19] x1, [21] x1
- In this step, you'll need the following tools: A, D, I, M, N

NOTE: TWO PEOPLE REQUIRED

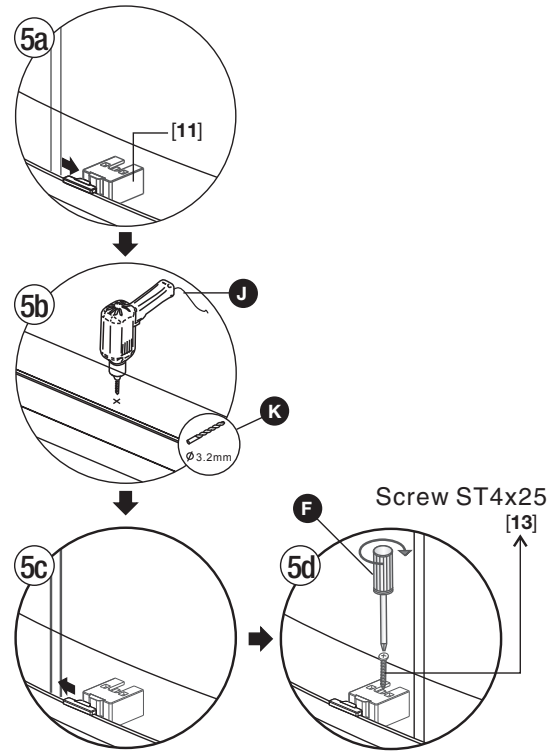
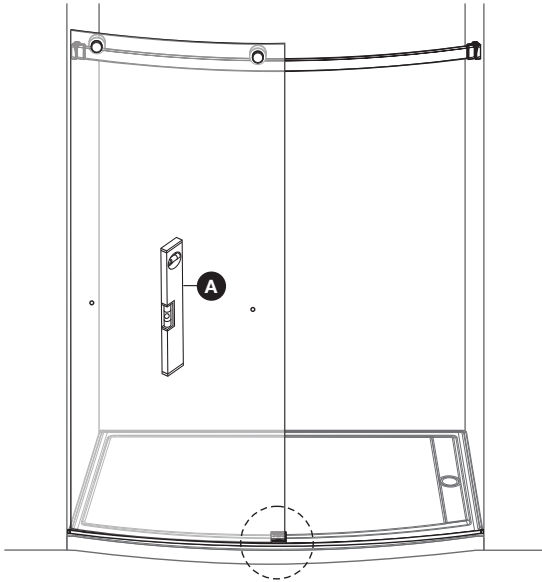


- 4a.** Remove metal and plastic nut from both Exterior Rollers [5] using supplied Wrench [7]. Also remove Hex Screw from back side of both rollers using supplied Hex Allen Key [8] and remove the metal roller cover. Insert threaded end of Roller [5] through inside hole of Exterior Door Panel [21] while keeping 2 clear plastic washers in place (ref illustration). Attach plastic and metal nut onto threaded end of Roller [5] through outside of glass panel. Install second roller on opposite side of panel in same manner.
- 4b.** Tighten metal nut on Roller using supplied Wrench [7]. It may be necessary to use an adjustable wrench on the plastic nut to hold in place while tightening metal nut.
- ⚠ Caution:** Do not over tighten metal nut or possible damage to glass panel may exist.
- 4c.** Hang Exterior Door Panel [21] onto Top Rail [18] from outside of shower and place metal covers back onto Exterior Rollers [5] (ref. illustration), insert Hex Allen screw and tighten using supplied Hex Allen Key [8].
- 4d.** Place a bead of adhesive valong the entire underside of the Aluminum Seal [19].
- 4e.** Measure and mark several locations approximately 25 mm from the outside threshold of Shower Base or Tub following the entire curvature from left to right (ref. illustration) and place Aluminum Seal [19] in place, equal distance left & right of Tub or Shower Wall.
- 4f.** Place Bottom Guide A [11] in center of Base or Tub equal distance left & right of walls and up to the inside edge of the Aluminum Seal [19] (ref. illustration).
- 4g.** Once Bottom Guide A [11] is in correct position against the Aluminum Seal [19], mark Shower Base or Tub using a pencil in the single screw hole of Bottom Guide A [11] (ref. illustration).

5

INSTALLING BOTTOM GUIDE A

- In this step, you'll need following parts: [11] x1, [13] x1
- In this step, you'll need the following tools: A, F, I, J, K

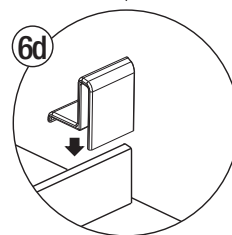
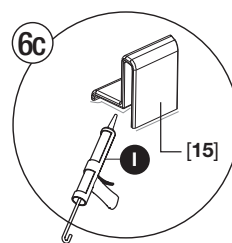
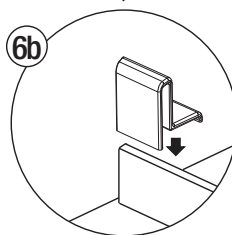
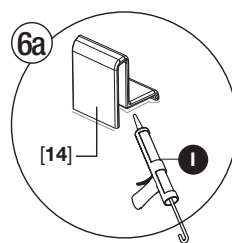
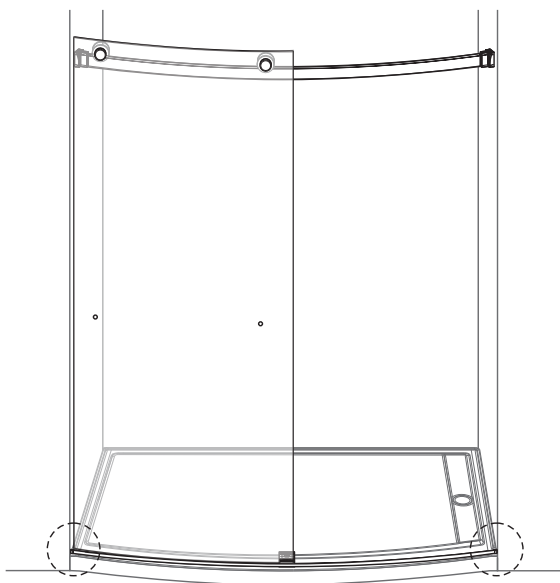


- 5a.** Carefully slide Exterior Door Panel [21] over Bottom Guide A [11] and check level of Exterior Door Panel.
 - 5b.** Remove Bottom Guide A [11] and drill previously marked Tub Deck or Shower base using a 3.2 mm drill bit.
 - 5c.** Place Bottom Guide A [11] back in place, up against the Aluminum Seal [19] and check that drilled holes line up with screw hole in Bottom Guide.
 - 5d.** Using provided ST4x25 Screw [13] apply a small amount of sealant along the entire length of the screw threads, then screw Bottom Guide A [11] into place using a Phillips Screwdriver by hand.
- ⚠ CAUTION:** Do not use a power screwdriver for this step as it could damage the shower base or tub.

6

INSTALLING LEFT & RIGHT END CAPS

- In this step, you'll need following parts: [14] x1, [15] x1
- In this step, you'll need the following tool: I

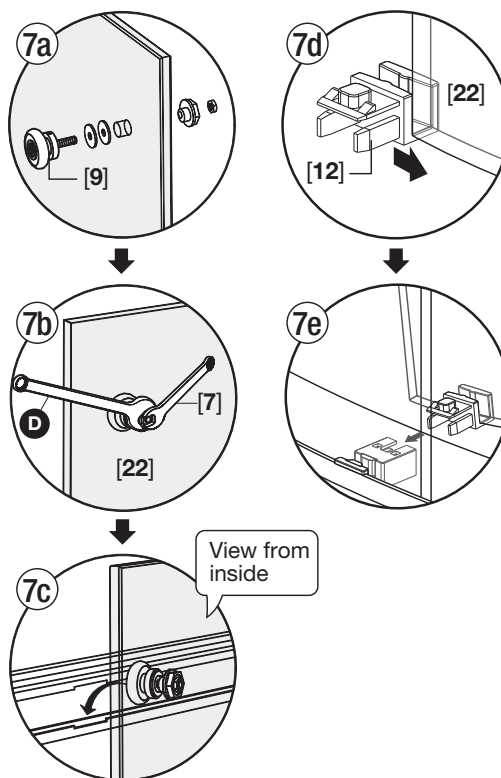
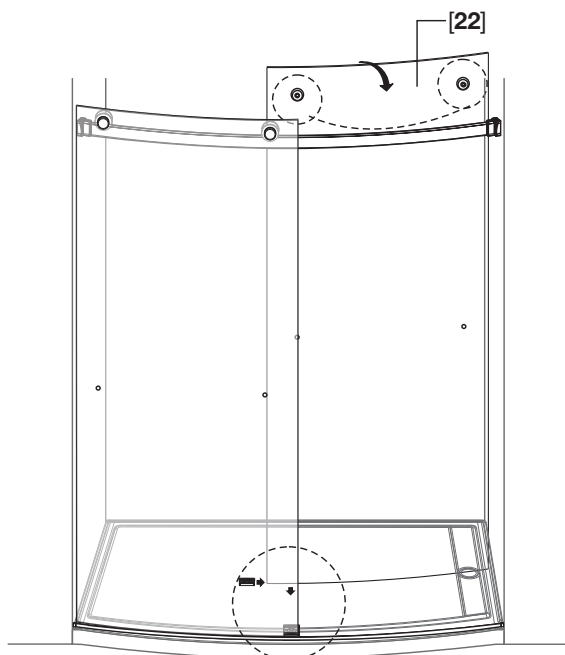


- 6a.** Apply a small amount of adhesive to the underside of Left End Cap [14].
- 6b.** Place Left End Cap [14] over left side of Aluminum Seal [19] and adjust End Cap until it contacts the left side of tub or shower wall.
- 6c.** Apply a small amount of adhesive to the underside of Right End Cap [15].
- 6d.** Place Right End Cap [15] over right side of Aluminum Seal [19] and adjust End Cap until it contacts the right side of tub or shower wall.

INSTALLING INTERIOR WHEELS, INTERIOR DOOR PANEL AND BOTTOM GUIDE B

- In this step, you'll need following parts: [9] x2, [12] x1, [22] x1
- In this step, you'll need the following tool: D

NOTE: TWO PEOPLE REQUIRED



7a. Remove metal nut from Interior Wheel [9] using supplied Wrench [7]. Separate metal and plastic nut and place threaded end of Interior Wheel into outside hole of Interior Door Panel [22] keeping the 2 clear plastic washers together on the wheel side. Place plastic nut and metal nut over threaded end of Interior Wheel. Install second Interior Wheel on opposite side of panel in same manner. (ref. illustration)

7b. Tighten metal nut on Interior Wheel [9] using supplied Wrench [7]. An additional wrench may be required to hold the plastic nut in place.

⚠ CAUTION: Do not over tighten metal nut or possible damage to glass panel may exist.

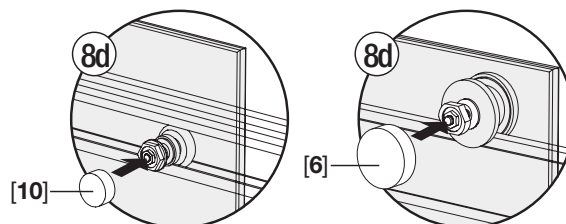
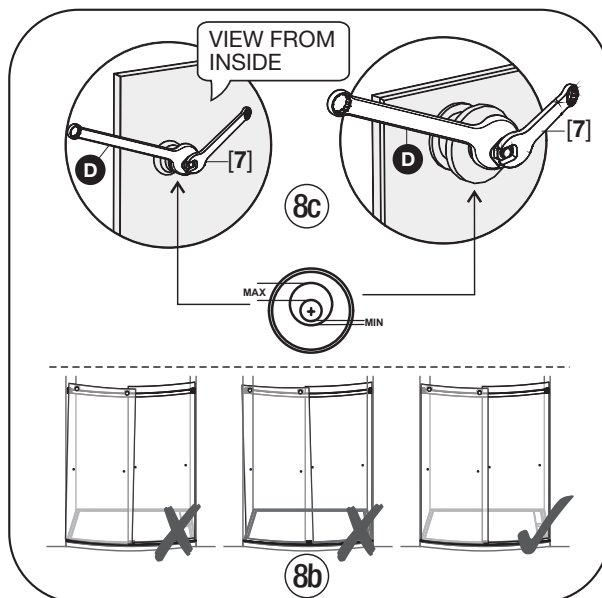
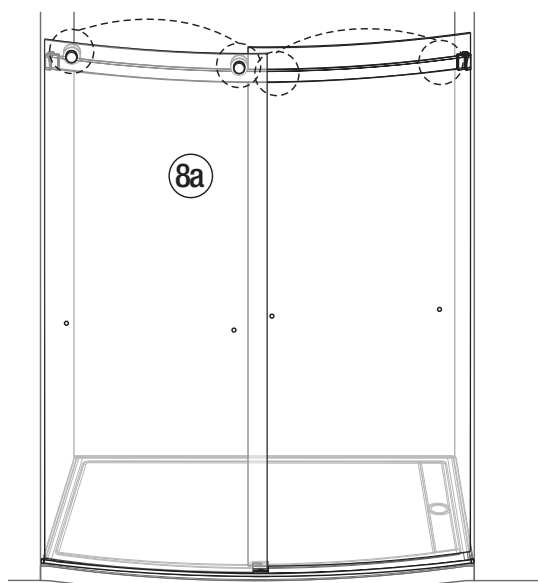
7c. Hang Interior Door Panel [22] from inside of shower or tub onto inside groove of Top Rail [22]. A notch exists in the Top Rail to allow Interior Wheel to enter groove of Top Rail.

7d. Slide Bottom Guide B [12] under bottom of Interior Door Panel [19].

7e. Move Bottom Guide [12] and Interior Door Panel [22] over Bottom Guide A [11] and snap Bottom Guide B [12] into Bottom Guide A [11] until both are securely in place. (ref illustration)

ADJUSTING EXTERIOR AND INTERIOR DOOR PANELS

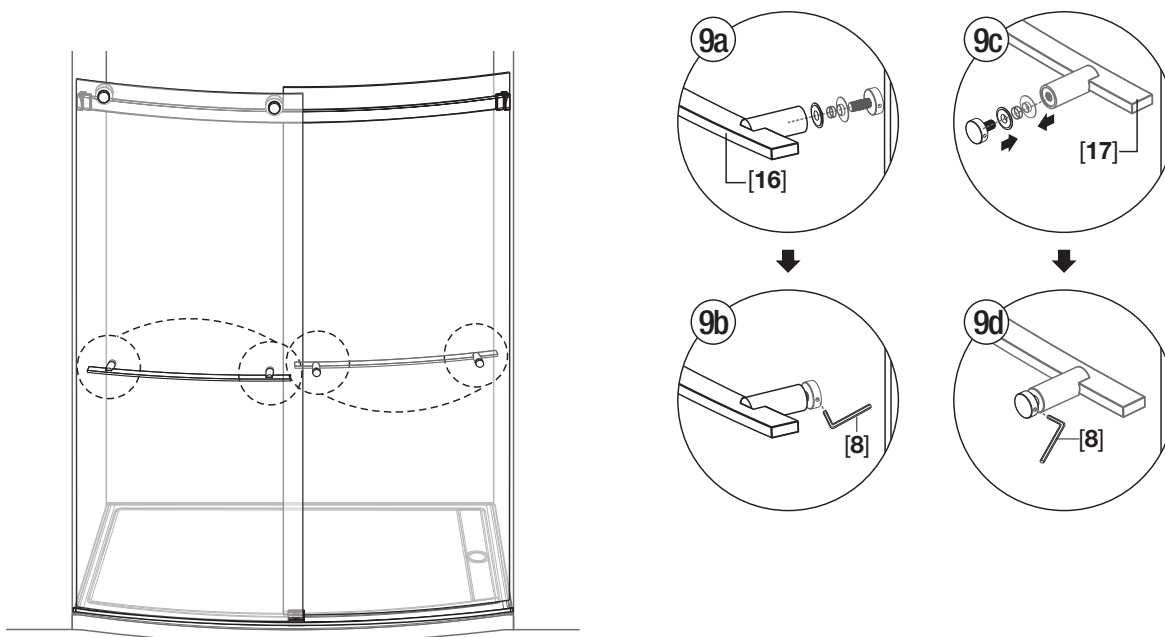
- In this step, you'll need following parts: [6] x2, [10] x2
- In this step, you'll need the following tool: D



- 8a.** Once all assembly is completed, it may be necessary to adjust both the Exterior [21] and Interior [22] Door Panels to ensure they are both level and when closed, fit up against the wall to seal properly. (ref. Illustration)
- 8b.** Close both Exterior and Interior Door Panels against the walls and observe if there are any gaps or open areas where water can come out. (ref. Illustration) If there are gaps, it will be necessary to adjust the Exterior or Interior Wheels for a proper fit at that location.
- 8c.** Depending upon which door or doors need to be adjusted, loosen the metal nut on either Exterior or Interior Wheel using the supplied Wrench [7]. Using an adjustable Wrench, rotate the plastic nut left or right while observing the door position as the plastic nut is turned which makes the door panels move up or down at that location. Once fit of doors is correct for both doors, tighten any loose nuts securely.
- 8d.** Once all adjustments are made and both door panels are correctly in place, attach both Interior Wheel Caps [10] and Exterior Roller Caps [6] and press to fit.

INSTALLING EXTERIOR AND INTERIOR HANDLE SETS

- In this step, you'll need following parts: [8] x1, [16] x1, [17] x1

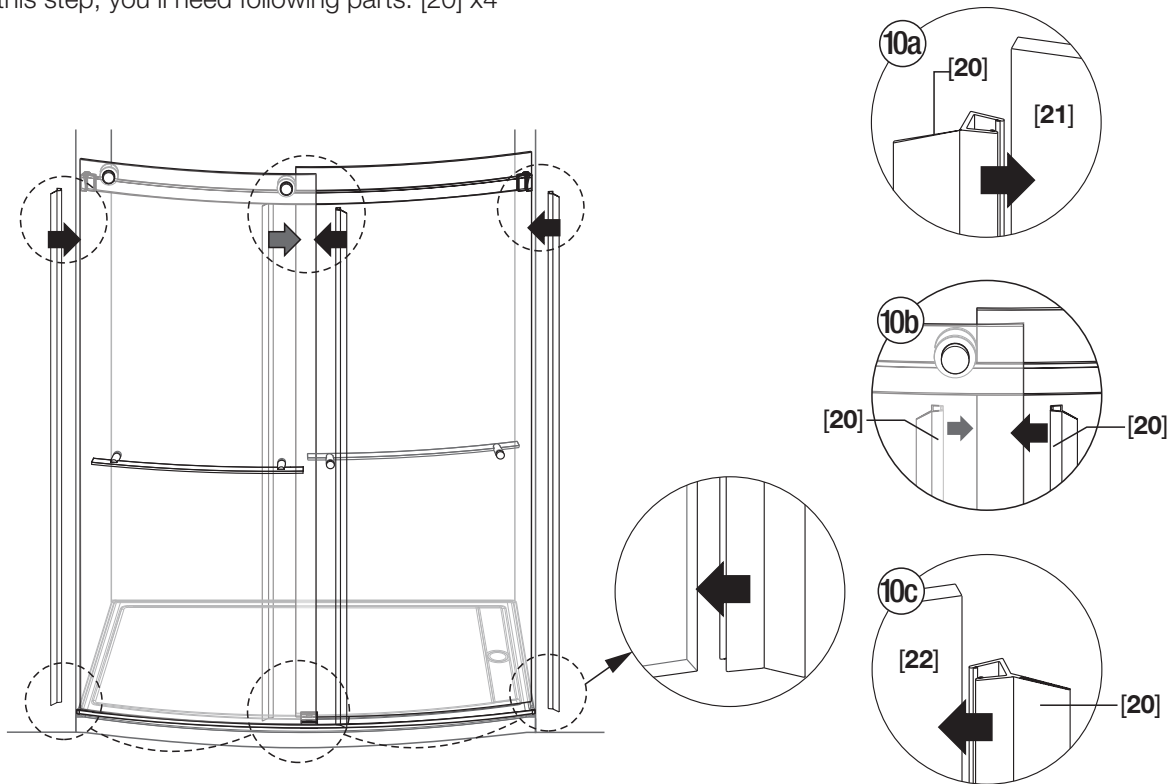


- 9a.** Unscrew both threaded nuts from Exterior Handle Set [16] and separate parts as illustrated. Install Exterior Handle on the outside of the Exterior Door Panel [21] and place the threaded nut through hole in glass from inside of door panel, ensuring plastic spacer is over threads of nut and contacting glass. Place Exterior Door Handle [16] to threaded nut while also ensuring the second plastic spacer on the Exterior Handle side is contacting the glass panel on the outside. Screw into place. **⚠ CAUTION:** Ensure that the 2 plastic spacers are between the glass panel or damage to the glass door can occur.
- 9b.** Tighten thread nut using supplied Allen Key [8]. A hole in the head of the nut provides a location to place Allen Key into to turn and tighten the nut.
⚠ CAUTION: Do not over tighten or damage to glass panel may occur
- 9c.** Unscrew both threaded nuts from Interior Handle Set [17] and separate parts as illustrated. Install Interior Handle on the inside of the Interior Door Panel [22] and place the threaded nut through hole in glass from outside of door panel, ensuring plastic spacer is over threads of nut and contacting glass. Place Interior Door Handle to threaded nut while also ensuring the second plastic spacer on the Interior Handle side is contacting the glass panel on the inside. screw into place (ref. illustration). **⚠ CAUTION:** Ensure that the 2 plastic spacers are between the glass panel or damage to the glass door can occur.
- 9d.** Tighten thread nut using supplied Allen Key [8]. A hole in the head of the nut provides a location to place Allen Key into to turn and tighten the nut.
⚠ CAUTION: Do not over tighten or damage may occur.

10

INSTALLING SIDE GASKETS

- In this step, you'll need following parts: [20] x4



10a. Install one of the Side Gaskets [20] to the left side of the Exterior Door Panel [21] as illustrated.

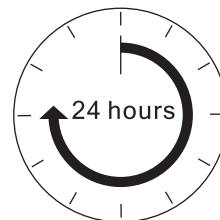
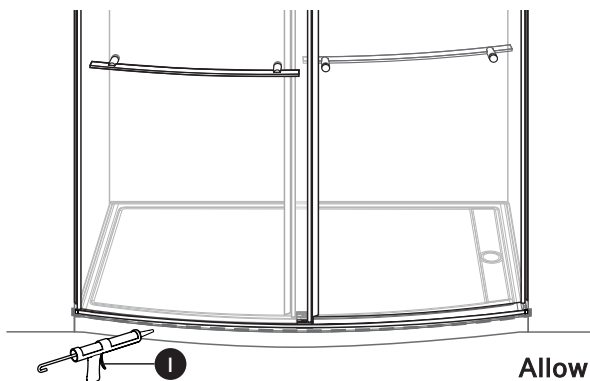
10b. Install another Side Gasket [20] to the right side of the Exterior Door Panel [21] as illustrated.
Install Side Gasket to the left side of the Inside Door Panel [22] as illustrated.

10c. Install Side Gasket (20) to the right side of the Interior Door Panel [22] as illustrated.

11

APPLYING SILICONE SEALANT

- Apply Silicone Sealant as illustrated
- Allow 24 hours for silicone to dry before use.



Allow 24 hours for silicone to dry before use.

POST INSTALLATION CLEAN-UP

Remove all construction debris from bath. Tile grout can be removed with a wooden popsicle stick or tongue depressor.

Do not use wire brushes or any other metal implement on bath surface. Post installation clean-up generally can be completed using warm water and liquid dishwashing detergent. Stubborn dirt or stains may be removed using granular Spic and Span® mixed with water.

Painter's naphtha can be used to remove excess adhesives and/or wet oil-base paint.

AFTERCARE AND CLEANING

Two primary materials are used to manufacture your new American Standard shower enclosure: tempered glass and anodized aluminum. To assure a long lasting finish on the enclosure, wipe it down with a towel after each use.

For occasional, more concentrated cleaning efforts Lysol Non-Abrasive Bathroom Cleaner works extremely well. Be sure that any over spray falling on the aluminum frame is rinsed thoroughly and dried. Many over-the-counter cleaners, if applied to the aluminum and left on, will harm the metal finish and cause permanent damage even though their directions indicate safe use on shower doors. Never use a scouring agent to clean the aluminum.

Spic And Span® Is A Registered Trademark Of The Spic And Span Company

American Standard

WARRANTY

SHOWER DOORS 10 YEAR WARRANTY

AS America, Inc. ("American Standard®") warrants to the original non-commercial owner that it will, at its sole option, repair or replace this product or any part of this product, if it confirms that the product is defective in materials or workmanship under normal use and maintenance for 10 years. This warranty is non-transferable to subsequent purchasers or owners. The sole exception to the non-transferability of this warranty is that if this product is purchased by a plumber, contractor or other service provider, this warranty extends to the first property owner on whose behalf the product was purchased for installation.

For this warranty to become effective, the warranty registration process must be completed via the internet or telephone per the warranty registration instructions.

The warranty term for non-commercial owners does not apply to commercial owner installations. Commercial owner installations shall have a warranty of 3 year(s), measured from the date of initial purchase. A "commercial owner installation" includes use of the products in apartments and other rental units, non-residential facilities, hotels, commercial businesses and/or other public accommodations. Except for warranty duration, all other warranty terms apply to commercial owner installations.

This warranty DOES NOT COVER the following:

1. Because American Standard cannot control the quality of products sold by unauthorized sellers, this warranty applies only to American Standard products which were purchased from American Standard or an American Standard authorized seller, unless otherwise prohibited by law. American Standard reserves the right to reject warranty claims from purchasers for products purchased from unauthorized sellers, including unauthorized Internet sites.
2. Defects or damage arising from shipping, installation, alterations, accidents, abuse, misuse, lack of proper maintenance and use of other than genuine American Standard replacement parts, in all cases whether caused by a plumbing contractor, service company, the owner or any other person.
3. Deterioration through normal wear and tear.
4. WATER DAMAGE, OR DAMAGES RESULTING FROM ABUSE OR MISUSE OR FROM FAILURE TO INSTALL OR MAINTAIN THIS PLUMBING PRODUCT IN ACCORDANCE WITH THE WRITTEN INSTRUCTIONS FURNISHED BY AS AMERICA, INC.
5. USE OF CLEANING PRODUCTS CONTAINING CALCIUM HYPO CHLORITE (CHLORINE), SCOURING POWDERS OR PADS SHALL NOT BE COVERED.
6. THE USE OF SCENTED CANDLES IN CLOSE PROXIMITY WITH THIS PRODUCT CAN RESULT IN PERMANENT STAINING OF THE FINISH.
7. Expense of normal maintenance.
8. All costs of removal, transportation, labor, reinstallation or other costs including postage and/or shipping costs to obtain warranty service shall be paid by the purchaser.
9. ANY LIABILITY FOR CONSEQUENTIAL OR INCIDENTAL DAMAGES, ALL OF WHICH ARE HEREBY EXPRESSLY DISCLAIMED. Some States do not allow the exclusion or limitation of incidental or consequential damages, so this limitation or exclusion may not apply to you. ANY IMPLIED WARRANTIES, INCLUDING THOSE OF MERCHANTABILITY OR FITNESS FOR PURPOSE INTENDED, ARE LIMITED IN DURATION TO THE DURATION OF THIS WARRANTY. Some States do not allow limitations on how long an implied warranty lasts, so this limitation may not apply to you.
10. Responsibility for compliance with local code requirements ARE EXCLUDED FROM THIS WARRANTY. (Since local code requirements vary greatly distributors, retailers, dealers, installation contractors and users of plumbing products should determine whether there are any code restrictions on the installation or use of a specific product.) This warranty gives you specific legal rights, and you may also have other rights which vary from State to State.

OBTAINING WARRANTY SERVICE

If you believe that you have a warranty claim, contact American Standard, either through an authorized AS America, Inc. dealer or re-seller, by writing to the addresses below, or visiting the website below:

UNITED STATES

American Standard Brands
30 Knightsbridge Road, Suite 301
Piscataway, New Jersey 08854
Attention: Director of Customer Care
For residents of the United States,
warranty information may also be obtained
by calling the following toll free number:
(800) 442-1902
www.americanstandard.com

CANADA

LIXIL Canada, Inc.
5900 Avebury Rd.
Mississauga, Ontario
Canada L5R 3M3
Toll Free: (800) 387-0369
www.americanstandard.ca

MEXICO

American Standard B&K Mexico
S. de R.L. de C.V.
Via Morelos #330
Col. Santa Clara
Ecatepec 55540 Edo. Mexico
Toll Free: 01-800-839-1200
www.americanstandard.com.mx

PLEASE COMPLETE AMERICAN STANDARD WARRANTY REGISTRATION PROCESS AND SAVE THIS WARRANTY INFORMATION

IMPORTANT: Registration of the shower doors must be completed for this warranty to become effective. Your registration will make it easier to contact you in the event of a product recall.*

INSTRUCTIONS: Register your shower doors at www.americanstandard.com. Please save your proof of purchase (sale receipt). If you need assistance or do not have access to our website, please contact American Standard Customer Care at: (800) 442-1902. An American Standard representative will assist in completing the warranty registration.

*In California, your warranty rights remain intact even if you do not complete the registration process.

THIS WARRANTY IS NOT TRANSFERABLE FROM ORIGINAL CONSUMER PURCHASER.

American Standard

TELL US WHAT YOU THINK!



Please leave us a product review or story at **americanstandard.com/reviews**



Great Tub

03/13/2018 06:52:29 CDT American Standard Bathtubs Saver 60 Inch by 34 Inch Integral Apron Bathtub, Left Hand Drain

Love the tub. It is very roomy and would definitely buy it again. Our old tub cracked so we got this one to replace it. This one feels like it is more durable and not as flimsy as the last one.

Register your warranty and sign up for an idea-filled newsletter at **americanstandard.com/warranty**.

Find installation videos at **youtube.com/americanstandard**.

≡ WANT MORE INFO?

For questions or help call us at **800-442-1902**,
or visit **americanstandard.com**