

# THE BEST BATH OR SHOWER EXPERIENCE? THE ONE NOBODY INTERRUPTS.

## **Thank you for buying an American Standard bath or shower product.**

We're so grateful you did, and you will be too. Not just while you're waking up each morning, but also every time a dirty gardener, sweaty soccer player, or muddy dog gets cleaned up. How do we know? Just like you, we've lived with that same beautiful chaos called life for almost 150 years. We believe that while every home should appreciate in value, we never forget the sentimental value that grows from enjoying life in the heart of home—your kitchen and bath. That's why we love your stories and ideas; they help us innovate with products that make your life easier.

Or, visit **[www.americanstandard-us.com/bathroom/bathtub-and-shower-doors](http://www.americanstandard-us.com/bathroom/bathtub-and-shower-doors)** to watch video, view/download installation manuals or learn more about your product.

## **Have a question or need help on install?**

For questions or help on installation call us at **800-442-1902**.

**For a copy of our warranty in additional languages,**  
please visit [Americanstandard.com](http://Americanstandard.com)

*American Standard*

# OWNERS MANUAL

## Mainstream® Shower Door

AM00842400.213

### INSTALLATION INSTRUCTIONS

Thank you for selecting American Standard – the benchmark of fine quality for over 150 years. To ensure this product is installed properly, please read these instructions carefully before you begin. Certain installations may require professional help. Also be sure your installation conforms to local codes.

#### INSTALLATION PREPARATION

- Please unpack carefully and identify all parts needed for installation by using the Box Contents page as a reference. Inspect the product and report any damages or missing parts immediately to customer care by calling 800-442-1902. Follow the prompts for consumer/shower doors.
- This Mainstream shower door was developed to be installed with the Mainstream shower base and Mainstream shower wall set. If you are using a different base or walls, you may need additional hardware and tools to complete the installation.
- The Mainstream shower door dimensions are nominal and meant for a standard 32" x 72" (813 x 1829 mm) alcove. Alcove sizes may vary based on stud and wall material thickness. Please double check your measurements prior to starting your install.
- Handle the glass panels carefully and" protect the edges. Unequal pressure applied during installation can cause cracking or breakage, and the sharp corners on the glass panels can cause damage to the wall or floor materials.
- Ensure adequate wall support is provided to area where shower door is to be installed.
- Shower base and wall material must be installed prior to the door installation.
- Wear protective equipment during installation to avoid injury.
- Please keep these instructions for after care and customer service details.

 **WARNING: PRODUCT IS HEAVY AND REQUIRES TWO PEOPLE FOR INSTALLATION.**

 **WARNING: TEMPERED GLASS CANNOT BE DRILLED, CUT OR MODIFIED.**

Image shown may vary from product purchased.

*American Standard*

## INSIDE THE BOX



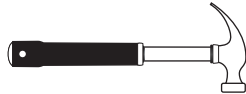
## RECOMMENDED TOOLS AND MATERIALS

Installation steps will indicate which tools should be used with associated letter



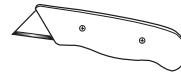
Level

**A**



Hammer

**B**



Utility Knife

**C**



Adjustable Wrench

**D**



Painter's  
Masking Tape

**E**



Phillips  
Screwdriver

**F**



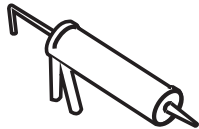
Regular  
Screwdriver

**G**



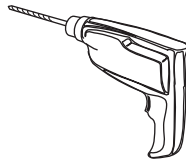
Safety  
Equipment

**H**



Caulking Gun

**I**



Drill

**J**



1/4" (6 mm) & 1/8" (3.2 mm)  
Drill Bits #2 Square Drive Bit

**K**



Tape  
Measure

**L**



2.5 mm Allen Key

**M**



Pencil

**N**



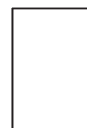
## BEFORE YOU BEGIN

Inspect your product thoroughly before installing. Take extra care in handling surfaces of the bath and use only non-abrasive cloths to avoid scratching. Observe all local plumbing and building codes.

*American Standard*

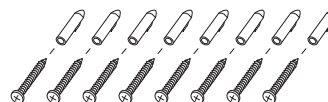
## BOX CONTENTS

1x Installation Instruction



[1] 8x Wall Anchors

[2] 8x Screws ST4x35



[3] 8x Screws ST4x10



[4] 16x Screw Caps

[5] 16x Back Screw Caps

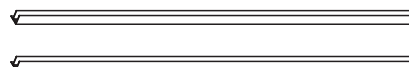


[6] 1x Bottom Gasket-A

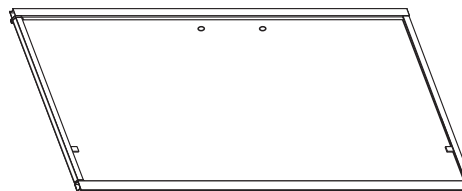
[7] 1x Bottom Gasket-B



[8] 2x Wall Posts



[9] 1x Panel

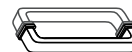


[10] 2x Wall Jamb Caps

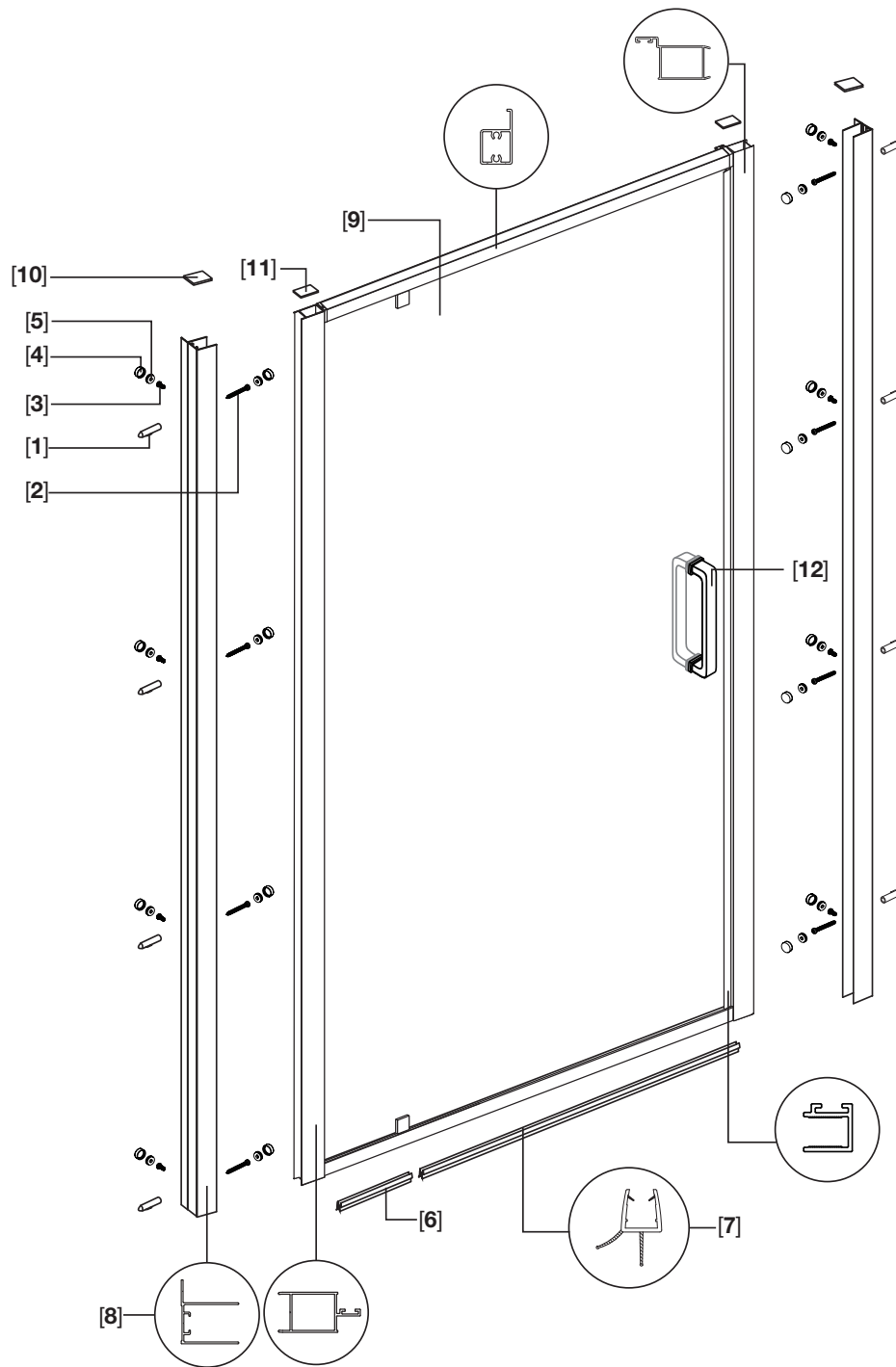
[11] 2x Expander Caps



[12] 1x Handle Set



# ASSEMBLY DRAWING



- [1] 8x Wall Anchors
- [2] 8x Screws ST4x35
- [3] 8x Screws ST4x10
- [4] 16x Screw Caps
- [5] 16x Back Screw Caps
- [6] 1x Bottom Gasket-A

- [7] 1x Bottom Gasket-B
- [8] 2x Wall Posts
- [9] 1x Panel
- [10] 2x Wall Jamb Caps
- [11] 2x Expander Caps
- [12] 1x Handle Set

# INSTALLATION INSTRUCTIONS

## IMPORTANT GENERAL INFORMATION

This unit is best installed by two people.

Cover drain with tape prior to installation to prevent the loss of small parts.

Unpack your unit carefully and inspect for freight damage. Lay out and identify all parts using Box Contents and Assembly Drawing as a reference. Before discarding the carton check to see that no small hardware parts have fallen to the bottom of the box. If any parts are damaged or missing refer to the description noted in the instructions when inquiring about replacements.

Handle the glass panels carefully and protect the edges. Although tempered glass is very resistant to breakage, the glass can still break if unequal pressure is applied during installation and the sharp corners of the panel can damage tile and flooring surfaces.

Be sure to wear safety glasses whenever drilling or cutting. When drilling holes in ceramic tile or marble use a center punch and hammer to carefully break the glazed surface. This will prevent skidding when drilling.

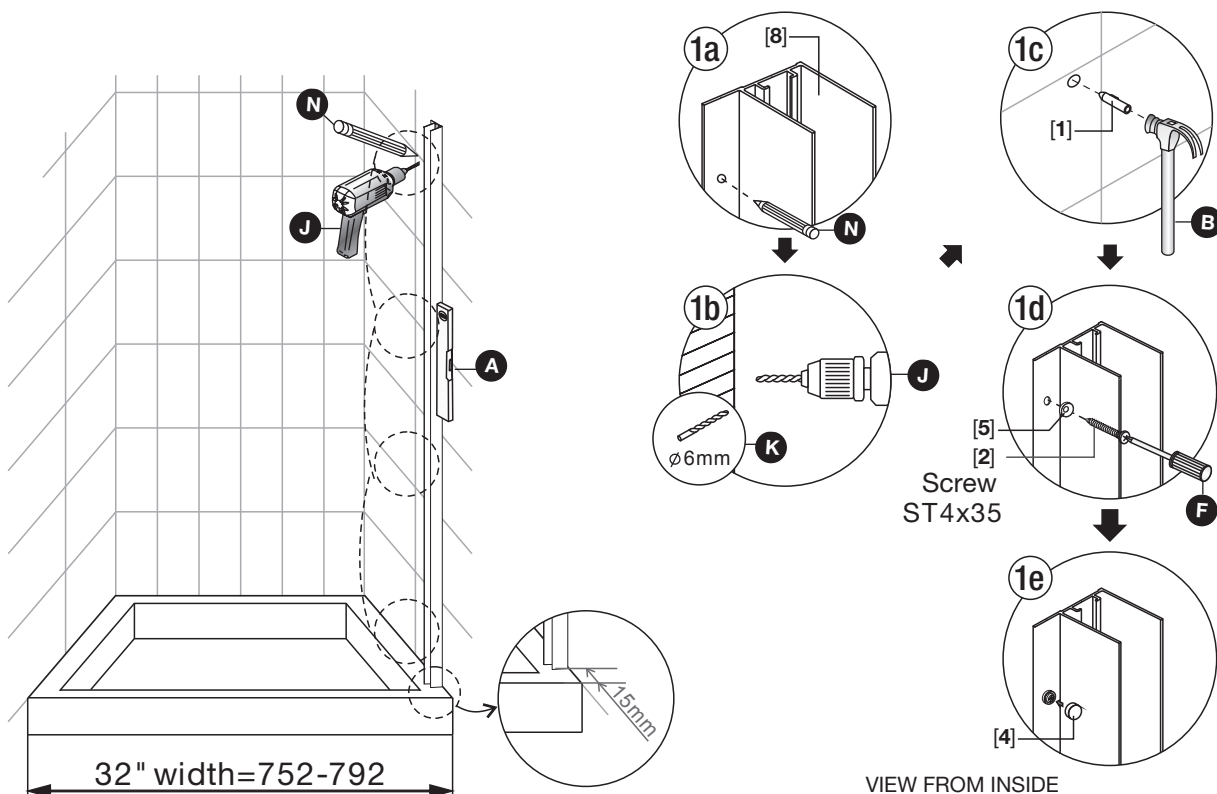
**NOTE: TEMPERED GLASS CANNOT BE DRILLED, CUT OR MODIFIED.**

## INSTALLATION OF WALL POST

- In this step, you'll need following parts: [1] x4, [2] x4, [4] x4, [5] x4, [8] x1
- In this step, you'll need the following tools: A, B, F, J, K, N

**NOTE:** Please decide which way you want the door to swing open prior to installation. Installation shown is with door handle on the right side. To reverse, simply rotate door 90 degrees so holes in door on are the left.

**NOTE:** Use a level to make sure your alcove is plumb and square prior to installation.

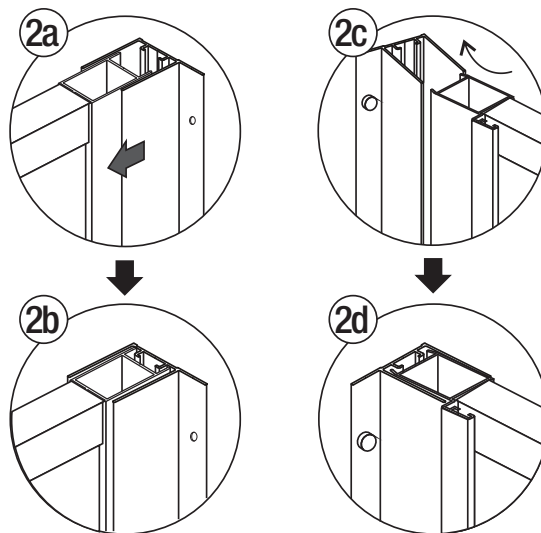
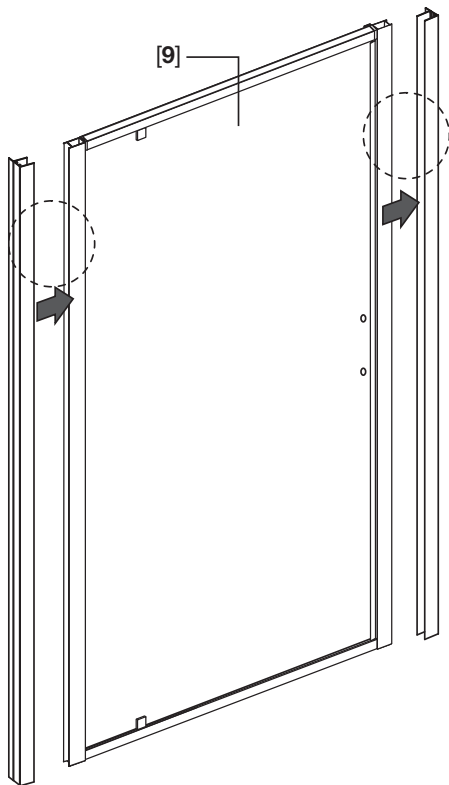


- 1a.** Remove Wall Posts [8] from box and place 15 mm from outer edge of base (ref illustration). The flange side of the wall post with holes drilled should face inside of shower. Ensure Wall Post [8] is plumb and mark each of the pre-drilled holes.
- 1b.** Remove Wall Post [8] and if using Wall Anchors [1] drill previously marked locations using a 6 mm drill bit. If not using Wall Anchors, drill using appropriate size bit for screw being used.
- 1c.** Insert Wall Anchors [1] into each drilled hole.
- 1d.** Place Wall Post [8] back onto wall over previously drilled hole and screw Post into place using ST4x35 [2] and Back Screw Caps [5] (ref. illustration).
- 1e.** Place Screw Caps [4] over each Back Screw Cap [5] and snap into place.

## INSTALLATION OF DOOR PANEL AND OPPOSITE WALL POST

- In this step, you'll need following parts: [8] x1, [9] x1

**NOTE:** This installation requires 2 people.



VIEW FROM INSIDE

**2a.** Insert Door Panel [9] into slot of previously installed Wall Post [8]. (ref illustration A)

NOTE: Verify door handle location.

**2b.** Fully insert Door Panel [9] into Wall Post [8] until it stops. (ref illustration B)

**2c.** Place second Wall Post [8] over opposite end of Door Panel [9] ensuring the flange side with drilled holes is facing inside of shower area. (ref illustration C)

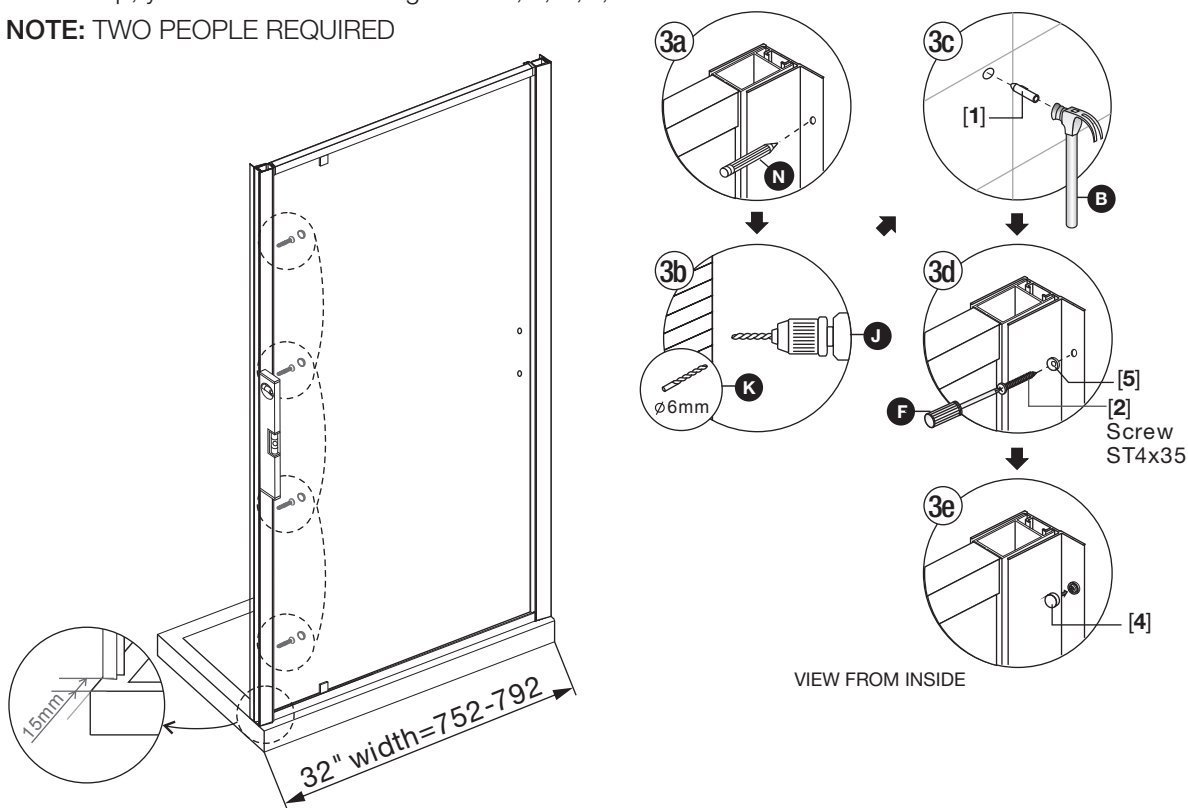
**2d.** Press Wall Post [8] fully into place over the Door Panel [9].



## INSTALLATION OF OPPOSITE SIDE WALL POST

- In this step, you'll need following parts: [5] x2, [8] x1, [11] x1, [19] x1, [21] x1
- In this step, you'll need the following tools: B, J, K, F, N

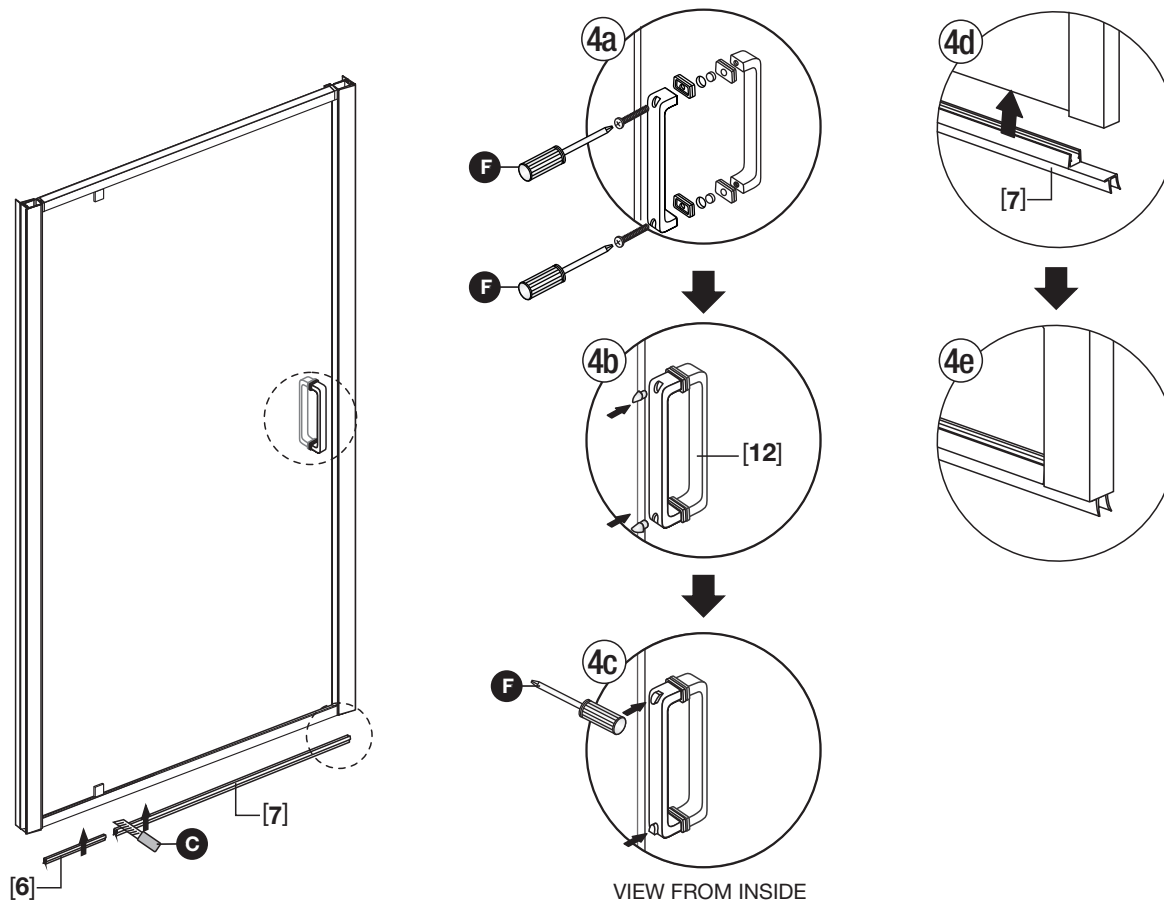
**NOTE: TWO PEOPLE REQUIRED**



- 3a.** Place opposite Wall Post [8] 15 mm from outer edge of base (ref illustration) as in step 1. Ensure Wall Post is plumb and mark each of the pre-drilled holes.
- 3b.** Remove Wall Post [8] and if using Wall Anchors [1] drill previously marked locations using a 6 mm drill bit. If not using Wall Anchors, drill using appropriate size bit for screw being used.
- 3c.** Insert Wall Anchors [1] into each drilled hole.
- 3d.** Place Wall Post [8] back onto wall over previously drilled holes and screw Post into place using ST4x35 [2] and Back Screw Caps [5]. (ref illustration)
- 3e.** Place Screw Caps [4] over each Back Screw Cap [5] and snap into place.

## INSTALLING DOOR HANDLE

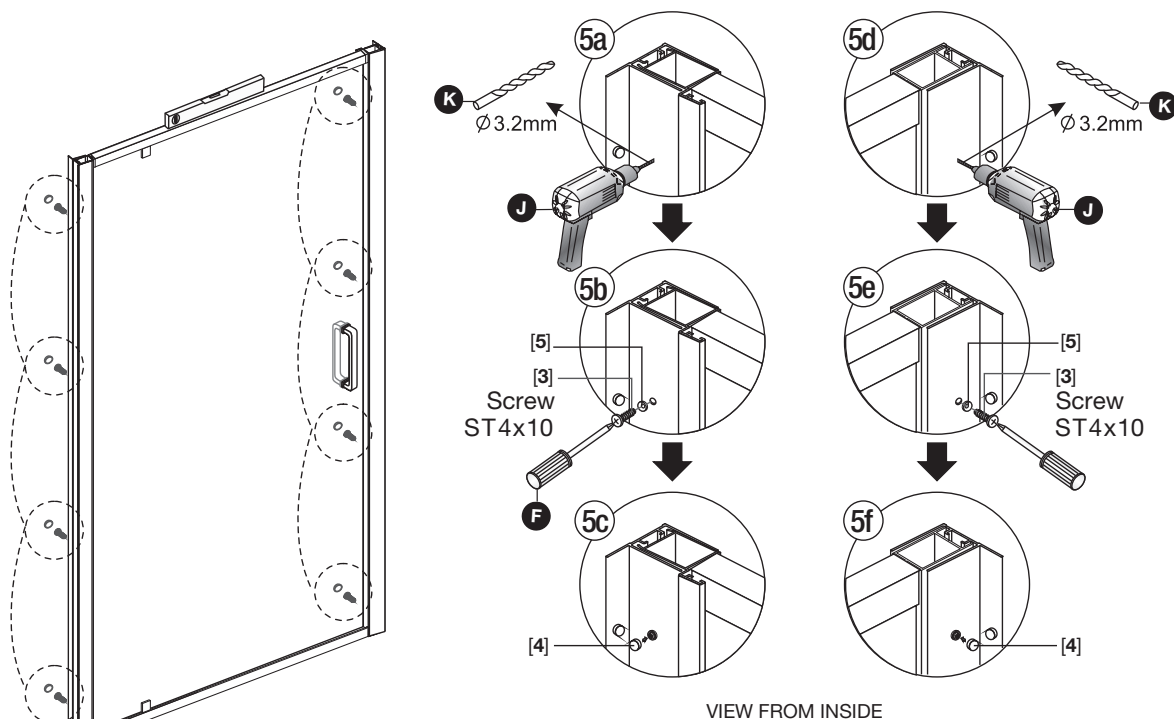
- In this step, you'll need following parts: [6] x1, [7] x1, [12] x1
- In this step, you'll need the following tools: C, F



- 4a.** Remove Door Handle [12] from box and separate the 2 halves by removing the 2 Phillips Head Screws. The Door Handle with screws through it is installed from inside shower area. Ensure all pieces are attached to Door Panel [9] as illustrated (Ref. 4a), then screw back into place.
- 4b.** Place plastic screw covers over each screw head.
- 4c.** Gently tap the screw covers until snugly in place and flush with the Door Handle [12].
- 4d.** Install Bottom Gasket-B [7] under bottom of Door Panel as illustrated and on "Assembly Drawing". It will be necessary to trim the Bottom Gasket on one end so it clears the door hinge. Then install smaller Bottom Gasket-A [6]. (ref illustration)
- 4e.** Ensure both Bottom Gasket-A [6] & B [7] are firmly in place under the door panel.

## FINAL DOOR ADJUSTMENT

- In this step, you'll need following parts: [3] x8, [4] x8, [5] x8
- In this step, you'll need the following tools: F, K, J

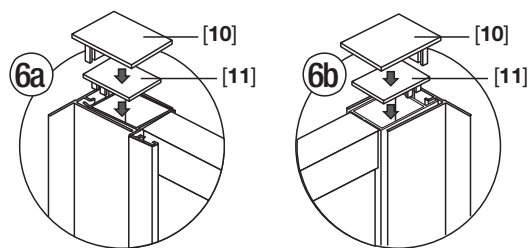
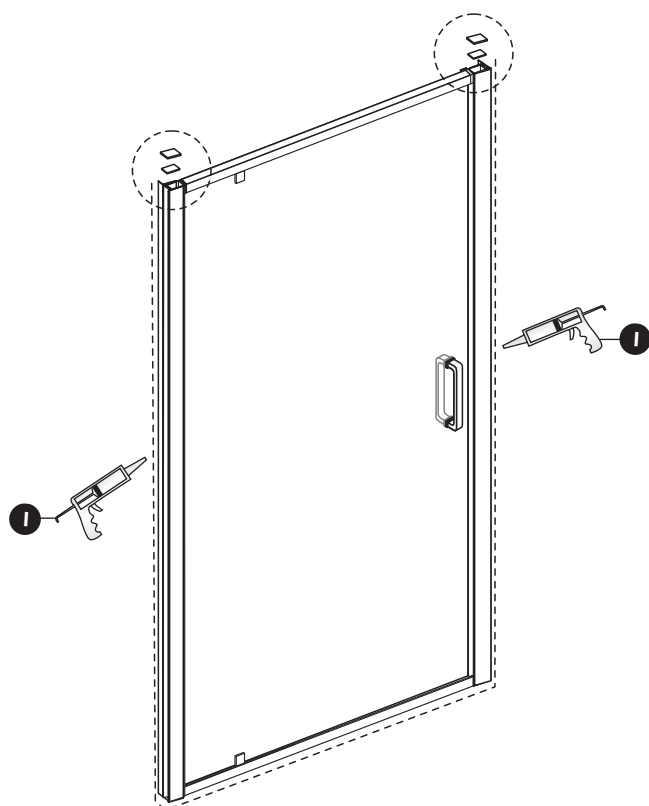


- 5a.** Now that the door is in place it will be necessary to **LEVEL** and **PLUMB** the door evenly within the 2 Wall Posts [8]. Place level on top of door and move door within Wall Posts until level. Also check that door is plumb. Once door is level and plumb, drill Wall Post [8] at 4 locations (from inside shower) using 3.2 mm drill, (ref illustration A). Ensure door does not move once level and plumb.
- 5b.** Screw each drilled hole using 4 ST4x10 screws [3] and Back Screw Caps [5]. Do not use an electric powered screw gun, only hand screwdriver or screw may strip.
- 5c.** Place Screw Caps [4] over each screw and press firmly into place.
- 5d.** Check that door level and plumb again. Once it's determined the door is in the correct position, drill Wall Post [8] at 4 locations (from within shower area) using 3.2 mm drill, (ref illustration B). Ensure door does not move once level and plumb.
- 5e.** Screw each drilled hole using 4 ST4x10 screws [3] and Back Screw Caps [5]. Do not use an electric powered screw gun, only hand screwdriver or screw may strip.
- 5f.** Place Screw Caps [4] over each screw and press firmly into place.

# 6

## INSTALLING WALL & EXPANDER CAPS

- In this step, you'll need following parts: [10] x2, [11] x2
- In this step, you'll need the following tool: I

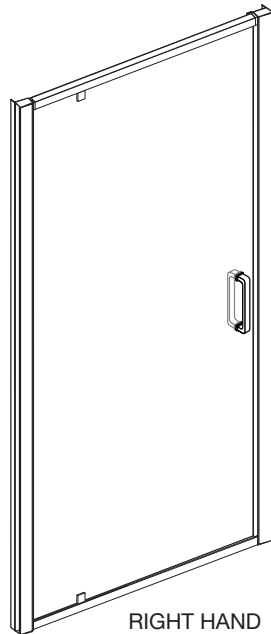


VIEW FROM INSIDE

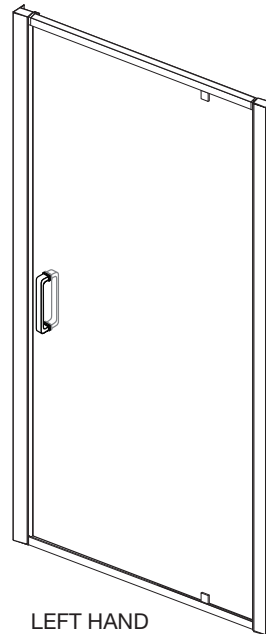


WAIT 24 HOURS BEFORE USE

- 6a.** Install Expander Cap [11] over the top of the Wall Post [8] and Door Panel [9]. Note that there is a left and right to the Expander Cap. Then place the Wall Jam Cap [10] for a snug fit over the Expander Cap (ref illustration). Repeat on opposite side.
- 6b.** Once all trim caps are installed, caulk both left & right Wall Post [8] and bottom of door from the inside. Allow 24 hours to fully dry.



RIGHT HAND



LEFT HAND

## POST INSTALLATION CLEAN-UP

Remove all construction debris from bath. Tile grout can be removed with a wooden popsicle stick or tongue depressor.

Do not use wire brushes or any other metal implement on bath surface. Post installation clean-up generally can be completed using warm water and liquid dishwashing detergent. Stubborn dirt or stains may be removed using granular Spic and Span® mixed with water.

Painter's naphtha can be used to remove excess adhesives and/or wet oil-base paint.

### AFTERCARE AND CLEANING

Two primary materials are used to manufacture your new American Standard shower enclosure: tempered glass and anodized aluminum. To assure a long lasting finish on the enclosure, wipe it down with a towel after each use.

For occasional, more concentrated cleaning efforts Lysol Non-Abrasive Bathroom Cleaner works extremely well. Be sure that any over spray falling on the aluminum frame is rinsed thoroughly and dried. Many over-the-counter cleaners, if applied to the aluminum and left on, will harm the metal finish and cause permanent damage even though their directions indicate safe use on shower doors. Never use a scouring agent to clean the aluminum.

Spic And Span® Is A Registered Trademark Of The Spic And Span Company

# WARRANTY

## SHOWER DOORS 5 YEAR WARRANTY

AS America, Inc. ("American Standard®") warrants to the original non-commercial owner that it will, at its sole option, repair or replace this product or any part of this product, if it confirms that the product is defective in materials or workmanship under normal use and maintenance for 5 years. This warranty is non-transferable to subsequent purchasers or owners. The sole exception to the non-transferability of this warranty is that if this product is purchased by a plumber, contractor or other service provider, this warranty extends to the first property owner on whose behalf the product was purchased for installation.

For this warranty to become effective, the warranty registration process must be completed via the internet or telephone per the warranty registration instructions.

The warranty term for non-commercial owners does not apply to commercial owner installations. Commercial owner installations shall have a warranty of 3 year(s), measured from the date of initial purchase. A "commercial owner installation" includes use of the products in apartments and other rental units, non-residential facilities, hotels, commercial businesses and/or other public accommodations. Except for warranty duration, all other warranty terms apply to commercial owner installations.

This warranty DOES NOT COVER the following:

1. Because American Standard cannot control the quality of products sold by unauthorized sellers, this warranty applies only to American Standard products which were purchased from American Standard or an American Standard authorized seller, unless otherwise prohibited by law. American Standard reserves the right to reject warranty claims from purchasers for products purchased from unauthorized sellers, including unauthorized Internet sites.
2. Defects or damage arising from shipping, installation, alterations, accidents, abuse, misuse, lack of proper maintenance and use of other than genuine American Standard replacement parts, in all cases whether caused by a plumbing contractor, service company, the owner or any other person.
3. Deterioration through normal wear and tear.
4. WATER DAMAGE, OR DAMAGES RESULTING FROM ABUSE OR MISUSE OR FROM FAILURE TO INSTALL OR MAINTAIN THIS PLUMBING PRODUCT IN ACCORDANCE WITH THE WRITTEN INSTRUCTIONS FURNISHED BY AS AMERICA, INC.
5. USE OF CLEANING PRODUCTS CONTAINING CALCIUM HYPO CHLORITE (CHLORINE), SCOURING POWDERS OR PADS SHALL NOT BE COVERED.
6. THE USE OF SCENTED CANDLES IN CLOSE PROXIMITY WITH THIS PRODUCT CAN RESULT IN PERMANENT STAINING OF THE FINISH.
7. Expense of normal maintenance.
8. All costs of removal, transportation, labor, reinstallation or other costs including postage and/or shipping costs to obtain warranty service shall be paid by the purchaser.
9. ANY LIABILITY FOR CONSEQUENTIAL OR INCIDENTAL DAMAGES, ALL OF WHICH ARE HEREBY EXPRESSLY DISCLAIMED. Some States do not allow the exclusion or limitation of incidental or consequential damages, so this limitation or exclusion may not apply to you. ANY IMPLIED WARRANTIES, INCLUDING THOSE OF MERCHANTABILITY OR FITNESS FOR PURPOSE INTENDED, ARE LIMITED IN DURATION TO THE DURATION OF THIS WARRANTY. Some States do not allow limitations on how long an implied warranty lasts, so this limitation may not apply to you.
10. Responsibility for compliance with local code requirements ARE EXCLUDED FROM THIS WARRANTY. (Since local code requirements vary greatly distributors, retailers, dealers, installation contractors and users of plumbing products should determine whether there are any code restrictions on the installation or use of a specific product.) This warranty gives you specific legal rights, and you may also have other rights which vary from State to State.

### OBTAINING WARRANTY SERVICE

If you believe that you have a warranty claim, contact American Standard, either through an authorized AS America, Inc. dealer or re-seller, by writing to the addresses below, or visiting the website below:

#### UNITED STATES

American Standard Brands  
30 Knightsbridge Road, Suite 301  
Piscataway, New Jersey 08854  
Attention: Director of Customer Care  
For residents of the United States,  
warranty information may also be obtained  
by calling the following toll free number:  
(800) 442-1902  
[www.americanstandard.com](http://www.americanstandard.com)

#### CANADA

LIXIL Canada, Inc.  
5900 Avebury Rd.  
Mississauga, Ontario  
Canada L5R 3M3  
Toll Free: (800) 387-0369  
[www.americanstandard.ca](http://www.americanstandard.ca)

#### MEXICO

American Standard B&K Mexico  
S. de R.L. de C.V.  
Via Morelos #330  
Col. Santa Clara  
Ecatepec 55540 Edo. Mexico  
Toll Free: 01-800-839-1200  
[www.americanstandard.com.mx](http://www.americanstandard.com.mx)

### PLEASE COMPLETE AMERICAN STANDARD WARRANTY REGISTRATION PROCESS AND SAVE THIS WARRANTY INFORMATION

**IMPORTANT:** Registration of the shower doors must be completed for this warranty to become effective. Your registration will make it easier to contact you in the event of a product recall.\*

**INSTRUCTIONS:** Register your shower doors at [www.americanstandard.com](http://www.americanstandard.com). Please save your proof of purchase (sale receipt). If you need assistance or do not have access to our website, please contact American Standard Customer Care at: (800) 442-1902. An American Standard representative will assist in completing the warranty registration.

\*In California, your warranty rights remain intact even if you do not complete the registration process.

**THIS WARRANTY IS NOT TRANSFERABLE FROM ORIGINAL CONSUMER PURCHASER.**

*American Standard*

# TELL US WHAT YOU THINK!



Please leave us a product review or story at **[americanstandard.com/reviews](https://americanstandard.com/reviews)**



## Great Tub

03/13/2018 06:52:29 CDT American Standard Bathtubs Saver 60 Inch by 34 Inch Integral Apron Bathtub, Left Hand Drain

Love the tub. It is very roomy and would definitely buy it again. Our old tub cracked so we got this one to replace it. This one feels like it is more durable and not as flimsy as the last one.

Register your warranty and sign up for an idea-filled newsletter at **[americanstandard.com/warranty](https://americanstandard.com/warranty)**.

Find installation videos at **[youtube.com/americanstandard](https://youtube.com/americanstandard)**.

## ≡ WANT MORE INFO?

For questions or help call us at **800-442-1902**,  
or visit **[americanstandard.com](https://americanstandard.com)**