

**Reliant® Drop-In Counter Sinks**

- ☐ **0476228** Faucet holes on 4" (102 mm) centers
- ☐ **0475220** Faucet holes on 8" (203 mm) centers
- ☐ **0475247** Faucet holes center hole only (CHO)

- Self-rimming oval drop-in sinks
- Tapered edges for style
- Front overflow
- Supplied with counter template
- Made of vitreous china

**Nominal Dimensions:**

20-3/8" x 17-3/8"  
(518 x 441 mm)

**Bowl sizes:**

16" (406 mm) wide  
10" (254 mm) front-to-back  
5-5/8" (143 mm) deep

**Compliance Certifications - Meets or Exceeds  
the Following Specifications:**

- ASME A112.19.2M for Vitreous China Fixtures
- CAN/CSA B45 series

**To Be Specified:**

- ☐ Color: ☐ White
- ☐ Faucet\*:
- ☐ Faucet Finish:
- ☐ Supplies:
- ☐ 1-1/4" Trap:

\* See faucet section for additional models available



**0476228** Faucet holes on 4" (102 mm) centers



**0475220** Faucet holes on 8" (203 mm) center



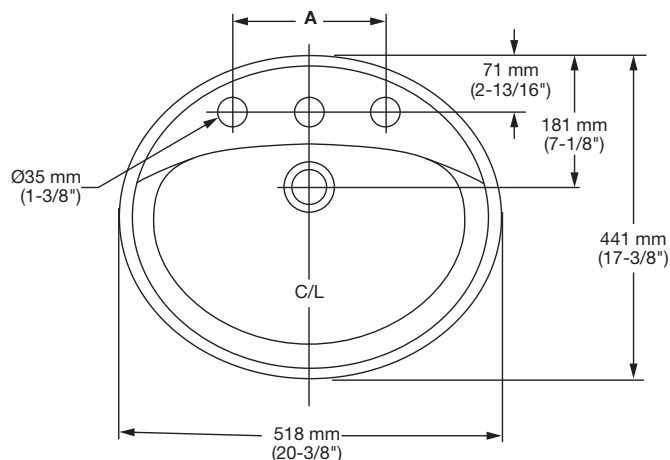
**0475247** Faucet holes center hole only (CHO)



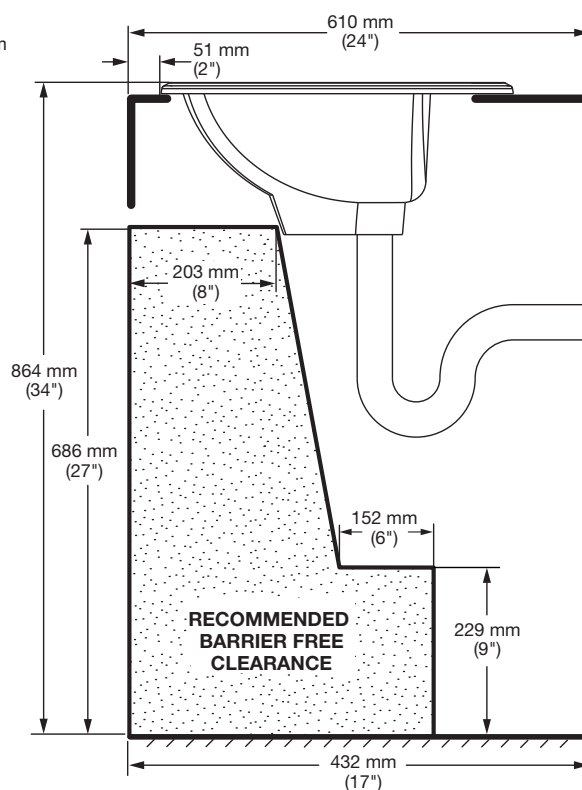
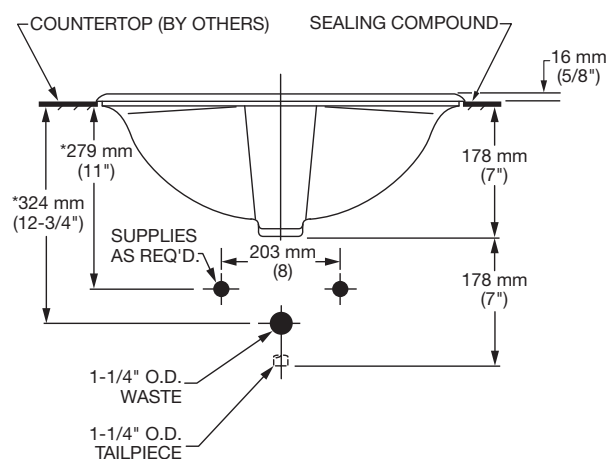
**MEETS THE AMERICANS WITH DISABILITIES ACT GUIDELINES  
AND ICC ANSI A117.1 ACCESSIBLE AND USEABLE BUILDINGS  
AND FACILITIES - CHECK LOCAL CODES.**

When top of sink is installed 34" (864 mm) from finished floor.  
Refer to rough-in diagram for full details.

**SEE REVERSE FOR ADDITIONAL  
ROUGHING-IN DIMENSIONS**



FITTING	A
CENTERSET	102 mm (4")
SPREAD	203 mm (8")



**NOTES:**

INSTALL PRODUCT ACCORDING TO THE INSTALLATION INSTRUCTIONS. COUNTERTOP MANUFACTURER OR CUTTER MUST USE CUTOUT TEMPLATE PROVIDED WITH PRODUCT OR A CURRENT ONE PROVIDED BY AMERICAN STANDARD. AMERICAN STANDARD IS NOT RESPONSIBLE FOR CUTOUT ERRORS WHEN THE INCORRECT TEMPLATE IS USED. DIMENSIONS SHOWN FOR LOCATION OF SUPPLIED AND "P" TRAP ARE SUGGESTED. FITTINGS NOT INCLUDED WITH FIXTURE AND MUST BE ORDERED SEPARATELY. SEALING COMPOUND SUPPLIED BY OTHERS.

**IMPORTANT:** Dimensions of fixtures are nominal and may vary within the range of tolerances established by ANSI Standard A112.19.2. These measurements are subject to change or cancellation