

ROXALYN® WALL-HUNG LAVATORY

- Wall-hung sink
- Vitreous china
- Front overflow
- Designed for off-wall installation with 2" clearance from wall

Faucet holes on 203mm (8") centers:

- ☐ **0194.431** For concealed arms support, extra right hole (Custom modification with leadtime)
- ☐ **0194.456** For concealed arms support, extra left hole (Custom modification with leadtime)

Nominal Dimensions:

508 x 457mm
(20" x 18")

Bowl sizes:

362mm (14-1/4") wide
273mm (10-3/4") front to back
178mm (7") deep

Compliance Certifications -

Meets or Exceeds the Following Specifications:

- ASME A112.19.2 for Vitreous China Fixture



Shown with 7401.172H Amarilis Heritage faucet
(not included)

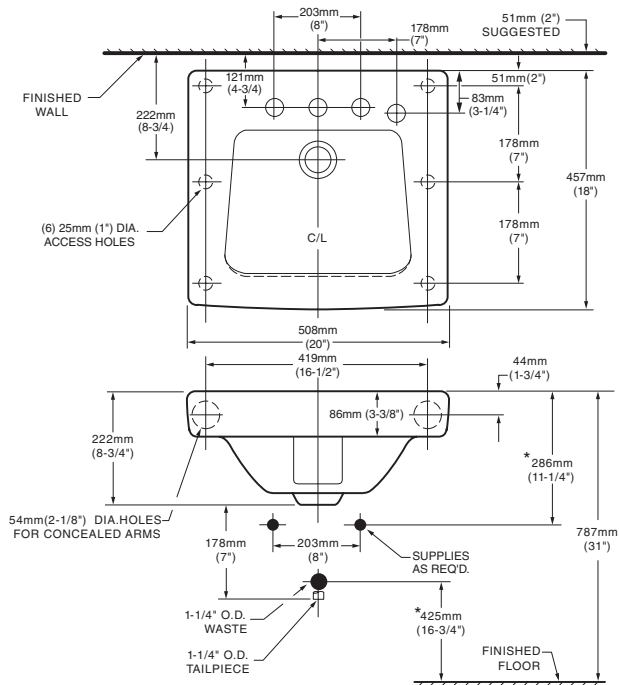
SEE REVERSE FOR ROUGHING-IN DIMENSIONS

To Be Specified:

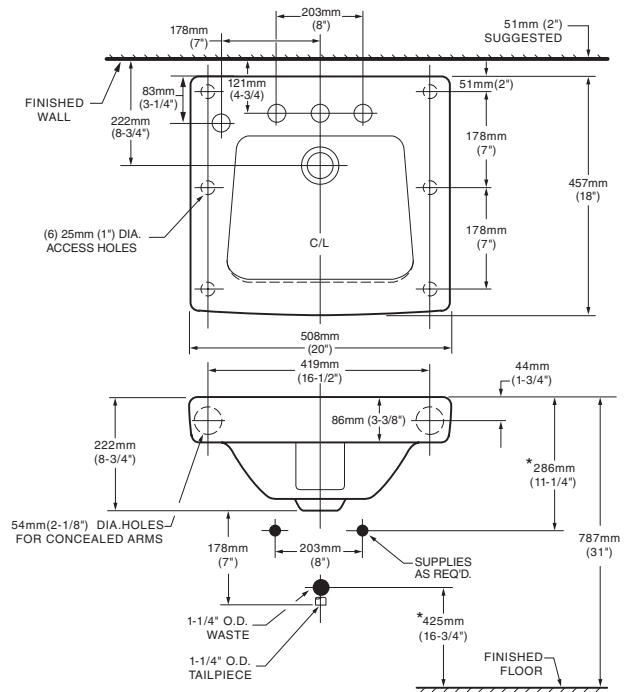
- ☐ Color: ☐ White
- ☐ Faucet*:
- ☐ Faucet Finish:
- ☐ Supplies:
- ☐ 1-1/4" Trap:
- ☐ Nipple:
- ☐ Bracket Support (if required):
 - ☐ 485742-600: 381mm (15") painted bracket
- ☐ Concealed Arms Support (by others):

* See faucet section for additional models available

0194.431 CONCEALED ARMS SUPPORT VARIATIONS



0194.456 CONCEALED ARMS SUPPORT VARIATIONS



NOTES:

* DIMENSIONS SHOWN FOR LOCATION OF SUPPLIES AND "P" TRAP ARE SUGGESTED.
FITTINGS NOT INCLUDED AND MUST BE ORDERED SEPARATELY.
PROVIDE SUITABLE REINFORCEMENT FOR ALL WALL SUPPORTS.
CONCEALED ARMS SUPPORT & EXPOSED BRACKET SUPPORT TO BE FURNISHED BY OTHERS.

IMPORTANT: Dimensions of fixtures are nominal and may vary within the range of tolerances established by ANSI Standard A112.19.2. These measurements are subject to change or cancellation. No responsibility is assumed for use of superseded or voided pages.