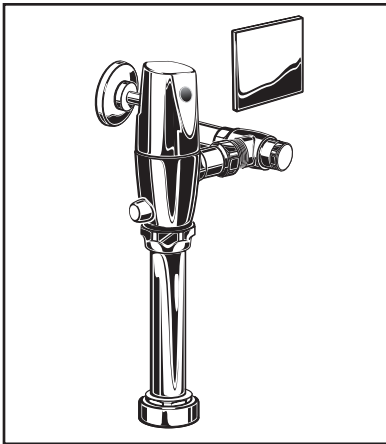




# SELECTRONIC® SENSOR-OPERATED TOILET FLUSH VALVE, DUAL FLUSH 1.28/1.1 GPF HARD-WIRED AC POWERED



## GENERAL DESCRIPTION:

Exposed, sensor-operated Selectronic® Toilet Flush Valve for floor-mounted or wall-hung 1-1/2" top spud bowls, Dual Flush 1.28/1.1 gpf. Hard-Wired AC powered.

Inlet includes 1" sweat solder kit and angle stop with back flow protection and vandal-resistant cap.

Outlet includes 1-1/2" high back pressure vacuum breaker with spud coupling and flange.

## PRODUCT FEATURES:

- **Universal Input Voltage:** 100-240 VAC, 50/60 Hz
- **Optional Chrome Cover Plate:** Only required if AC transformer must be installed from the front
- **Self-Cleaning Piston** with integral wiper spring significantly reduces clogging and maintenance
- **Selectronic® Proximity System** with universal sensor provides hygienic, "hands free" operation
- **State-of-the-Art Electronics** prevent ghost flushing
- **Dezincification Resistant** semi-red brass alloy
- **Fully Mechanical Manual Override Button** can flush the valve without power
- **Fail-Safe:** Valve automatically closes upon loss of power or water pressure and does not need to be reset
- **Adjustable Sanitary Flush** cleans the fixture & maintains the trap seal.
- **Stadium Feature:** Valve automatically switches to water savings mode during periods of heavy usage
- **Chemical Resistant EPDM Seals** for extended life
- **High Back Pressure Vacuum Breaker**
- **Adjustable Tailpiece**
- **Range can be adjusted manually or with optional remote control**
- **No external volume adjustment.**
- **Can be installed left or right handed**

## MODEL NUMBER:

### ☐ 6067.721.002 HARD-WIRED AC POWERED:

Includes Class 2 UL certified universal hard-wired AC transformer (electrical box by others).

### ☐ 6068.721.002 MULTI-AC POWERED:

Includes 10' extension cable and Y-connector. One transformer can power up to 15 faucets and/or flush valves in a daisy chain configuration  
**TRANSFORMER NOT INCLUDED.**

## DUAL FLUSH OPERATION

User in detection zone < 60 seconds, 1.1 gallon flush  
User in detection zone ≥ 60 seconds, 1.28 gallon flush

## OPERATING PRESSURE:

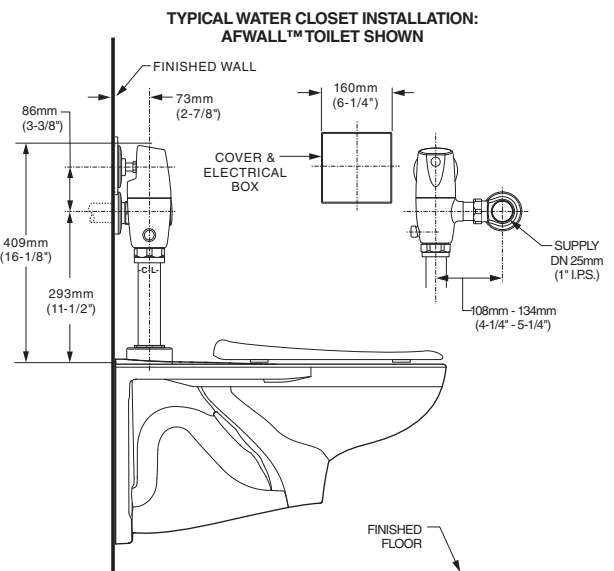
Overall Range: 20-125 psi\*\*

Recommended: 25 psi (flowing)-80 psi (static)

\*\* Water pressure over 80 psi is not recommended for most plumbing fixtures.

## FLOW REQUIREMENT:

25gpm (94.6 L/min.)



MEETS THE AMERICANS WITH DISABILITIES ACT GUIDELINES  
AND ANSI A117.1 REQUIREMENTS FOR ACCESSIBLE AND  
USABLE BUILDING FACILITIES-CHECK LOCAL CODES

## RECOMMENDED SPECIFICATION:

Electronic, sensor activated toilet flush valve shall feature self-cleaning piston valve with integral wiper spring in refill orifice to prevent clogging. Powered by Class 2 UL certified hard-wired AC transformer with universal input voltage of 100 - 240 VAC, 50/60 HZ. Includes a fully mechanical manual override that can flush the valve without power. Includes semi-red brass valve body and metal cover with chrome finish. Includes angle stop with back-flow protection & vandal-resistant cap. Sweat solder kit and high back pressure vacuum breaker also included. Dual Flush 1.28/1.1 gpf (4.8/4.2 Lpf) flush valve shall be American Standard Model # 606\_721.002.

# SELECTRONIC® SENSOR-OPERATED TOILET FLUSH VALVE, DUAL FLUSH 1.28/1.1 GPF HARD-WIRED AC POWERED

## LISTINGS:

- ASSE 1037
- ANSI/ASME A112.19.2
- ADA Compliant

**CAUTION:** Use only American Standard supplied transformers and cable sets. Using non-AS supplied cables, or cutting, splicing or modifying any components will void the warranty.

## Roughing-in Dimensions

