

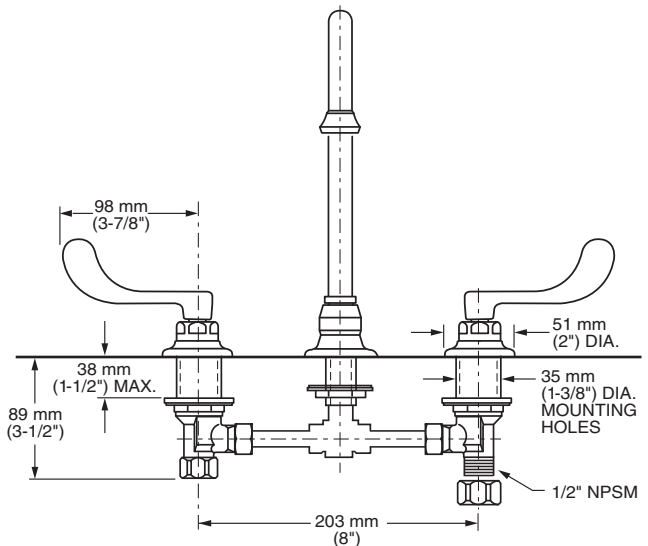
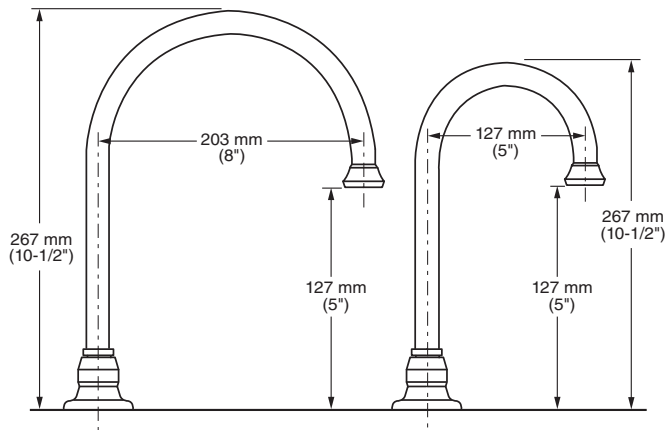
MONTERREY® 1.5 GPM ROSE SPRAY TWO-HANDLE 8" WIDESPREAD LAVATORY FAUCET WITH RIGID/SWIVEL GOOSENECK SPOUT



6540.171 Shown

MODEL NUMBER:

- ❑ **6540.171 Widespread Lavatory with Rose Spray**
1.5 gpm Pressure compensating rose spray. Field-convertible rigid/swivel gooseneck spout with 5" reach. Vandal-resistant wrist blade handles. LESS drain and pop-up hole.
- ❑ **6540.179 Widespread Lavatory with Rose Spray**
1.5 gpm Pressure compensating rose spray. Field-convertible rigid/swivel gooseneck spout with 8" reach. Vandal-resistant wrist blade handles. LESS drain and pop-up hole.



GENERAL DESCRIPTION:

Durable cast brass construction. Cast brass valve bodies with 8" rigid copper connection with compression fittings. 1/2" male threaded inlet shanks with brass coupling nuts. 1/4 turn ceramic disc valve cartridges. Field-convertible rigid/swivel gooseneck spout. Vandal-Resistant Wrist Blade handles with blue & red color indexes. 1.5 gpm/5.7 L/min. maximum flow rate.

PRODUCT FEATURES:

Rose Spray Outlet: Multi-stream spray outlet. Pressure compensating design provides a constant water flow of 1.5 gpm throughout the pressure range.

Solid Brass Construction: Durable - Excellent in high use applications. Ideal for prolonged contact with water.

Ceramic Disc Valve Cartridge: Assures a lifetime of drip-free performance.

Field-Convertible Rigid/Swivel Spout: Easily converted in the field.

Lead Free: Faucet contains $\leq 0.25\%$ total lead content by weighted average.

SUGGESTED SPECIFICATION

Two-handle widespread lavatory faucet shall feature cast brass valve bodies with 8" rigid copper connection. Shall feature water-conserving 1.5 gpm/5.7 L/min. pressure compensating rose spray. Vandal-Resistant wrist blade handles. Shall also feature 1/4 turn washerless ceramic disc valve cartridges. Shall also feature field-convertible rigid/swivel spout. Fitting shall be American Standard Model # 6540.17_.002.

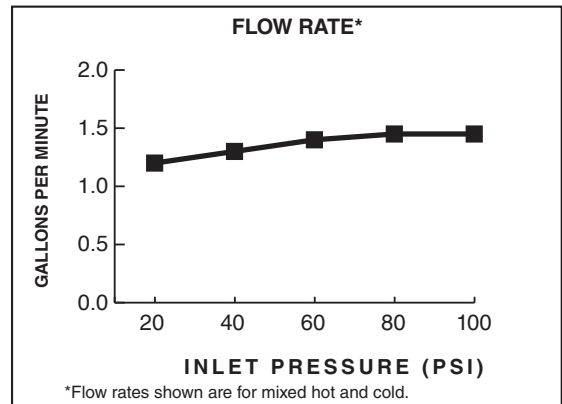


MONTERREY® 1.5 GPM ROSE SPRAY TWO-HANDLE 8" WIDESPREAD LAVATORY FAUCET WITH RIGID/SWIVEL GOOSENECK SPOUT

CODES AND STANDARDS

These products meet or exceed the following codes and standards:

ANSI 117.1
ASME A112.18.1
CSA B125.1
NSF 61/Section 9 and Annex G



Product Number	Description	Finish
		Polished Chrome
		002
6540.171	Widespread lavatory faucet with field-convertible rigid/swivel gooseneck spout with 5" reach. 1.5 gpm/5.7 L/min pressure compensating rose spray. Vandal-resistant wrist blade handles. LESS drain & pop-up hole.	
6540.179	Widespread lavatory faucet with field-convertible rigid/swivel gooseneck spout with 8" reach. 1.5 gpm/5.7 L/min pressure compensating rose spray. Vandal-resistant wrist blade handles. Grid strainer drain.	



Meets the American Disabilities Act Guidelines and **ANSI A117.1** Requirements for accessible and usable building facilities - check local codes

PART OF **LIXIL**