

SURGEON'S SCRUB SINK

- Vitreous china
- Low front rim
- Wall hanger
- For wall hanger (included) or for exposed bracket support [381mm (15") painted brackets available].

- ❑ **9047.044** Faucet holes on 203mm (8") centers
- ❑ **9047.093** Single center faucet hole (Illustrated)

Nominal Dimensions:

711 x 559mm
(28" x 22")

Compliance Certifications -

Meets or Exceeds the Following Specifications:

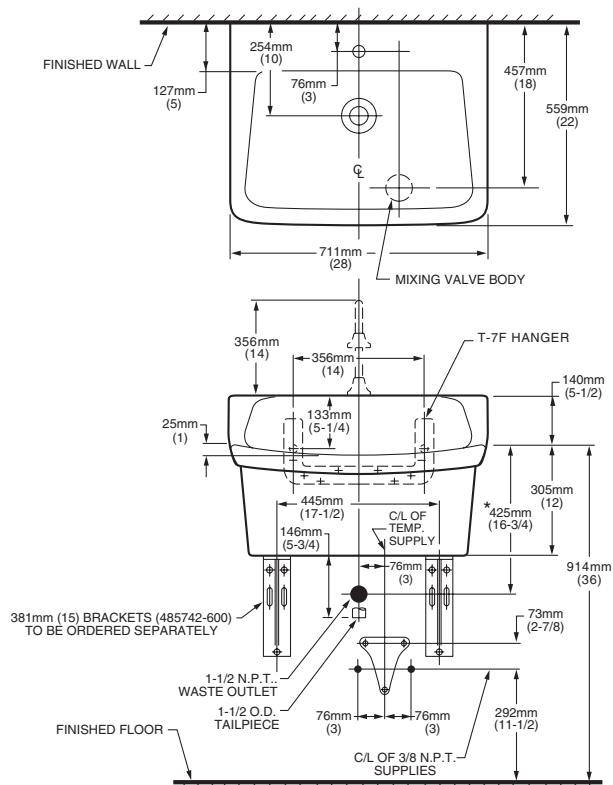
- ASME A112.19.2 for Vitreous China Fixtures



To Be Specified:

- ☐ Gooseneck Spout: 7522.055
- ☐ Knee Action Mixing Valve: 7676.029
- ☐ Grid Drain: 7716.020
- ☐ Trap:
- ☐ Nipple:
- ☐ Painted Bracket Support: 485742-600 (2 req'd)
- ☐ Flex Tempered Supply (by others):

Available in White Only



NOTES:

* DIMENSION SHOWN FOR LOCATION OF "P" TRAP IS SUGGESTED.
15" PAINTED SUPPORT BRACKETS 485742-600 AVAILABLE AND MUST
BE ORDERED SEPARATELY.
PROVIDE SUITABLE REINFORCEMENT FOR ALL WALL SUPPORTS.
FITTINGS NOT INCLUDED AND MUST BE ORDERED SEPARATELY.

IMPORTANT: Dimensions of fixtures are nominal and may vary within the range of tolerances established by ANSI Standard A112.19.2. These measurements are subject to change or cancellation. No responsibility is assumed for use of superseded or voided pages.