



T010.502 Bath/Shower Trim Shown

MODEL NUMBER:

TRIM KITS:

- ❑ **T010.502 Green Tea BATH/SHOWER Trim Kit**
Metal lever handle. LESS valve body.
- ❑ **T010.501 Green Tea SHOWER ONLY Trim Kit**
Metal lever handle. LESS valve body.
- ❑ **T010.500 Green Tea VALVE ONLY Trim Kit**
Metal lever handle. LESS valve body.

***For use with R120 Series Pressure Balance Valves.
See reverse side for available Rough Valves.***

GENERAL DESCRIPTION:

SHOWERHEAD

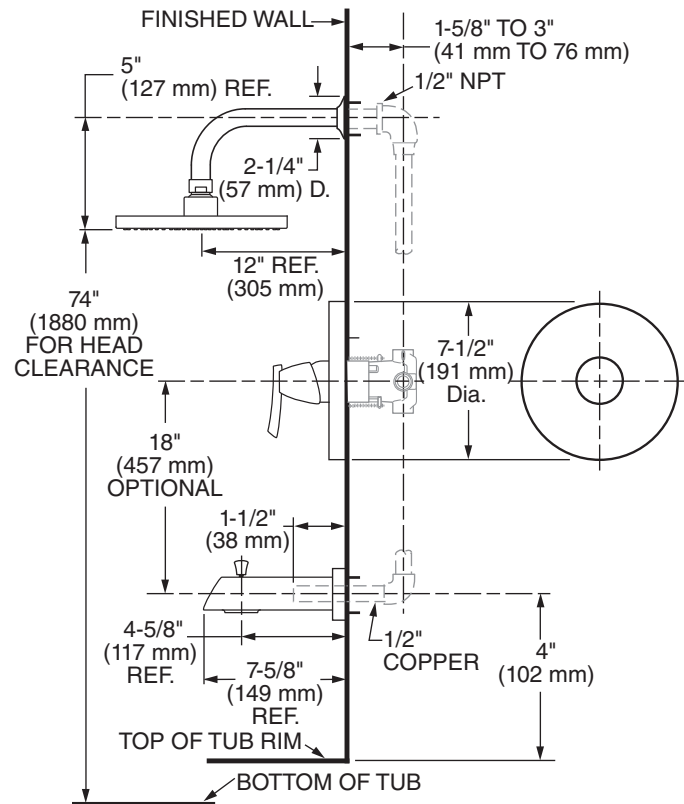
6-3/4" Brass rain showerhead at maximum 2.5 gpm/9.5 L/min. flow rate. 12" Brass right angle shower arm.

WALL TUB SPOUT

Metal slip-on diverter spout.

WALL VALVE TRIM

Available with metal lever handle.
Metal wall escutcheon.



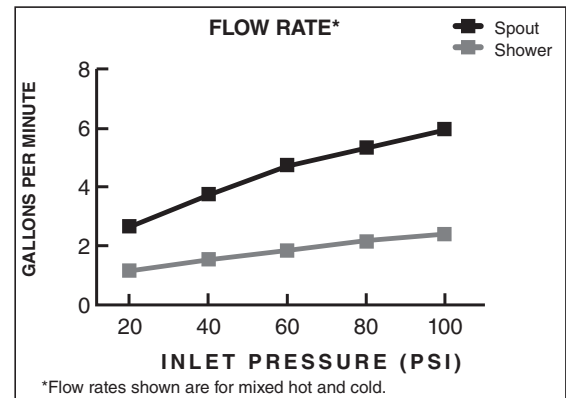
SUGGESTED SPECIFICATION

Bath/shower fitting shall feature 6-3/4" brass rain showerhead with Max. 2.5 gpm/9.5 L/min. flow rate. Fitting shall be: American Standard Trim Kit Model # T555.50_._._ and Valve Body Model # R12_.

CODES AND STANDARDS

These products meet or exceed the following codes and standards:

ANSI A117.1
ASSE 1016
ASME A112.18.1
CSA B125.1



TRIM KITS *	Product Number	Description	* TRIM & ROUGH MUST BE ORDERED SEPARATELY.		Finish Options	
					Polished Chrome	PVD Stainless Steel
					002	075
	T010.502	Bath/Shower Trim Kit. Metal lever handle. LESS valve body.				
	T010.501	Shower Only Trim Kit. Metal lever handle. LESS valve body.				
	T010.500	Valve Trim Only. Metal lever handle. LESS valve body.				

ROUGH VALVE BODIES	Product Number	Description
	R121	Rough Valve Body less trim. Universal inlets/outlets.
	R121SS	Rough Valve Body less trim. Universal inlets/outlets with Screwdriver Stops.
	R120	Rough Valve Body less trim. Direct sweat inlets/outlets.
	R120SS	Rough Valve Body less trim. Direct sweat inlets/outlets with Screwdriver Stops.
	R125	Rough Valve Body less trim. Female Thread inlets/outlets.
	R125SS	Rough Valve Body less trim. Female Thread inlets/outlets with Screwdriver Stops.
	R127	Rough Valve Body less trim. PEX inlets/universal outlets for Crimp Ring PEX system (ASTM F1807).
	R127SS	Rough Valve Body less trim. PEX inlets/universal outlets for Crimp Ring PEX system (ASTM F1807) with Screwdriver Stops.
	R128	Rough Valve Body less trim. PEX inlets/universal outlets for Cold Expansion PEX system (ASTM F1960).
	R128SS	Rough Valve Body less trim. PEX inlets/universal outlets for Cold Expansion PEX system (ASTM F1960) with Screwdriver Stops.
	R129	Rough Valve Body less trim. CPVC inlets/universal outlets.
	R129SS	Rough Valve Body less trim. CPVC inlets/universal outlets with Screwdriver Stops.



Meets the American Disabilities Act Guidelines and **ANSI A117.1** Requirements for the physically challenged.