

SKYLINE® WASHSTAND

☐ 9425.200

- Classically styled wood sink washstand
- Features patented Ready to Unfold (RTU) design
- Constructed of solid poplar and hardwood veneers
- Uses Retrospect® Collection pedestal top, faucet holes on 8" centers
- Washstand features integral side towel bars and complimentary storage basket

Separate Components:

- ☐ 0282.008 Console/Pedestal top
8" (203mm) centers
- ☐ 9425.200 Skyline Washstand

Nominal Dimensions with Sink:

27" x 14" x 35-3/4"
(648 x 356 x 870mm)

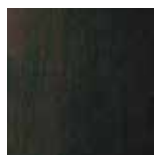
Compliance Certifications -

Meets or Exceeds the Following Specifications:

- ASME A112.19.9M for Non-Vitreous Ceramic Fixtures
- CAN/CSA B45 Series

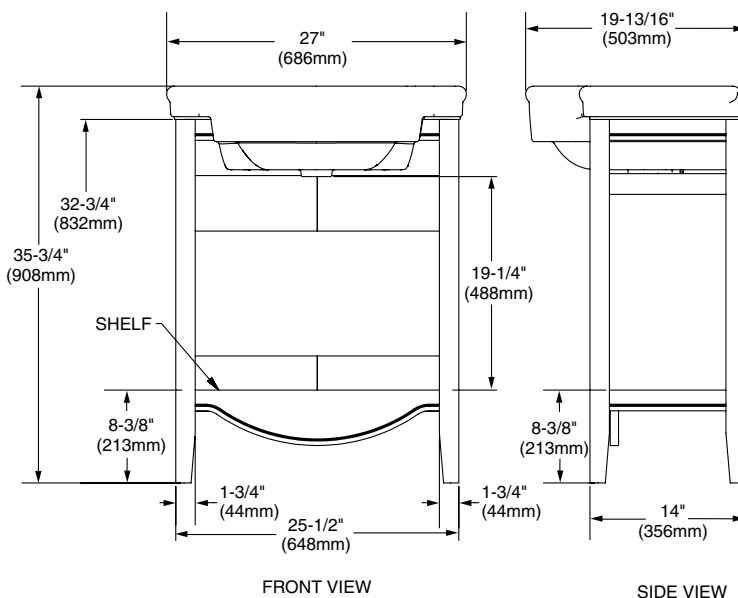
To Be Specified:

- ☐ Color:
 - ☐ Pedestal Top: White 020 only
 - ☐ Skyline Washstand: Dark Chocolate 322 only



322

Dark Chocolate



NOTES:

* DIMENSIONS SHOWN FOR LOCATION OF SUPPLIES AND "P" TRAP ARE SUGGESTED.

▼ ANCHOR SCREWS FOR LAVATORY AND PEDESTAL NOT INCLUDED.

- FITTINGS NOT INCLUDED AND MUST BE ORDERED SEPARATELY. PROVIDE SUITABLE REINFORCEMENT FOR ALL WALL SUPPORTS.

IMPORTANT: Dimensions of fixtures are nominal and may vary within the range of tolerances established by ANSI Standard A112.19.9M. These measurements are subject to change or cancellation. No responsibility is assumed for use of superseded or voided pages.