

**H2Option® ADA Dual Flush
Right Height® Elongated Toilet**

- 2886204**
 - Vitreous china
 - Combination bowl and tank, less seat
 - ADA compliant configuration with left hand trip lever
 - Ultra high efficiency
 - Full Flush (1.28 gpf/4.8 Lpf)
 - Partial Flush (0.92 gpf/3.4 Lpf)
 - Elongated siphon action bowl with direct-fed jet
 - 16-1/2" (419 mm) rim height
 - Meets EPA WaterSense® criteria
 - MaP PREMIUM listed
 - Includes EverClean® antimicrobial surface
 - PowerWash® rim scrubs bowl with each flush
 - 12" (305mm) rough-in
 - Fully glazed 2" (51 mm) Trapway
 - Generous 9" x 8" (229 x 203 mm) water surface area
 - Chrome plated actuator
 - Sanitary bar on bowl
 - 2 color matched bolt caps
 - Five year warranty

- 2886205** Same as above, except with right hand trip lever

Separate Component Parts:

- 3705.216** Right Height elongated bowl
- 4133A204** Tank with left hand trip lever
- 4133A205** Tank with right hand trip lever

Nominal Dimensions:

29-3/4" x 15" x 31-1/2"
(756 x 380 x 800 mm)

Fixture only, seat and supply by others

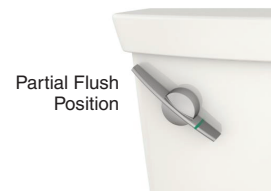
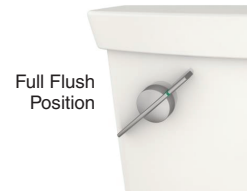
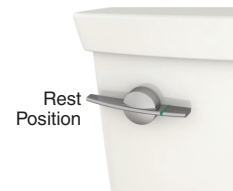
Compliance Certifications -

Meets or Exceeds the Following Specifications:

- ASME A112.19.2/CSA B45.1 for Vitreous China Fixtures
- CALGreen and California Energy Commission (CEC) Compliant
- US EPA WaterSense® criteria for UHETs

To Be Specified:

- Color: White
- Seat: American Standard #5257A.65MT Easy Lift and Clean Elongated Seat with Cover and Slow Close hinges
- Alternate Seat:
- Supply with stop:



Trip Lever Operation

To select a Full Flush, push the Long Paddle fully and release.

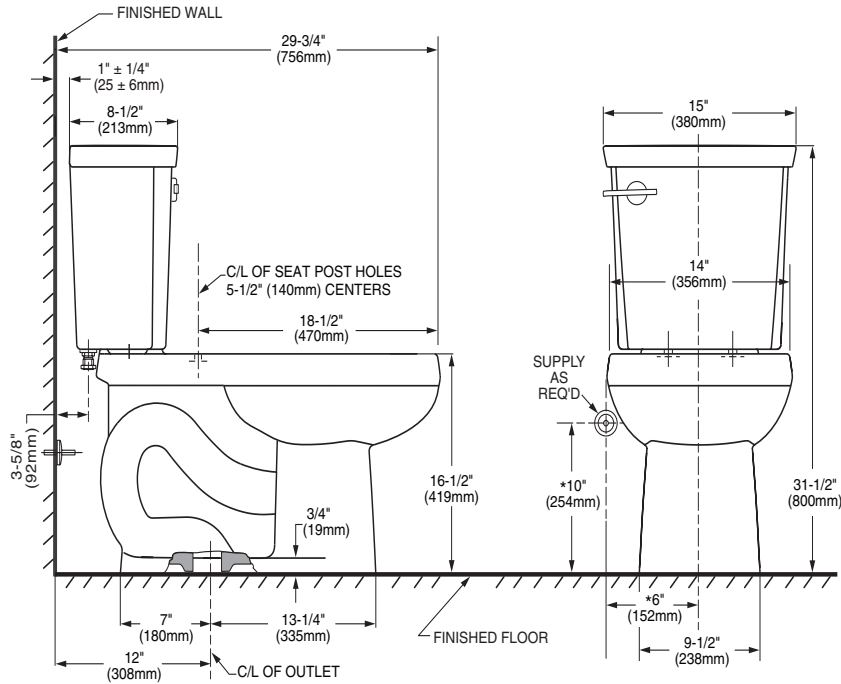
To select a Partial Flush, push the Short Paddle with Green Stripe fully and release.

SEE REVERSE FOR ROUGHING-IN DIMENSIONS AND PRODUCT SPECIFICATIONS



MEETS THE AMERICANS WITH DISABILITIES ACT GUIDELINES AND ICC ANSI A117.1 REQUIREMENTS FOR ACCESSIBLE AND USABLE BUILDING FACILITIES-CHECK LOCAL CODES.





NOTES:

THIS COMBINATION IS DESIGNED TO ROUGH-IN AT A MINIMUM DIMENSION OF 305MM (12") FROM FINISHED WALL TO C/L OF OUTLET.
* DIMENSION SHOWN FOR LOCATION OF SUPPLY IS SUGGESTED.
SUPPLY NOT INCLUDED WITH FIXTURE AND MUST BE ORDERED SEPARATELY.

IMPORTANT: Dimensions of fixtures are nominal and may vary within the range of tolerance established by ANSI Standard A112.19.2
These measurements are subject to change or cancellation. No responsibility is assumed for use of superseded or voided pages.