

**TOWN SQUARE® CONCEALED TRAPWAY
RIGHT HEIGHT® ELONGATED TOILET WITH SEAT**

- ☐ **2817.128**
 - **LXP® (Luxury Performance) toilet**
 - Combination bowl and tank, with seat
 - 12" (305 mm) rough-in
 - Right Height elongated siphon action bowl with smooth-sided, concealed trapway
 - High efficiency, ultra-low consumption (1.28 gpf/4.8 Lpf), **utilizes 20% less water**
 - **Meets EPA WaterSense® criteria**
 - EverClean® surface inhibits the growth of stain- and odor-causing bacteria, mold, and mildew on the surface
 - Classic American traditional styling
 - PowerWash® rim scrubs bowl with each flush
 - 16-1/2" (419 mm) rim height for accessible applications
 - 2-1/8" (54 mm) trapway
 - 3" (76 mm) flush valve
 - Chrome trip lever matches Town Square faucets and accessories
 - Includes design-matched Duroplast™ slow-close seat and cover with easy lift-off feature for simple removal and reattachment for cleaning
 - Two color-matched bolt hole covers
 - 10-year warranty
 - **Design coordinates with Town Square® suite of fixtures and faucets**
 - Best 1,000g MaP Flush score**
- ☐ **2817.813** Same as above except trip lever on right side
- ☐ **3071.000** Right Height Elongated Bowl
- ☐ **4216.128** Tank
- ☐ **5024A.65G** Preferred Seat: Transitional Elongated Luxury Seat

Nominal Dimensions:

756 x 390 x 791mm
(29-3/4" x 15-1/4" x 31-1/8")

Fixture and seat only, supply by others

Alternate Tank Configuration Available:

- ☐ **4216.813** Tank complete with trip lever located on right side

Compliance Certifications -

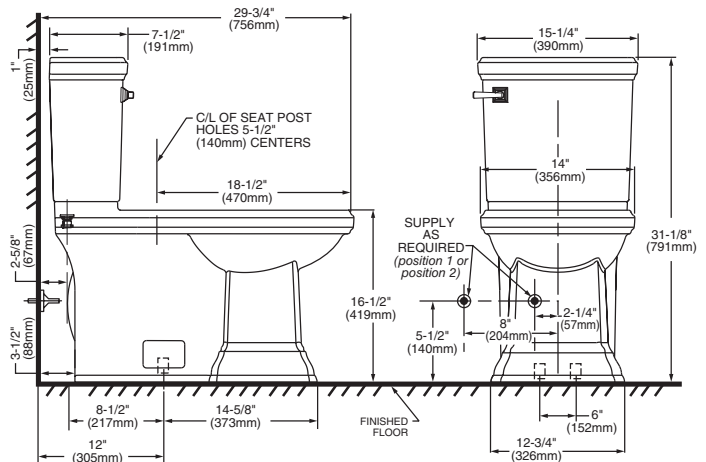
Meets or Exceeds the Following Specifications:

- ASME A112.19.2/CSA B45.1
- US EPA WaterSense® Specification for HETs

To Be Specified:

- ☐ Color: ☐ White ☐ Linen
- ☐ Supply with Stop:

** Maximum Performance (MaP) testing performed by IAPMO R&T Lab. MaP Report conducted by Gauley Associates Ltd. and Koeller and Company.



IMPORTANT: Water supply on the wall is required at 2-1/4" or 8" from centerline of the toilet (see rough-in). First suggested position is hidden behind the toilet. The geometry of the toilet gives space for this installation. The second suggested position is next to the toilet. Between these two positions, the space for the supply between wall and toilet is limited to 3-1/2". In this case, check your supply and hose dimensions.

NOTES:

THIS COMBINATION IS DESIGNED TO ROUGH-IN AT A MINIMUM DIMENSION OF 305MM (12") FROM FINISHED WALL TO C/L OF OUTLET. * DIMENSIONS SHOWN FOR LOCATION OF SUPPLY ARE SUGGESTED. SUPPLY NOT INCLUDED WITH FIXTURE AND MUST BE ORDERED SEPARATELY.

IMPORTANT: Dimensions of fixtures are nominal and may vary within the range of tolerance established by ANSI Standard A112.19.2. These measurements are subject to change or cancellation. No responsibility is assumed for use of superseded or voided pages.



**MEETS THE AMERICANS WITH DISABILITIES ACT GUIDELINES
AND ICC ANSI A117.1 REQUIREMENTS FOR ACCESSIBLE AND
USABLE BUILDING FACILITIES-CHECK LOCAL CODES.**



EVERCLEAN®



EPA
WATERSENSE®
CERTIFIED



WATER
EFFICIENT