

CHAMPION® 4 ELONGATED TOILET

- ☐ **2018.214**
 - Vitreous china
 - EverClean® surface inhibits the growth of stain- and odor-causing bacteria, mold, and mildew on the surface
 - Low-consumption (6.0 Lpf/1.6 gpf)
 - Features **Champion® 4 Flushing System** performance platform
 - 4" non-adjustable, piston action Accelerator™ flush valve
 - Elongated siphon action jetted bowl
 - 2-3/8" fully-glazed trapway
 - Speed Connect® tank/bowl coupling system
 - Chrome-plated trip lever
 - Sweeping pier on bowl
 - 100% factory flush tested
 - 2 bolt caps
 - 10 year warranty

☐ **3121.016** Bowl

☐ **4266.014** Tank

Nominal Dimensions:

772 x 464 x 797mm (30-3/8" x 18-1/4" x 31-3/8")

Fixture only, seat and supply by others

Alternate Tank Configurations Available:

- ☐ **4266.504** Tank complete with Aquaguard Liner
- ☐ **4266.604** Tank complete with tank cover locking device
- ☐ **4266.704** Tank complete with Aquaguard Liner and tank cover locking device
- ☐ **4266.804** Tank complete with trip lever located on right side
- ☐ **4266.904** Tank complete with tank cover locking device and trip lever located on right side
- ☐ **4266.954** Tank complete with Aquaguard Liner, tank cover locking device, and trip lever on right side

Compliance Certifications -

Meets or Exceeds the Following Specifications:

- ASME A112.19.2M for Vitreous China Fixtures - includes Flush Performance, Ball Pass Diameter, Trap Seal Depth and all Dimensions
- Los Angeles Department of Water and Power Supplementary Purchase Specification for Non-Adjustability - July, 2003 revision



SEE REVERSE FOR ADDITIONAL ROUGHING-IN DIMENSIONS

CHAMPION® 4
Flushing System

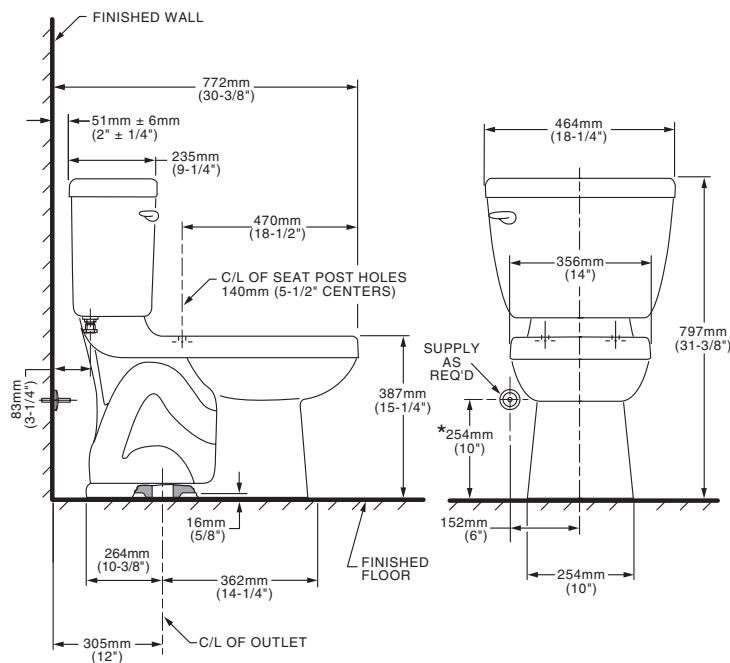
To Be Specified:

- ☐ Color:
 - ☐ White ☐ Bone ☐ Linen
- ☐ Design Matched Seat: #5280.016
- ☐ Alternate Seats:
 - ☐ Champion® Slow Close Elongated #5325.010
 - ☐ Rise & Shine Elongated #5324.019
 - ☐ Rise & Shine Elongated-Open Front #5325.024
 - ☐ EverClean® Elongated Seat with Slow Close Snap-Off Hinges #5321.110
- ☐ Supply with stop:

NOTES:

THIS TOILET IS DESIGNED TO ROUGH-IN AT A MINIMUM DIMENSION OF 305MM (12") FROM FINISHED WALL TO C/L OF OUTLET. SUPPLY NOT INCLUDED WITH FIXTURE AND MUST BE ORDERED SEPARATELY.
* DIMENSION SHOWN FOR LOCATION OF SUPPLY IS SUGGESTED.

IMPORTANT: Dimensions of fixtures are nominal and may vary within the range of tolerances established by ANSI Standard A112.19.2. These measurements are subject to change or cancellation. No responsibility is assumed for use of superseded or voided pages.



CHAMPION® 4
Flushing System

NOTES:

THIS TOILET IS DESIGNED TO ROUGH-IN AT A MINIMUM DIMENSION OF 305MM (12") FROM FINISHED WALL TO C/L OF OUTLET. SUPPLY NOT INCLUDED WITH FIXTURE AND MUST BE ORDERED SEPARATELY.

* DIMENSION SHOWN FOR LOCATION OF SUPPLY IS SUGGESTED.

IMPORTANT: Dimensions of fixtures are nominal and may vary within the range of tolerances established by ANSI Standard A112.19.2. These measurements are subject to change or cancellation. No responsibility is assumed for use of superseded or voided pages.