

**PORTSMOUTH® CHAMPION® 4 ROUND FRONT
RIGHT HEIGHT® TOILET**

☐ **2735.014**

- Vitreous china
- EverClean® surface inhibits the growth of stain- and odor-causing bacteria, mold, and mildew on the surface
- Low-consumption (6.0 Lpf/1.6 gpf)
- Features **Champion® 4 Flushing System** performance platform
- 4" non-adjustable, piston action Accelerator™ flush valve
- 16-1/2" rim height for accessible applications
- Round Front siphon action jetted bowl
- 2-3/8" fully-glazed trapway
- Speed Connect® tank/bowl coupling system
- Chrome-plated trip lever
- Sanitary pier on bowl
- 100% factory flush tested
- 2 bolt caps
- 10 year warranty



☐ **3180.016** Round Front Right Height® Bowl

☐ **4281.014** Tank

Nominal Dimensions:

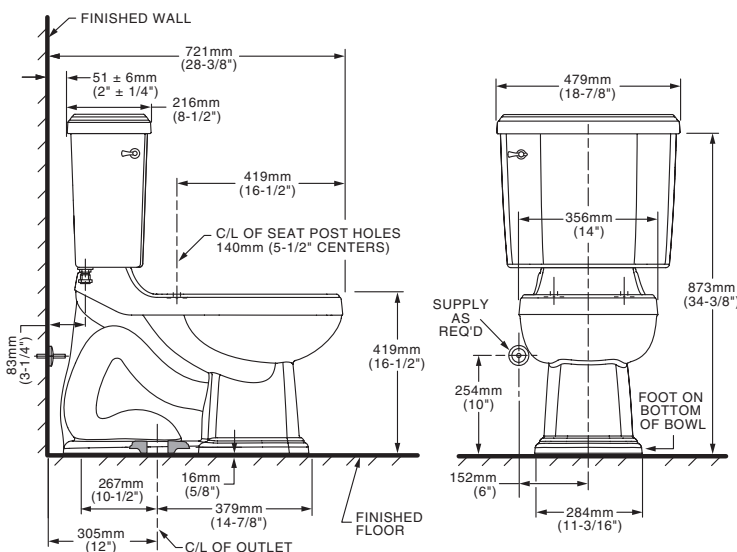
721 x 479 x 873mm
(28-3/8" x 18-7/8" x 34-3/8")

Fixture only, seat and supply by others

Compliance Certifications -

Meets or Exceeds the Following Specifications:

- ASME A112.19.2M for Vitreous China Fixtures - includes Flush Performance, Ball Pass Diameter, Trap Seal Depth and all Dimensions
- Los Angeles Department of Water and Power Supplementary Purchase Specification for Non-Adjustability - July, 2003 revision



NOTES:

THIS TOILET IS DESIGNED TO ROUGH-IN AT A MINIMUM DIMENSION OF 305MM (12") FROM FINISHED WALL TO C/L OF OUTLET. SUPPLY NOT INCLUDED WITH FIXTURE AND MUST BE ORDERED SEPARATELY.

* DIMENSION SHOWN FOR LOCATION OF SUPPLY IS SUGGESTED.

IMPORTANT: Dimensions of fixtures are nominal and may vary within the range of tolerances established by ANSI Standard A112.19.2. These measurements are subject to change or cancellation. No responsibility is assumed for use of superseded or voided pages.

To Be Specified:

- ☐ Color:
 - ☐ White ☐ Bone ☐ Linen
- ☐ Seat: (please specify color)
 - ☐ Champion® Slow Close Round Front #5330.010
 - ☐ Rise & Shine Round Front #5322.011
 - ☐ EverClean® Round Front Seat with Slow Close Snap-Off Hinges #5320.110
- ☐ Supply with stop:

CHAMPION® 4
Flushing System



MEETS THE AMERICANS WITH DISABILITIES ACT GUIDELINES
AND ICC ANSI A117.1 REQUIREMENTS FOR ACCESSIBLE AND
USABLE BUILDING FACILITIES-CHECK LOCAL CODES.