

CADET® 3 ELONGATED 10" ROUGH-IN TOILET

☐ **2383.010**

- Vitreous china
- Low-consumption (6.0 Lpf/1.6 gpf)
- EverClean® surface inhibits the growth of stain- and odor-causing bacteria, mold, and mildew on the surface
- Features the **CADET® 3 Flushing System**
- Elongated siphon action jetted bowl
- Fully-glazed 2-1/8" trapway with 2" ball pass
- Generous 9" x 8" water surface area
- Close-coupled tank with flat tank cover for superior storage
- Oversized 3" flush valve with chemical resistant flapper
- Chrome trip lever
- Speed Connect® tank-to-bowl coupling system
- Sanitary dam on bowl with four point tank stabilization
- 2 color-matched bolt caps
- 100% factory flush tested
- 5 year warranty

☐ **3014.016** Elongated Bowl

☐ **3014.001** Elongated Universal Bowl

☐ **4019.016** Tank

Nominal Dimensions:

724 x 432 x 737mm (28-1/2" x 17" x 29")

Fixture only, seat and supply by others

Alternative Tank Configurations Available:

- ☐ **4019.600** Tank complete with tank cover locking device
- ☐ **4019.800** Tank complete with trip lever on right side
- ☐ **4019.900** Tank complete with tank cover locking device and trip lever on right side

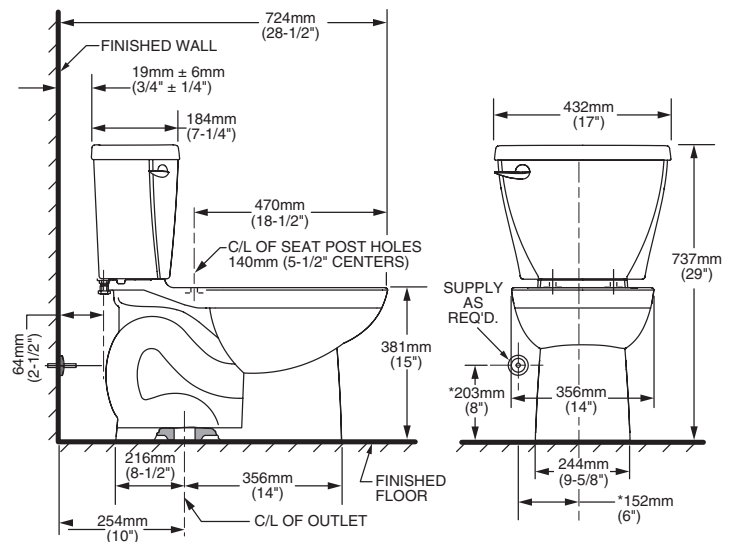
Compliance Certifications -

Meets or Exceeds the Following Specifications:

- ASME A112.19.2-2008/CSA B45.1-08 for Vitreous China Fixtures

To Be Specified:

- ☐ Color: ☐ White ☐ Bone ☐ Linen
- ☐ Seat: #5325.010 Elongated Champion® Slow Close solid plastic seat and cover with easy lift off feature
- ☐ Seat: #5284.016 Elongated EverClean® solid plastic seat and cover
- ☐ Seat: #5321.110 EverClean® Elongated Seat with Slow Close Snap-Off Hinges
- ☐ Supply with stop:



NOTES:

THIS TOILET IS DESIGNED TO ROUGH-IN AT A MINIMUM DIMENSION OF 254MM (10") FROM FINISHED WALL TO C/L OF OUTLET. SUPPLY NOT INCLUDED WITH FIXTURE AND MUST BE ORDERED SEPARATELY.

* DIMENSION SHOWN FOR LOCATION OF SUPPLY IS SUGGESTED.

IMPORTANT: Dimensions of fixtures are nominal and may vary within the range of tolerances established by ANSI Standard A112.19.2.

These measurements are subject to change or cancellation. No responsibility is assumed for use of superseded or voided pages.

CADET® 3
Flushing System

CADET® 3 ELONGATED 14" ROUGH-IN TOILET

☐ **2383.014**

- Vitreous china
- Low-consumption (6.0 Lpf/1.6 gpf)
- EverClean® surface inhibits the growth of stain- and odor-causing bacteria, mold, and mildew on the surface
- Features the **Cadet® 3 Flushing System**
- Elongated siphon action jetted bowl
- Fully-glazed 2-1/8" trapway with 2" ball pass
- Generous 9" x 8" water surface area
- Close-coupled tank with flat tank cover for superior storage
- Oversized 3" flush valve with chemical resistant flapper
- Chrome trip lever
- Speed Connect® tank-to-bowl coupling system
- Sanitary dam on bowl with four point tank stabilization
- 2 color-matched bolt caps
- 100% factory flush tested
- 5 year warranty



☐ **3014.016** Elongated Bowl

☐ **3014.001** Elongated Universal Bowl

☐ **4027.016** Tank

Nominal Dimensions:

819 x 445 x 737mm (32-1/4" x 17-1/2" x 29")

Fixture only, seat and supply by others

Alternative Tank Configurations Available:

- ☐ **4027.600** Tank complete with tank cover locking device
- ☐ **4027.800** Tank complete with trip lever on right side
- ☐ **4027.900** Tank complete with tank cover locking device and trip lever on right side

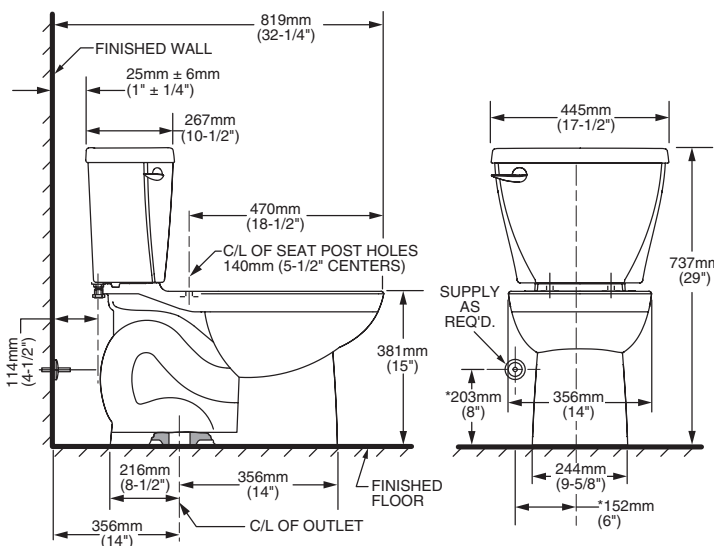
Compliance Certifications -

Meets or Exceeds the Following Specifications:

- ASME A112.19.2-2008/CSA B45.1-08 for Vitreous China Fixtures

To Be Specified:

- ☐ Color: ☐ White ☐ Bone ☐ Linen ☐ Black
- ☐ Seat: #5325.010 Elongated Champion® Slow Close solid plastic seat and cover with easy lift off feature
- ☐ Seat: #5284.016 Elongated EverClean® solid plastic seat and cover
- ☐ Seat: #5321.110 EverClean® Elongated Seat with Slow Close Snap-Off Hinges
- ☐ Supply with stop:



NOTES:

THIS TOILET IS DESIGNED TO ROUGH-IN AT A MINIMUM DIMENSION OF 356MM (14") FROM FINISHED WALL TO C/L OF OUTLET. SUPPLY NOT INCLUDED WITH FIXTURE AND MUST BE ORDERED SEPARATELY.

* DIMENSION SHOWN FOR LOCATION OF SUPPLY IS SUGGESTED.

IMPORTANT: Dimensions of fixtures are nominal and may vary within the range of tolerances established by ANSI Standard A112.19.2. These measurements are subject to change or cancellation. No responsibility is assumed for use of superseded or voided pages.

CADET® 3
Flushing System

**CADET® 3 RIGHT HEIGHT®
ROUND FRONT TOILET**

- ❑ **2755.016**
 - Vitreous china
 - Low-consumption (6.0 Lpf/1.6 gpf)
 - EverClean® surface inhibits the growth of stain- and odor-causing bacteria, mold, and mildew on the surface
 - Features the **Cadet® 3 Flushing System**
 - 16-1/2" rim height for accessible applications
 - Space saving round front siphon action jetted bowl
 - Fully-glazed 2-1/8" trapway with 2" ball pass
 - Generous 9" x 8" water surface area
 - Close-coupled tank with flat tank cover for superior storage
 - Oversized 3" flush valve with chemical resistant flapper
 - Chrome trip lever
 - Speed Connect® tank-to-bowl coupling system
 - Sanitary dam on bowl with four point tank stabilization
 - 2 color-matched bolt caps
 - 100% factory flush tested
 - 5 year warranty
- ❑ **2755.800**
 - Same as above, except with trip lever on right hand side
- ❑ **3005.016** Right Height® Round Front Bowl
- ❑ **3005.001** Right Height® Round Front Universal Bowl
- ❑ **4021.016** Tank
- ❑ **4021.800** Tank complete with trip lever located on right side

Nominal Dimensions:

717 x 441 x 770mm (28-1/4" x 17-3/8" x 30-1/4")

Fixture only, seat and supply by others

Alternative Tank Configurations Available:

- ❑ **4021.500** Tank complete with Aquaguard Liner
- ❑ **4021.600** Tank complete with tank cover locking device
- ❑ **4021.700** Tank complete with Aquaguard Liner and tank cover locking device
- ❑ **4021.900** Tank complete with tank cover locking device and trip lever located on right side
- ❑ **4021.950** Tank complete with Aquaguard liner, tank cover locking device, and trip lever on right side

Compliance Certifications -

Meets or Exceeds the Following Specifications:

- ASME A112.19.2-2008/CSA B45.1-08 for Vitreous China Fixtures

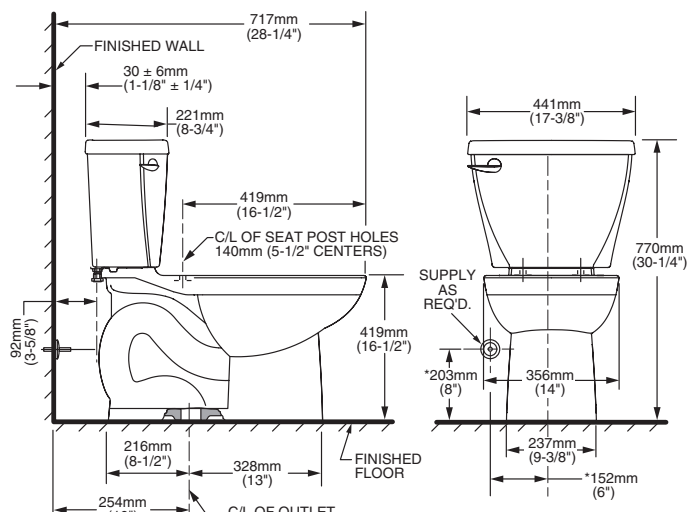


MEETS THE AMERICANS WITH DISABILITIES ACT GUIDELINES AND ICC ANSI A117.1 REQUIREMENTS FOR ACCESSIBLE AND USABLE BUILDING FACILITIES-CHECK LOCAL CODES.



To Be Specified:

- ❑ Color: ☐ White ☐ Bone ☐ Linen
- ❑ Seat: #5330.010 Round front Champion® Slow Close solid plastic seat and cover with easy lift off feature
- ❑ Seat: #5282.011 Round Front EverClean® solid plastic seat and cover
- ❑ Seat: #5320.110 EverClean® Round Front Seat with Slow Close Snap-Off Hinges
- ❑ Supply with stop:



NOTES:

THIS TOILET IS DESIGNED TO ROUGH-IN AT A MINIMUM DIMENSION OF 305MM (12") FROM FINISHED WALL TO C/L OF OUTLET. SUPPLY NOT INCLUDED WITH FIXTURE AND MUST BE ORDERED SEPARATELY.

* DIMENSION SHOWN FOR LOCATION OF SUPPLY IS SUGGESTED.

IMPORTANT: Dimensions of fixtures are nominal and may vary within the range of tolerances established by ANSI Standard A112.19.2. These measurements are subject to change or cancellation. No responsibility is assumed for use of superseded or voided pages.

CADET® 3
Flushing System

**CADET® 3 RIGHT HEIGHT®
ROUND FRONT 10" ROUGH-IN TOILET**

☐ **2756.016**

- Vitreous china
- Low-consumption (6.0 Lpf/1.6 gpf)
- EverClean® surface inhibits the growth of stain- and odor-causing bacteria, mold, and mildew on the surface
- Features the **Cadet® 3 Flushing System**
- 16-1/2" rim height for accessible applications
- Space saving round front siphon action jetted bowl
- Fully-glazed 2-1/8" trapway with 2" ball pass
- Generous 9" x 8" water surface area
- Close-coupled tank with flat tank cover for superior storage
- Oversized 3" flush valve with chemical resistant flapper
- Chrome trip lever
- Speed Connect® tank-to-bowl coupling system
- Sanitary dam on bowl with four point tank stabilization
- 2 color-matched bolt caps
- 100% factory flush tested
- 5 year warranty

☐ **3005.016** Right Height® Round Front Bowl

☐ **3005.001** Right Height® Round Front Universal Bowl

☐ **4019.016** Tank

Nominal Dimensions:

667 x 439 x 770mm (26-1/4" x 17-1/4" x 30-1/4")

Fixture only, seat and supply by others

Alternative Tank Configurations Available:

- ☐ **4019.600** Tank complete with tank cover locking device
- ☐ **4019.800** Tank complete with trip lever on right side
- ☐ **4019.900** Tank complete with tank cover locking device and trip lever on right side

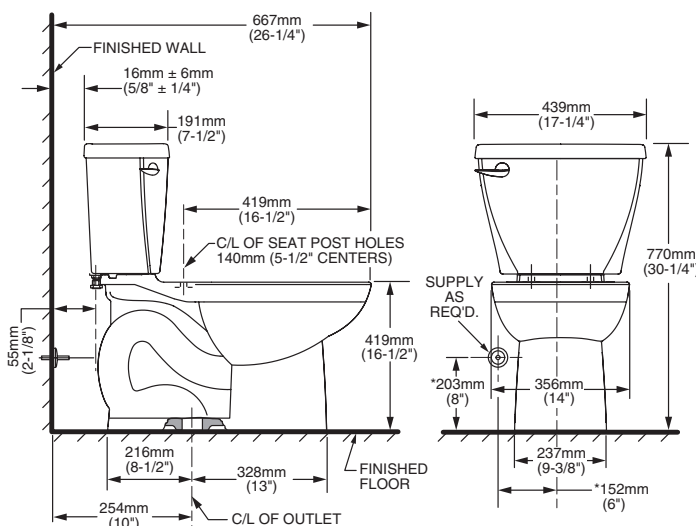
Compliance Certifications -

Meets or Exceeds the Following Specifications:

- ASME A112.19.2-2008/CSA B45.1-08 for Vitreous China Fixtures

To Be Specified:

- ☐ Color: ☐ White ☐ Bone ☐ Linen
- ☐ Seat: #5330.010 Round front Champion® Slow Close solid plastic seat and cover with easy lift off feature
- ☐ Seat: #5282.011 Round Front EverClean® solid plastic seat and cover
- ☐ Seat: #5320.110 EverClean® Round Front Seat with Slow Close Snap-Off Hinges
- ☐ Supply with stop:



NOTES:

THIS TOILET IS DESIGNED TO ROUGH-IN AT A MINIMUM DIMENSION OF 254MM (10") FROM FINISHED WALL TO C/L OF OUTLET.

SUPPLY NOT INCLUDED WITH FIXTURE AND MUST BE ORDERED SEPARATELY.

* DIMENSION SHOWN FOR LOCATION OF SUPPLY IS SUGGESTED.

IMPORTANT: Dimensions of fixtures are nominal and may vary within the range of tolerances established by ANSI Standard A112.19.2.

These measurements are subject to change or cancellation. No responsibility is assumed for use of superseded or voided pages.



MEETS THE AMERICANS WITH DISABILITIES ACT GUIDELINES
AND ICC ANSI A117.1 REQUIREMENTS FOR ACCESSIBLE AND
USABLE BUILDING FACILITIES-CHECK LOCAL CODES.

CADET® 3
Flushing System

**CADET® 3 RIGHT HEIGHT®
ROUND FRONT 14" ROUGH-IN TOILET**

2757.016

- Vitreous china
- Low-consumption (6.0 Lpf/1.6 gpf)
- EverClean® surface inhibits the growth of stain- and odor-causing bacteria, mold, and mildew on the surface
- Features the **Cadet® 3 Flushing System**
- 16-1/2" rim height for accessible applications
- Space saving round front siphon action jetted bowl
- Fully-glazed 2-1/8" trapway with 2" ball pass
- Generous 9" x 8" water surface area
- Close-coupled tank with flat tank cover for superior storage
- Oversized 3" flush valve with chemical resistant flapper
- Chrome trip lever
- Speed Connect® tank-to-bowl coupling system
- Sanitary dam on bowl with four point tank stabilization
- 2 color-matched bolt caps
- 100% factory flush tested
- 5 year warranty

3005.016 Right Height® Round Front Bowl

3005.001 Right Height® Round Front Universal Bowl

4027.016 Tank

Nominal Dimensions:

768 x 442 x 770mm (30-1/4" x 17-3/8" x 30-1/4")

Fixture only, seat and supply by others

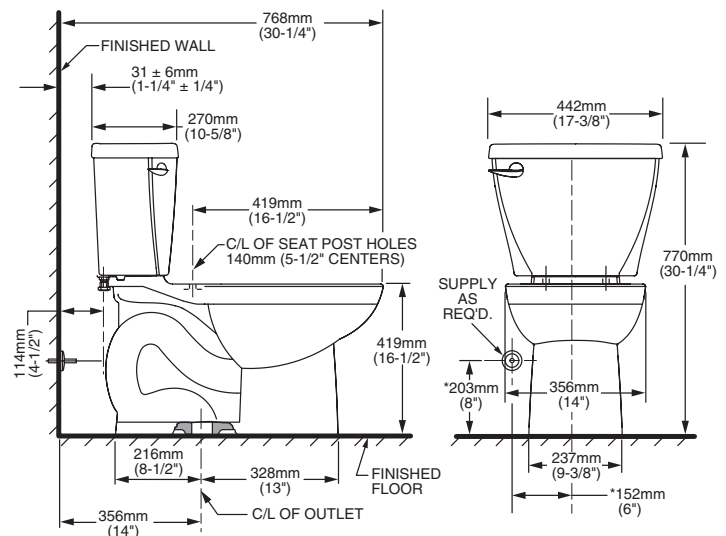
Compliance Certifications -

Meets or Exceeds the Following Specifications:

- ASME A112.19.2-2008/CSA B45.1-08 for Vitreous China Fixtures

To Be Specified:

- ☐ Color: ☐ White ☐ Bone ☐ Linen
- ☐ Seat: #5330.010 Round front Champion® Slow Close solid plastic seat and cover with easy lift off feature
- ☐ Seat: #5282.011 Round Front EverClean® solid plastic seat and cover
- ☐ Seat: #5320.110 EverClean® Round Front Seat with Slow Close Snap-Off Hinges
- ☐ Supply with stop:



NOTES:

THIS TOILET IS DESIGNED TO ROUGH-IN AT A MINIMUM DIMENSION OF 356MM (14") FROM FINISHED WALL TO C/L OF OUTLET.

SUPPLY NOT INCLUDED WITH FIXTURE AND MUST BE ORDERED SEPARATELY.

* DIMENSION SHOWN FOR LOCATION OF SUPPLY IS SUGGESTED.

IMPORTANT: Dimensions of fixtures are nominal and may vary within the range of tolerances established by ANSI Standard A112.19.2. These measurements are subject to change or cancellation. No responsibility is assumed for use of superseded or voided pages.



**MEETS THE AMERICANS WITH DISABILITIES ACT GUIDELINES
AND ICC ANSI A117.1 REQUIREMENTS FOR ACCESSIBLE AND
USABLE BUILDING FACILITIES-CHECK LOCAL CODES.**

CADET® 3
Flushing System

CADET® 3 ROUND FRONT TOILET

☐ **2384.012**

- Vitreous china
- Low-consumption (6.0 Lpf/1.6 gpf)
- EverClean® surface inhibits the growth of stain- and odor-causing bacteria, mold, and mildew on the surface
- Features the **Cadet® 3 Flushing System**
- Space saving round front siphon action jetted bowl
- Fully-glazed 2-1/8" trapway with 2" ball pass
- Generous 9" x 8" water surface area
- Close-coupled tank with flat tank cover for superior storage
- Oversized 3" flush valve with chemical resistant flapper
- Chrome trip lever
- Speed Connect® tank-to-bowl coupling system
- Sanitary dam on bowl with four point tank stabilization
- 2 color-matched bolt caps
- 100% factory flush tested
- 5 year warranty



☐ **3011.016** Round Front Bowl

☐ **3011.001** Round Front Universal Bowl

☐ **4021.016** Tank

Nominal Dimensions:

718 x 438 x 733mm (28-1/4" x 17-1/4" x 28-7/8")

Fixture only, seat and supply by others

Alternative Tank Configurations Available:

- ☐ **4021.500** Tank complete with Aquaguard Liner
- ☐ **4021.600** Tank complete with tank cover locking device
- ☐ **4021.700** Tank complete with Aquaguard Liner and tank cover locking device
- ☐ **4021.800** Tank complete with trip lever located on right side
- ☐ **4021.900** Tank complete with tank cover locking device and trip lever located on right side
- ☐ **4021.950** Tank complete with Aquaguard liner, tank cover locking device, and trip lever on right side

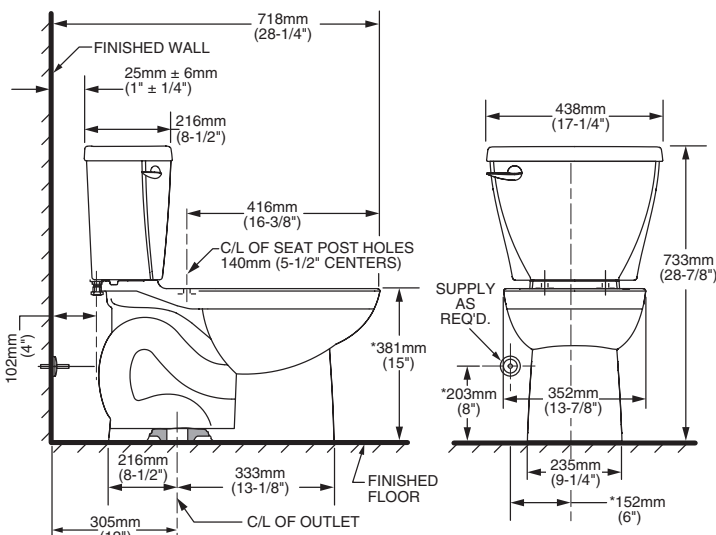
Compliance Certifications -

Meets or Exceeds the Following Specifications:

- ASME A112.19.2-2008/CSA B45.1-08 for Vitreous China Fixtures

To Be Specified:

- ☐ Color: ☐ White ☐ Bone ☐ Linen
- ☐ Seat: #5330.010 Round front Champion® Slow Close solid plastic seat and cover with easy lift off feature
- ☐ Seat: #5282.011 Round Front EverClean® solid plastic seat and cover
- ☐ Seat: #5320.110 EverClean® Round Front Seat with Slow Close Snap-Off Hinges
- ☐ Supply with stop:



NOTES:

THIS TOILET IS DESIGNED TO ROUGH-IN AT A MINIMUM DIMENSION OF 305MM (12") FROM FINISHED WALL TO C/L OF OUTLET.

SUPPLY NOT INCLUDED WITH FIXTURE AND MUST BE ORDERED SEPARATELY.

* DIMENSION SHOWN FOR LOCATION OF SUPPLY IS SUGGESTED.

IMPORTANT: Dimensions of fixtures are nominal and may vary within the range of tolerances established by ANSI Standard A112.19.2. These measurements are subject to change or cancellation. No responsibility is assumed for use of superseded or voided pages.

CADET® 3
Flushing System

**CADET® 3 ROUND FRONT
10" ROUGH-IN TOILET**

- ☐ **2384.010**
 - Vitreous china
 - Low-consumption (6.0 Lpf/1.6 gpf)
 - EverClean® surface inhibits the growth of stain- and odor-causing bacteria, mold, and mildew on the surface
 - Features the **Cadet® 3 Flushing System**
 - Space saving round front siphon action jetted bowl
 - Fully-glazed 2-1/8" trapway with 2" ball pass
 - Generous 9" x 8" water surface area
 - Close-coupled tank with flat tank cover for superior storage
 - Oversized 3" flush valve with chemical resistant flapper
 - Chrome trip lever
 - Speed Connect® tank-to-bowl coupling system
 - Sanitary dam on bowl with four point tank stabilization
 - 2 color-matched bolt caps
 - 100% factory flush tested
 - 5 year warranty

- ☐ **3011.016** Round Front Bowl
- ☐ **3011.001** Round Front Universal Bowl
- ☐ **4019.016** Tank

Nominal Dimensions:

667 x 432 x 740mm (26-1/4" x 17" x 29-1/8")

Fixture only, seat and supply by others

Alternative Tank Configurations Available:

- ☐ **4019.600** Tank complete with tank cover locking device
- ☐ **4019.800** Tank complete with trip lever on right side
- ☐ **4019.900** Tank complete with tank cover locking device and trip lever on right side

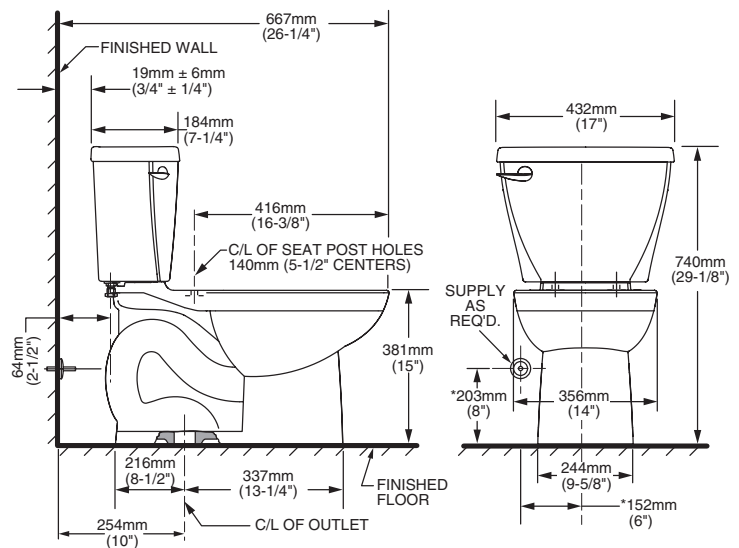
Compliance Certifications -

Meets or Exceeds the Following Specifications:

- ASME A112.19.2-2008/CSA B45.1-08 for Vitreous China Fixtures

To Be Specified:

- ☐ Color: ☐ White ☐ Bone ☐ Linen
- ☐ Seat: #5330.010 Round front Champion® Slow Close solid plastic seat and cover with easy lift off feature
- ☐ Seat: #5282.011 Round Front EverClean® solid plastic seat and cover
- ☐ Seat: #5320.110 EverClean® Round Front Seat with Slow Close Snap-Off Hinges
- ☐ Supply with stop:



NOTES:

THIS TOILET IS DESIGNED TO ROUGH-IN AT A MINIMUM DIMENSION OF 254MM (10") FROM FINISHED WALL TO C/L OF OUTLET. SUPPLY NOT INCLUDED WITH FIXTURE AND MUST BE ORDERED SEPARATELY.

* DIMENSION SHOWN FOR LOCATION OF SUPPLY IS SUGGESTED.

IMPORTANT: Dimensions of fixtures are nominal and may vary within the range of tolerances established by ANSI Standard A112.19.2. These measurements are subject to change or cancellation. No responsibility is assumed for use of superseded or voided pages.

CADET® 3
Flushing System

**CADET® 3 ROUND FRONT
14" ROUGH-IN TOILET**

☐ **2384.014**

- Vitreous china
- Low-consumption (6.0 Lpf/1.6 gpf)
- EverClean® surface inhibits the growth of stain- and odor-causing bacteria, mold, and mildew on the surface
- Features the **Cadet® 3 Flushing System**
- Space saving round front siphon action jetted bowl
- Fully-glazed 2-1/8" trapway with 2" ball pass
- Generous 9" x 8" water surface area
- Close-coupled tank with flat tank cover for superior storage
- Oversized 3" flush valve with chemical resistant flapper
- Chrome trip lever
- Speed Connect® tank-to-bowl coupling system
- Sanitary dam on bowl with four point tank stabilization
- 2 color-matched bolt caps
- 100% factory flush tested
- 5 year warranty

☐ **3011.016** Round Front Bowl

☐ **3011.001** Round Front Universal Bowl

☐ **4027.016** Tank

Nominal Dimensions:

768 x 445 x 746mm (30-1/4" x 17-1/2" x 29-3/8")

Fixture only, seat and supply by others

Alternative Tank Configurations Available:

- ☐ **4027.600** Tank complete with tank cover locking device
- ☐ **4027.800** Tank complete with trip lever on right side
- ☐ **4027.900** Tank complete with tank cover locking device and trip lever on right side

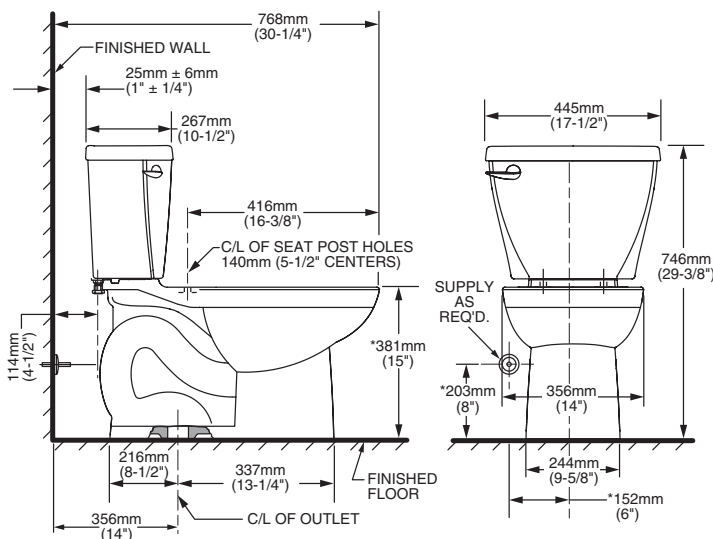
Compliance Certifications -

Meets or Exceeds the Following Specifications:

- ASME A112.19.2-2008/CSA B45.1-08 for Vitreous China Fixtures

To Be Specified:

- ☐ Color: ☐ White ☐ Bone ☐ Linen
- ☐ Seat: #5330.010 Round front Champion® Slow Close solid plastic seat and cover with easy lift off feature
- ☐ Seat: #5282.011 Round Front EverClean® solid plastic seat and cover
- ☐ Seat: #5320.110 EverClean® Round Front Seat with Slow Close Snap-Off Hinges
- ☐ Supply with stop:



NOTES:

THIS TOILET IS DESIGNED TO ROUGH-IN AT A MINIMUM DIMENSION OF 356MM (14") FROM FINISHED WALL TO C/L OF OUTLET. SUPPLY NOT INCLUDED WITH FIXTURE AND MUST BE ORDERED SEPARATELY. * DIMENSION SHOWN FOR LOCATION OF SUPPLY IS SUGGESTED.

IMPORTANT: Dimensions of fixtures are nominal and may vary within the range of tolerances established by ANSI Standard A112.19.2. These measurements are subject to change or cancellation. No responsibility is assumed for use of superseded or voided pages.

CADET® 3
Flushing System

COMPACT CADET® 3 ELONGATED TOILET

☐ **2431.010**

- Vitreous china
- Low-consumption (6.0 Lpf/1.6 gpf)
- Space saving compact design - Elongated bowl fits in the same space as a round front toilet
- 12" (305mm) Rough-in
- EverClean® surface inhibits the growth of stain- and odor-causing bacteria, mold, and mildew on the surface
- Featuring the **Cadet® 3 Flushing System**
- Elongated siphon action jetted bowl with 2-1/8" trapway
- Internal trapway area fully glazed
- Generous 8" x 9" water surface area
- Close coupled tank with flat tank cover for superior storage
- Oversized 3" Flush Valve with Chemical Resistant Flapper
- Speed Connect® tank to bowl coupling system
- Sanitary dam on bowl with four point tank stabilization
- 2 color match bolt caps
- Chrome Trip Lever
- Proven preferred styling
- 100% factory flush tested
- 5 year warranty

☐ **3046.016** Elongated Bowl

☐ **3046.001** Elongated Universal Bowl

☐ **4019.016** Tank

Nominal Dimensions:

718 x 438 x 733mm
(28-1/4" x 17-1/4" x 28-7/8")

Fixture only, seat and supply by others

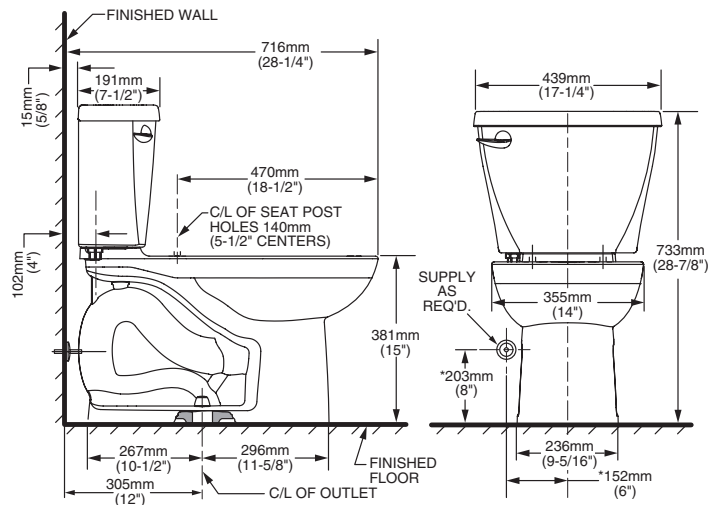
Compliance Certifications -

Meets or Exceeds the Following Specifications:

- ASME A112.19.2-2008/CSA B45.1-08 for Vitreous China Fixtures

To Be Specified:

- ☐ Color: ☐ White ☐ Bone ☐ Linen
- ☐ Seat: #5325.010 Elongated Champion® Slow Close solid plastic seat and cover with easy lift off feature
- ☐ Seat: #5284.016 Elongated EverClean® solid plastic seat and cover
- ☐ Seat: #5321.110 EverClean® Elongated Seat with Slow Close Snap-Off Hinges
- ☐ Supply with stop:



NOTES:

THIS COMBINATION IS DESIGNED TO ROUGH-IN AT A MINIMUM DIMENSION OF 305MM (12") FROM FINISHED WALL TO C/L OF OUTLET.

* DIMENSIONS SHOWN FOR LOCATION OF SUPPLY ARE SUGGESTED. SUPPLY NOT INCLUDED WITH FIXTURE AND MUST BE ORDERED SEPARATELY.

IMPORTANT: Dimensions of fixtures are nominal and may vary within the range of tolerance established by ANSI Standard A112.19.2. These measurements are subject to change or cancellation. No responsibility is assumed for use of superseded or voided pages.

CADET® 3
Flushing System

**COMPACT CADET® 3 FloWise®
ELONGATED TOILET**

☐ **2431.101**

- Vitreous china
- Meets definition for HET (High Efficiency Toilet)
- High efficiency (4.8 Lpf/1.28 gpf)
- Meets EPA WaterSense® criteria
- Low-consumption (6.0 Lpf/1.6 gpf)
- Space saving compact design - Elongated bowl fits in the same space as a round front toilet
- 12" (305mm) Rough-in
- EverClean® surface inhibits the growth of stain- and odor-causing bacteria, mold, and mildew on the surface
- Featuring the **Cadet® 3 Flushing System**
- Elongated siphon action jetted bowl with 2-1/8" trapway
- Internal trapway area fully glazed
- Generous 8" x 9" water surface area
- Close coupled tank with flat tank cover for superior storage
- Oversized 3" Flush Valve with Chemical Resistant Flapper
- Speed Connect® tank to bowl coupling system
- Sanitary dam on bowl with four point tank stabilization
- 2 color match bolt caps
- Chrome Trip Lever
- Proven preferred styling
- 100% factory flush tested
- Lifetime warranty on chinaware and 5 year warranty on mechanical parts

☐ **3046.001** Elongated Universal Bowl

☐ **4019.128** Tank

Nominal Dimensions:

718 x 438 x 733mm
(28-1/4" x 17-1/4" x 28-7/8")

Fixture only, seat and supply by others

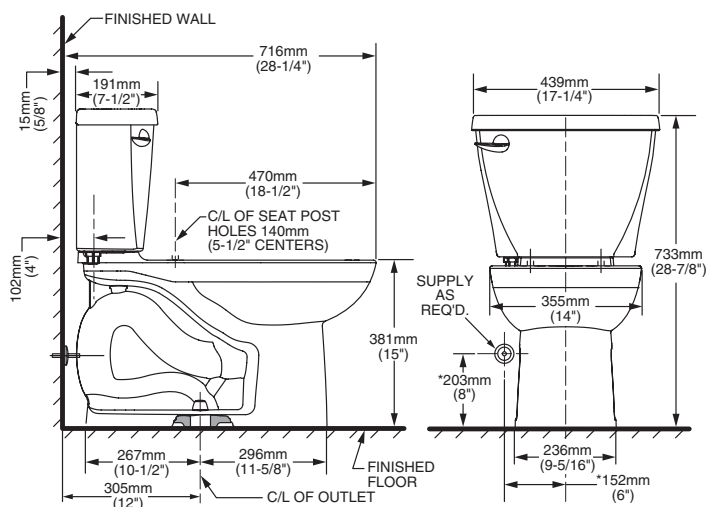
Compliance Certifications -

Meets or Exceeds the Following Specifications:

- ASME A112.19.2-2008/CSA B45.1-08 for Vitreous China Fixtures

To Be Specified:

- ☐ Color: ☐ White ☐ Bone ☐ Linen
- ☐ Seat: #5325.010 Elongated Champion® Slow Close solid plastic seat and cover with easy lift off feature
- ☐ Seat: #5284.016 Elongated EverClean® solid plastic seat and cover
- ☐ Seat: #5321.110 EverClean® Elongated Seat with Slow Close Snap-Off Hinges
- ☐ Supply with stop:



NOTES:

THIS COMBINATION IS DESIGNED TO ROUGH-IN AT A MINIMUM DIMENSION OF 305MM (12") FROM FINISHED WALL TO C/L OF OUTLET.
* DIMENSIONS SHOWN FOR LOCATION OF SUPPLY ARE SUGGESTED.
SUPPLY NOT INCLUDED WITH FIXTURE AND MUST BE ORDERED SEPARATELY.

IMPORTANT: Dimensions of fixtures are nominal and may vary within the range of tolerance established by ANSI Standard A112.19.2. These measurements are subject to change or cancellation. No responsibility is assumed for use of superseded or voided pages.



CADET® 3
Flushing System

CADET® 3 FloWise®
RIGHT HEIGHT® ELONGATED TOILET

☐ **2835.128**

- Vitreous china
- Meets definition for HET (High Efficiency Toilet)
- High efficiency (4.8 Lpf/1.28 gpf)
- Meets EPA WaterSense® criteria
- EverClean® surface inhibits the growth of stain- and odor-causing bacteria, mold, and mildew on the surface
- Featuring the **CADET® 3 Flushing System**
- 16-1/2" rim height for accessible application
- Elongated siphon action jetted bowl
- Fully-glazed 2-1/8" trapway
- Generous 9" x 8" water surface area
- Close-coupled tank with flat tank cover for superior storage
- Oversized 3" flush valve with chemical resistant flapper
- Chrome trip lever
- Speed Connect® tank-to-bowl coupling system
- Sanitary dam on bowl with four point tank stabilization
- 2 color-matched bolt caps
- 100% factory flush tested
- 5 year warranty

- ☐ **3016.128** Right Height® Elongated Bowl
- ☐ **3016.001** Right Height® Elongated Universal Bowl
- ☐ **4021.128** Tank

Nominal Dimensions:

768 x 438 x 768mm (30-1/4" x 17-1/4" x 30-1/4")

Fixture only, seat and supply by others

Alternative Tank Configurations Available:

- ☐ **4021.513** Tank complete with Aquaguard Liner
- ☐ **4021.613** Tank complete with tank cover locking device
- ☐ **4021.713** Tank complete with Aquaguard Liner and tank cover locking device
- ☐ **4021.813** Tank complete with trip lever located on right side
- ☐ **4021.913** Tank complete with tank cover locking device and trip lever located on right side
- ☐ **4021.953** Tank complete with Aquaguard Liner, tank cover locking device and trip lever located on right side

Compliance Certifications -

Meets or Exceeds the Following Specifications:

- ASME A112.19.2-2008/CSA B45.1-08 for Vitreous China Fixtures
- US EPA WaterSense® Specification for HET's



SEE REVERSE FOR ROUGHING-IN DIMENSIONS

To Be Specified:

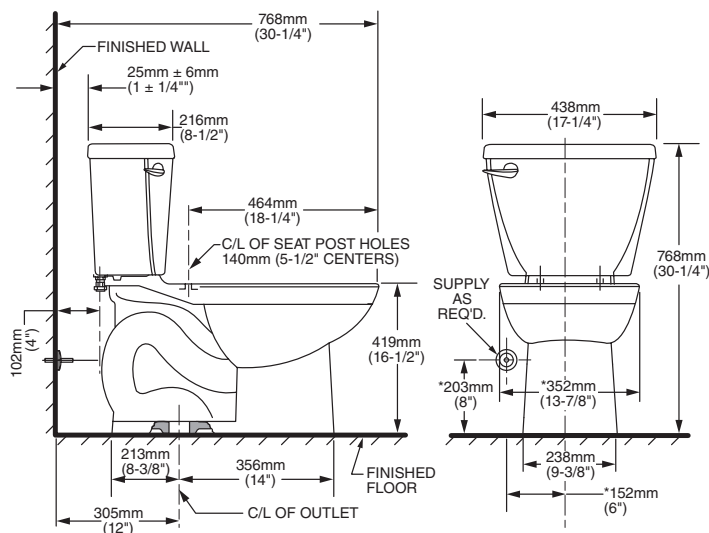
- ☐ Color: ☐ White ☐ Bone ☐ Linen
- ☐ Seat: #5325.010 Elongated Champion® Slow Close solid plastic seat and cover with easy lift off feature
- ☐ Seat: #5284.016 Elongated EverClean® solid plastic seat and cover
- ☐ Seat: #5321.110 EverClean® Elongated Seat with Slow Close Snap-Off Hinges
- ☐ Supply with stop:



MEETS THE AMERICANS WITH DISABILITIES ACT GUIDELINES AND ICC ANSI A117.1 REQUIREMENTS FOR ACCESSIBLE AND USABLE BUILDING FACILITIES-CHECK LOCAL CODES.



CADET® 3
Flushing System



NOTES:

THIS TOILET IS DESIGNED TO ROUGH-IN AT A MINIMUM DIMENSION OF 305MM (12") FROM FINISHED WALL TO C/L OF OUTLET.

SUPPLY NOT INCLUDED WITH FIXTURE AND MUST BE ORDERED SEPARATELY.

* DIMENSION SHOWN FOR LOCATION OF SUPPLY IS SUGGESTED.

IMPORTANT: Dimensions of fixtures are nominal and may vary within the range of tolerances established by ANSI Standard A112.19.2.

These measurements are subject to change or cancellation. No responsibility is assumed for use of superseded or voided page

**CADET® 3 FloWise® RIGHT HEIGHT®
ELONGATED 10" ROUGH-IN TOILET**

☐ **2836.128**

- Vitreous china
- Meets definition for HET (High Efficiency Toilet)
- High efficiency (4.8 Lpf/1.28 gpf)
- Meets EPA WaterSense® criteria
- EverClean® surface inhibits the growth of stain- and odor-causing bacteria, mold, and mildew on the surface
- Features the **Cadet® 3 Flushing System**
- 16-1/2" rim height for accessible applications
- Elongated siphon action jetted bowl
- Fully-glazed 2-1/8" trapway
- Generous 9" x 8" water surface area
- Close-coupled tank with flat tank cover for superior storage
- Oversized 3" flush valve with chemical resistant flapper
- Chrome trip lever
- Speed Connect® tank-to-bowl coupling system
- Sanitary dam on bowl with four point tank stabilization
- 2 color-matched bolt caps
- 100% factory flush tested
- 5 year warranty

☐ **3016.128** Right Height® Elongated Bowl

☐ **3016.001** Right Height® Elongated Universal Bowl

☐ **4019.128** Tank

Nominal Dimensions:

724 x 432 x 768mm
(28-1/2" x 17" x 30-1/4")

Fixture only, seat and supply by others

Alternative Tank Configurations Available:

- ☐ **4019.813** Tank complete with trip lever on right side

Compliance Certifications -

Meets or Exceeds the Following Specifications:

- ASME A112.19.2-2008/CSA B45.1-08 for Vitreous China Fixtures
- US EPA WaterSense® Specification for HET's



SEE REVERSE FOR ROUGHING-IN DIMENSIONS

To Be Specified:

- ☐ Color: ☐ White ☐ Bone ☐ Linen
- ☐ Seat: #5325.010 Elongated Champion® Slow Close solid plastic seat and cover with easy lift off feature
- ☐ Seat: #5284.016 Elongated EverClean® solid plastic seat and cover
- ☐ Seat: #5321.110 EverClean® Elongated Seat with Slow Close Snap-Off Hinges
- ☐ Supply with stop:



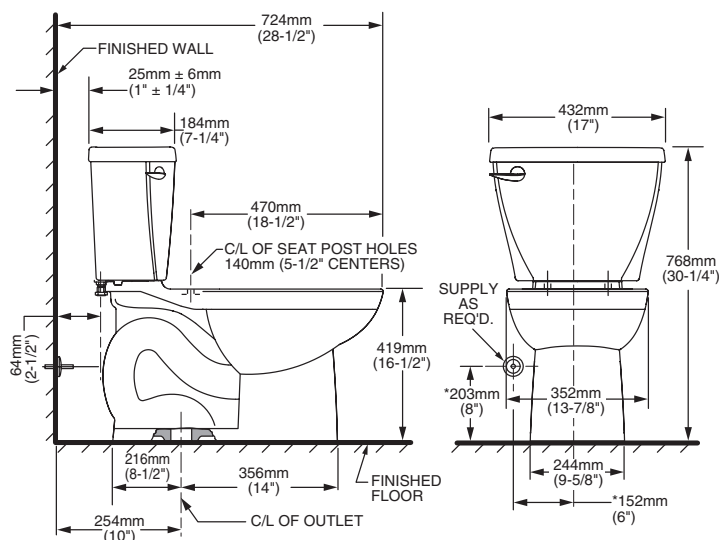
MEETS THE AMERICANS WITH DISABILITIES ACT GUIDELINES AND ICC ANSI A117.1 REQUIREMENTS FOR ACCESSIBLE AND USABLE BUILDING FACILITIES-CHECK LOCAL CODES.



CADET® 3
Flushing System

CADET® 3 FloWise® RIGHT HEIGHT® ELONGATED 10" ROUGH-IN TOILET

VITREOUS CHINA



NOTES:

THIS TOILET IS DESIGNED TO ROUGH-IN AT A MINIMUM DIMENSION OF 305MM (10") FROM FINISHED WALL TO C/L OF OUTLET.

SUPPLY NOT INCLUDED WITH FIXTURE AND MUST BE ORDERED SEPARATELY.

* DIMENSION SHOWN FOR LOCATION OF SUPPLY IS SUGGESTED.

IMPORTANT: Dimensions of fixtures are nominal and may vary within the range of tolerances established by ANSI Standard A112.19.2.

These measurements are subject to change or cancellation. No responsibility is assumed for use of superseded or voided pages.

CADET® 3 FloWise® ELONGATED TOILET

- ☐ **2832.128**
 - Vitreous china
 - Meets definition for HET (High Efficiency Toilet)
 - High efficiency (4.8 Lpf/1.28 gpf)
 - Meets EPA WaterSense® criteria
 - EverClean® surface inhibits the growth of stain- and odor-causing bacteria, mold, and mildew on the surface
 - Featuring the **CADET® 3 Flushing System**
 - Elongated siphon action jetted bowl
 - Fully-glazed 2-1/8" trapway
 - Generous 9" x 8" water surface area
 - Close-coupled tank with flat tank cover for superior storage
 - Oversized 3" flush valve with chemical resistant flapper
 - Chrome trip lever
 - Speed Connect® tank-to-bowl coupling system
 - Sanitary dam on bowl with four point tank stabilization
 - 2 color-matched bolt caps
 - 100% factory flush tested
 - 5 year warranty



- ☐ **3014.128** Elongated Bowl
- ☐ **3014.001** Elongated Universal Bowl
- ☐ **4021.128** Tank

Nominal Dimensions:

768 x 438 x 733mm (30-1/4" x 17-1/4" x 28-7/8")

Fixture only, seat and supply by others

Alternative Tank Configurations Available:

- ☐ **4021.513** Tank complete with Aquaguard Liner
- ☐ **4021.613** Tank complete with tank cover locking device
- ☐ **4021.713** Tank complete with Aquaguard Liner and tank cover locking device
- ☐ **4021.813** Tank complete with trip lever located on right side
- ☐ **4021.913** Tank complete with tank cover locking device and trip lever located on right side
- ☐ **4021.953** Tank complete with Aquaguard Liner, tank cover locking device and trip lever located on right side

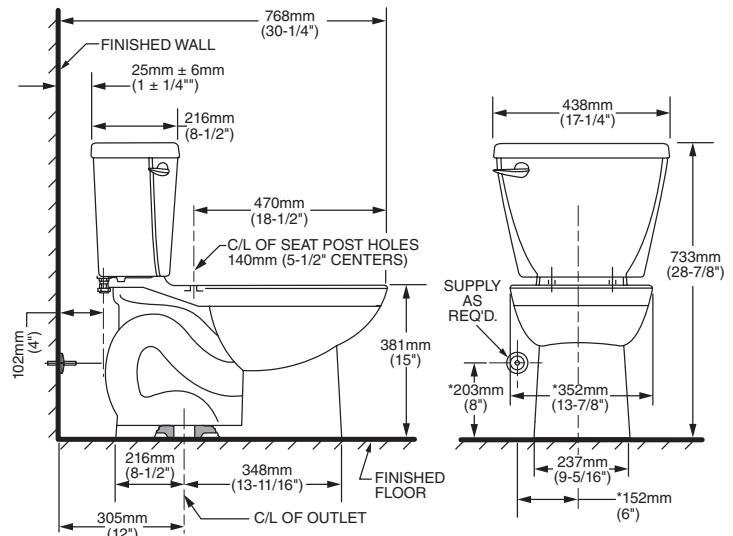
Compliance Certifications -

Meets or Exceeds the Following Specifications:

- ASME A112.19.2-2008/CSA B45.1-08 for Vitreous China Fixtures
- US EPA WaterSense® Specification for HET's

To Be Specified:

- ☐ Color: ☐ White ☐ Bone ☐ Linen
- ☐ Seat: #5325.010 Elongated Champion® Slow Close solid plastic seat and cover with easy lift off feature
- ☐ Seat: #5284.016 Elongated EverClean® solid plastic seat and cover
- ☐ Seat: #5321.110 EverClean® Elongated Seat with Slow Close Snap-Off Hinges
- ☐ Supply with stop:



NOTES:

THIS TOILET IS DESIGNED TO ROUGH-IN AT A MINIMUM DIMENSION OF 305MM (12") FROM FINISHED WALL TO C/L OF OUTLET. SUPPLY NOT INCLUDED WITH FIXTURE AND MUST BE ORDERED SEPARATELY.

* DIMENSION SHOWN FOR LOCATION OF SUPPLY IS SUGGESTED.

IMPORTANT: Dimensions of fixtures are nominal and may vary within the range of tolerances established by ANSI Standard A112.19.2.

These measurements are subject to change or cancellation. No responsibility is assumed for use of superseded or voided pages.



CADET® 3
Flushing System

CADET® 3 FloWise®
ELONGATED 10" ROUGH-IN TOILET

☐ **2833.128**

- Vitreous china
- Meets definition for HET (High Efficiency Toilet)
- High efficiency (4.8 Lpf/1.28 gpf)
- Meets EPA WaterSense® criteria
- EverClean® surface inhibits the growth of stain- and odor-causing bacteria, mold, and mildew on the surface
- Features the **Cadet® 3 Flushing System**
- Elongated siphon action jetted bowl
- Fully-glazed 2-1/8" trapway
- Generous 9" x 8" water surface area
- Close-coupled tank with flat tank cover for superior storage
- Oversized 3" flush valve with chemical resistant flapper
- Chrome trip lever
- Speed Connect® tank-to-bowl coupling system
- Sanitary dam on bowl with four point tank stabilization
- 2 color-matched bolt caps
- 100% factory flush tested
- 5 year warranty

☐ **3014.128** Elongated Bowl

☐ **3014.001** Elongated Universal Bowl

☐ **4019.128** Tank

Nominal Dimensions:

724 x 432 x 737mm (28-1/2" x 17" x 29")

Fixture only, seat and supply by others

Alternative Tank Configurations Available:

- ☐ **4019.813** Tank complete with trip lever on right side

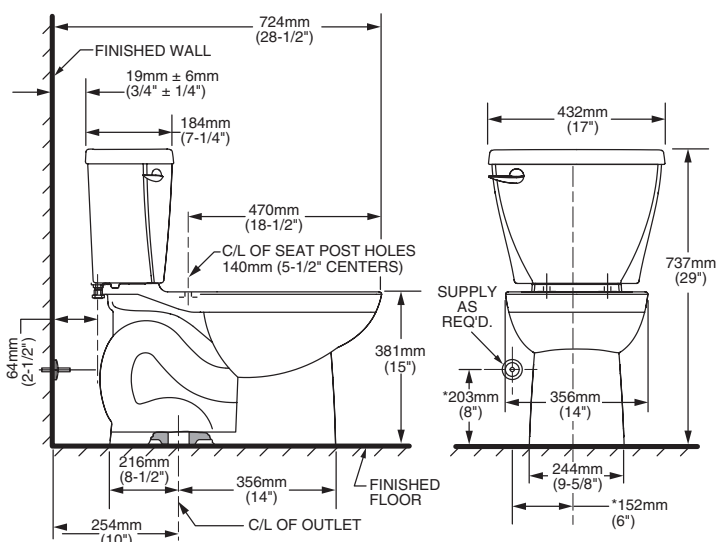
Compliance Certifications -

Meets or Exceeds the Following Specifications:

- ASME A112.19.2-2008/CSA B45.1-08 for Vitreous China Fixtures
- US EPA WaterSense® Specification for HET's

To Be Specified:

- ☐ Color: ☐ White ☐ Bone ☐ Linen
- ☐ Seat: #5325.010 Elongated Champion® Slow Close solid plastic seat and cover with easy lift off feature
- ☐ Seat: #5284.016 Elongated EverClean® solid plastic seat and cover
- ☐ Seat: #5321.110 EverClean® Elongated Seat with Slow Close Snap-Off Hinges
- ☐ Supply with stop:



NOTES:

THIS TOILET IS DESIGNED TO ROUGH-IN AT A MINIMUM DIMENSION OF 254MM (10") FROM FINISHED WALL TO C/L OF OUTLET. SUPPLY NOT INCLUDED WITH FIXTURE AND MUST BE ORDERED SEPARATELY.

* DIMENSION SHOWN FOR LOCATION OF SUPPLY IS SUGGESTED.

IMPORTANT: Dimensions of fixtures are nominal and may vary within the range of tolerances established by ANSI Standard A112.19.2. These measurements are subject to change or cancellation. No responsibility is assumed for use of superseded or voided pages.



CADET® 3
Flushing System

**CADET® 3 FloWise® RIGHT HEIGHT®
ROUND FRONT TOILET**

☐ **2758.128**

- Vitreous china
- Meets definition for HET (High Efficiency Toilet)
- High efficiency (4.8 Lpf/1.28 gpf)
- Meets EPA WaterSense® criteria
- EverClean® surface inhibits the growth of stain- and odor-causing bacteria, mold, and mildew on the surface
- Featuring the **Cadet® 3 Flushing System**
- 16-1/2" rim height for accessible applications
- Space-saving round front siphon action jetted bowl
- Fully-glazed 2-1/8" trapway
- Generous 9" x 8" water surface area
- Close-coupled tank with flat tank cover for superior storage
- Oversized 3" flush valve with chemical resistant flapper
- Chrome trip lever
- Speed Connect® tank-to-bowl coupling system
- Sanitary dam on bowl with four point tank stabilization
- 2 color-matched bolt caps
- 100% factory flush tested
- 5 year warranty

☐ **2758.813**

- Same as above except with trip lever on right hand side

☐ **3005.128** Right Height® Round Front Bowl

☐ **3005.001** Right Height® Round Front Universal Bowl

☐ **4021.128** Tank

☐ **4021.813** Tank complete with trip lever located on right side

Nominal Dimensions:

717 x 441 x 770mm (28-1/4" x 17-3/8" x 30-1/4")

Fixture only, seat and supply by others

Alternative Tank Configurations Available:

- ☐ **4021.513** Tank complete with Aquaguard Liner
- ☐ **4021.613** Tank complete with tank cover locking device
- ☐ **4021.713** Tank complete with Aquaguard Liner and tank cover locking device
- ☐ **4021.913** Tank complete with tank cover locking device and trip lever located on right side
- ☐ **4021.953** Tank complete with Aquaguard Liner, tank cover locking device and trip lever located on right side

Compliance Certifications -

Meets or Exceeds the Following Specifications:

- ASME A112.19.2-2008/CSA B45.1-08 for Vitreous China Fixtures
- US EPA WaterSense® Specification for HET's



SEE REVERSE FOR ROUGHING-IN DIMENSIONS

To Be Specified:

- ☐ Color: ☐ White ☐ Bone ☐ Linen ☐ Black
- ☐ Seat: #5330.010 Round front Champion® Slow Close solid plastic seat and cover with easy lift off feature
- ☐ Seat: #5282.011 Round Front EverClean® solid plastic seat and cover
- ☐ Seat: #5320.110 EverClean® Round Front Seat with Slow Close Snap-Off Hinges
- ☐ Supply with stop:



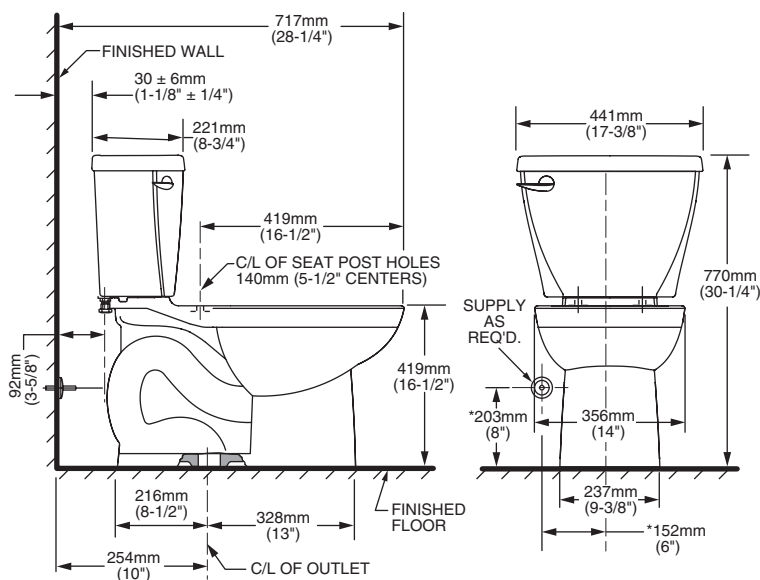
MEETS THE AMERICANS WITH DISABILITIES ACT GUIDELINES AND ICC ANSI A117.1 REQUIREMENTS FOR ACCESSIBLE AND USABLE BUILDING FACILITIES-CHECK LOCAL CODES.



CADET® 3
Flushing System

CADET® 3 FloWise® RIGHT HEIGHT® ROUND FRONT TOILET

VITREOUS CHINA



NOTES:

THIS TOILET IS DESIGNED TO ROUGH-IN AT A MINIMUM DIMENSION OF 305MM (12") FROM FINISHED WALL TO C/L OF OUTLET. SUPPLY NOT INCLUDED WITH FIXTURE AND MUST BE ORDERED SEPARATELY.

* DIMENSION SHOWN FOR LOCATION OF SUPPLY IS SUGGESTED.

IMPORTANT: Dimensions of fixtures are nominal and may vary within the range of tolerances established by ANSI Standard A112.19.2. These measurements are subject to change or cancellation. No responsibility is assumed for use of superseded or voided pages.



CADET® 3 FloWise® RIGHT HEIGHT® ROUND FRONT 10" ROUGH-IN TOILET

VITREOUS CHINA

CADET® 3 FloWise® RIGHT HEIGHT® ROUND FRONT 10" ROUGH-IN TOILET

2849.128

- Vitreous china
- Meets definition for HET (High Efficiency Toilet)
- High efficiency (4.8 Lpf/1.28 gpf)
- Meets EPA WaterSense® criteria
- EverClean® surface inhibits the growth of stain- and odor-causing bacteria, mold, and mildew on the surface
- Features the **Cadet® 3 Flushing System**
- 16-1/2" rim height for accessible applications
- Space saving round front siphon action jetted bowl
- Fully-glazed 2-1/8" trapway
- Generous 9" x 8" water surface area
- Close-coupled tank with flat tank cover for superior storage
- Oversized 3" flush valve with chemical resistant flapper
- Chrome trip lever
- Speed Connect® tank-to-bowl coupling system
- Sanitary dam on bowl with four point tank stabilization
- 2 color-matched bolt caps
- 100% factory flush tested
- 5 year warranty

3005.128 Right Height® Round Front Bowl

3005.001 Right Height® Round Front Universal Bowl

4019.128 Tank

Nominal Dimensions:

667 x 439 x 770mm (26-1/4" x 17-1/4" x 30-1/4")

Fixture only, seat and supply by others

Alternative Tank Configurations Available:

- 3005.813 Tank complete with trip lever on right side

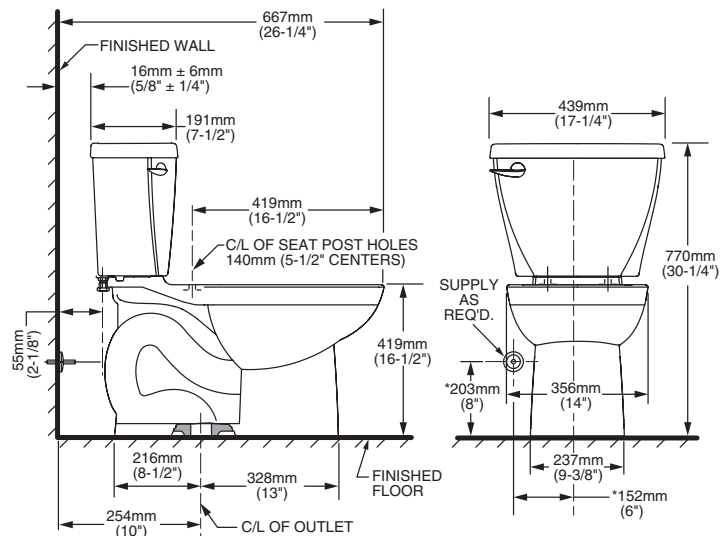
Compliance Certifications -

Meets or Exceeds the Following Specifications:

- ASME A112.19.2-2008/CSA B45.1-08 for Vitreous China Fixtures
- US EPA WaterSense® Specification for HET's

To Be Specified:

- Color: ☐ White ☐ Bone ☐ Linen
- Seat: #5330.010 Round front Champion® Slow Close solid plastic seat and cover with easy lift off feature
- Seat: #5282.011 Round Front EverClean® solid plastic seat and cover
- Seat: #5320.110 EverClean® Round Front Seat with Slow Close Snap-Off Hinges
- Supply with stop:



NOTES:

THIS TOILET IS DESIGNED TO ROUGH-IN AT A MINIMUM DIMENSION OF 254MM (10") FROM FINISHED WALL TO C/L OF OUTLET. SUPPLY NOT INCLUDED WITH FIXTURE AND MUST BE ORDERED SEPARATELY.

* DIMENSION SHOWN FOR LOCATION OF SUPPLY IS SUGGESTED.

IMPORTANT: Dimensions of fixtures are nominal and may vary within the range of tolerances established by ANSI Standard A112.19.2.

These measurements are subject to change or cancellation. No responsibility is assumed for use of superseded or voided pages.



MEETS THE AMERICANS WITH DISABILITIES ACT GUIDELINES
AND ICC ANSI A117.1 REQUIREMENTS FOR ACCESSIBLE AND
USABLE BUILDING FACILITIES-CHECK LOCAL CODES.



CADET® 3
Flushing System

© 2018 AS America Inc.

K2-27

Revised 1/13

CADET® 3 FloWise® ROUND FRONT TOILET

❑ **2829.128**

- Vitreous china
- Meets definition for HET (High Efficiency Toilet)
- High efficiency (4.8 Lpf/1.28 gpf)
- Meets EPA WaterSense® criteria
- EverClean® surface inhibits the growth of stain- and odor-causing bacteria, mold, and mildew on the surface
- Featuring the **Cadet® 3 Flushing System**
- Space saving round front siphon action jetted bowl
- Fully-glazed 2-1/8" trapway
- Generous 9" x 8" water surface area
- Close-coupled tank with flat tank cover for superior storage
- Oversized 3" flush valve with chemical resistant flapper
- Chrome trip lever
- Speed Connect® tank-to-bowl coupling system
- Sanitary dam on bowl with four point tank stabilization
- 2 color-matched bolt caps
- 100% factory flush tested
- 5 year warranty

❑ **3011.128** Round Front Bowl

❑ **3011.001** Round Front Universal Bowl

❑ **4021.128** Tank

Nominal Dimensions:

718 x 438 x 733mm (28-1/4" x 17-1/4" x 28-7/8")

Fixture only, seat and supply by others

Alternative Tank Configurations Available:

- ❑ **4021.513** Tank complete with Aquaguard Liner
- ❑ **4021.613** Tank complete with tank cover locking device
- ❑ **4021.713** Tank complete with Aquaguard Liner and tank cover locking device
- ❑ **4021.813** Tank complete with trip lever located on right side
- ❑ **4021.913** Tank complete with tank cover locking device and trip lever located on right side
- ❑ **4021.953** Tank complete with Aquaguard Liner, tank cover locking device and trip lever located on right side

Compliance Certifications -

Meets or Exceeds the Following Specifications:

- ASME A112.19.2-2008/CSA B45.1-08 for Vitreous China Fixtures
- US EPA WaterSense® Specification for HET's



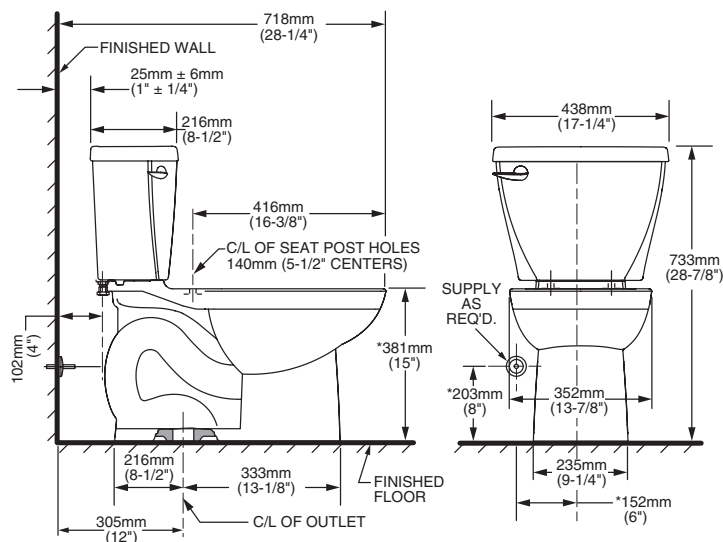
SEE REVERSE FOR ROUGHING-IN DIMENSIONS

To Be Specified:

- ❑ Color: ❑ White ❑ Bone ❑ Linen
- ❑ Seat: #5330.010 Round front Champion® Slow Close solid plastic seat and cover with easy lift off feature
- ❑ Seat: #5282.011 Round front EverClean® solid plastic seat and cover
- ❑ Seat: #5320.110 EverClean® Round Front Seat with Slow Close Snap-Off Hinges
- ❑ Supply with stop:



CADET® 3
Flushing System



NOTES:

THIS TOILET IS DESIGNED TO ROUGH-IN AT A MINIMUM DIMENSION OF 305MM (12") FROM FINISHED WALL TO C/L OF OUTLET.

SUPPLY NOT INCLUDED WITH FIXTURE AND MUST BE ORDERED SEPARATELY.

* DIMENSION SHOWN FOR LOCATION OF SUPPLY IS SUGGESTED.

IMPORTANT: Dimensions of fixtures are nominal and may vary within the range of tolerances established by ANSI Standard A112.19.2.

These measurements are subject to change or cancellation. No responsibility is assumed for use of superseded or voided pages.