

TOWN SQUARE® 5' x 42"

- ☐ **2748.018WC EverClean® Whirlpool System**
 - EverClean® System
 - Acrylic with fiberglass reinforcement
 - Pre-leveled tub bottom
 - Single speed pump with air switch on/off
 - Six multi-directional and adjustable jets
 - Two silent air volume controls
 - Quick connect Safe-T-Heater connection system (must order whirlpool heater separately)
 - Complete factory installed and tested whirlpool system
 - Undermount installation option
- ☐ **2748.048WC EcoSilent® Whirlpool**
 - Same as above but with EcoSilent® Whirlpool System
- ☐ **2748.048WC.K2 EcoSilent® Whirlpool with Chromatherapy**
 - Same as above but with LED lighting system
- ☐ **2748.068C EverClean® Air Bath**
 - Perfectly smooth air jets around tub perimeter
 - Double intensity lumbar back massage
 - EverClean System
 - Variable speed air blower with heater
 - Programmable automatic purge with timer
- ☐ **2748.068C.K2 EverClean® with Chromatherapy**
 - Same as above but with LED lighting system
- ☐ **2748.448WC.K2 EcoSilent® Combo Massage System**
 - EcoSilent Whirlpool System
 - EverClean Air Bath System
 - Chromatherapy LED lighting system
 - Factory installed in-line Whirlpool heater
- ☐ **2748.002 Bathing Pool**

Nominal Dimensions:

59-1/2" x 41-5/8" x 23"

(1511 x 1057 x 584mm)

American Standard whirlpools and air baths with EverClean® incorporate a safe and effective silver-ion antimicrobial additive right into the circulation piping to protect the pipes from mold, mildew, algae and fungus that could cause deterioration or staining of the pipes.

Compliance Certifications -

Meets or Exceeds the Following Specifications:

- Underwriters Laboratories - Hydromassage Bathtubs UL 1795
- ASME A112.19.7M for Whirlpool Appliances
- ANSI Z124.1 for Plastic Bathtubs
- ASTM E162 for Flammability
- NFPA 258 for Smoke Density



Components Required:

- ☐ Bath Filler*: (specify finish)
- ☐ Town Square Lever Drain: 1594.170

Custom Accessories Available:

- ☐ Safe-T-Heater Whirlpool Heater: 9075.120
- ☐ Tile Bead Kit: 751755-200
- ☐ Air Blower Remote Mounting Kit: 754678-201

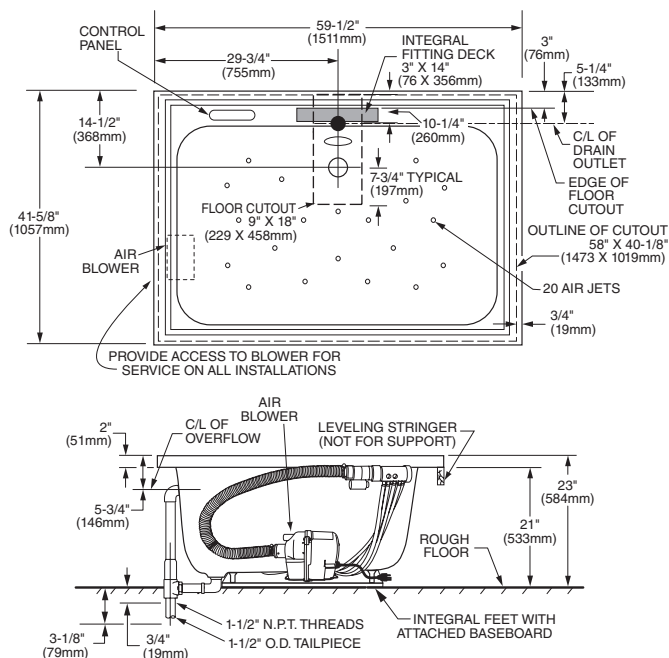
* See American Standard Faucet Selector

For color/finish availability and other faucet choices, please see the Product Selector and Pricing Guide.

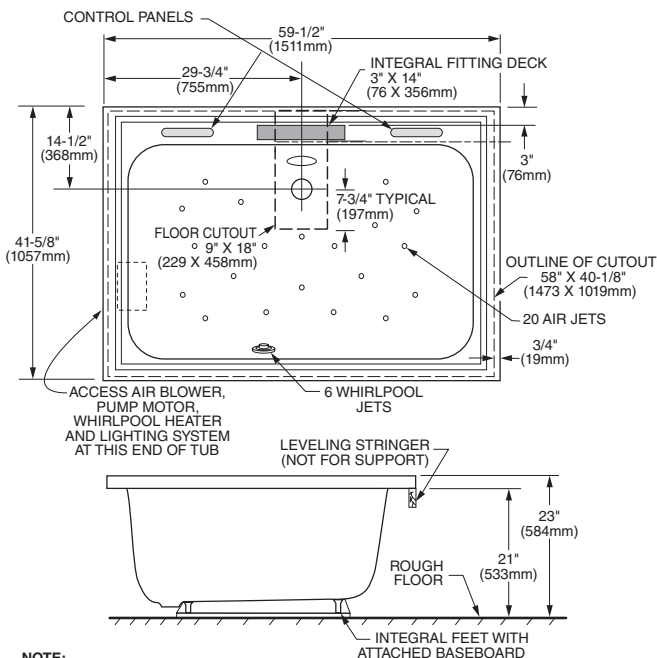
NOTE: Whirlpool Heater is designed to maintain water temperature during operation. It will not heat cold water to desired bathing temperature.

SEE REVERSE FOR ROUGHING-IN DIMENSIONS AND PRODUCT SPECIFICATIONS

AIR MESSAGE SYSTEM



COMBINATION SYSTEM



NOTE:
INSTALLER MUST PROVIDE 12" X 24" ACCESS OPENING FOR SERVICING AIR BLOWER, PUMP MOTOR, WHIRLPOOL HEATER, AND LIGHTING SYSTEM.
THIS MODEL INCLUDES A DRAIN ASSEMBLY. OTHER DRAIN ASSEMBLIES CANNOT BE USED. REVIEW DRAIN INSTALLATION DETAILS IN THE DOCUMENT TO FULLY UNDERSTAND FLOOR CUTOUT REQUIREMENTS.

GENERAL SPECIFICATIONS FOR 2748 AIR MESSAGE SYSTEM

INSTALLED SIZE _____ 59-1/2 x 41-5/8 x 23 In. (1511 x 1057 x 584mm)
WEIGHT _____ 110 Lbs. (50 Kg.)
WEIGHT w/WATER _____ 611 Lbs. (278 Kg.)
GAL. TO OVERFLOW _____ 60 Gal. (227 L)
BATHING WELL AT SUMP _____ 34 x 24 In. (864 x 610mm)
BATHING WELL AT RIM _____ 52 x 31 In. (1321 x 1321mm)
WATER DEPTH TO OVERFLOW _____ 12-1/2 In. (318mm)
FLOOR LOADING _____ 40 Lbs./Sq.Ft. (194 Kgs./Sq.m)
(PROJECTED AREA)
PTS. _____ 27.8
CUBE (FT³) _____ 45.4

ELECTRICAL SPECIFICATIONS

BLOWER _____ 9.5 AMPS, 120V.

GENERAL SPECIFICATIONS FOR 2748 COMBINATION SYSTEM

INSTALLED SIZE _____ 59-1/2 x 41-5/8 x 23 In. (1511 x 1057 x 584mm)
WEIGHT _____ 110 Lbs. (50 Kg.)
WEIGHT w/WATER _____ 611 Lbs. (278 Kg.)
GAL. TO OVERFLOW _____ 60 Gal. (227 L)
BATHING WELL AT SUMP _____ 34 x 24 In. (864 x 610mm)
BATHING WELL AT RIM _____ 52 x 31 In. (1321 x 1321mm)
WATER DEPTH TO OVERFLOW _____ 12-1/2 In. (318mm)
FLOOR LOADING _____ 29 Lbs./Sq.Ft. (144 Kgs./Sq.m)
(PROJECTED AREA)
PTS. _____ 27.8
CUBE (FT³) _____ 45.4

ELECTRICAL SPECIFICATIONS

ECOSILENT PUMP _____ 9.4 AMPS, 120V.
BLOWER _____ 9.5 AMPS, 120V.
HEATER _____ 12 AMPS, 120V.

NOTES:

BATH CAN BE INSTALLED EITHER ABOVE OR BELOW FLOOR LINE AS PIER, ISLAND OR PENINSULA TYPE INSTALLATION. SUMP OF BATH IS SUPPORTED BY INTEGRAL FEET. NO ADDITIONAL SUPPORT REQUIRED. ENCLOSING MATERIALS BY OTHERS.

● IF INSTALLING A DECK-MOUNTED FITTING, BEFORE DRILLING ANY HOLES: CHECK FOR INTERFERENCE WITH CIRCULATING SYSTEM PIPING AND DRAIN OVERFLOW. MOUNTING HOLES DRILLED BY INSTALLER.

OPTIONAL TILING BEAD KIT No. 751755-200 AVAILABLE.

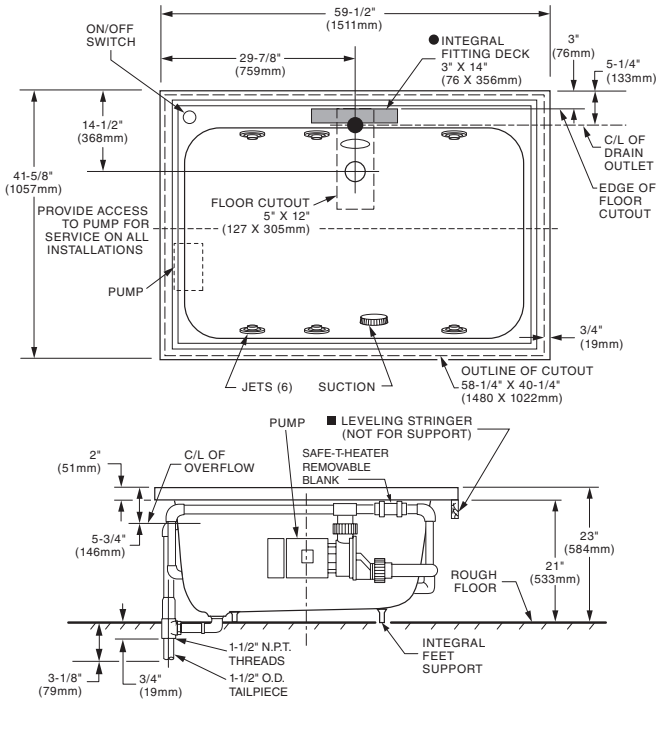
■ REFER TO INSTALLATION INSTRUCTIONS SUPPLIED WITH BATH FOR ADDITIONAL INFORMATION.

FITTINGS NOT INCLUDED AND MUST BE ORDERED SEPARATELY.

PROVIDE SUITABLE REINFORCEMENT FOR ALL SUPPORTS.

IMPORTANT: Dimensions of fixtures are nominal and may vary within the range of tolerances established by ANSI Standard Z124.1 / CSA Certified. These measurements are subject to change or cancellation. No responsibility is assumed for use of superseded or voided leaflet.

WHIRLPOOL



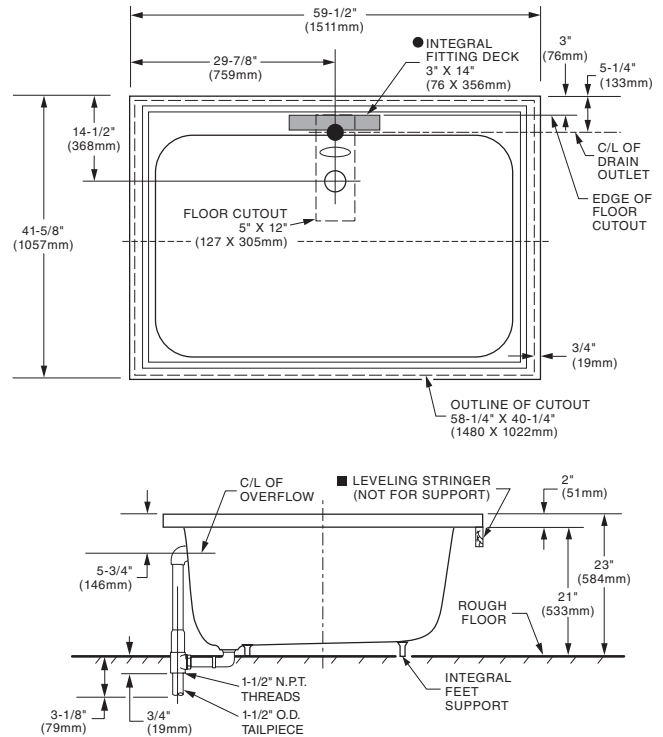
GENERAL SPECIFICATIONS FOR 2748 WHIRLPOOL

INSTALLED SIZE	59-1/2 x 41-5/8 x 23 In. (1511 x 1057 x 584mm)
WEIGHT	110 Lbs. (50 Kg.)
WEIGHT w/WATER	611 Lbs. (278 Kg.)
GAL. TO OVERFLOW	60 Gal. (227 L)
WHIRLPOOL MIN. OPERATING VOL.	55 Gal. (208 L)
BATHING WELL AT SUMP	34 x 24 In. (864 x 610mm)
BATHING WELL AT RIM	52 x 31 In. (1321 x 1321mm)
WATER DEPTH TO OVERFLOW	12-1/2 In. (318mm)
FLOOR LOADING (PROJECTED AREA)	40 Lbs./Sq.Ft. (194 Kgs./Sq.m)
PTS.	27.8
CUBE (FT ³)	45.4

WHIRLPOOL ELECTRICAL SPECIFICATIONS

EVERCLEAN PUMP	7.5 AMPS, 120V.
ECOSILENT PUMP	9.4 AMPS, 120V.

BATHING POOL



GENERAL SPECIFICATIONS FOR 2748 BATHING POOL

INSTALLED SIZE	59-1/2 x 41-5/8 x 23 In. (1511 x 1057 x 584mm)
WEIGHT	110 Lbs. (50 Kg.)
WEIGHT w/WATER	611 Lbs. (278 Kg.)
BATHING WELL AT SUMP	34 x 24 In. (864 x 610mm)
BATHING WELL AT RIM	52 x 31 In. (1321 x 1321mm)
WATER DEPTH TO OVERFLOW	12-1/2 In. (318mm)
FLOOR LOADING (PROJECTED AREA)	40 Lbs./Sq.Ft. (194 Kgs./Sq.m)
PTS.	27.8
CUBE (FT ³)	45.4

NOTES:

BATH CAN BE INSTALLED EITHER ABOVE OR BELOW FLOOR LINE AS PIER, ISLAND OR PENINSULA TYPE INSTALLATION. SUMP OF BATH IS SUPPORTED BY INTEGRAL FEET. NO ADDITIONAL SUPPORT REQUIRED. ENCLOSING MATERIAL BY OTHERS.

■ REFER TO INSTALLATION INSTRUCTIONS SUPPLIED WITH AIR BATH, DECK MOUNTED SPOUT AND INTEGRATED BATH FILLER FOR ADDITIONAL INFORMATION.

OPTIONAL 3-WALL TILING BEAD KIT MODEL No. 751755-100 AND 6FT-APRON MODEL No. 9271.019 MUST BE ORDERED SEPARATELY

PROVIDE SUITABLE REINFORCEMENT FOR ALL SUPPORTS.

IMPORTANT: Dimensions of fixtures are nominal and may vary within the range of tolerances established by ANSI Standard Z124.1 and A112.19.7. These measurements are subject to change or cancellation. No responsibility is assumed for use of superseded or voided leaflet.