

**Advanced Clean AC 1.0 SpaLet® Seat With
Side Panel Operation**

❑ 8013A80GPC-020

- Simple design for use with most elongated bowls
- Slow-close seat and lid
- One button push that allows the user to easily detach the seat for convenient cleaning of hard-to-reach areas
- One-touch power save (8 hours)
- Two independent self-cleaning water spray nozzles for front and rear cleansing
- 5 nozzle positions to personalize your cleansing experience
- The heated seat function has 5 levels: 3 preset and 2 additional customer settings. Temperature can be easily adjusted for comfort
- The deodorizer uses active charcoal to reduce the odors in the bowl. Operation begins once the user sits down on the seat and continues for 5 seconds after the user stands up
- The massage feature alternates between strong and mild sprays, creating a massaging effect that indulges the user. Posterior spray only
- Self-cleaning nozzles are rinsed with water before and after cleansing
- Power Cord is 39" in length

Nominal Dimensions:

21-1/16" x 18-9/16" x 6-7/8"
(536 x 472 x 173mm)

Available Spare Parts

- **760241-200.0070A** Mounting Kit
- **760240-200.0070A** Bidet Shield

Compliance Certifications -

Meets or Exceeds the Following Specifications:

- ASME A112.4.2/CSA B45.16
- Personal Hygiene and Health Care Appliances – UL 1431
- Motor-operated appliances (household and commercial) - CSA C22.2 No. 68-14
- Update No. 3
- Household Cooking and Liquid-Heating Appliances - CSA C22.2 No. 64-14

Certifications:

- IAPMO(cUPC)
- State of Massachusetts

Code Compliance:

- UPC
- IPC
- NSPC
- NPC Canada

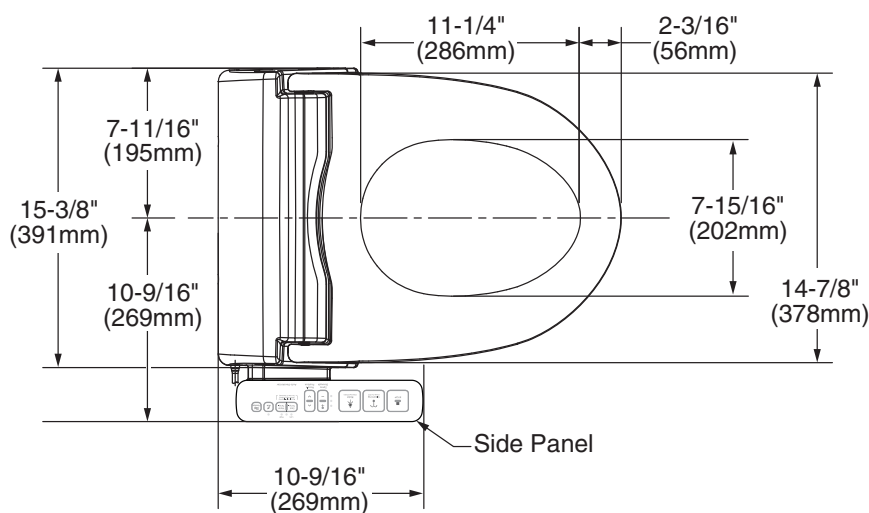
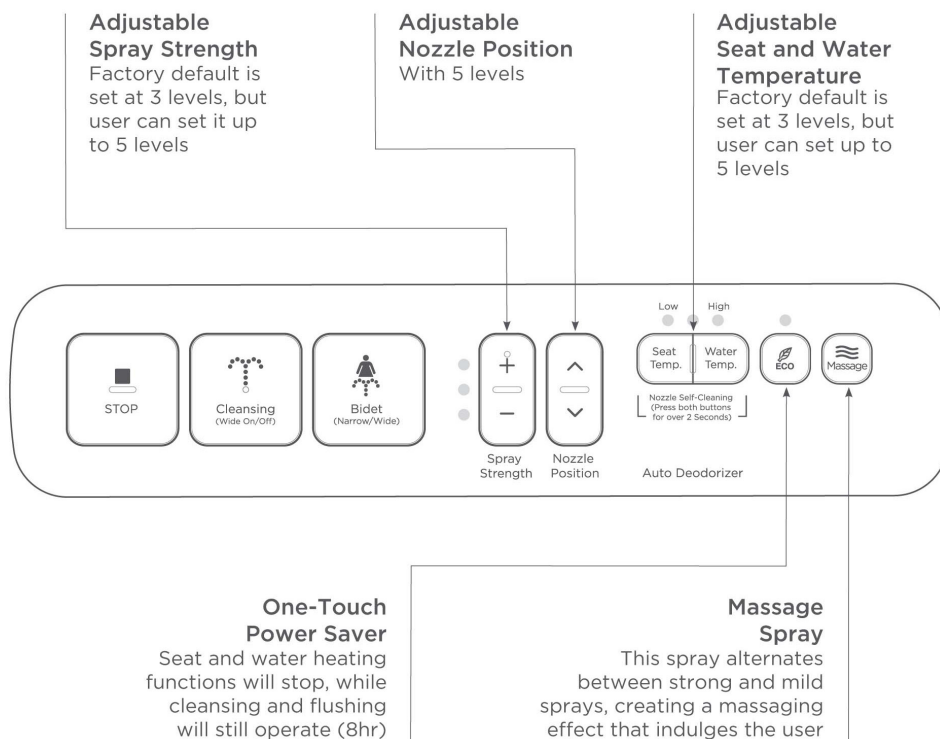


SEE REVERSE FOR ROUGHING-IN DIMENSIONS
AND PRODUCT SPECIFICATIONS

To Be Specified:

❑ Color: ❑ 020 White

SIDE PANEL



**CADET® 3 RIGHT HEIGHT®
ELONGATED TOILET**

270AA.101

- Features the **Cadet® Flushing System**
- Vitreous china
- High Efficiency Toilet (HET), ultra-low consumption (4.8 Lpf/1.28 gpf) utilizes 20% less water
- PowerWash® rim scrubs bowl with each flush
- Includes color match bowl caps
- EverClean® surface included
- 3" flush valve
- 2-1/8" trapway
- 16-1/2" rim height for accessible applications
- 12" (305mm) rough-in
- Generous 9" x 8" water surface area
- Chrome finish trip lever is supplied
- 1,000g MaP Score** at 1.28 gpf
- 5 year warranty

3717A.001 Right Height® Elongated Bowl

4021.101N Tank

Nominal Dimensions:

768 x 441 x 768mm (30-1/4" x 17-3/8" x 30-1/4")

Fixture only, seat and supply sold separately

Compliance Certifications -

Meets or Exceeds the Following Specifications:

- ASME A112.19.2-2008/CSA B45.1-08 for Vitreous China Fixtures
- US EPA WaterSense® Specification for HETs

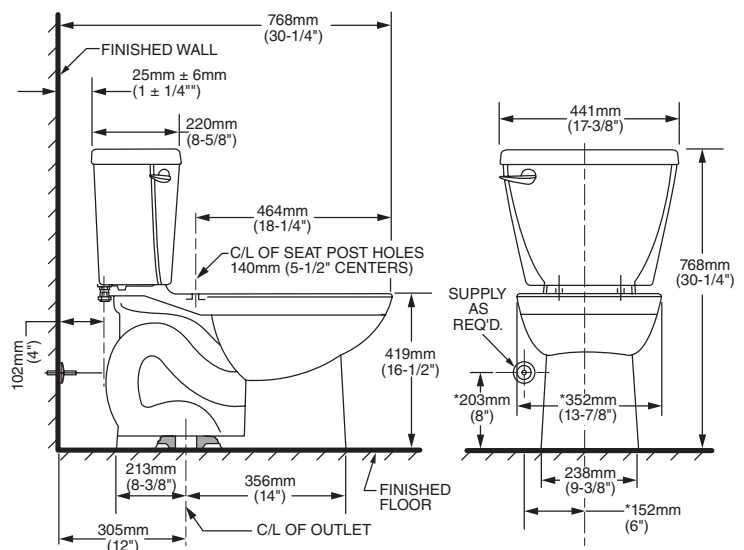
** Maximum Performance (MaP) testing performed by IAPMO R&T Lab. MaP Report conducted by Veritec Consulting, Inc. and Koeller and Company.

To Be Specified:

- ☐ Color: ☐ White ☐ Bone ☐ Linen ☐ Black
- ☐ Seat: #5321.110 EverClean® Elongated Seat with Slow Close Snap-Off Hinges
- ☐ Supply with stop:



MEETS THE AMERICANS WITH DISABILITIES ACT GUIDELINES AND ANSI A117.1 REQUIREMENTS FOR ACCESSIBLE AND USABLE BUILDING FACILITIES-CHECK LOCAL CODES.



NOTES:

THIS TOILET IS DESIGNED TO ROUGH-IN AT A MINIMUM DIMENSION OF 305MM (12") FROM FINISHED WALL TO C/L OF OUTLET. SUPPLY NOT INCLUDED WITH FIXTURE AND MUST BE ORDERED SEPARATELY. * DIMENSION SHOWN FOR LOCATION OF SUPPLY IS SUGGESTED.

IMPORTANT: Dimensions of fixtures are nominal and may vary within the range of tolerances established by ANSI Standard A112.19.2. These measurements are subject to change or cancellation. No responsibility is assumed for use of superseded or voided pages.



CADET® 3
Flushing System