



KEEFE®
WIDESPREAD LAVATORY
FAUCET



- Recessed vertical aerator
- Sculptural cast brass spout and side valves
- Ceramic disc valve cartridges
- 8" centers
- Flexible hose connections for 6"-12" installations
- Speed Connect® with 1-1/4" drain
- Lead Free—faucet contains $\leq 0.25\%$ total lead content by weighted volume
- Low flow rate: 1.2 gpm (4.5 L/min)
- Red and Blue (hot/cold) indicator markings on handles

CODES AND STANDARDS

Meets or Exceeds ASME A112.18.1/ CSA B125.1,
NSF 61/Section 9

EPA WaterSense® Certified


Certified Compliant with $\leq 0.25\%$ Weighted
Average Lead Content Regulations

☒ CEC and CALGreen® Compliant

AVAILABLE FINISHES	FINISH CODE	DESCRIPTION	PRODUCT NUMBER
Polished Chrome	100	Widespread Faucet	D35104800RB.XXX
Brushed Nickel	144		

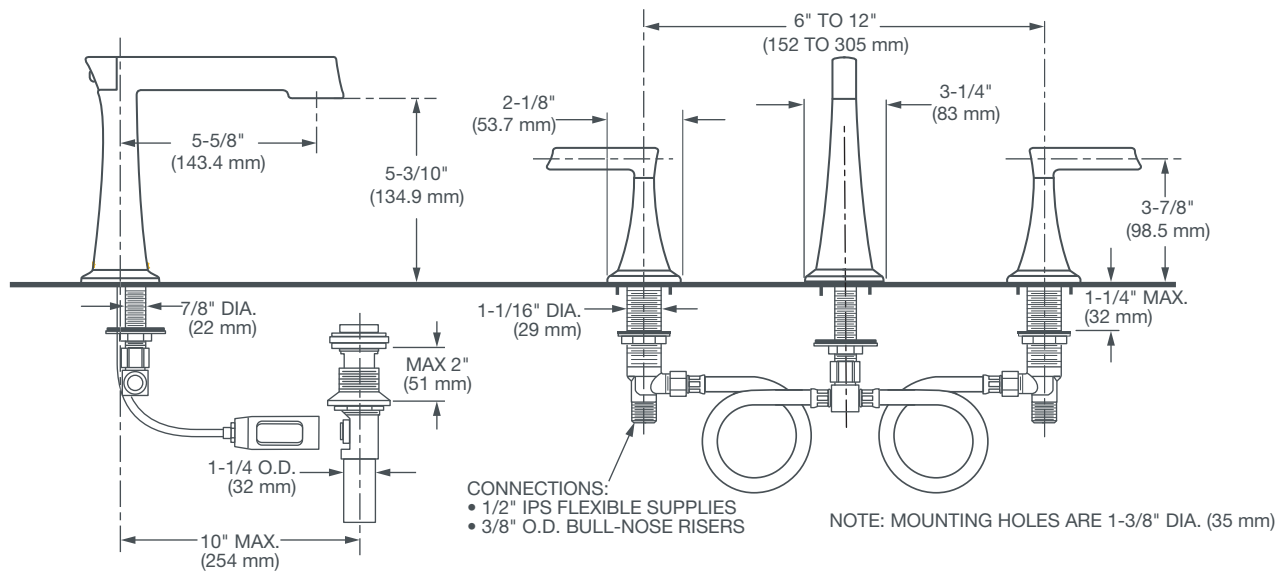
ROUGH-IN DIAGRAM
SHOWN ON NEXT PAGE

☒ CALGreen® is a registered trademark of
California Building Standards Commission.

 Meets the Americans with Disabilities Act
Guidelines and ANSI A117.1 Requirements
for the physically challenged.

KEEFE®

WIDESPREAD LAVATORY FAUCET



IMPORTANT: These measurements are subject to change or cancellation.
No responsibility is assumed for use of superseded or voided pages.

PART OF **LIXIL**