



# CONTEMPORARY COLD TAP

## KITCHEN FAUCET



- Compatible with most filtration systems
- Single lever control
- Cold water only
- ADA qualified
- Lead Free - faucet contains  $\leq 0.25\%$  total lead content by weighted volume
- Maximum flow rate: 1.5 gpm (5.7 L/min)

### CODES AND STANDARDS

Meets or Exceeds ASME A112.18.1/  
CSA B125.1/NSF 61/Section 9

Certified Compliant with  $\leq 0.25\%$  Weighted  
Average Lead Content Regulations

CEC and CALGreen® Compliant

### AVAILABLE FINISHES

Polished Chrome  
Ultra Steel

### FINISH CODE

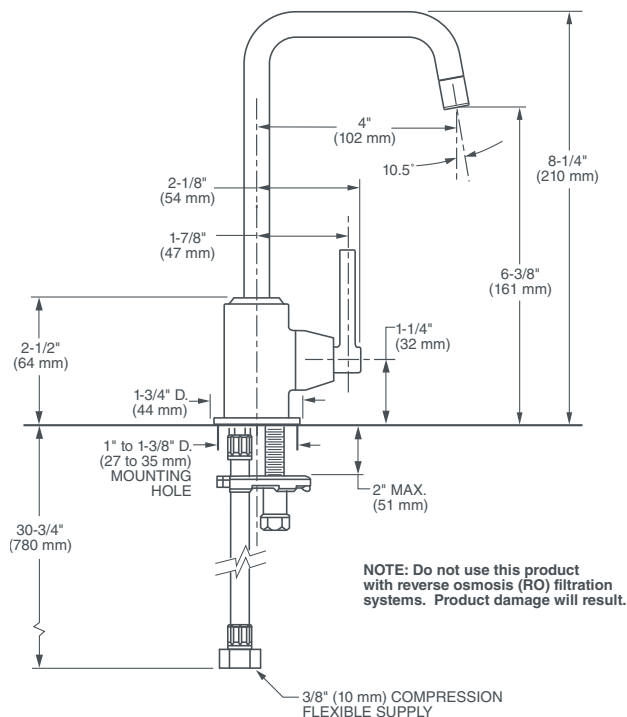
100  
355

### DESCRIPTION

Contemporary Cold Tap  
Kitchen Faucet

### PRODUCT NUMBER

D35401700.XXX



**IMPORTANT:** These measurements are subject to change or cancellation.  
No responsibility is assumed for use of superseded or voided pages.

PART OF **LIXIL**

©2018 AS America Inc.

5/18

CALGreen® is a registered trademark of California Building Standards Commission.



Meets the Americans with Disabilities Act Guidelines and ANSI A117.1 Requirements for the physically challenged.

www.d xv.com