

**CADET® 3 FloWise® ROUND FRONT  
TOTAL TOILET**

**2852.128**

- Vitreous china
- Meets definition for HET (High Efficiency Toilet)
- High Efficiency (1.28 gpf/4.8 Lpf)
- Meets EPA WaterSense® criteria
- 12" Rough-in (305mm)
- EverClean® surface inhibits the growth of stain and odor causing bacteria, mold and mildew on the surface
- Features the **Cadet® 3 Flushing System**
- Space saving round front siphon action jetted bowl
- Fully-glazed 2-1/8" trapway with 2" ball pass
- Generous 9" x 8" water surface area
- Close-coupled tank with flat tank cover for superior storage
- Oversized 3" flush valve with chemical resistant flapper
- Chrome trip lever
- Speed Connect® tank-to-bowl coupling system
- Sanitary dam on bowl with four point tank stabilization
- 2 color-matched bolt caps
- Color matched solid plastic seat and cover with EverClean® surface
- Wax ring gasket with closet bolts
- 100% factory flush tested
- 5 year warranty

**3011.128 Round Front bowl**

**3011.001 Round Front Universal bowl**

**4021.128 Tank**

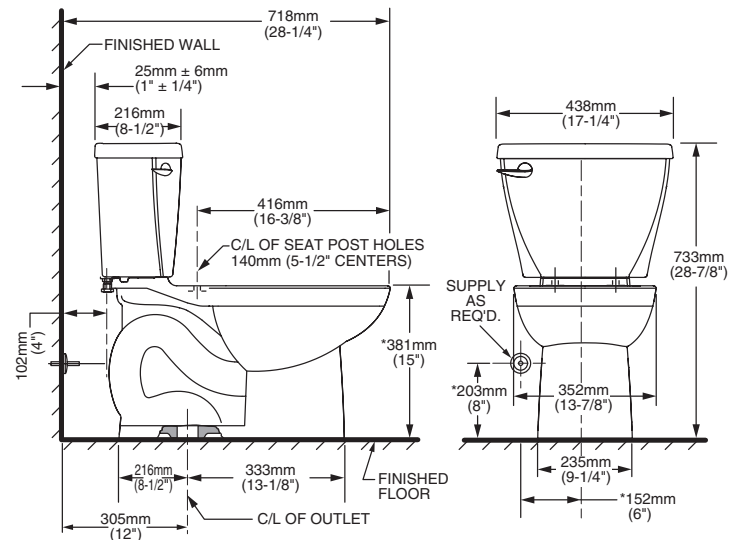
**Nominal Dimensions:**

28-1/4" x 17-1/4" x 28-7/8"  
(718 x 438 x 733mm)

**Compliance Certifications -**

**Meets or Exceeds the Following Specifications:**

- ASME A112.19.2-2008/CSA B45.1-08 for Vitreous China Fixtures
- US EPA WaterSense® Specification for HET's



**NOTES:**

THIS TOILET IS DESIGNED TO ROUGH-IN AT A MINIMUM DIMENSION OF 305MM (12") FROM FINISHED WALL TO C/L OF OUTLET. SUPPLY NOT INCLUDED WITH FIXTURE AND MUST BE ORDERED SEPARATELY.

\* DIMENSION SHOWN FOR LOCATION OF SUPPLY IS SUGGESTED.

**IMPORTANT:** Dimensions of fixtures are nominal and may vary within the range of tolerances established by ANSI Standard A112.19.2.

These measurements are subject to change or cancellation. No responsibility is assumed for use of superseded or voided pages.

**To Be Specified:**

- ☐ Color: ☐ White ☐ Bone
- ☐ Supply with stop:

**CADET® 3**  
Flushing System

The Nature  
Conservancy



Protecting nature. Preserving life.™

