

13 275

CONCETTO™

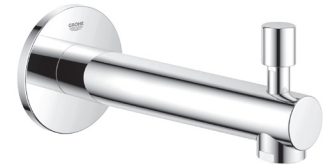
DIVERTER TUB SPOUT

Pure Freude
an Wasser



STANDARD SPECIFICATION:

- GROHE StarLight®
- 6 11/16" Spout reach
- Wall mount
- 1/2" Inlet
- Push-down diverter activation



PRODUCT FEATURES:



CERTIFICATIONS:



- ADA
- CEC Certified
- Massachusetts Plumbing Board Approved
- CSA B125.1
- ASME A112.18.1

AVAILABLE FINISHES:

- 13275001**  GROHE StarLight® Chrome
- 132752431**  Matte Black
- 13275A01**  Hard Graphite
- 13275EN1**  Brushed Nickel InfinityFinish™
- 13275GN1**  Brushed Cool Sunrise

NOTE: Install this product according to the installation guide. ADA, CSA compliant when installed to the specific requirements of these regulations.

We reserve the right to make revisions without notice to product specifications. 04-17-2023

US
Tel: 1.630.582.7711 Fax: 1.630.582.7722
For the most current Specification Sheet,
go to www.grohe.us.

Canada
Tel: 1.888.644.7643 Fax: 1.905.366.2071
For the most current Specification Sheet,
go to www.grohe.ca.

PART OF LIXIL

13 275

CONCETTO™

DIVERTER TUB SPOUT

*Pure Freude
an Wasser*



TECHNICAL DATA:

Product Height	94 mm
Product Length	187 mm
Product Width	80 mm
Fitting Spout Reach	171 mm

