

EVERCLEAN 5' x 32" WHIRLPOOL

Comfortable bathing design with form-fitted backrest and molded-in armrests

☐ **Model #2732LC Whirlpool**

- Acrylic with fiberglass reinforcement
- EverClean system*
- Factory installed and tested whirlpool system
- Single speed, self-draining pump/motor
- Six multi-directional color-coordinated Clean Jets™ including two in back rest area
- Includes Deep Soak® overflow adaptor kit (753174-150)
- One color-coordinated air volume control
- Side-mounted, color-coordinated air switch On/Off control
- Dual, molded-in arm rests
- Heater blank included
- E-Z Install™ heater connection system included on white color model only (heater must be ordered separately)
- Must order bath drain (sold separately)

* American Standard whirlpools with EverClean incorporate a patented antimicrobial additive molded directly into the water circulation piping to inhibit the growth of mold and mildew on the pipes.

Nominal Dimensions:

60" x 32-3/4" x 19-3/4"
(1524 x 832 x 502mm)

Compliance Certifications -

Meets or Exceeds the Following Specifications:

- Underwriters Laboratories - Hydromassage Bathtubs UL 1795
- ASME A112.19.7M for Whirlpool Appliances
- ANSI Z124.1 for Plastic Bathtubs
- ASTM E162 for Flammability
- NFPA 258 for Smoke Density

SEE REVERSE FOR ROUGHING-IN DIMENSIONS
AND PRODUCT SPECIFICATIONS



Components Required:

- ☐ Bath Filler**: (specify finish)
- ☐ Bath Drain: 1583.470.XXX (specify color/finish)
(colors/finishes other than white)
OR 1599.500.020 (white only)

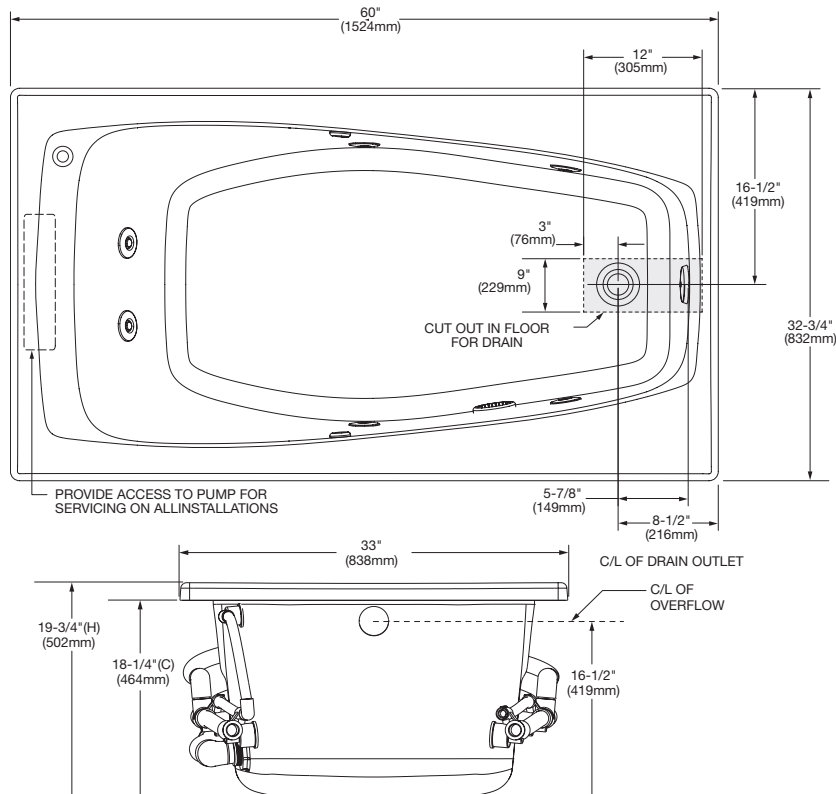
Optional Components:

- ☐ 5 Foot EverClean Apron: 9261.019 (specify color)
- ☐ Universal Tile Bead Kit: 751755-100
- ☐ EZ-INSTALL Whirlpool Heater - EZHEAT-100

** See American Standard Faucet Selector

For color/finish availability and other faucet choices, please see the Product Selector and Pricing Guide.

NOTE: E-Z-Install Whirlpool Heater is designed to maintain water temperature during operation. It will not heat cold water to desired bathing temperature.



GENERAL SPECIFICATIONS FOR 2732LC WHIRLPOOL

INSTALLED SIZE	60 x 32-3/4 x 19-3/4 In. (1524 x 832 x 502mm)
WEIGHT	77 Lbs. (35 Kg.)
WEIGHT w/WATER	536 Lbs. (243 Kg.)
GAL. TO OVERFLOW	55 Gal. (208 L.)
MIN. OPERATING GAL.	47 Gal. (155 L.)
BATHING WELL AT SUMP	40-1/2 x 20-1/2 In. (1029mm x 521mm)
BATHING WELL AT RIM	52-1/2 x 26-1/2 In. (1334mm x 673mm)
WATER DEPTH TO OVERFLOW	15-3/4 In. (400mm)
FLOOR LOADING	43 Lbs./Sq. Ft. (187 Kgs/Sq. m.) (PROJECTED AREA)

WHIRLPOOL ELECTRICAL SPECIFICATIONS

PUMP	1.25 HPR, 9.7 AMPS, 120V.
------	---------------------------

NOTES:

BATH CAN BE INSTALLED EITHER ABOVE OR BELOW FLOOR LINE AS PIER, ISLAND, OR PENINSULA TYPE INSTALLATION. SUPPORT OF BATH BY SUMP BEDDING. SUPPORT AND ENCLOSING MATERIAL BY OTHERS.

■ REFER TO INSTALLATION INSTRUCTIONS SUPPLIED WITH WHIRLPOOL FOR ADDITIONAL INFORMATION.

OPTIONAL 3 WALL TILING BEAD. KIT AND APRON NO. 9261.019 AVAILABLE AND MUST BE ORDERED SEPARATELY.

FITTINGS NOT INCLUDED AND MUST BE ORDERED SEPARATELY.

PROVIDE SUITABLE REINFORCEMENT FOR ALL SUPPORTS.

IMPORTANT: Dimensions of fixtures are nominal and may vary within the range of tolerances established by ANSI Standard Z124.1. These measurements are subject to change or cancellation. No responsibility is assumed for use of superseded or voided pages.