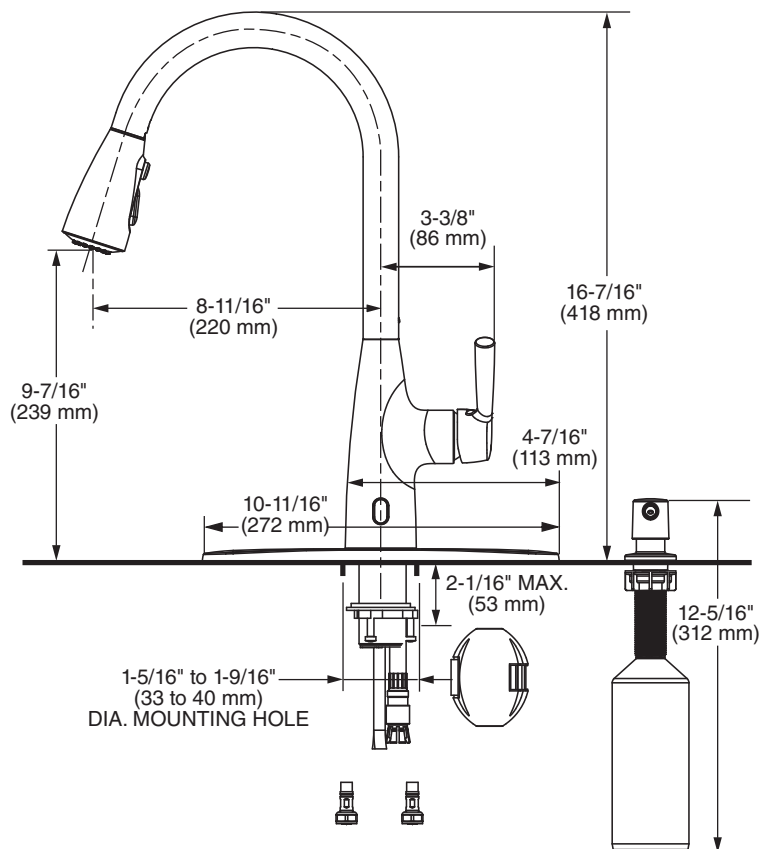


MODEL NUMBER:

□ 7418381 Pull-Down Kitchen Faucet



GENERAL DESCRIPTION:

1-Handle kitchen faucet featuring metal swivel spout and two function spray head, plus pause feature. Includes Re-Trax Retraction System. 28 mm ceramic disc valve cartridge, metal body and ADA metal lever handle. Includes flexible braided 35" supply hoses with 3/8" compression connections. Durable braided nylon spray hose is complete with two integral check valves. Maximum flow rate is 1.8 gpm / 6.8 L / min. Metal mounting shank with metal fixation ring. Fitting can be mounted with or without included deckplate.



ADA COMPLIANT

PRODUCT FEATURES:

Selectronic® Hands-Free Technology: Featuring a front facing wave on/off IR sensor with an automatic safety shut off after 2 minutes.

Ceramic Disc Valve Cartridge: Assures smooth, precise valve control and a lifetime of drip-free, maintenance-free performance.

Memory Position Valving: Allows user to turn valve on and off at preferred temperature setting without readjusting handle position each time.

Installation Options: Faucet can be installed with or without deck plate (escutcheon).

Pull-Down Spray: Features Adjustable spray pattern of stream to spray and includes Pause function.

Integral Check Valves: Prevents back flow.

Choice of Finishes: Choice of Polished Chrome, Stainless Steel (PVD), or Matte Black.

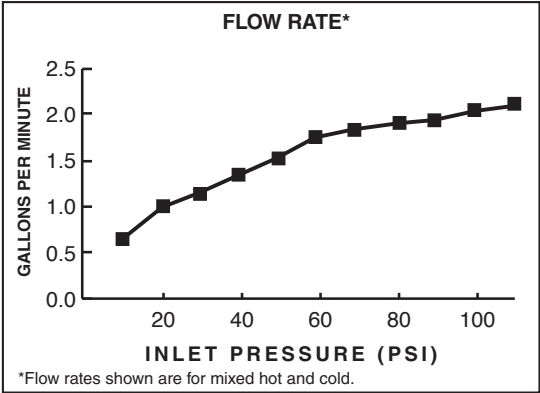
SUGGESTED SPECIFICATION:

Single control kitchen faucet shall feature a metal lever handle and pull-down spray. Shall feature Re-Trax Retraction System. Shall also feature washerless ceramic disc valve cartridge, flexible supply hoses and two integral check valves. Fitting shall be American Standard Model # 7418381._____.

CODES AND STANDARDS

These products meet or exceed the following codes and standards:

- ANSI A117.1
- ASME A112.18.1
- CSA B125.1
- NSF/ANSI/CAN 61: Q<1
- NSF/ANSI/CAN 372



Product Number	Description	Finish Options		
		Polished Chrome	PVD Stainless Steel	Matte Black
		002	075	243
7418381	Pull-Down Kitchen Faucet with Selectronic® Hands-Free Technology			

 Meets the American Disabilities Act Guidelines and **ANSI A117.1** Requirements for the physically challenged.