

**RELIANT® ROUND FRONT 10" ROUGH  
COMPLETE TOILET**

❑ **3332DB101CR**

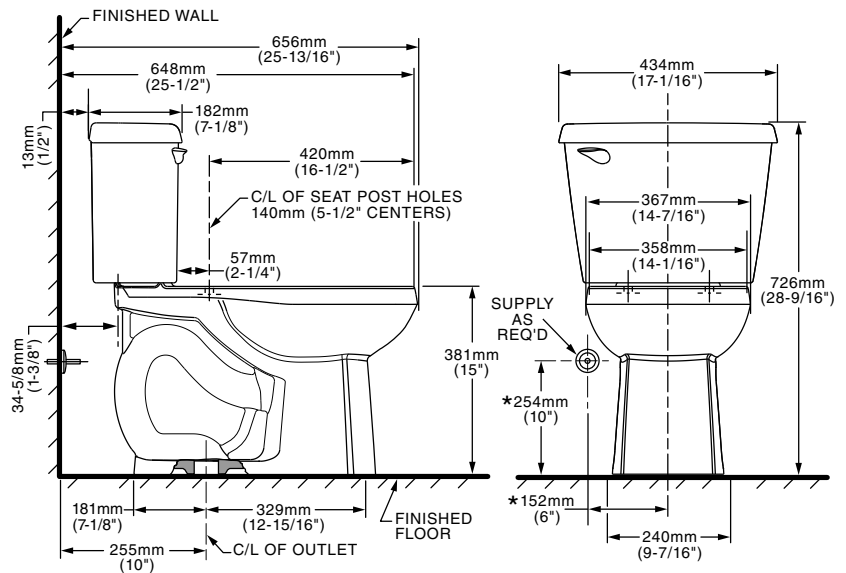
- Vitreous china
- High Efficiency Toilet (HET), consumption (4.8 Lpf/1.28 gpf), utilizes 20% less water
- Meets EPA WaterSense® criteria
- MaP Score 600g HET
- Includes color matched bolt caps
- 2" flush valve
- 2" trapway
- 10" (254mm) rough-in
- Generous 9" x 8" water surface area helps prevent dirt from sticking to the bowl
- Chrome-plated handle is supplied
- Slow close seat included
- 2 year warranty



**Nominal Dimensions:**

656 x 434 x 726mm  
(25-13/16" x 17-1/16" x 28-9/16")

Supply line sold separately



**Compliance Certifications -**

**Meets or Exceeds the Following Specifications:**

- ASME A112.19.2/CSA B45.1-08 for Vitreous China Fixtures
- US EPA WaterSense® Specification for HETs

**NOTES:**

THIS TOILET IS DESIGNED TO ROUGH-IN AT A MINIMUM DIMENSION OF 254MM (10") FROM FINISHED WALL TO C/L OF OUTLET. SUPPLY NOT INCLUDED WITH FIXTURE AND MUST BE ORDERED SEPARATELY. \* DIMENSION SHOWN FOR LOCATION OF SUPPLY IS SUGGESTED.

**IMPORTANT:** Dimensions of fixtures are nominal and may vary within the range of tolerances established by ANSI Standard A112.19.2. These measurements are subject to change or cancellation. No responsibility is assumed for use of superseded or voided pages.

**To Be Specified:**

- ❑ Color: ❑ White ❑ Bone
- ❑ Supply with stop:



WATER  
EFFICIENT



EPA  
WATERSENSE®  
CERTIFIED