

MODEL NUMBER:

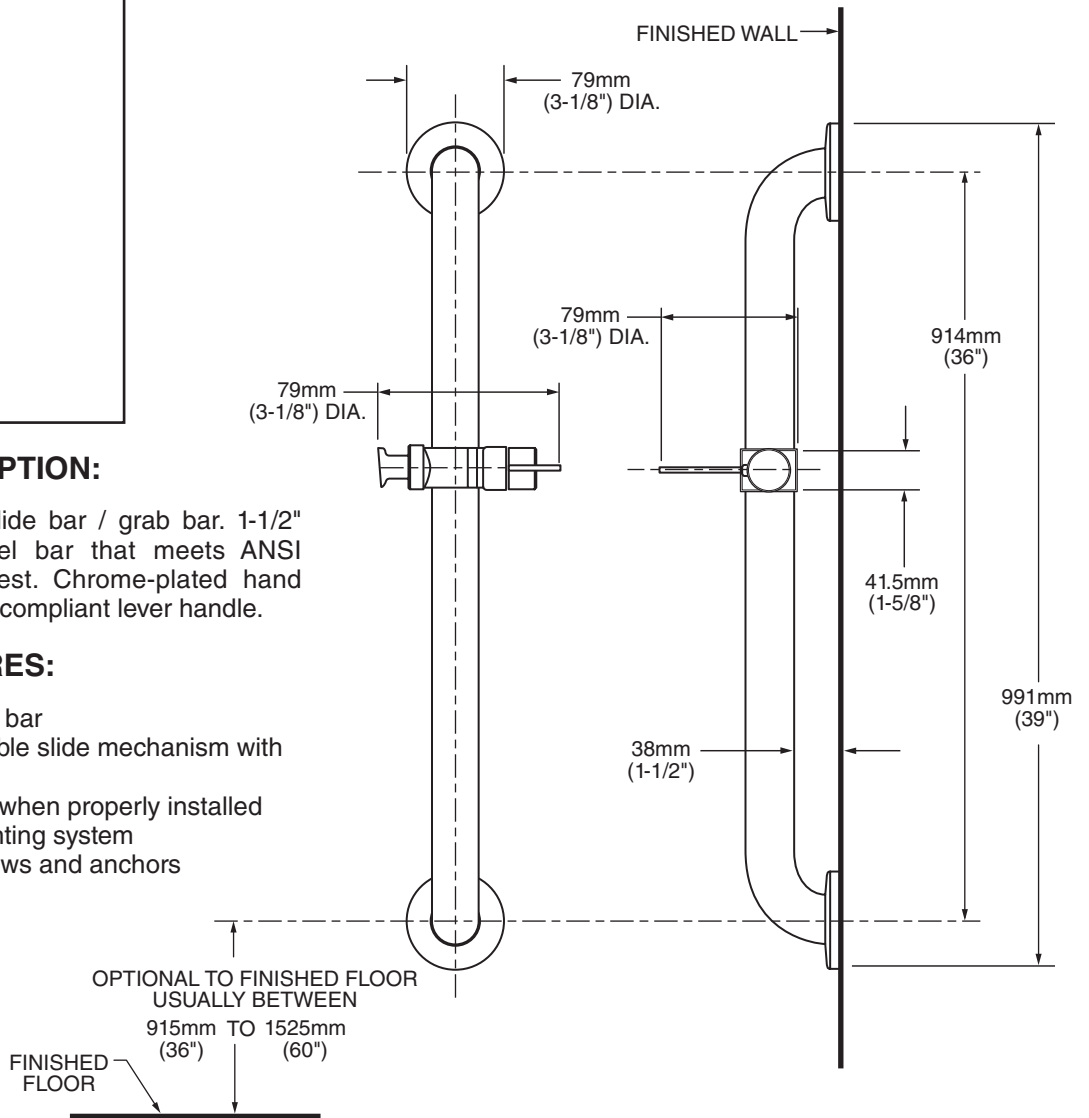
- ❑ **1662.236 Slide / Grab Bar**
36" length. 1-1/2" diameter stainless steel bar.
Chrome-plated hand shower holder.

GENERAL DESCRIPTION:

36" long combination slide bar / grab bar. 1-1/2" diameter stainless steel bar that meets ANSI standard 250 lb pull test. Chrome-plated hand shower holder with ADA compliant lever handle.

PRODUCT FEATURES:

- 36" (914 mm) stainless bar
- Chrome-plated adjustable slide mechanism with ADA compliant lever
- Withstands 250 lb. pull when properly installed
- Concealed screw mounting system
- Includes mounting screws and anchors



 Meets the American Disabilities Act Guidelines and **ANSI A117.1** Requirements for the physically challenged.

PART OF LIXIL

SUGGESTED SPECIFICATION:

This slide / grab bar will feature a 1-1/2" diameter stainless steel bar that meets the ANSI standard 250 lbs. pull-test for grab bars. Shall also chrome-plated hand shower holder with ADA-compliant lever handle for height adjustment. Fitting shall be American Standard Model # 1662.236.002.