

**Champion®4 Chair Height
Elongated Complete Toilet**

767AA101

- Features Champion® Flushing System that prevents clogs and will flush an entire bucket of golf balls
- Vitreous china made High Efficiency Toilet (HET), ultra-low consumption (1.28 gpf/4.8 Lpf), utilizes 20% less water and meets EPA WaterSense® Criteria
- Generous 9" x 8" water surface area with PowerWash® rim that scrubs the bowl with each flush
- 4" piston-action Accelerator™ flush valve with fully-glazed 2-3/8" trapway
- 12" rough-in toilet with 16-1/2" rim chair height bowl for accessible applications
- Includes no-tools, EZ-Install floor bolts, wax ring, and color match bowl caps kit
- Includes EverClean® surface that inhibits the growth of bacteria, mold and mildew
- Includes sturdy, slow-close seat that never slams
- Chrome finish trip lever is supplied (other finishes available as special order)
- Obtains best 1,000g MaP flush score** at 1.28gpf
- Industry-leading lifetime warranty on chinaware, 10 year warranty on all mechanical parts, and 1 year warranty on seat

Nominal Dimensions:

30-1/4" x 17-3/8" x 30-15/16"
(768 x 441 x 786 mm)

Includes fixture, toilet seat, wax ring and bowl bolts.
Water supply line by others.

Compliance Certifications -

Meets or Exceeds the Following Specifications:

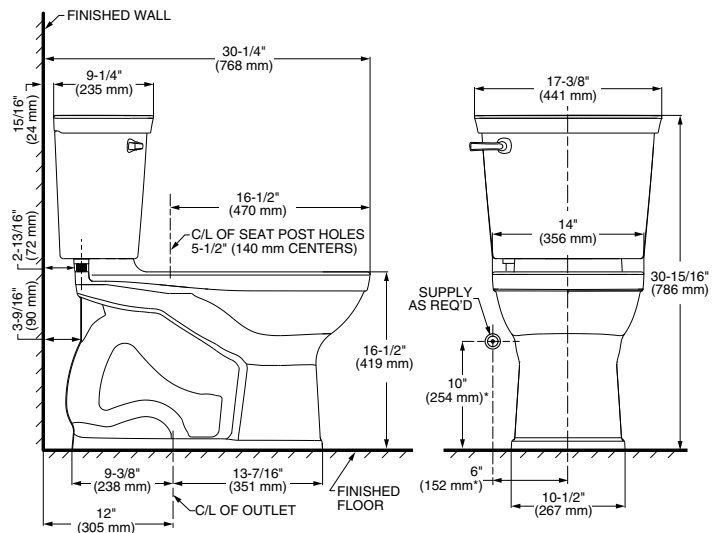
- ASME A112.19.2M/CSA B45.1 for Vitreous China Fixtures
- US EPA WaterSense® Specification for HETs

To Be Specified:

- ☐ Color: ☐ White
- ☐ Supply with stop:



MEETS THE AMERICANS WITH DISABILITIES ACT GUIDELINES
AND ICC ANSI A117.1 REQUIREMENTS FOR ACCESSIBLE AND
USABLE BUILDING FACILITIES-CHECK LOCAL CODES.



NOTES:

THIS TOILET IS DESIGNED TO ROUGH-IN AT A MINIMUM DIMENSION OF 305MM (12") FROM FINISHED WALL TO C/L OF OUTLET. SUPPLY NOT INCLUDED WITH FIXTURE AND MUST BE ORDERED SEPARATELY.

* DIMENSION SHOWN FOR LOCATION OF SUPPLY IS SUGGESTED.

IMPORTANT: Dimensions of fixtures are nominal and may vary within the range of tolerances established by ANSI Standard A112.19.2. These measurements are subject to change or cancellation. No responsibility is assumed for use of superseded or voided pages.

** Maximum Performance (MaP) testing performed by IAPMO R&T Lab. MaP Report conducted by Veritec Consulting, Inc. and Koeller and Company.



EPA
WATERSENSE®
CERTIFIED