

### EVERCLEAN 5' x 36" WHIRLPOOL

Comfortable bathing design with form-fitted backrest and molded-in armrests.

#### ☐ Model# 2771LC (specify color) Whirlpool

- Acrylic with fiberglass reinforcement
- EverClean System\*
- Single speed self-draining pump/motor with dry run seal
- Eight flow-adjustable Clean Jets™
  - Two fully adjustable Clean Jets Hi-Flo jets
  - Six flow adjustable Clean Jets including two in the lumbar area
- Two side-mounted silent air volume controls
- Side-mounted On/Off control
- Ledge mounted overflow design for maximum water depth
- Must order Deep Soak® Max Drain (sold separately)
- Complete factory installed and tested whirlpool system
- Pre-leveled tub bottom
- Designed with undermount installation option
- E-Z Install™ heater connection system (heater must be ordered separately)

\* American Standard whirlpools with EverClean incorporate a patented antimicrobial additive molded directly into the water circulation piping to inhibit the growth of mold and mildew on the pipes.

#### ☐ Model# 2771L.002 Bathing Pool Only

#### ☐ Model# 2771L.068C Air Bath

- EverClean system\*
- Full body massage with 24 strategically placed air jets
- Variable speed air blower with heater
- Automatic purge with timer

### Nominal Dimensions:

60" x 36" x 21-1/2"  
(1524 x 914 x 546mm)

### Compliance Certifications -

#### Meets or Exceeds the Following Specifications:

- Underwriters Laboratories - Hydromassage Bathtubs UL 1795
- ASME A112.19.7M for Whirlpool Appliances
- ANSI Z124.1 for Plastic Bathtubs
- ASTM E162 for Flammability
- NFPA 258 for Smoke Density



### Components Required:

- ☐ Bath Filler\*\*: (specify finish)
- ☐ Bath Drain: 1599.500.020 (white only)  
1599.205.XXX (colors other than white)  
**OR** Deep Soak Max 1640.305.XXX  
(specify finish) (bathing pool only)

### Optional Components:

- ☐ Five Foot EverClean Apron: 9261.019 (specify color)
- ☐ E-Z-Install Whirlpool Heater - EZHEAT-100 (whirlpool only)
- ☐ Tile Bead Kit: TILE-BEAD
- ☐ Air Jet Cover Kit for Air Bath  
Model: 9810.025 (color-matched)

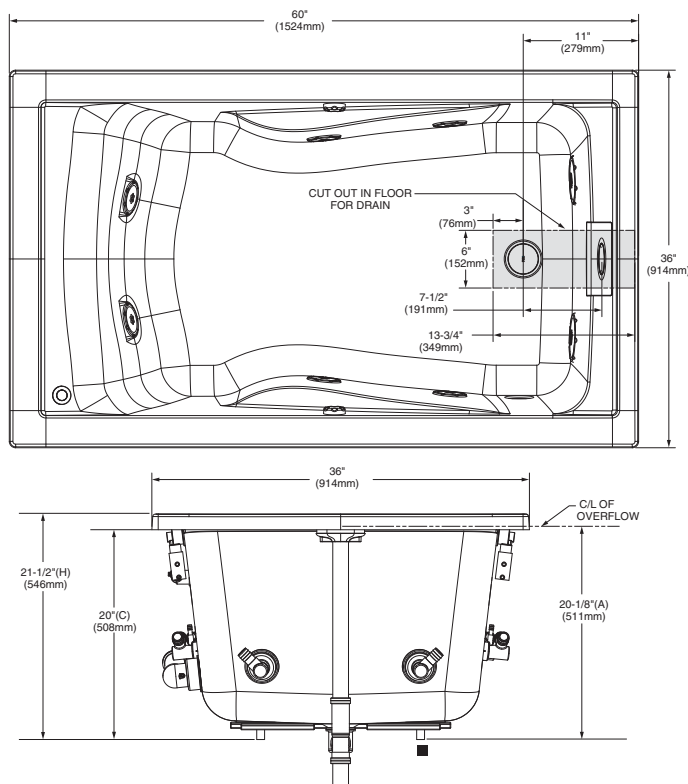
\*\* See American Standard Faucet Selector

For color/finish availability and other faucet choices, please see the Product Selector and Pricing Guide.

**NOTE:** E-Z-Install Whirlpool Heater is designed to maintain water temperature during operation. It will not heat cold water to desired bathing temperature.

SEE REVERSE FOR ROUGHING-IN DIMENSIONS  
AND PRODUCT SPECIFICATIONS

**Whirlpool Shown**



DIMENSIONS OF FIXTURES ARE NOMINAL AND MAY VARY WITHIN THE RANGE OF TOLERANCES ESTABLISHED BY ANSI STANDARDS Z124.1 AND A112.19.7.

**GENERAL SPECIFICATIONS FOR 2771LC WHIRLPOOL**

INSTALLED SIZE \_\_\_\_\_ 60 x 36 x 21-1/2 In.  
(1524mm x 914 mm x 546mm)  
WEIGHT \_\_\_\_\_ 75 Lbs. (34 Kg.)  
WEIGHT w/WATER \_\_\_\_\_ 800 Lbs. (363 Kg.)  
GAL. TO OVERFLOW \_\_\_\_\_ 87 Gal. (329 L.)  
MIN. OPERATING GAL. \_\_\_\_\_ 50 Gal. (189 L.)  
BATHING WELL AT SUMP \_\_\_\_\_ 41-1/4 x 26-1/4 In.  
(1048mm x 667mm)  
BATHING WELL AT RIM \_\_\_\_\_ 52-1/2 x 30 In. (1334mm x 762mm)  
WATER DEPTH TO OVERFLOW \_\_\_\_\_ 18-1/2 In. (470mm)  
FLOOR LOADING \_\_\_\_\_ 53 Lbs./Sq. Ft. (260 Kgs/Sq. m.)  
(PROJECTED AREA)

**WHIRLPOOL ELECTRICAL SPECIFICATIONS**

PUMP \_\_\_\_\_ 1.4 HPR, 9.7 AMPS, 120V.

**GENERAL SPECIFICATIONS FOR 2771L.002 BATHING POOL**

INSTALLED SIZE \_\_\_\_\_ 60 x 36 x 21-1/2 (1524 x 914 x 546mm)  
WEIGHT \_\_\_\_\_ 60 Lbs. (27 Kg.)  
WEIGHT w/WATER \_\_\_\_\_ 785 Lbs. (356 Kg.)  
GAL. TO OVERFLOW \_\_\_\_\_ 87 Gal. (329 L.)  
BATHING WELL AT SUMP \_\_\_\_\_ 41-1/4 x 26-1/4 In. (1048 x 667mm)  
BATHING WELL AT RIM \_\_\_\_\_ 52-1/2 x 30 In. (1334 x 762mm)  
WATER DEPTH TO OVERFLOW \_\_\_\_\_ 18-1/2 (470mm)  
FLOOR LOADING \_\_\_\_\_ 52 Lbs./Sq. Ft. (255 Kgs./Sq. m.)  
(PROJECTED AREA)

**AIR BATH ELECTRICAL SPECIFICATIONS**

BLOWER \_\_\_\_\_ 1.0 APR, 10AMPS, 120V

**NOTES:**

BATH CAN BE INSTALLED EITHER ABOVE OR BELOW FLOOR LINE AS PIER, ISLAND, OR PENINSULA TYPE INSTALLATION. SUPPORT OF BATH BY SUMP BEDDING. SUPPORT AND ENCLOSING MATERIAL BY OTHERS.

■ REFER TO INSTALLATION INSTRUCTIONS SUPPLIED WITH WHIRLPOOL FOR ADDITIONAL INFORMATION.

OPTIONAL 3 WALL TILING BEAD. KIT No. TILE-BEAD AND APRON No. 9261.019 AVAILABLE AND MUST BE ORDERED SEPARATELY.

FITTINGS NOT INCLUDED AND MUST BE ORDERED SEPARATELY.

PROVIDE SUITABLE REINFORCEMENT FOR ALL SUPPORTS.

**IMPORTANT:** Dimensions of fixtures are nominal and may vary within the range of tolerances established by ANSI Standard Z124.1. These measurements are subject to change or cancellation. No responsibility is assumed for use of superseded or voided leaflet