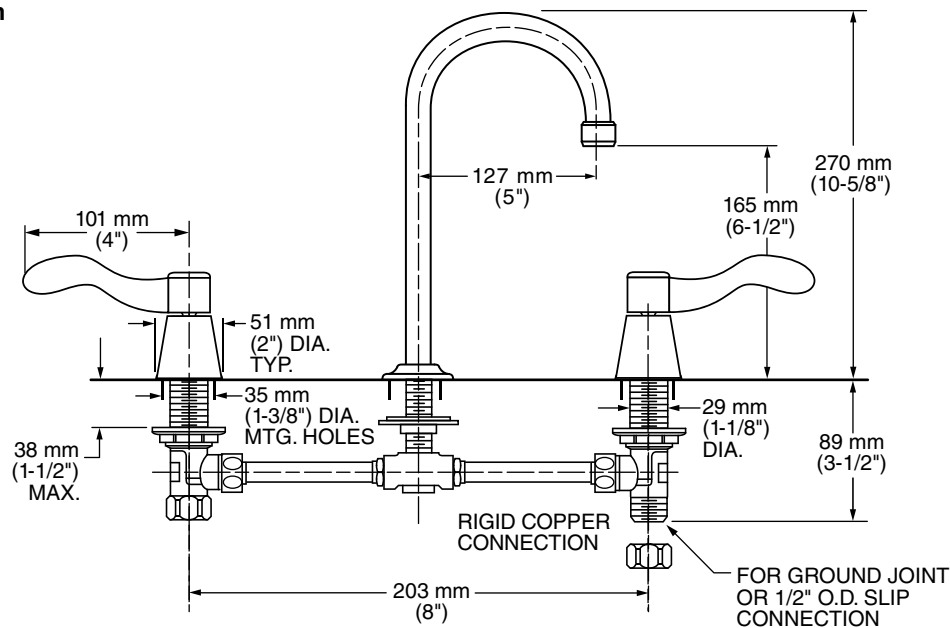




6830.372H Shown

MODEL NUMBER:

- **6830.372H 8" Widespread Lavatory**
Rigid copper connections. Rigid gooseneck spout.
Metal wrist blade handles with red and blue indexes.
1.5 gpm pressure compensating aerator. Less drain.



GENERAL DESCRIPTION:

Cast brass valve bodies with rigid copper 8" (203 mm) connections. 1/4 turn washerless ceramic disc valve cartridges. Rigid gooseneck spout. One-half inch male inlet shanks with brass coupling nuts and shank nuts. Metal wrist blade handles with red and blue indexes. 1.5 gpm/5.7 L/min. maximum flow rate.

PRODUCT FEATURES:

Pressure Compensating Aerator: Provides a constant water flow of 1.5 gpm throughout the pressure range.

Brass Construction: Durable - Excellent in high use applications. Ideal for prolonged contact with water.

Ceramic Disc Valve Cartridges: Assures a lifetime of drip-free performance.

Lead Free: Faucet contains $\leq 0.25\%$ total lead content by weighted average.

SUGGESTED SPECIFICATION:

Two handle widespread lavatory faucet shall feature cast brass valve bodies with 8" rigid copper connections. All brass shank nuts and coupling nuts. Shall feature water-conserving 1.5 gpm/5.7 L/min. pressure compensating aerator. Shall also feature 1/4 turn washerless ceramic disc valve cartridges. Fitting shall be American Standard Model #6830.372H.002.

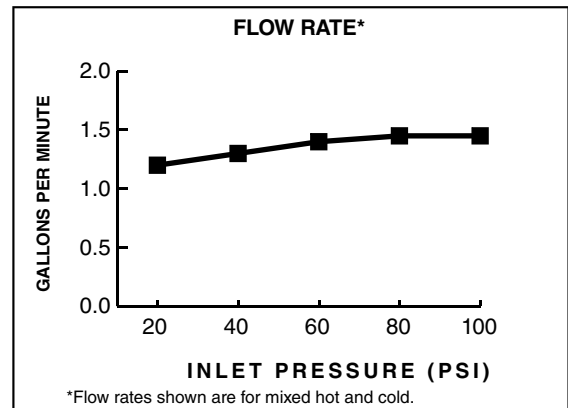


HERITAGE®
TWO-HANDLE 8" WIDESPREAD LAVATORY FAUCET
WITH GOOSENECK SPOUT

CODES AND STANDARDS

These products meet or exceed the following codes and standards:

ASME A112.18.1
CSA B125.1
NSF 61/Section 9
NSF 372



Product Number	Description	Finish
		Polished Chrome
		002
6830.372H	Lavatory Faucet. Rigid copper connections. Rigid gooseneck spout. Metal wrist blade handles with red and blue indexes. 1.5 gpm/5.7 L/min pressure compensating aerator. Less drain. Less handles.	

Handles must be ordered separately.



MEETS THE AMERICANS WITH DISABILITIES ACT GUIDELINES
AND ANSI A117.1 REQUIREMENTS FOR ACCESSIBLE AND
USABLE BUILDING FACILITIES-CHECK LOCAL CODES