

33 170

PLUS

SINGLE HOLE SINGLE-HANDLE S-SIZE BATHROOM FAUCET 1.2 GPM

Pure Freude
an Wasser



STANDARD SPECIFICATION:

- GROHE SilkMove®
- GROHE StarLight®
- GROHE EcoJoy
- GROHE QuickFix® installation
- GROHE AquaGuide adjustable aerator 20°-40°
- 6 ¾" Faucet height
- 4 ¾" Spout reach
- 4 1/8" Aerator height
- Solid brass body
- Metal lever handles
- CALGreen/CEC compliant
- Nylon braided flex hoses
- Includes drain assembly
- 1.2gpm (WaterSense)



PRODUCT FEATURES:



-  GROHE StarLight®
-  GROHE SilkMove®
-  GROHE QuickFix®

CERTIFICATIONS:



- ADA
- WaterSense
- CEC Certified
- Low Lead Certified
- CALGreen Compliant
- Massachusetts Plumbing Board Approved
- Energy Policy Act of 1992
- NSF 61
- CSA B125.1
- ASME A112.18.1
- Complies with lead plumbing laws

AVAILABLE FINISHES:

- 33170003**  GROHE StarLight® Chrome
- 33170EN3**  Brushed Nickel InfinityFinish™

NOTE: Install this product according to the installation guide. ADA, CSA compliant when installed to the specific requirements of these regulations.

We reserve the right to make revisions without notice to product specifications. 10-03-2023

US
Tel: 1.630.582.7711 Fax: 1.630.582.7722
For the most current Specification Sheet,
go to www.grohe.us.

Canada
Tel: 1.888.644.7643 Fax: 1.905.366.2071
For the most current Specification Sheet,
go to www.grohe.ca.

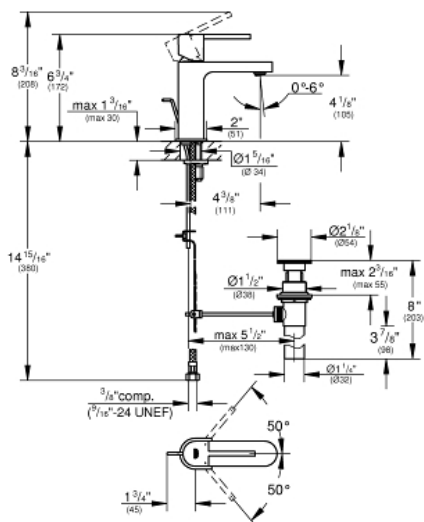
PART OF **LIXIL**

GROHE PLUS Single-Handle Bathroom Faucet S- Size

MODEL # 33170EN3

Pure Freude
an Wasser

GROHE



Product Description:
GROHE PLUS
Single-Handle Bathroom Faucet S-Size

Standard Specification:

- Single hole installation
- Metal lever handle
- **GROHE SilkMove** 1.1" (28 mm) ceramic cartridge
- With temperature limiter
- **GROHE StarLight** finish
- **GROHE EcoJoy**
- **GROHE AquaGuide** adjustable flow control
- **GROHE QuickFix** installation system
- Includes waste-set drain assembly
- Stainless steel flex lines
- Max flow rate: 1.2 gpm (4.56 L/min)

Applicable Codes & Standards:

- Energy Policy Act of 1992
- NSF 61
- ASME A112.18.1/CSA B125.1
- US Federal and State material regulations
- EPA WaterSense®
- CalGreen
- MASS

Color:

- 33170EN3 Brushed Nickel InfinityFinish

33 170

PLUS

SINGLE HOLE SINGLE-HANDLE S-SIZE
BATHROOM FAUCET 1.2 GPM

Pure Freude
an Wasser



TECHNICAL DATA:

Product Height	6-1/4 in
Product Length	5-7/8 in
Product Width	2-1/8 in
Fitting Spout Height	2-15/16 in
Fitting Spout Reach	4-1/8 in
Fitting Handle Height	6-1/4 in
GPM (Min)-GPM (Max)	1.2 gal (US)/min
Fitting No of Holes Required	1

