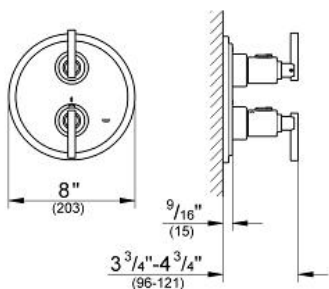


ATRIO  
Thermostatic Shower Valve  
MODEL # 19168000

Pure Freude  
an Wasser

GROHE



**Product Description:**  
ATRIO  
Thermostatic Shower Valve

**Standard Specification:**

- Final installation set for:
- For use with GROTHERM Rough-In Valve 34 126
- Without concealed body
- With Jota handle
- Includes Atrio Lever Handle
- Must use with GROTHERM Integrated Rough-In Valve 34 126
- Max Flow Rate 12.6 gpm (47.7 l/min) at 45 psi (3.1 bar)

**Applicable Codes & Standards:**

- Energy Policy Act of 1992
- ASME A112.18.1/CSA B125.1

**Color:**

- 19168000 StarLight Chrome