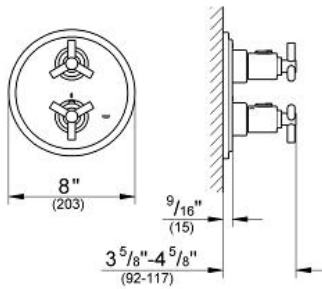


ATRIO
Thermostatic Shower Valve
MODEL # 19167000

Pure Freude
an Wasser



Product Description:

ATRIO

Thermostatic Shower Valve

Standard Specification:

- Final installation set for:
- For use with GROTHERM Rough-In Valve 34 126
- Without concealed body
- With Ypsilon handle
- Includes trio spoke handle
- Must use with GROTHERM Integrated Rough-In Valve 34 126
- Max Flow Rate 12.6 gpm (47.7 l/min) at 45 psi (3.1 bar)

Applicable Codes & Standards:

- Energy Policy Act of 1992
- ASME A112.18.1/CSA B125.1

Color:

- 19167000 StarLight Chrome