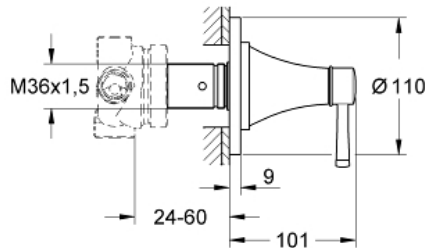


GRANDERA
3-Way Diverter Trim
MODEL # 19942000

Pure Freude
an Wasser

GROHE



Product Description:
GRANDERA
3-Way Diverter Trim

Standard Specification:

- For use with Diverter Rough-In Valve (29 714 000)
- GROHE StarLight chrome finish
- Min. recommended pressure: 15 psi (1.0 bar)

Applicable Codes & Standards:

- Energy Policy Act of 1992
- ASME A112.18.1/CSA B125.1
- ICC/ANSI A117.1

Color:

- 19942000 StarLight Chrome