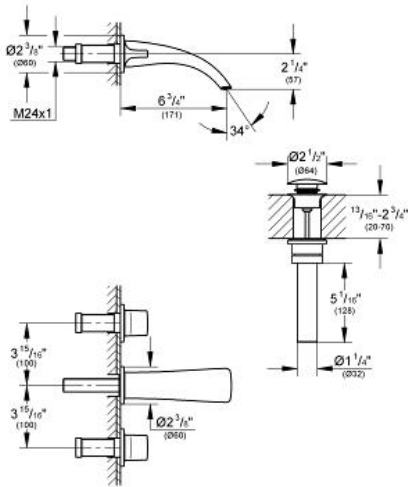


# GROHE ONDUS 8" Widespread Two-Handle Bathroom Faucet

MODEL # 31049000

Pure Freude  
an Wasser



**Product Description:**  
**GROHE ONDUS**  
**8" Widespread Two-Handle Bathroom Faucet**

**Standard Specification:**

- Wall mount
- Requires Vessel Rough-In Valve (29 031)
- Final installation set for:
  - 1/2" (13mm) ceramic cartridge (90° turn)
  - Flow control
  - Push-open 1 1/4" (32mm) waste set
- Projection 7"
- Center distance 7 7/8" (200mm)
- Flow restrictor (1.5 gpm)
- Click escutcheon
- Only for use with concealed body
- Max Flow Rate 1.6 gpm (6 L/min)

**Applicable Codes & Standards:**

- Energy Policy Act of 1992
- NSF 61
- ASME A112.18.1/CSA B125.1
- US Federal and State material regulations
- LOGO NSF

**Color:**

- 31049000 StarLight Chrome

