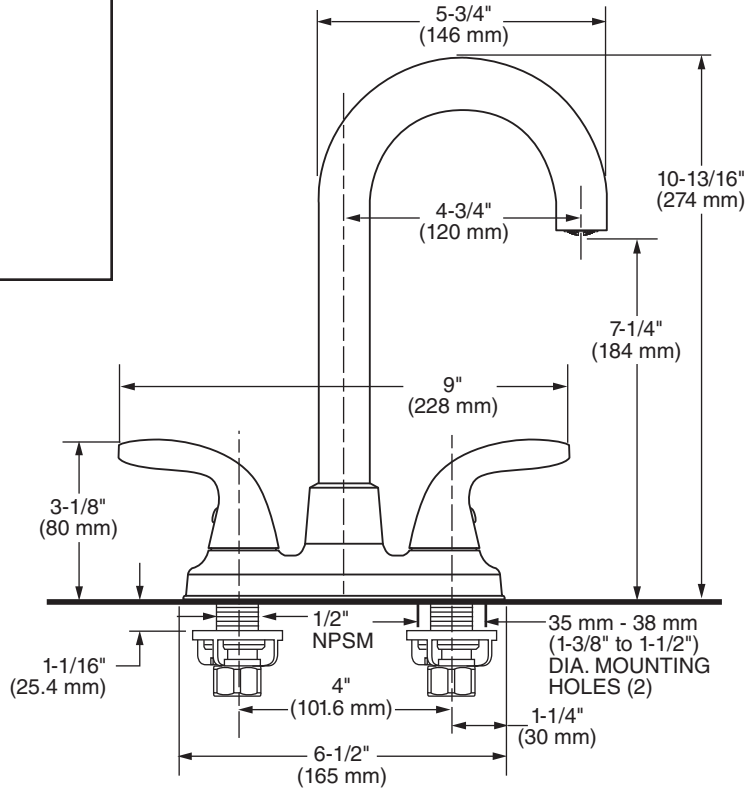


**MODEL NUMBER:**

❑ **9091400.002 Cadet Bar Faucet Chrome**



**Beautiful & Tough**

**TARNISH, SCRATCH AND  
CORROSION RESISTANT FINISH**



Reliable For Life



**Guaranteed Not To Leak**

**CERAMIC DISC VALVE**



Reliable For Life



**Durable Solid Feel**

**METAL CONSTRUCTION**



Reliable For Life

**GENERAL DESCRIPTION:**

Bar faucet on 4" centers. 1/4 turn washerless ceramic disc valve cartridges. Durable non-metal water ways with one-half inch male inlet shanks. Metal body and metal lever handles.

1.5 gpm/5.7L/min. maximum flow rate.

**PRODUCT FEATURES:**

Effortless elegance, leading-edge style and thoughtful innovation combine to make American Standard faucets the perfect choice for those who are unwilling to sacrifice style for performance.

**Durable:** Easy to clean.

**Ceramic Disc Valve Cartridge:** Assures a lifetime of smooth handle operation and drip-free performance.

**Lead Free:** Faucet contains  $\leq 0.25\%$  total lead content by weighted average.

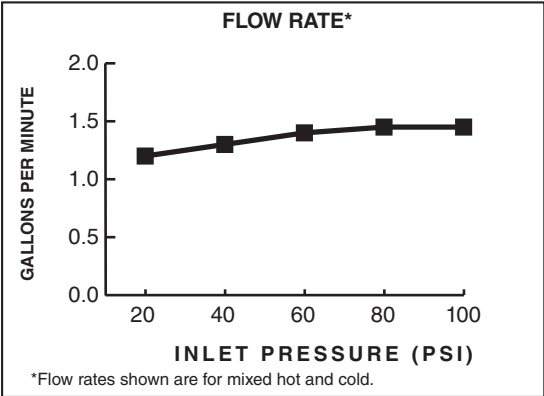
**SUGGESTED SPECIFICATION**

Centerset bar sink faucet shall feature brass spout and 1/4 turn washerless ceramic disc valve cartridges. Fitting shall be American Standard Model # 9091400.002.

CODES AND STANDARDS

These products meet or exceed the following codes and standards:

- ANSI A117.1
- ASME A112.18.1
- CSA B125.1
- NSF/ANSI/CAN 61: Q<1
- NSF/ANSI/CAN 372



1.5 gpm/5.7 L/min. FLOW RATE



| Product Number | Description                     | Finish Options  |
|----------------|---------------------------------|-----------------|
|                |                                 | Polished Chrome |
|                |                                 | 002             |
| 9091400        | Bar Sink faucet. Lever handles. |                 |

Meets the American Disabilities Act Guidelines and ANSI A117.1 Requirements for the physically challenged.