



MODEL NUMBER:

❑ 1036962950 Brushed Nickel

PRODUCT FEATURES

Advanced Spray Engine: Adjusts from massage to full/massage combination to full spray to HydroFocus concentrating spray to HydroFocus/full combination to pause.

One-Piece Cartridge: Combination of Ceramic Disc Mixing Valve and a Ceramic Balancing Spool in a one-piece cartridge simplifies installation and maintenance.

Ceramic Disc Mixing Valve: Assures a lifetime of drip-free performance and smooth handle operation.

Ceramic Balancing Spool: Maintains a constant output temperature in response to changes in relative hot and cold supply pressure. Ceramic material is unaffected by mineral deposits and harsh water conditions.

Integrated Check Valves: Engineered to eliminate cross flow.

Adjustable Hot Limit Safety Stop: Limits the amount of hot water allowed to mix with cold. Reduces the risk of accidental scalding.

Comfort Zone: Offers a wider shower range to fine tune the desired temperature within the useful temperature zone.

Back-to-Back Capability: Hot and cold can be reversed quickly and easily.

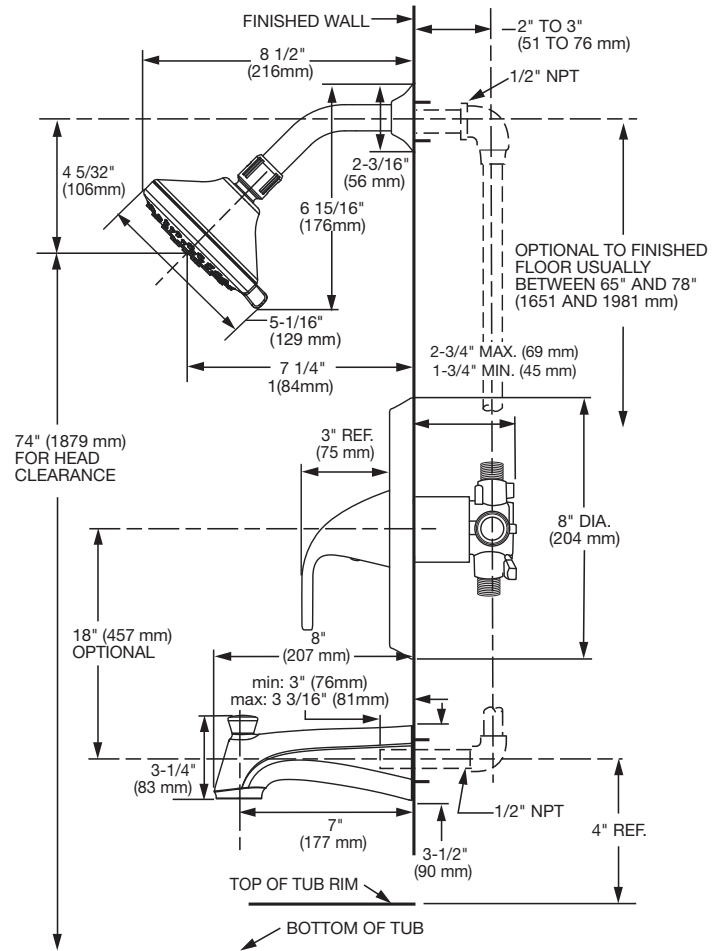
Trim: Features 4-1/2" showerhead with a maximum 2.5 gpm/9.5 L/min. flow rate. Plastic I.P.S. diverter spout. Metal wall valve trim with metal lever.

FLASH PRESSURE BALANCE VALVE PRODUCT FEATURES:

Thermal shock protection: Fast-acting pressure balance technology provides anti-scald protection.

Useful shower temperature: Gives users more range to fine-tune their ideal temperature preferences.

Longevity: Outstanding performance in durability and handling due to Double Ceramic Technology.



GENERAL DESCRIPTION:

Cast DZR Brass Valve Body: Durable. Ideal material for prolonged contact with water.

Flat Back: Allows valve to be mounted flush against cross brace for easy and solid installation.

Exclusive Plaster Guard: Plaster guard is designed to protect valve and act as a guide during installation. It can serve as mounting support for thin-wall installations.

Pressure balancing cartridge: maintains constant output temperature in response to changes in relative hot and cold supply pressures. 1/2" female I.P.S. inlets/outlets. Easy clean showerhead has 2.5gpm/9.5L/min flow restrictor. Metal lever handle. I.P.S. diverter tub spout.

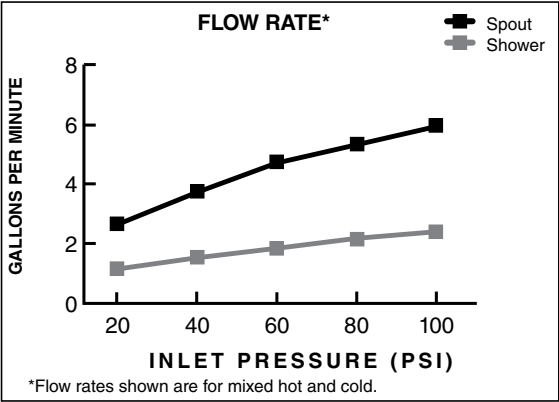
SUGGESTED SPECIFICATION:

Bath/shower fitting shall feature 6-function showerhead with Max. 2.5 gpm/9.5 L/min Max flow rate. Shall include Flash Pressure Balance Valve. Fitting shall be American Standard Model # 1036962950.

CODES AND STANDARDS

These products meet or exceed the following codes and standards:

- ASME A112.18.1
- CSA B125.1
- ASSE 1016/ASME A112.1016/CSA B125.16



CEC

Product Number	Description
1036962950	1-Handle Tub/Shower. Metal lever handle. Ceramic Disc Valve. 6-Function showerhead. Includes Flash Pressure Balance Valve. Brushed Nickel finish.