

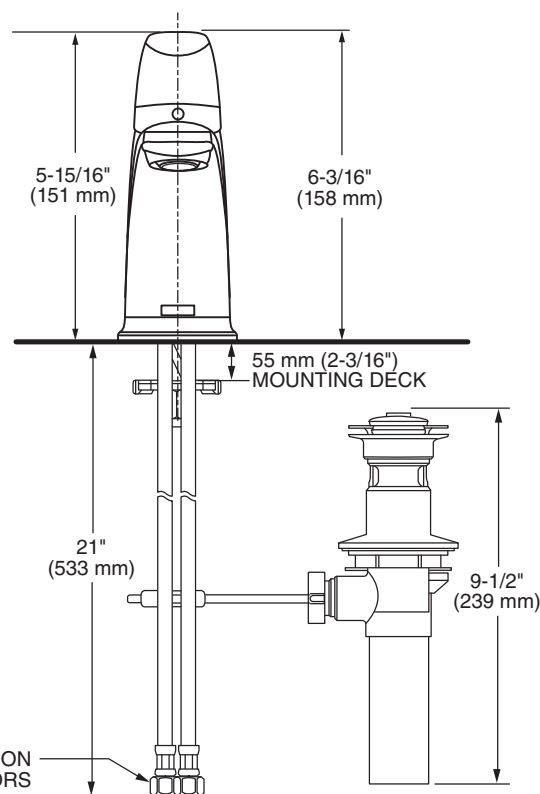
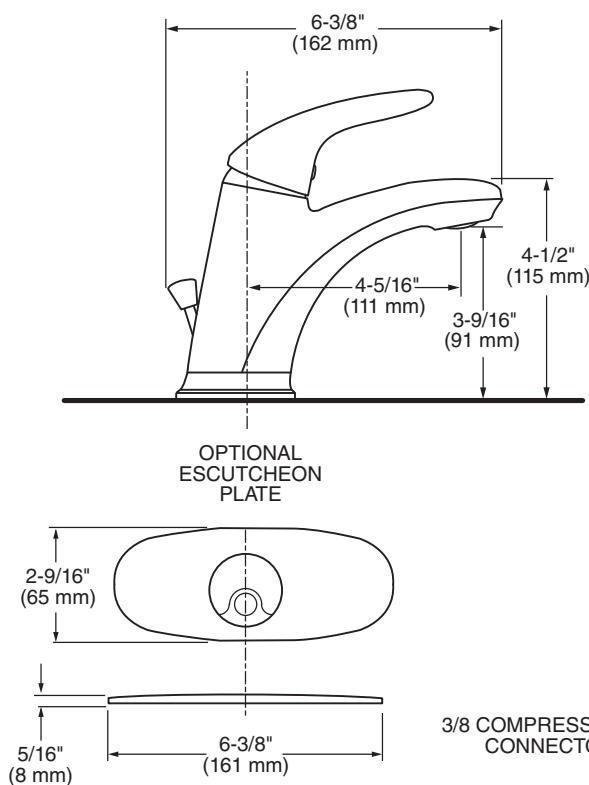
7075100 Shown

**MODEL NUMBER:**

- ☐ **7075100 Single Control Lavatory**  
Metal lever handle. Metal pop-up drain.
- ☐ **7075102 Single Control Lavatory**  
Metal lever handle. 50/50 Pop-up drain.
- ☐ **7075104 Single Control Lavatory**  
Metal lever handle. LESS drain.  
LESS pop-up rod & hole.

**AVAILABLE ACCESSORY:**

- ☐ **2000102P Escutcheon Plate Only**



**GENERAL DESCRIPTION:**

Metal body. Washerless 35 mm ceramic disc valve cartridge with integral hot limit safety stop. 24" color-coded braided flexible supply hoses with 3/8" compression connectors. 1.2 gpm/4.5 L/min. maximum flow rate. Fitting can be mounted on 4" centers using optional escutcheon (2000102P) or single hole mounting method.

**PRODUCT FEATURES:**

**Ceramic Disc Valve Cartridge:** Assures a lifetime of smooth handle operation and drip-free performance.

**Adjustable Hot Limit Safety Stop:** Limits the amount of hot water allowed to mix with cold. Reduces the risk of accidental scalding.

**Lead Free:** Faucet contains  $\leq 0.25\%$  total lead content by weighted average.

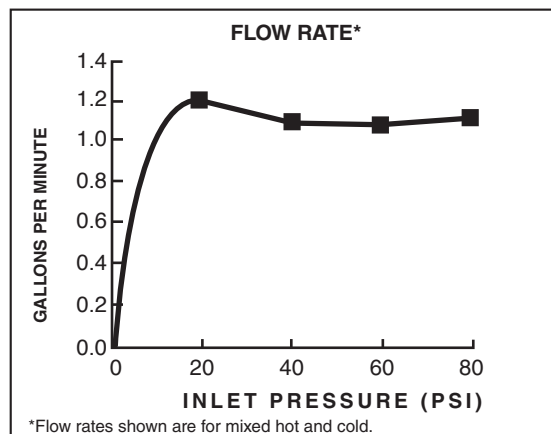
**SUGGESTED SPECIFICATION**

Single control lavatory faucet shall feature a metal body and metal lever handle. Shall also feature washerless ceramic disc valve cartridge with integrated hot limit safety stop. Fitting shall be American Standard Model # 707510X.\_\_\_\_\_.

## CODES AND STANDARDS

These products meet or exceed the following codes and standards:

**ANSI A117.1**  
**ASME A112.18.1**  
**CSA B125.1**  
**NSF/ANSI/CAN 61: Q<sub>≤</sub>1**  
**NSF/ANSI/CAN 372**



## CEC

| Product Number | Description  |     | Finish Options  |               |                |             |
|----------------|--|-----|-----------------|---------------|----------------|-------------|
|                |  |     | Polished Chrome | Legacy Bronze | Brushed Nickel | Matte Black |
|                |  |     | 002             | 278           | 295            | 243         |
| 7075100        | Colony PRO Single Control Lavatory Faucet. Metal lever handle. Metal pop-up drain.                 | ADA | ✓               | ✓             | ✓              | ✓           |
| 7075102        | Colony PRO Single Control Lavatory Faucet. Metal lever handle. 50/50 Pop-up drain.                 | ADA | ✓               | ✓             | ✓              |             |
| 7075104        | Colony PRO Single Control Lavatory Faucet. Metal lever handle. LESS drain. LESS pop-up hole & rod. | ADA | ✓               | ✓             | ✓              | ✓           |
| 7075102P       | Optional Escutcheon Plate Only (For mounting on 4" centers).                                       |     | ✓               | ✓             | ✓              | ✓           |

**ADA** Meets the American Disabilities Act Guidelines and **ANSI A117.1** Requirements for the physically challenged.