

**ASPIRATIONS ECOSTRENGTH SKIRTED TWO-PIECE  
CHAIR HEIGHT TOILET WITH SEAT**

**251AA809**

- EcoStrength's vacuum assisted technology obtains great flush performance using minimal water
- Combination bowl and tank, with seat
- 12" (305 mm) rough-in
- Chair Height elongated bowl with smooth-sided, concealed trapway
- Ultra-high efficiency toilet (UHET) 0.80 gpf/ 3 Lpf
- Meets EPA WaterSense® and MaP Premium criteria
- EverClean® Antimicrobial Surface
- Includes EZ-Install Tools
- 16-1/2" (419 mm) rim height for accessible applications
- 2-1/8" (55 mm) trapway
- Chrome trip lever included  
(Other finishes available)
- Two colour-matched bolt caps
- Lifetime warranty on chinaware, 10 year warranty on all mechanical parts, and 1 year warranty on seat
- Design coordinates with Aspirations suite

- ❑ **251AA808** Same as above except trip lever on right hand side
- ❑ **3408A100** Chair Height Elongated Bowl with seat
- ❑ **4408A809** UHET Tank
- ❑ **5036A65G** Elongated Luxury Seat included with Bowl

**Nominal Dimensions:**

30-5/16" x 14-11/16" x 30-11/16"  
(770 x 373 x 779 mm)

Fixture with seat; supply sold separately

**Alternative Tank Configuration Available:**

- ❑ **4408A808** Tank complete with trip lever located on right side

**Compliance Certifications** - in progress

Meets or Exceeds the Following Specifications:

- ASME A112.19.2/CSA B45.1 for Vitreous China Fixtures
- US EPA WaterSense® Specification for UHETs

**To Be Specified:**

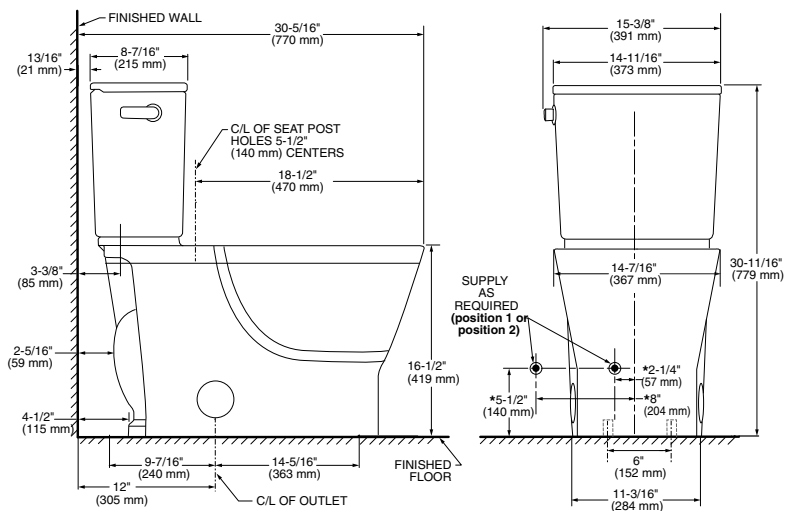
- ❑ Color: ☐ White
- ❑ Supply with stop:



Meets B651-12 Barrier Free code. Check local codes.



Meets the American Disabilities Act Guidelines and ANSI A117.1 Requirements for the physically challenged.



**NOTES:**

THIS COMBINATION IS DESIGNED TO ROUGH-IN AT A MINIMUM DIMENSION OF 305MM (12") FROM FINISHED WALL TO C/L OF OUTLET.

\* DIMENSIONS SHOWN FOR LOCATION OF SUPPLY ARE SUGGESTED.

SUPPLY NOT INCLUDED WITH FIXTURE AND MUST BE ORDERED SEPARATELY.

**IMPORTANT:** Dimensions of fixtures are nominal and may vary within the range of tolerances established by ANSI Standard A112.19.2.

These measurements are subject to change or cancellation. No responsibility is assumed for use of superseded or voided pages.

