

FLUSH VALVE ASSEMBLY

This kit contains parts for either 1.28 GPF or 1.6 GPF applications. The standard configuration is pre-set for 1.2 GPF, if you prefer 1.6 GPF follow the steps below to convert the flush valve.

1. Lift and support the float assembly by holding the guide rod with one hand. **(Figure 1)**
2. Remove the flapper assembly by turning counter-clockwise until free. **(Figure 1)**
3. Replace with the 1.6 GPF flapper assembly, re-attach to the guide rod by turning clockwise until two “clicks” are heard or felt. (or until firmly seated)

OLD FLUSH VALVE REMOVAL

1. Turn off the water supply by turning the handle clockwise. **(Figure 3)**
2. Remove the tank lid and flush the toilet, hold the trip lever down to remove most of the water.
3. Use a sponge (or other) to remove the remaining water from the tank and disconnect the water supply line from the bottom of the tank by turning the nut counter-clockwise. **(Figure 3)**
4. Remove the two tank mounting nuts from the bottom of the tank by turning counter-clockwise. **(Figure 4)**
5. Carefully lift the tank from the toilet bowl and set on a flat work surface.
6. Detach the flush valve chain hook from the lever arm and the refill hose from the overflow tube. **(Figure 2)**
7. Remove the couple gasket from the bottom of the flush valve.
8. Remove the flush valve locknut with the tool provided and then remove the flush valve from the tank and discard.

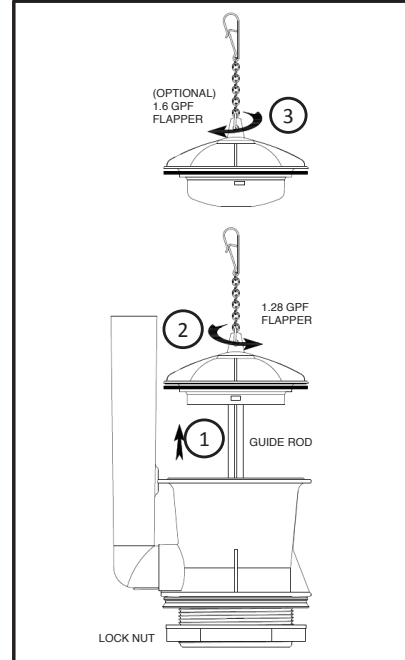


Figure 1

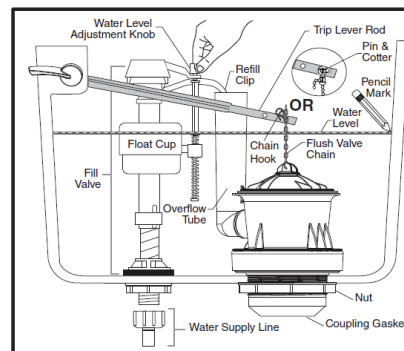


Figure 2

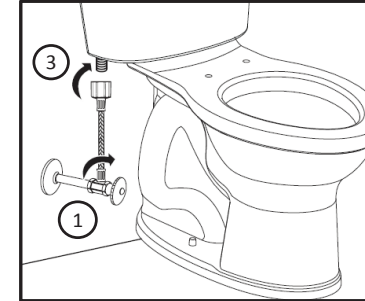


Figure 3

NEW FLUSH VALVE REPLACEMENT

1. Install the new flush valve into the toilet tank, in the same position as the original, and tighten the lock nut until firmly seated with the tool provided. (Be careful to not over tighten)
2. Place a new couple gasket, must be order separately, over the flush valve nut.
3. Place the toilet tank onto the bowl and re-attach the two mounting nuts, tighten alternately, turning clockwise, until the tank contacts the bowl. **(Figure 5)**
4. Re-attach the chain hook to the lever arm and the refill hose to the overflow tube. **(Figure 2)**
5. Re-connect the water supply line to the bottom of the tank by turning clockwise until hand tight. **(Figure 6)**
6. Turn on the water supply by turning the handle counter-clockwise and let the tank refill. **(Figure 6)**
7. Re-place the tank lid, enjoy.

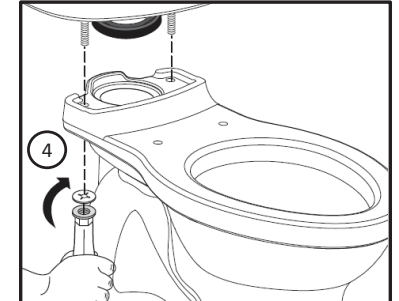


Figure 4

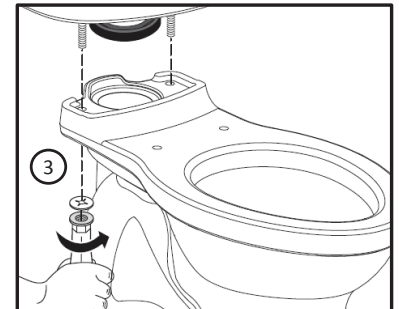


Figure 5

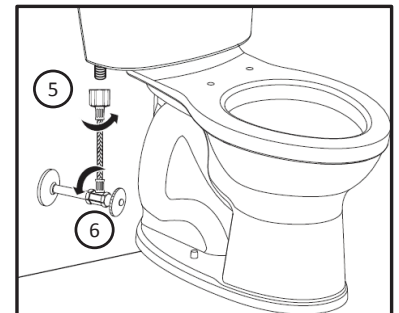


Figure 6